

Figure S1

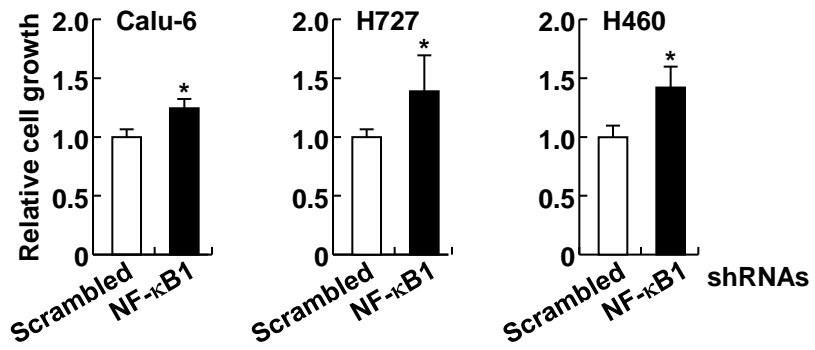


Figure S2

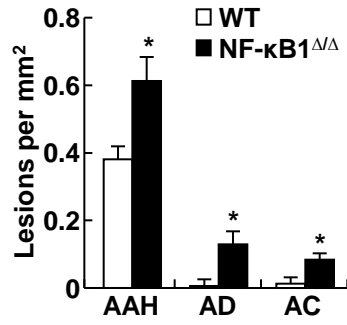


Figure S3

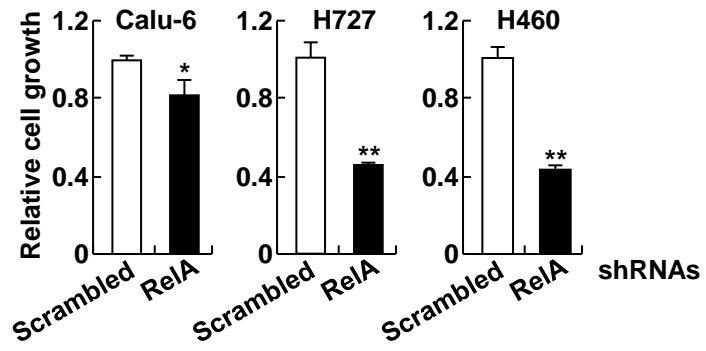


Figure S4

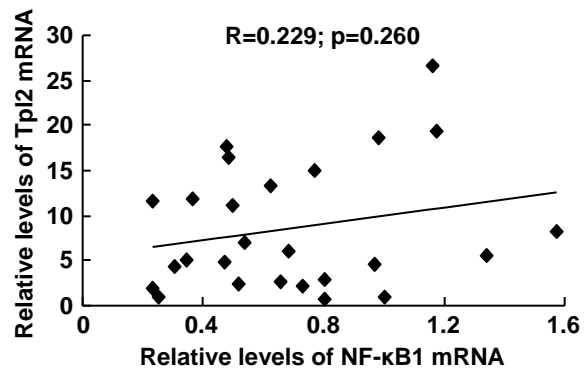


Figure S5

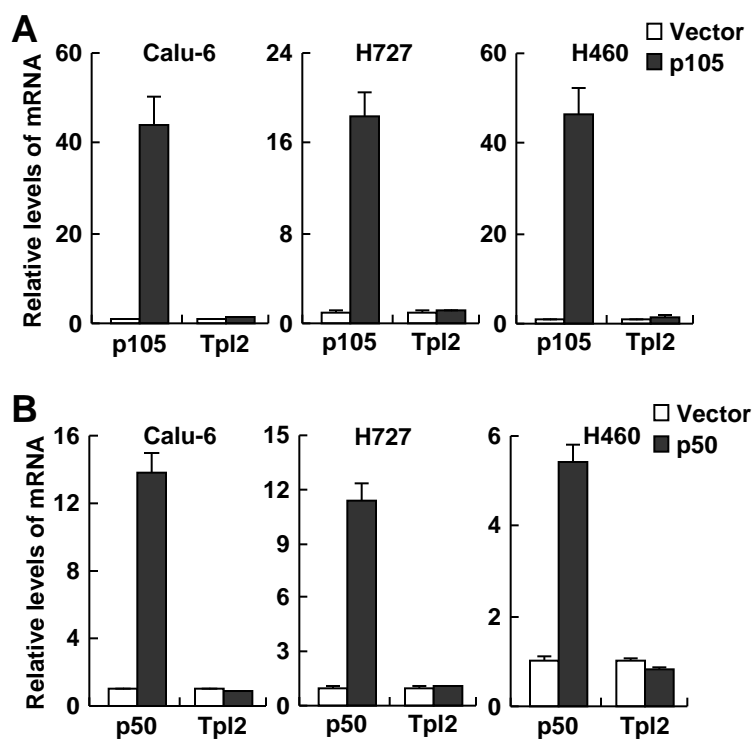


Figure S6

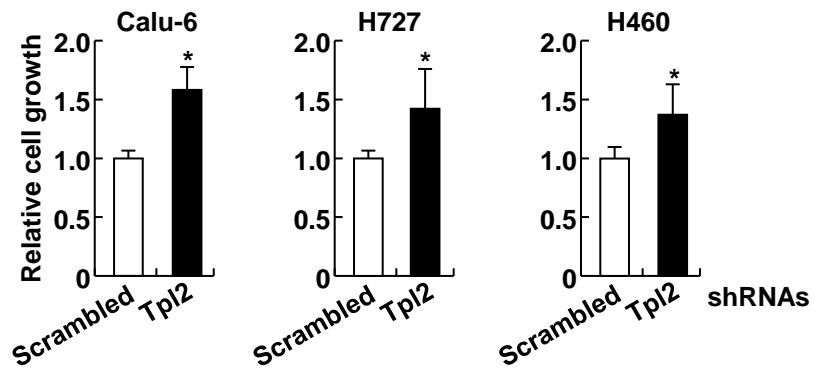


Figure S7

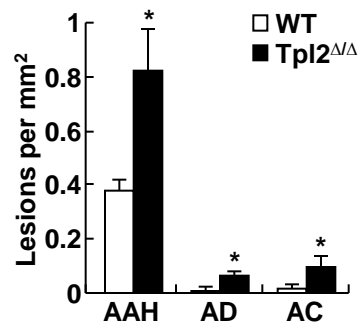


Figure S8

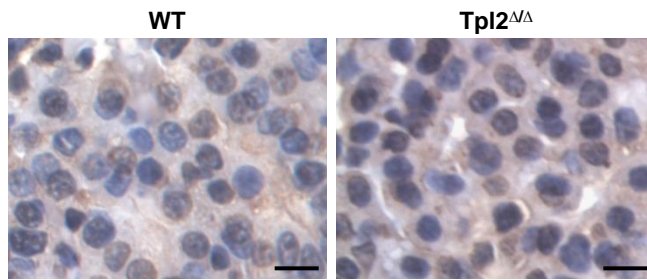


Figure S9

Table S1. Clinicopathological characteristics of patients

	Patients (n)
Risk	
High	15
Low	49
Progression	
No	30
Yes	32
Sex	
Female	30
Male	34
Smoking	
Non-active	36
Active	25
Stage	
I A	11
I B	19
II A/B	12
III	15
IV	5
Histology ^a	
1	27
2	30
3	6
4	1

^a: 1, Adenosquamous carcinoma, Adenocarcinoma, BAC, Malignant carcinoid; 2, Squamous cell carcinoma; 3, Undifferentiated NSCLC, Large cell carcinoma, NSCLC; 4, Small cell carcinoma.

Table S2. Primer pairs used for real-time PCR in the study

Gene	Accession number	Primer pairs	
		Forward (5' to 3')	Reverse (5' to 3')
Mouse TNF α	NM_013693.3	GATGAGAAGTTCCCAAATGGC	ACTTGGTGGTTTGCTACGACG
Mouse IL-6	NM_031168.1	AAAGAAATGATGGATGCTACCAAACCT	GGTACTCCAGAAGACCAGAGGAAATT
Mouse IL-1 β	NM_008361.3	CCTCGTGCTGTCTGGACCCAT	GGACAGGTATAGATTCTTTCCTTTGAGGC
Mouse CCL2	NM_011333.3	GCTGTTACACAGTTGCCGGCTG	GGGCGTAACTGCATCTGGCT
Mouse CCL3	NM_011337.2	GCTCCCAGCCAGGTGTCATTTTC	GGGTTCTCGCTGCCTCCAA
Mouse CCL4	NM_013652.2	CAGCACCAATGGGCTCTGACC	ACCACAGCTGGCTTGGAGCAAA
Mouse CXCL2	NM_009140.2	ACCAACCACCAGGCTACAG	GCGTCACACTCAAGCTCT
Mouse Tpl2	NM_007746.2	GAGTCTGGACTCTGCCCTCTTTGAAC	GACTCTTCGGTGCTGCCTGTGC
Human NF- κ B1	NM_003998	GCAGATGGCCATACCTTCA	TAGAGGCACCAGGTAGTCCA
Human Tpl2	NM_001244134	AAGGACCTCCGAGGAACAGA	CTGCTTTGGTTGAATGGCCC
18sRNA	NR_003278.3	AGGAATTGACGGAAGGGCAC	GGACATCTAAGGGCATCACA