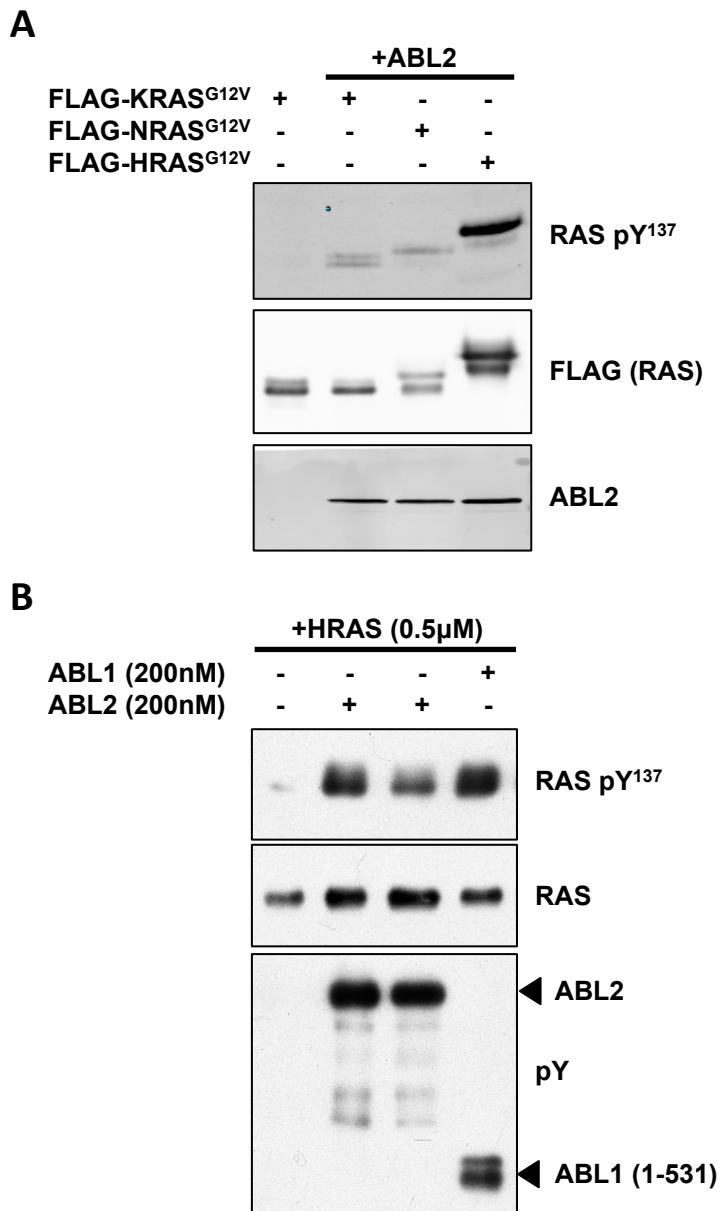


Ting et al.
Supplemental Figure 1



Supplemental Figure 1. All three RAS isoforms can be phosphorylated by ABL, and both ABL isoforms can phosphorylate HRAS. (A) 293T cells were transfected with ABL2 and FLAG-tagged KRAS^{G12V}, NRAS^{G12V} or HRAS^{G12V}. (B) In vitro kinase assay with 0.5 μM HRAS and 200 nM ABL1(1-531) or ABL2.