

## **Title**

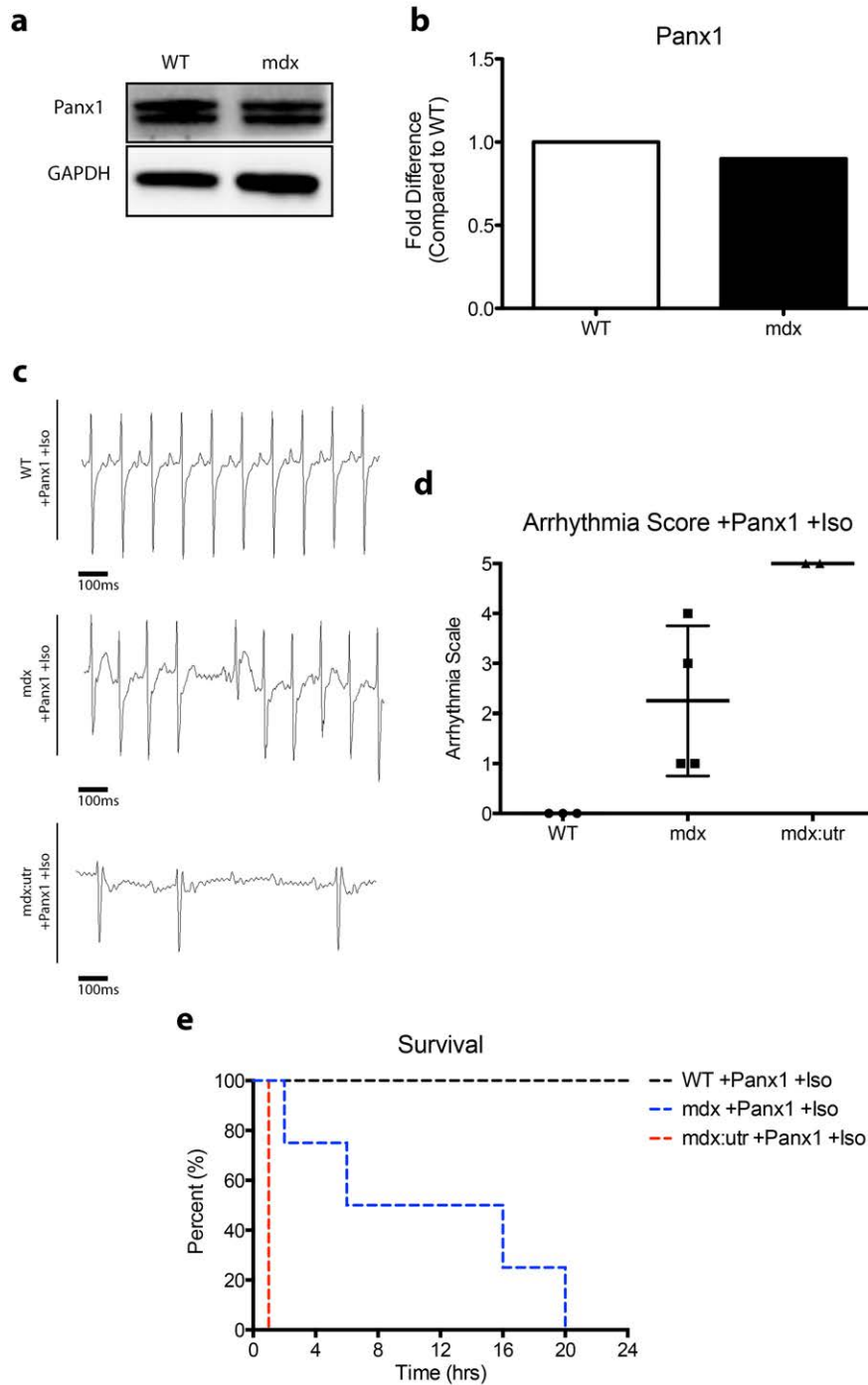
Selective Connexin43 Inhibition Prevents Isoproterenol-Induced Arrhythmias and Lethality  
in Muscular Dystrophy Mice

## **Authors**

J. Patrick Gonzalez<sup>1</sup>, Jayalakshmi Ramachandran<sup>2</sup>, Jorge Contreras<sup>2</sup>, Diego Fraidenraich<sup>1\*</sup>

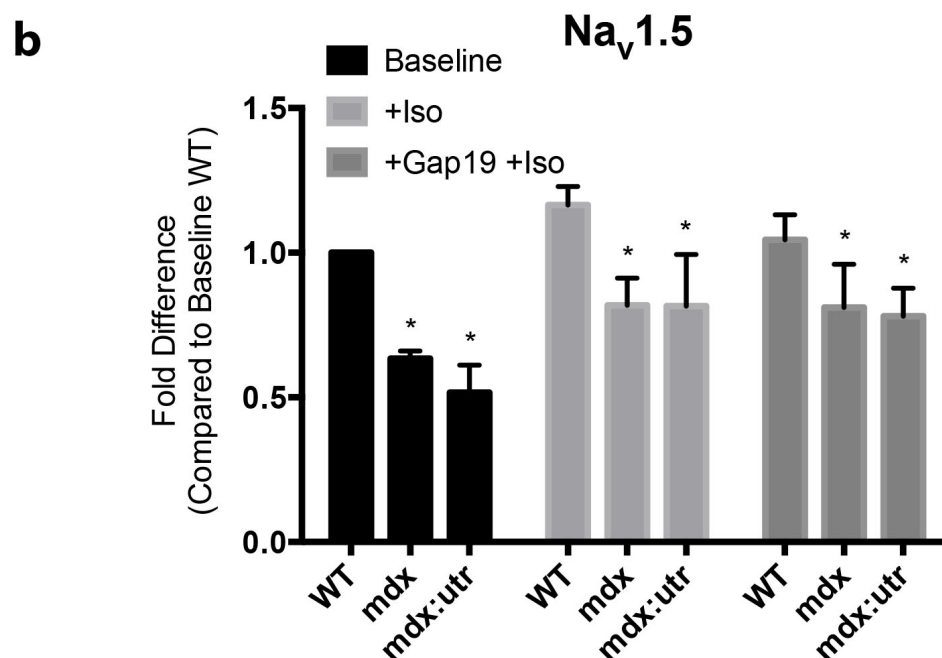
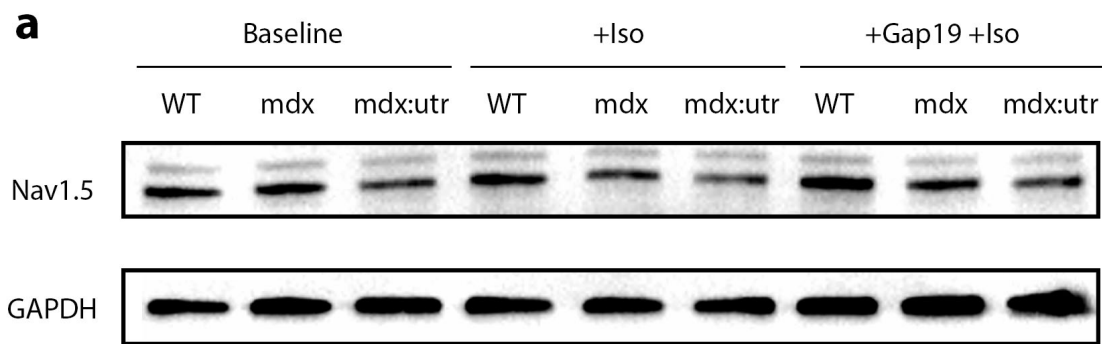
<sup>1</sup>Department of Cell Biology and Molecular Medicine, <sup>2</sup>Department of Pharmacology and  
Physiology, Rutgers Biomedical and Health Sciences, New Jersey Medical School, Newark,  
NJ

\*To whom correspondence should be addressed: fraidedi@rutgers.edu

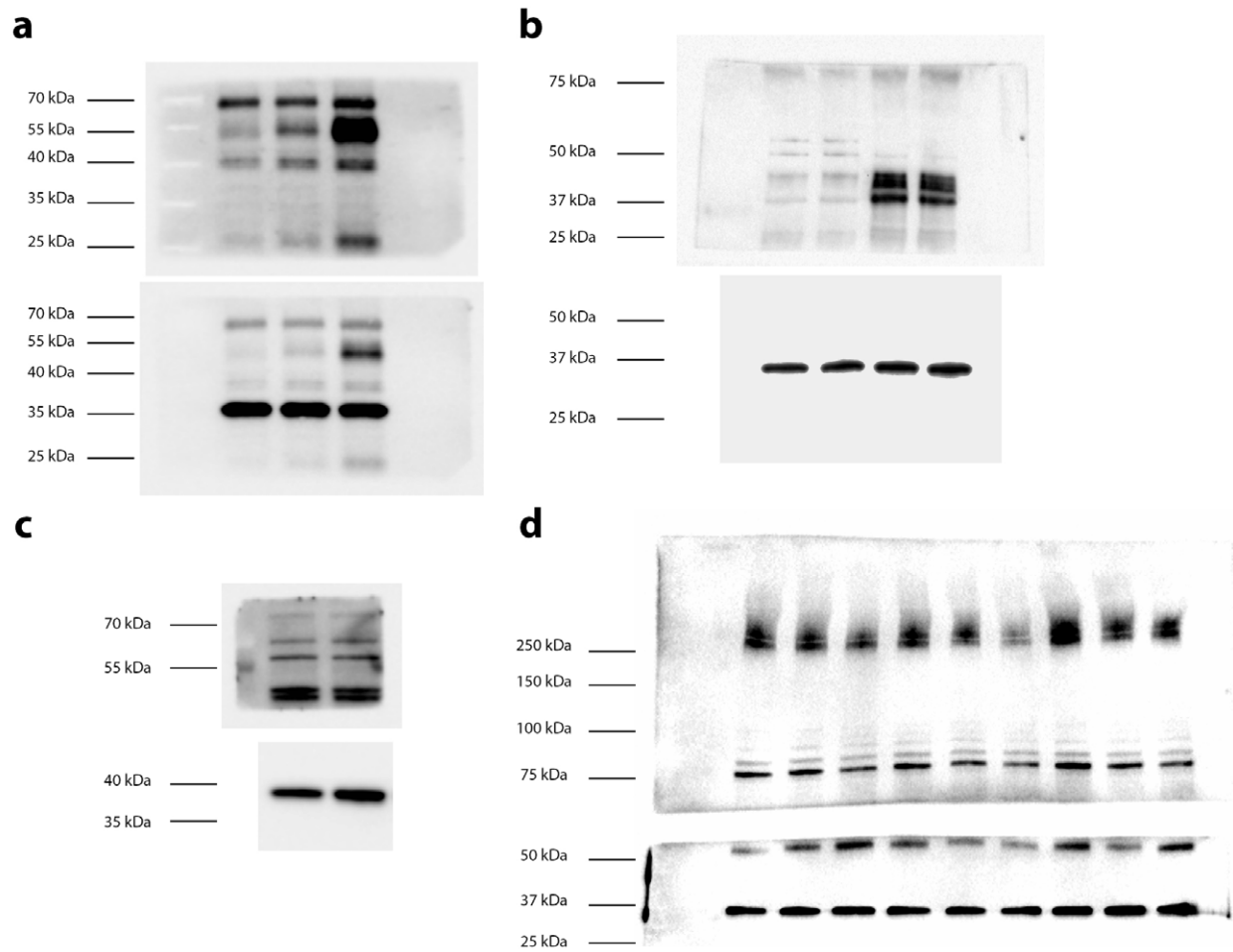


**Supplementary Figure 1. Pannexin-1 levels and function are not implicated in DMD pathology.** (a) Representative cropped western blot images from 4-month-old WT and mdx mouse heart protein homogenates probed for Pannexin-1 with GAPDH as a loading control. Images of full-length blots are available as Supplemental Figure 3. (b)

Quantification of **(a)**, represented as fold difference compared to WT. **(c)** Representative ECG traces from Iso challenged WT, mdx, and mdx:utr mice treated with Panx1 peptide mimetic. Baseline and +Iso traces are depicted in Fig. 3a, b. **(d)** Arrhythmia scores for Panx1 treated, Iso challenged mice, using scoring system as described in Fig. 3. **(e)** Kaplan-Meier survival curve for Panx1 treated, Iso challenged WT (n=3), mdx (n=4), and mdx:utr (n=2) mice.



**Supplementary Figure 2. Na<sub>v</sub>1.5 protein levels are decreased in DMD but unchanged following Cx43 peptide mimetic treatment.** (a) Representative cropped western blot images from 4-month old Baseline, Iso challenged, and Gap19 treated Iso challenged WT, mdx, and mdx:utr mice analyzing Na<sub>v</sub>1.5 protein levels compared to GAPDH loading control. Images of full-length blots are available as Supplemental Figure 3. (b) Quantification of (a), represented as fold difference compared to Baseline WT. \*=P<0.05 compared to Baseline WT.



**Supplementary Figure 3. Full-length western blots.** Un-cropped images of **(a)** mouse Cx43 (top) and GAPDH (bottom) in Fig. 1e, **(b)** human Cx43 (top) and GAPDH (bottom) in Fig. 2c, **(c)** mouse Panx1 (top) and GAPDH (bottom) in Supplementary Fig. 1a, and **(d)** mouse Nav<sub>v</sub>1.5 (top) and GAPDH (bottom) in Supplementary Fig. 2a.