

## Supplementary materials

### Retinal synaptic regeneration *via* microfluidic guiding channels

Ping-Jung Su<sup>1,2\*</sup>, Zongbin Liu<sup>1,2\*</sup>, Kai Zhang<sup>1,2</sup>, Xin Han<sup>1,2</sup>, Yuki Saito<sup>1</sup>, Xiaochun Xia<sup>1</sup>, Kenji Yokoi<sup>1</sup>, Haifa Shen<sup>1</sup>, Lidong Qin<sup>1,2,3</sup>

<sup>1</sup>Department of Nanomedicine, Houston Methodist Research Institute, Houston, TX 77030, USA

<sup>2</sup>Department of Cell and Developmental Biology, Weill Medical College of Cornell University, New York, NY 10065, USA

<sup>3</sup>Department of Molecular and Cellular Oncology, The University of Texas M. D. Anderson Cancer Center, Houston, TX 77030, USA

Correspondence and requests for materials should be addressed to L.Q. (LQin@houstonmethodist.org).

\* These authors contributed equally to this work.

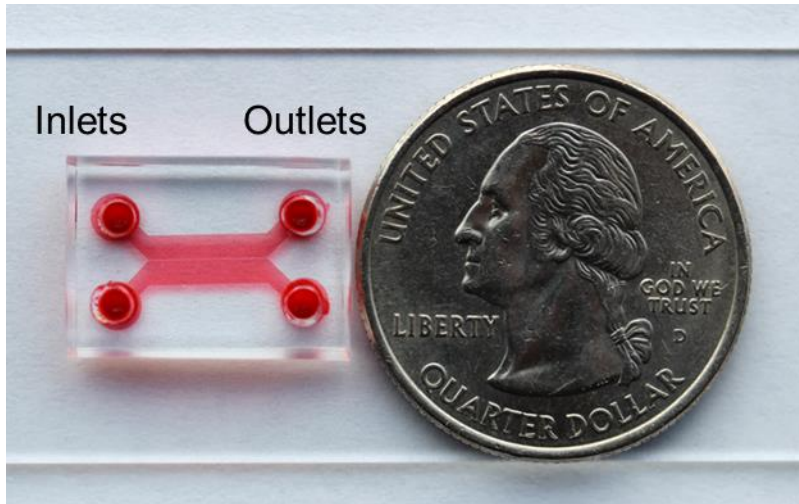


Figure S1 | Photo of retinal synaptic regeneration chip.

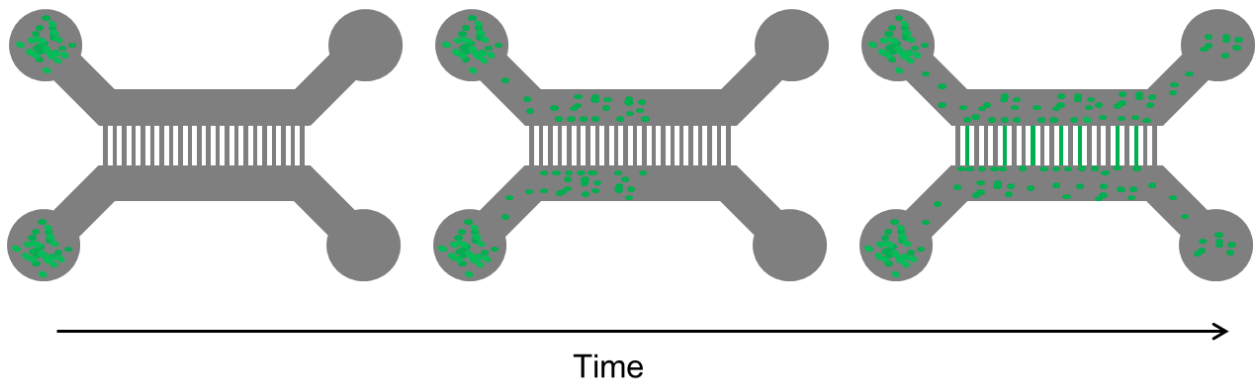


Figure S2 | Procedure of loading retina precursor cells. Loading cells through the chamber is controlled by gravitation pressure.

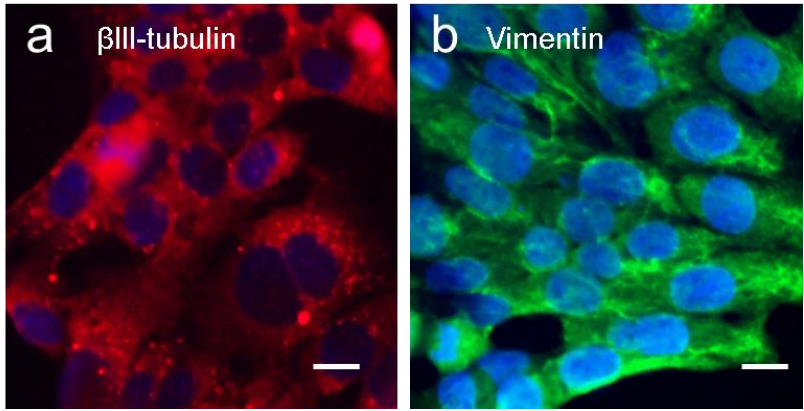


Figure S3 | Immunostaining of  $\beta$ III-tubulin as the biomarker of retinal ganglion cells and vimentin as the biomarker of Müller cells. Scale bar, 20  $\mu$ m.