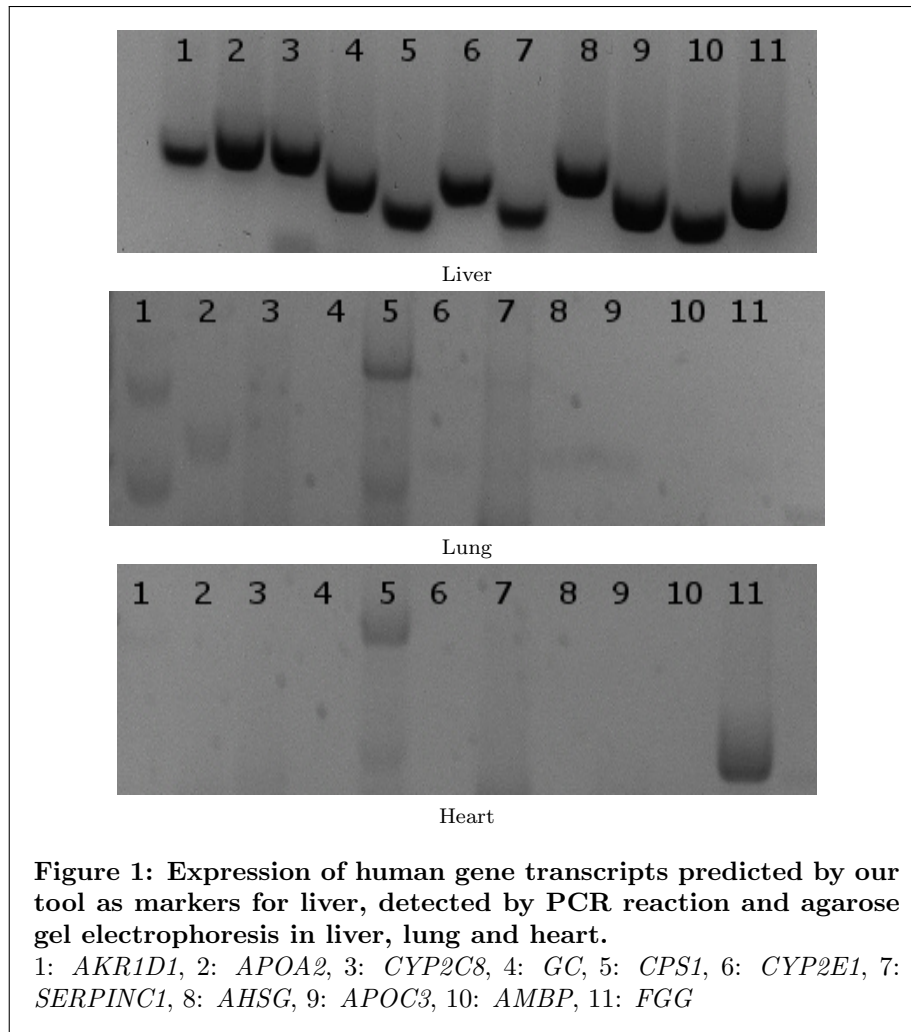
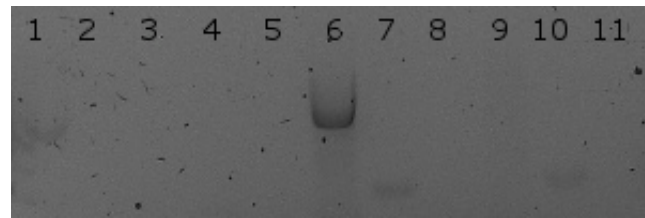
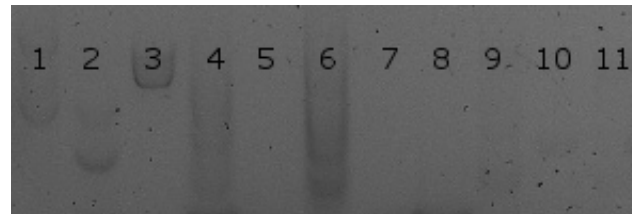


Gel electrophoresis images

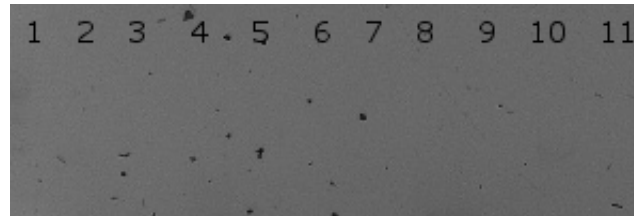




Brain



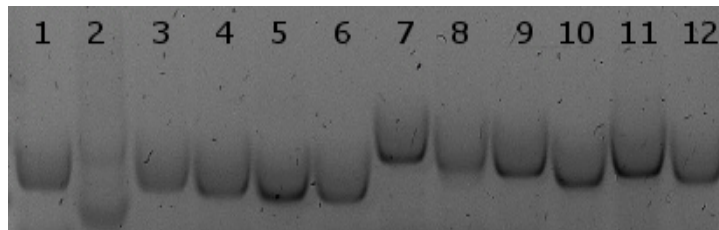
Kidney



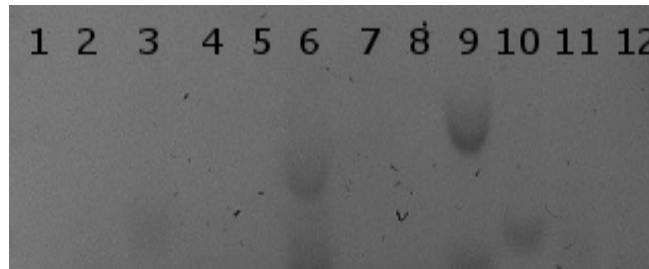
Negative Control

Figure 2: Expression of human gene transcripts predicted by our tool as markers for liver, detected by PCR reaction and agarose gel electrophoresis in brain, kidney and the negative control.

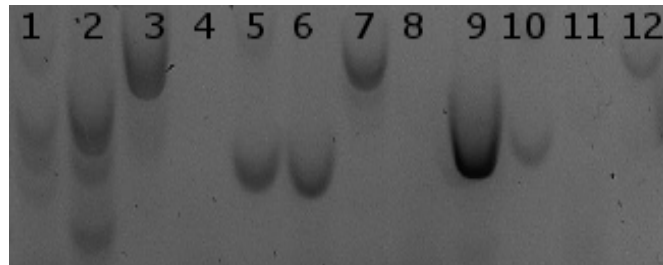
1: *AKR1D1*, 2: *FGG*, 3: *APOA2* 4: *CYP2C8*, 5: *GC*, 6: *CPS1*, 7: *CYP2E1*, 8: *APOC3*, 9: *SERPINC1*, 10: *AHSG*, 11: *AMBP*



Lung



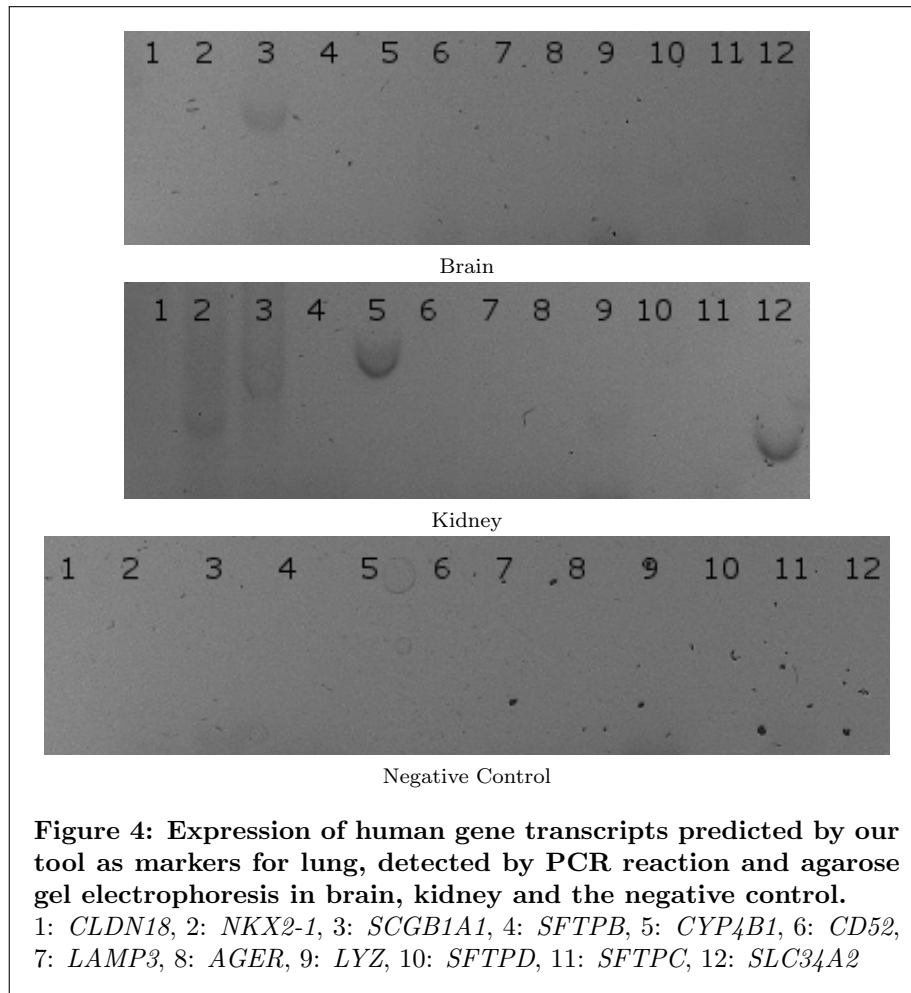
Liver

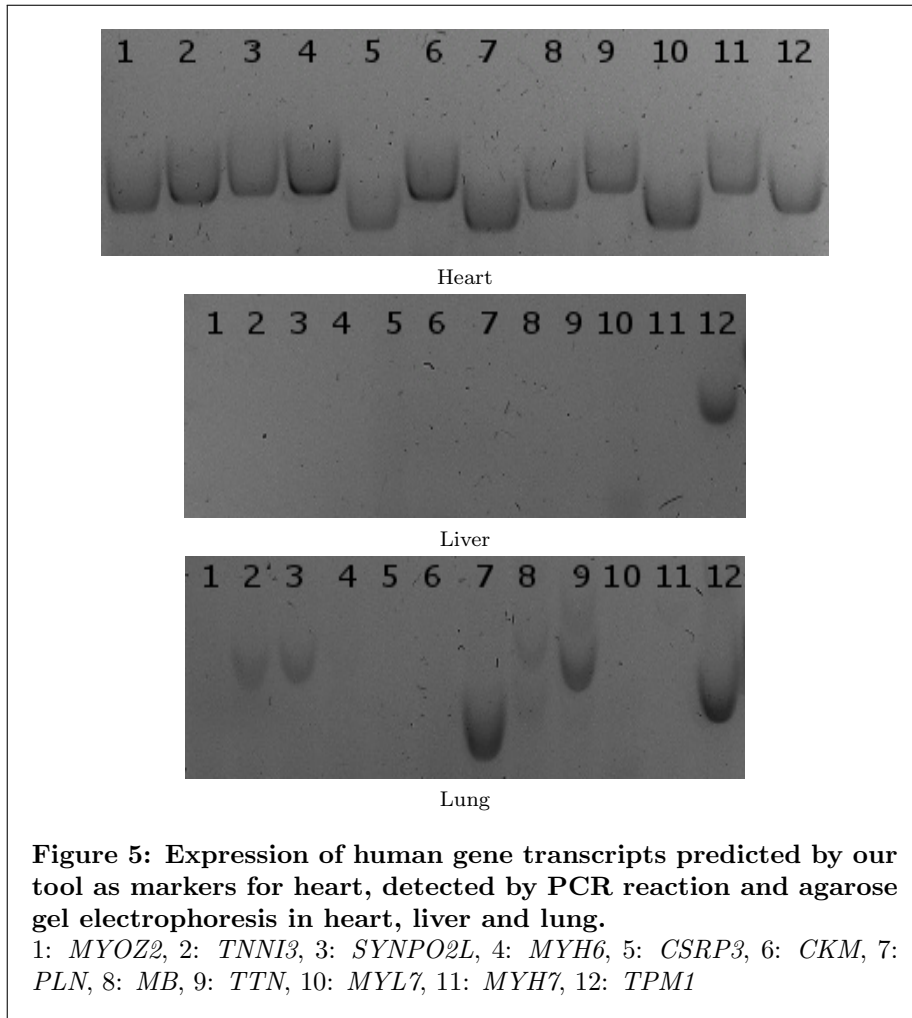


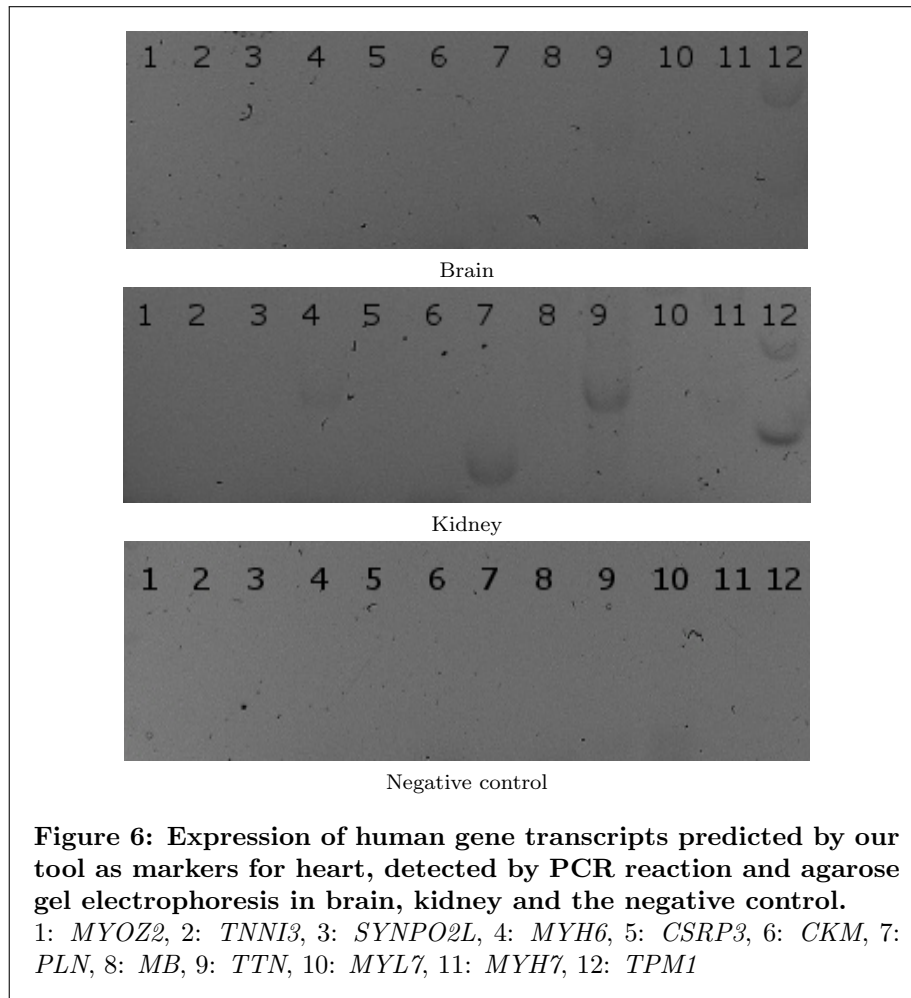
Heart

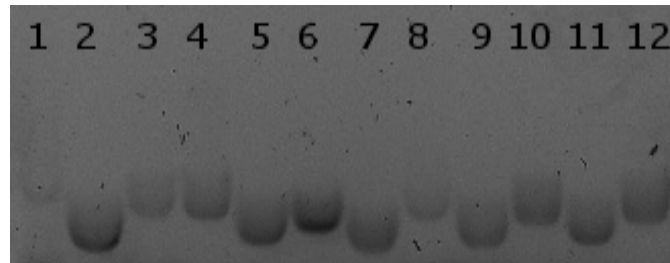
Figure 3: Expression of human gene transcripts predicted by our tool as markers for lung, detected by PCR reaction and agarose gel electrophoresis in lung, liver and heart.

1: *CLDN18*, 2: *NKX2-1*, 3: *SCGB1A1*, 4: *SFTPB*, 5: *CYP4B1*, 6: *CD52*, 7: *LAMP3*, 8: *AGER*, 9: *LYZ*, 10: *SFTPD*, 11: *SFTPC*, 12: *SLC34A2*

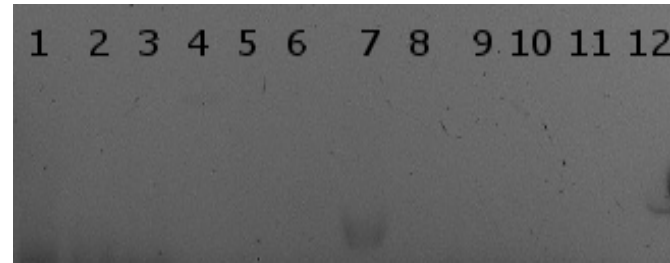




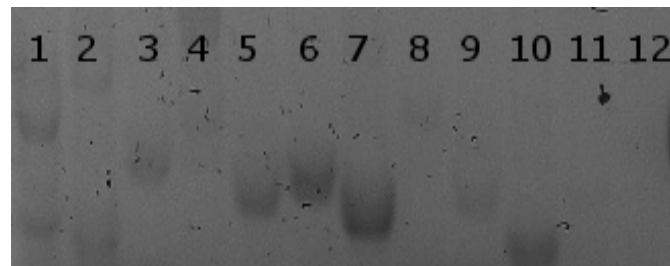




Brain



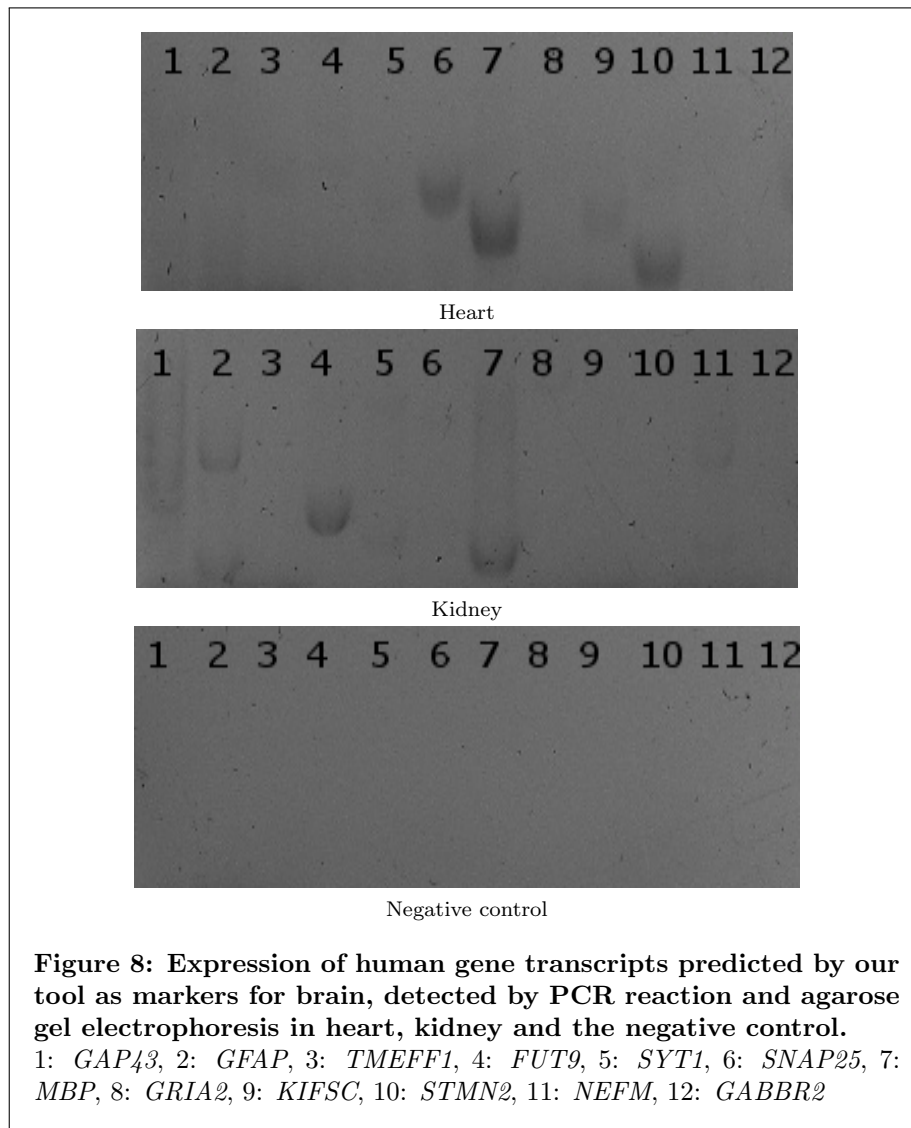
Liver



Lung

Figure 7: Expression of human gene transcripts predicted by our tool as markers for brain, detected by PCR reaction and agarose gel electrophoresis in brain, liver and lung.

1: *GAP43*, 2: *GFAP*, 3: *TMEFF1*, 4: *FUT9*, 5: *SYT1*, 6: *SNAP25*, 7: *MBP*, 8: *GRIA2*, 9: *KIF5C*, 10: *STMN2*, 11: *NEFM*, 12: *GABBR2*



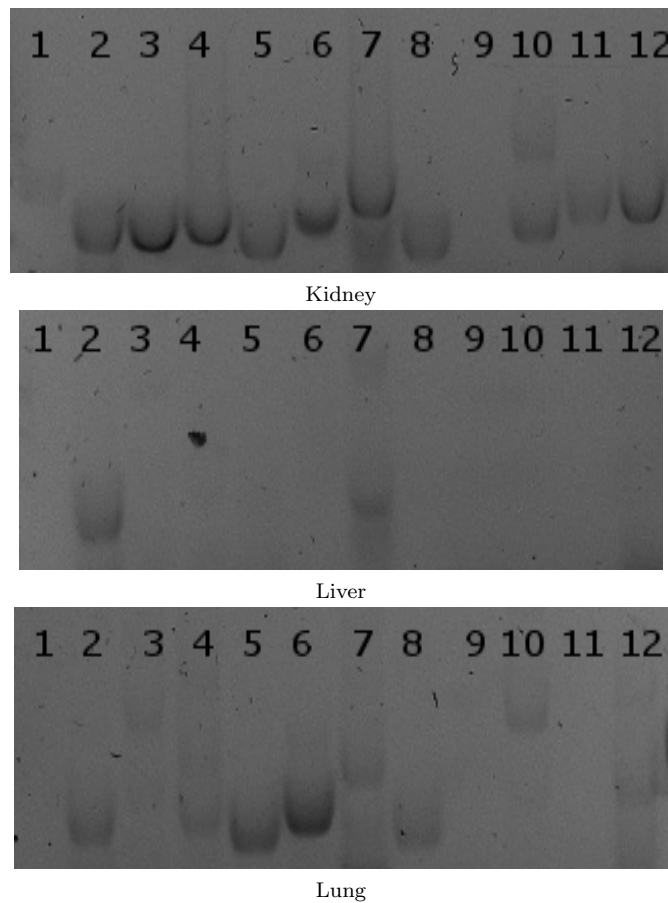
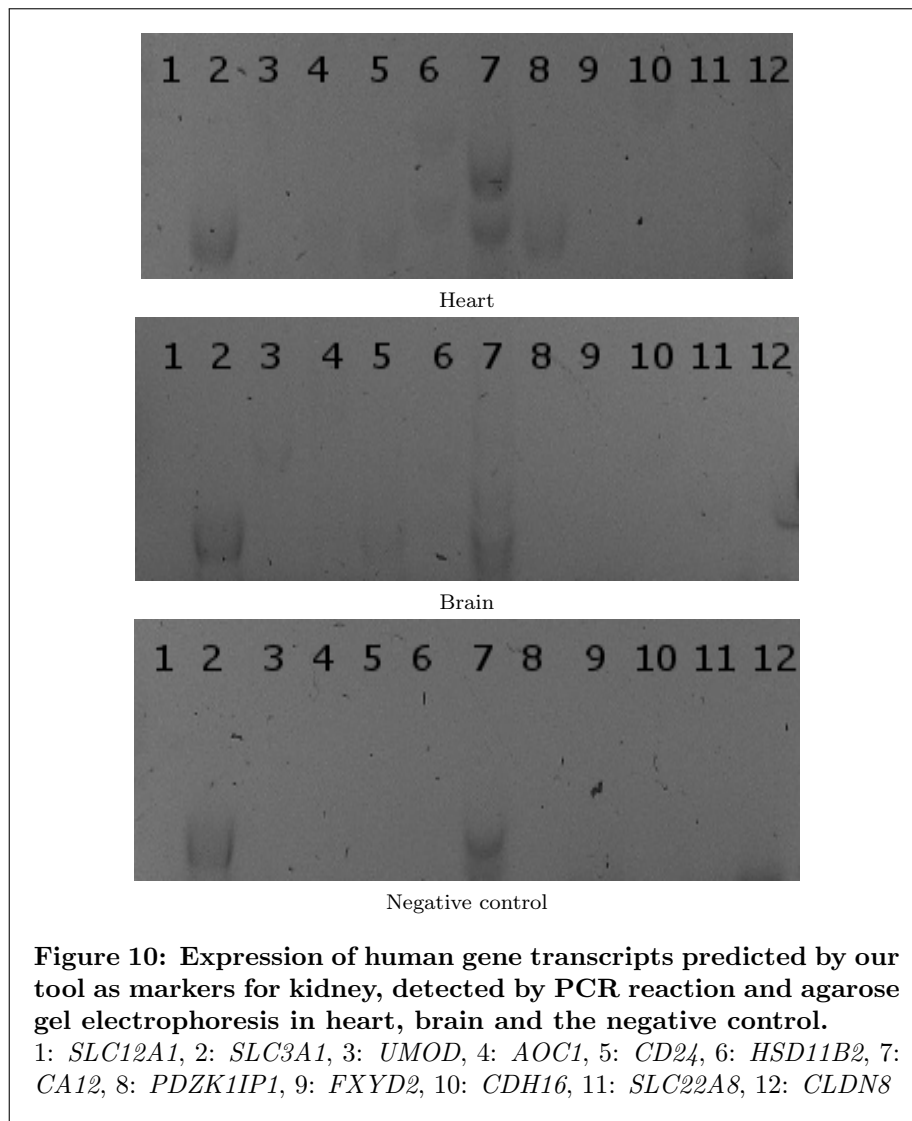


Figure 9: Expression of human gene transcripts predicted by our tool as markers for kidney, detected by PCR reaction and agarose gel electrophoresis in kidney, liver and lung.

1: *SLC12A1*, 2: *SLC3A1*, 3: *UMOD*, 4: *AOC1*, 5: *CD24*, 6: *HSD11B2*, 7: *CA12*, 8: *PDZK1IP1*, 9: *FXYD2*, 10: *CDH16*, 11: *SLC22A8*, 12: *CLDN8*



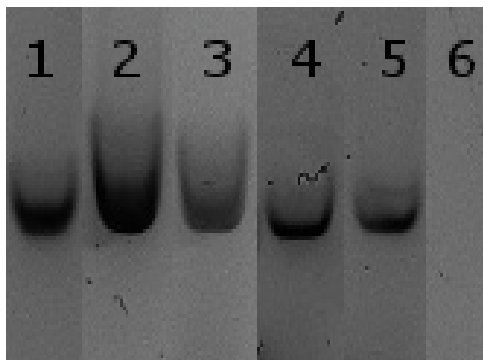


Figure 11: Expression of the human gene transcript β -actin, detected by PCR reaction and agarose gel electrophoresis in liver (1), lung (2), heart (3), brain (4), kidney (5) and the negative control (6).