

ADDITIONAL FILE 6: SUPPLEMENTARY FIGURES

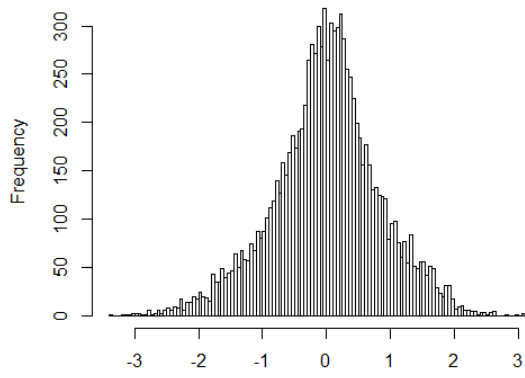
Genetic Determinants Of Anti-Malarial Acquired Immunity In A Large Multi-Centre Study

Jennifer M.G. Shelton, Patrick Corran, Paul Risley, Nilupa Silva, Christina Hubbart, Anna Jeffreys, Kate Rowlands, Rachel Craik, Victoria Cornelius, Meike Hensmann, Sile Molloy, Nuno Sepulveda, Taane G. Clark, Gavin Band, Geraldine M. Clarke, Christopher C.A. Spencer, Angeliki Kerasidou, Susana Campino, Sarah Auburn, Adama Tall, Alioune Badara Ly, Odile Mercereau-Puijalon, Anavaj Sakuntabhai, Abdoulaye Djimde, Boubacar Maiga, Ousmane Toure, Ogobara Doumbo, Amagana Dolo, Marita Troye-Blomberg, Valentina D. Mangano, Frederica Verra, David Modiano, Edith Bougouma, Sodiomon B. Sirima, Muntaser Ibrahim, Ayman Hussain, Nahid Eid, Abier Elzein, Hiba Mohamed, Ahmed Elhassan, Ibrahim Elhassan, Thomas N. Williams, Carolyne Ndila, Alexander Macharia, Kevin Marsh, Alphaxard Manjurano, Hugh Reyburn, Martha Lemnge, Deus Ishengoma, Richard Carter, Nadira Karunaweera, Deepika Fernando, Rajika Dewasurendra, Christopher J. Drakeley, Eleanor M. Riley, Dominic P. Kwiatkowski, and Kirk A. Rockett, in collaboration with the MalariaGEN Consortium,

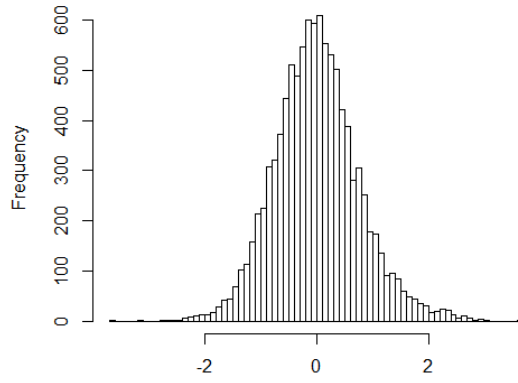
Corresponding authors Kirk A. Rockett and Dominic P. Kwiatkowski
Wellcome Trust Centre for Human Genetics, University of Oxford, Roosevelt Drive, Oxford, UK

This file contains **Additional Figure SF2**: Histograms of residuals from antibody linear regression models with non-genetic factors.

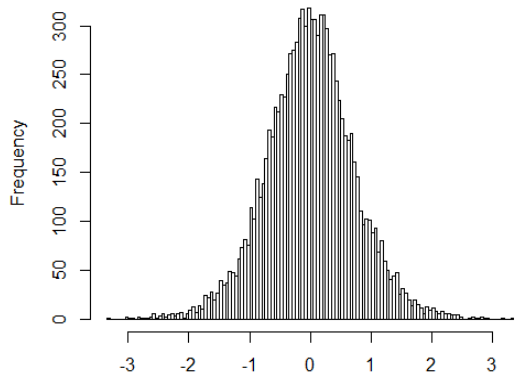
Additional Figure SF2: Histograms of residuals from antibody linear regression models with non-genetic factors.



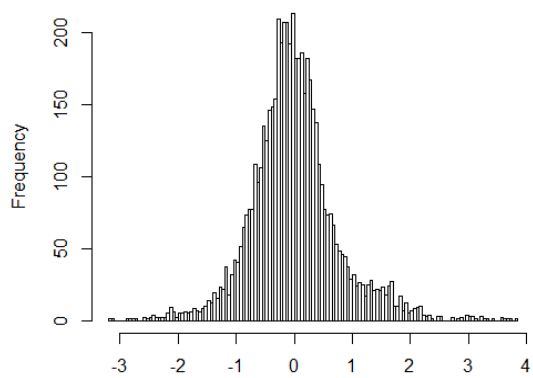
Residuals from anti-AMA1 regression model



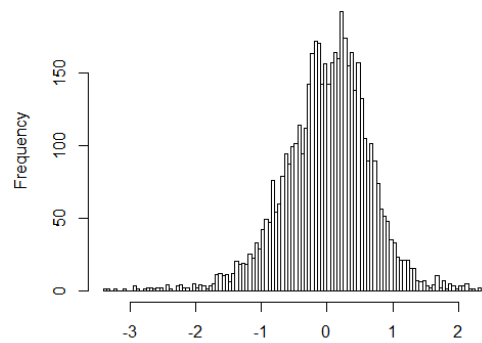
Residuals from anti-MSP1 regression model



Residuals from anti-MSP2 regression model



Residuals from anti-NANP regression model



Residuals from IgE regression model