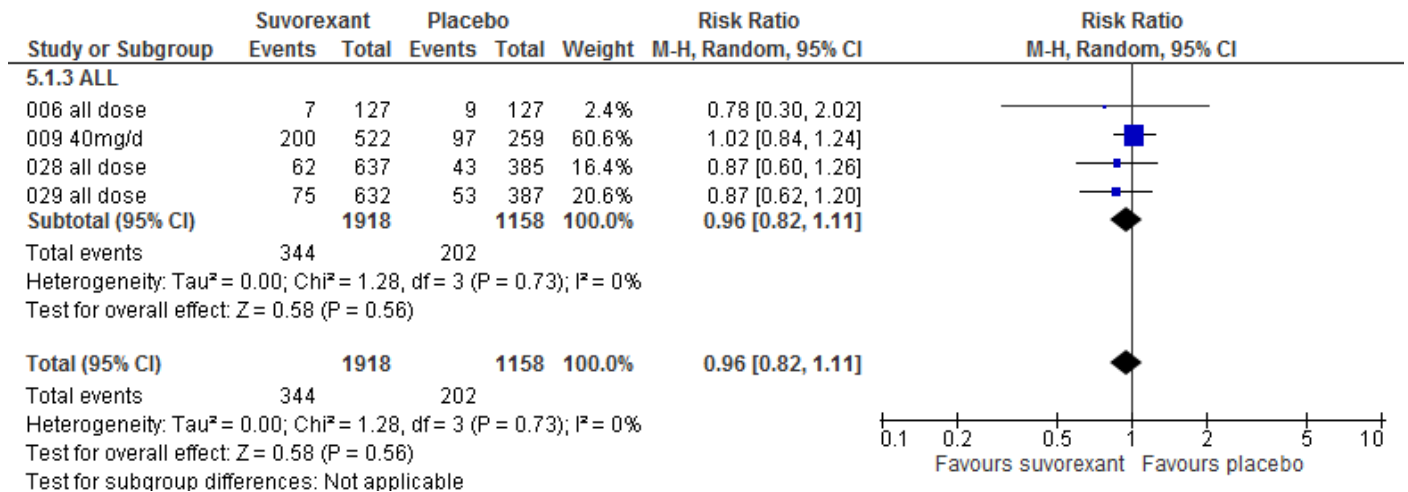
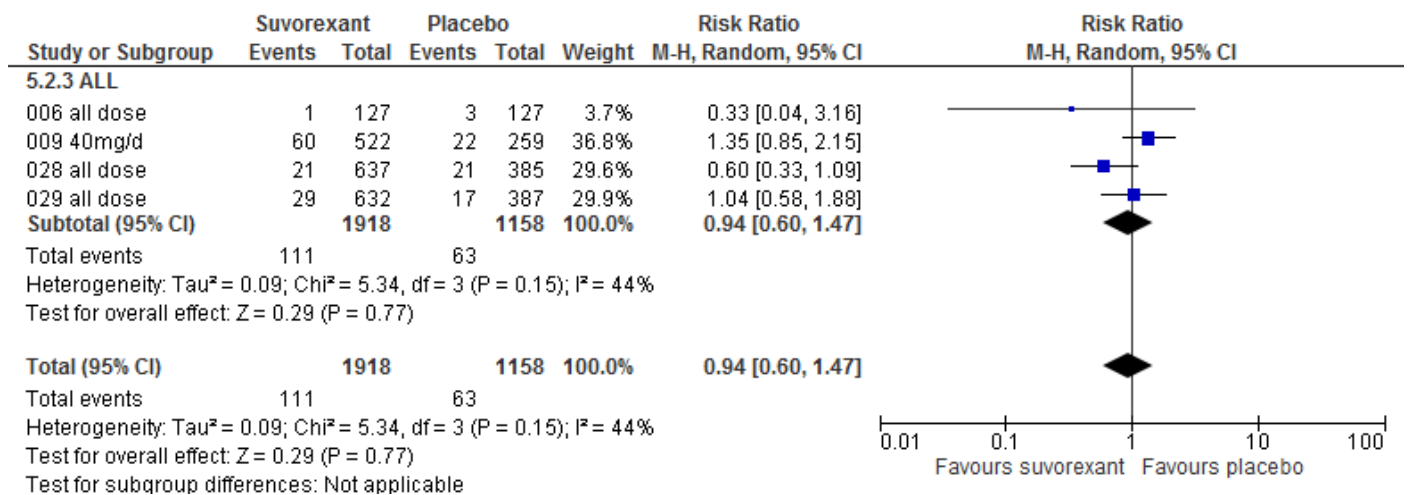


S2 Fig. Forest plots of safety secondary outcomes.

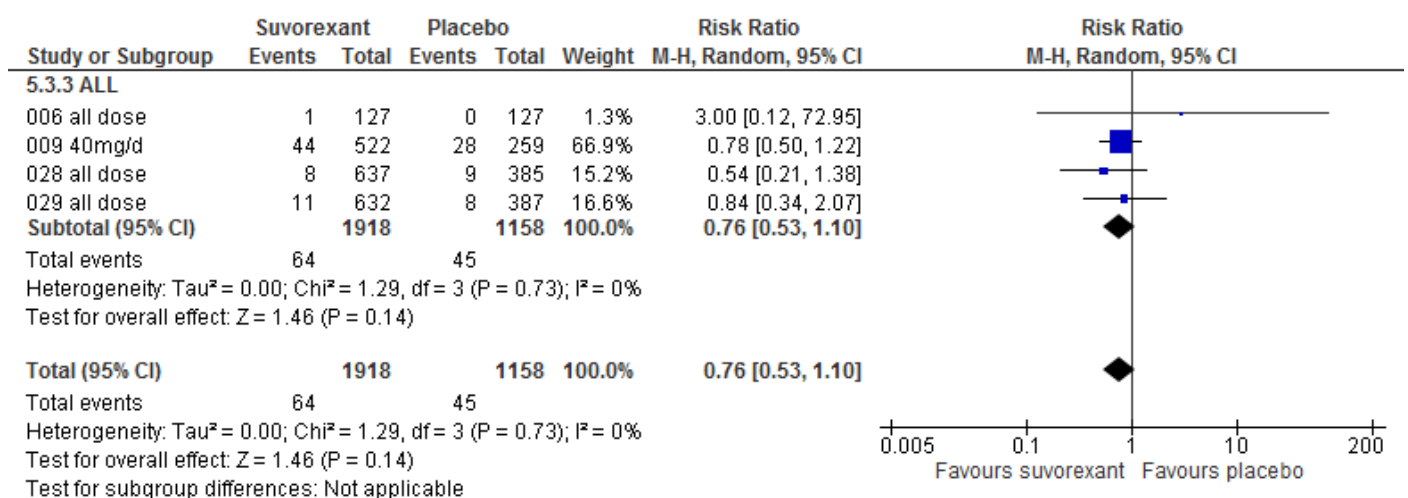
S2-1 Fig. Discontinuation due to all cause



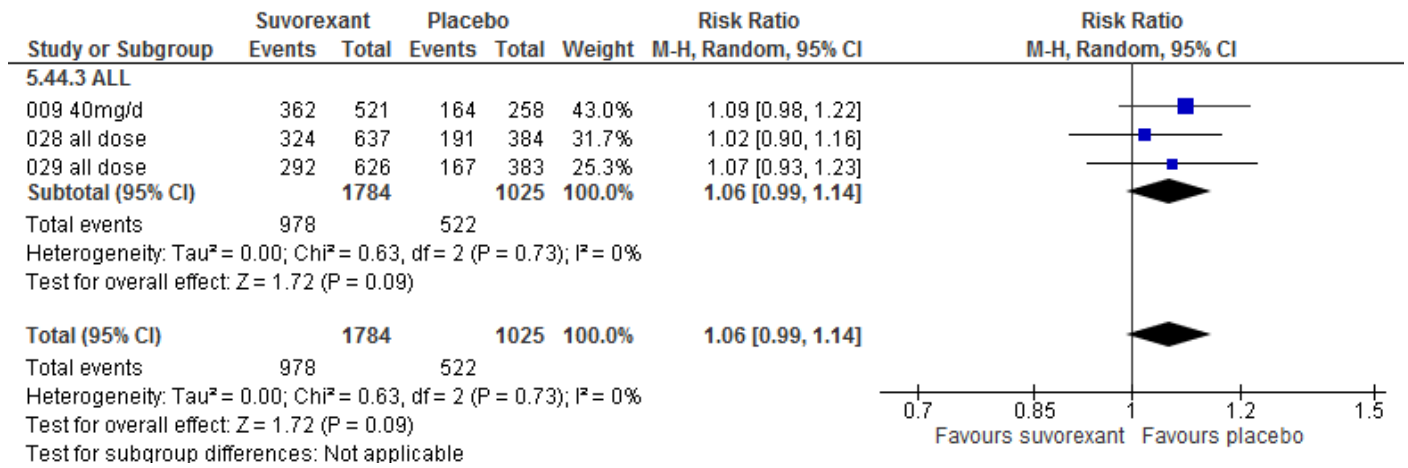
S2-2 Fig. Discontinuation due to intolerability



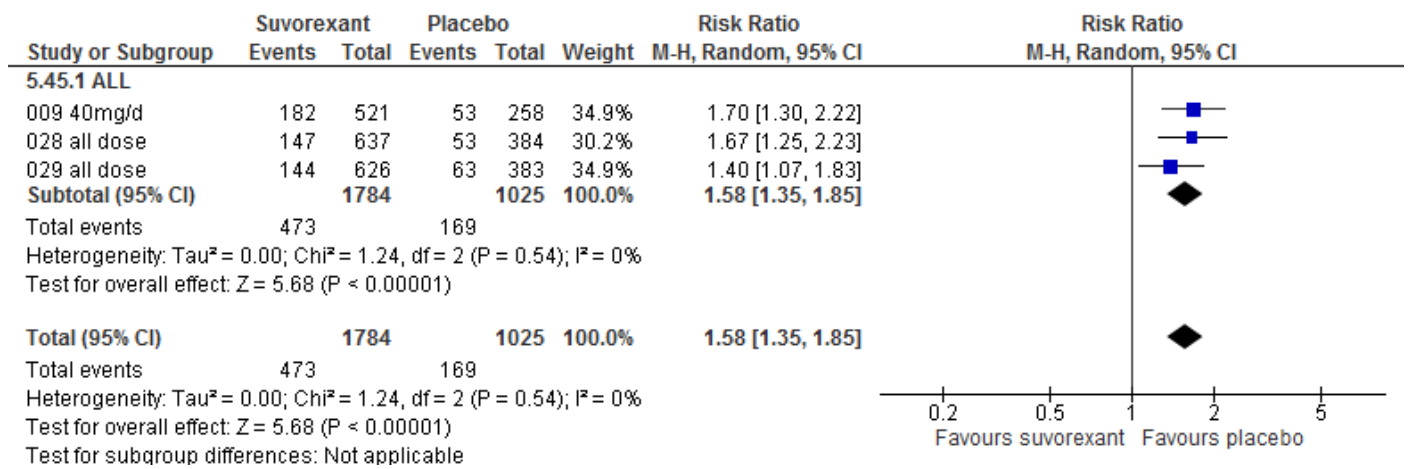
S2-3 Fig. Discontinuation due to inefficacy



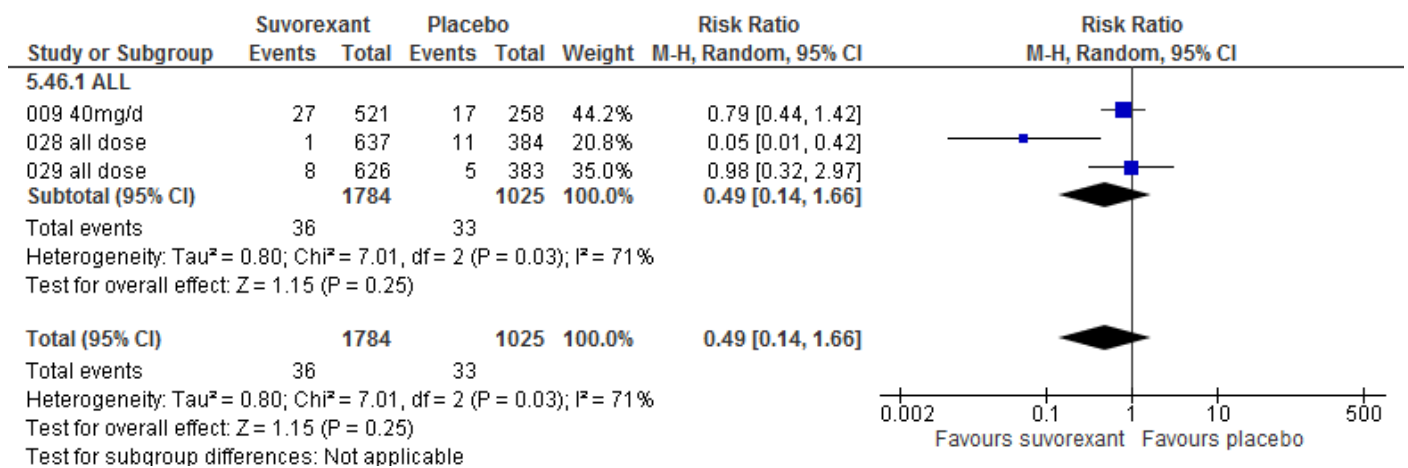
S2-4 Fig. At least one adverse event



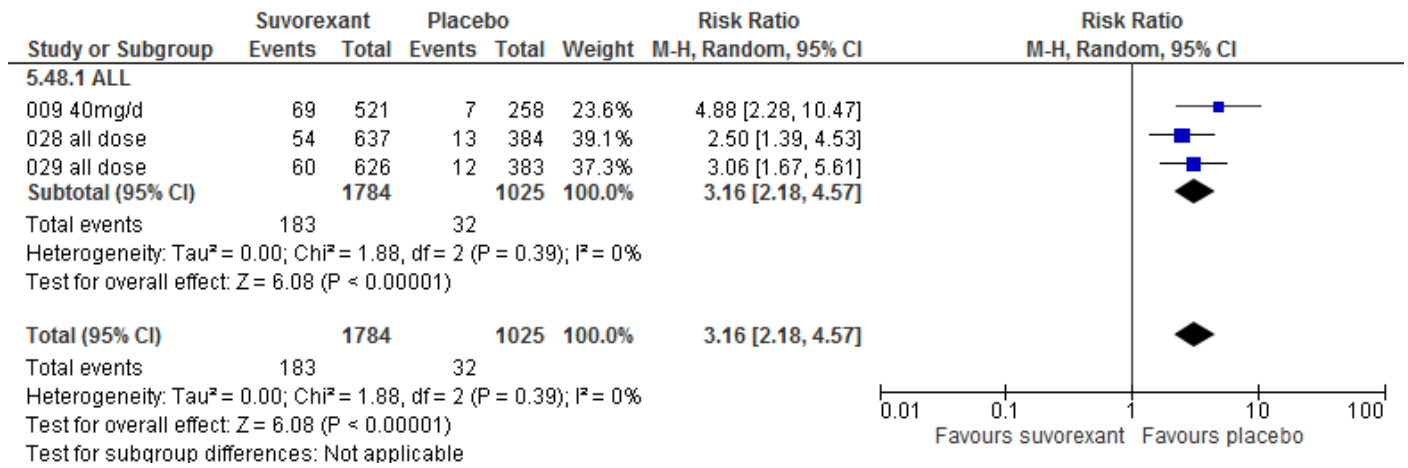
S2-5 Fig. At least one side effect



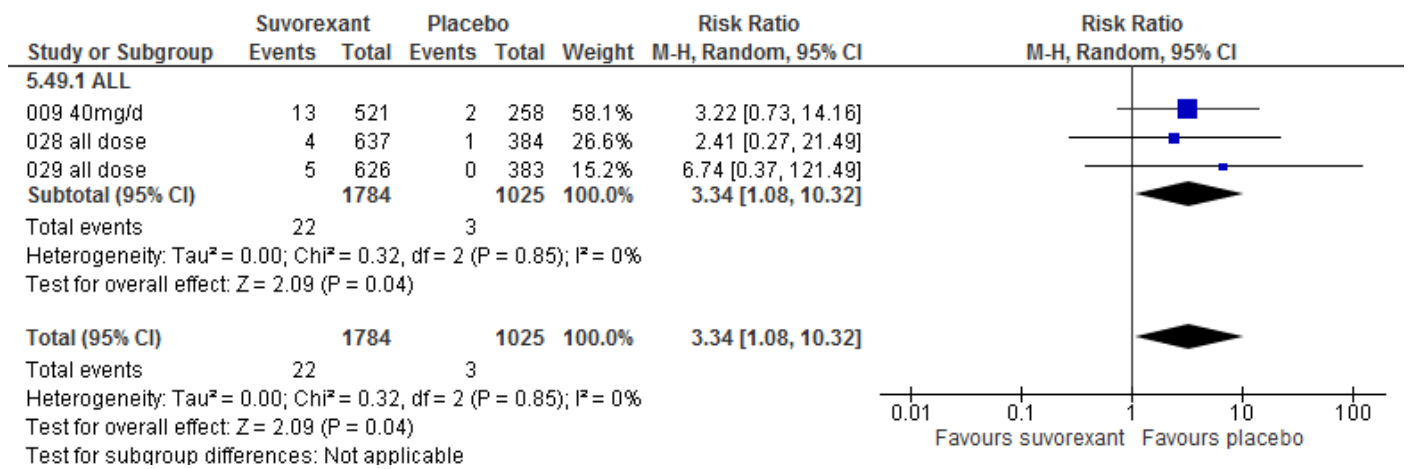
S2-6 Fig. Serious adverse event



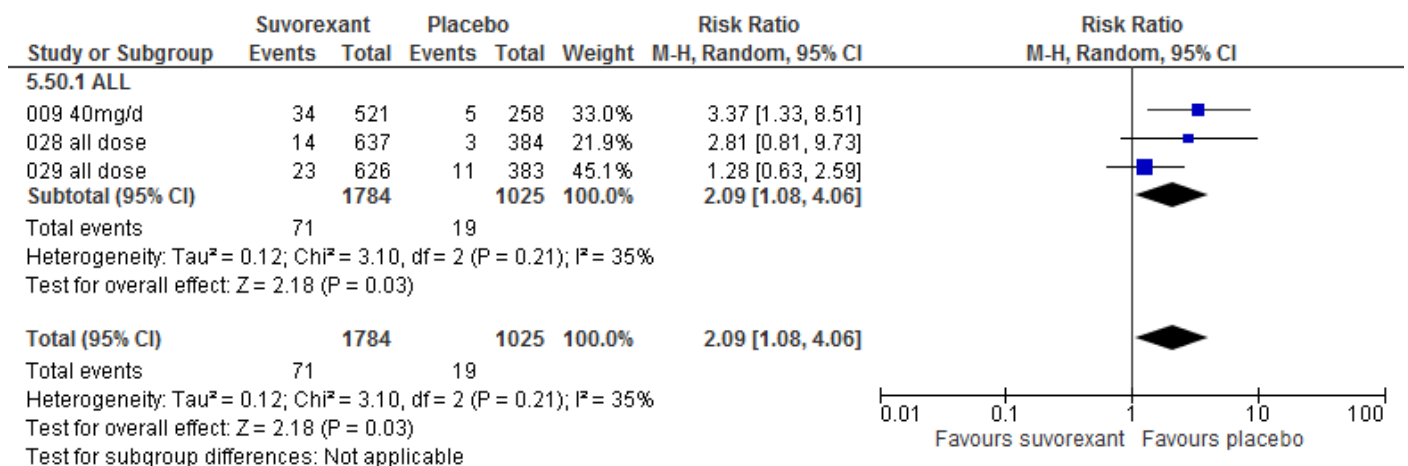
S2-7 Fig. Somnolence



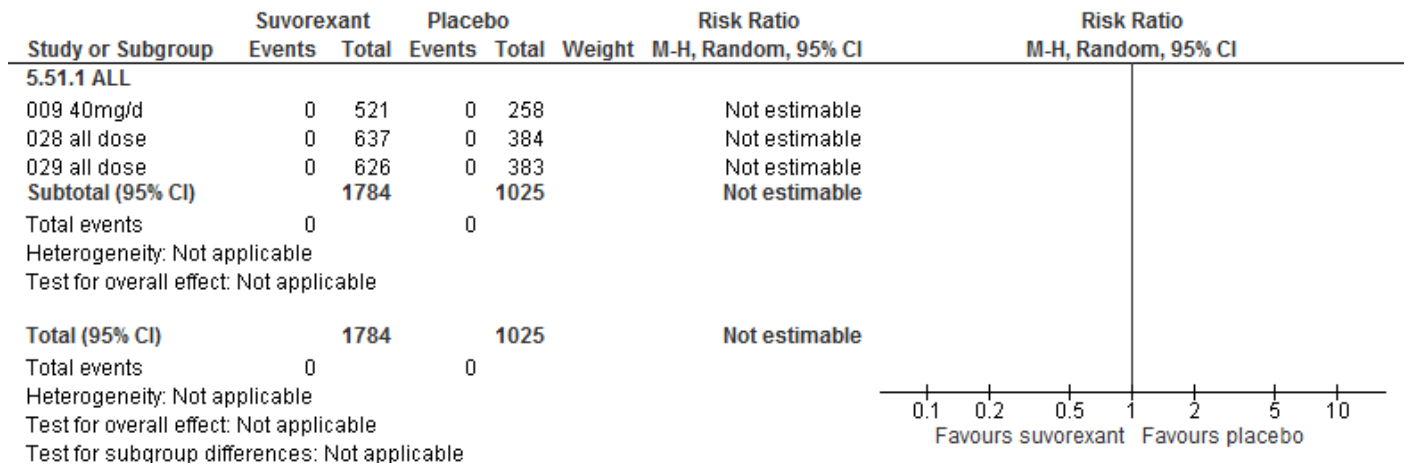
S2-8 Fig. Excessive daytime sleepiness/sedation



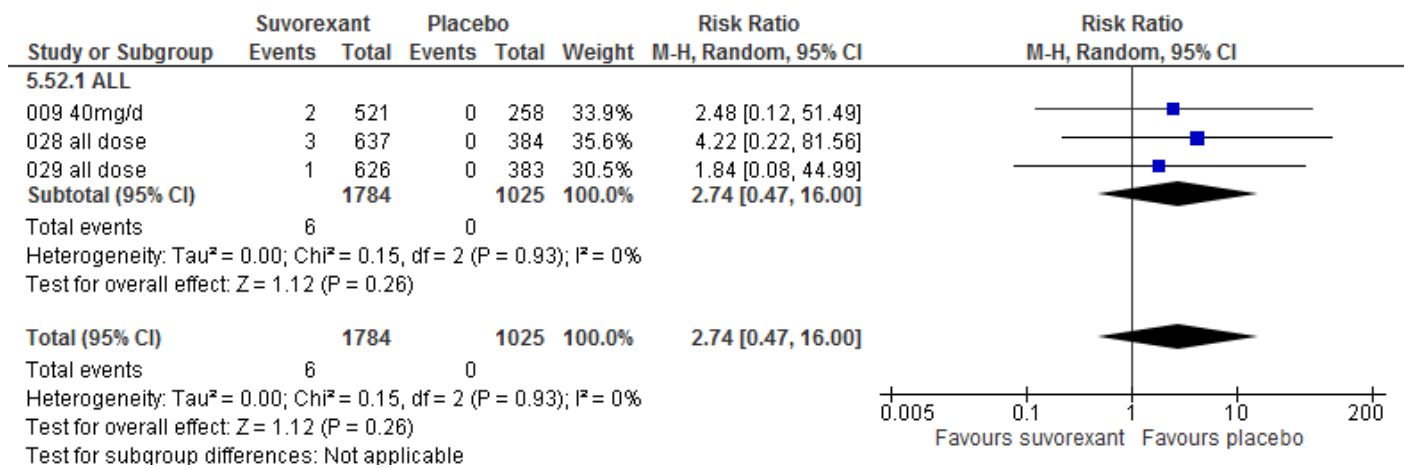
S2-9 Fig. Fatigue



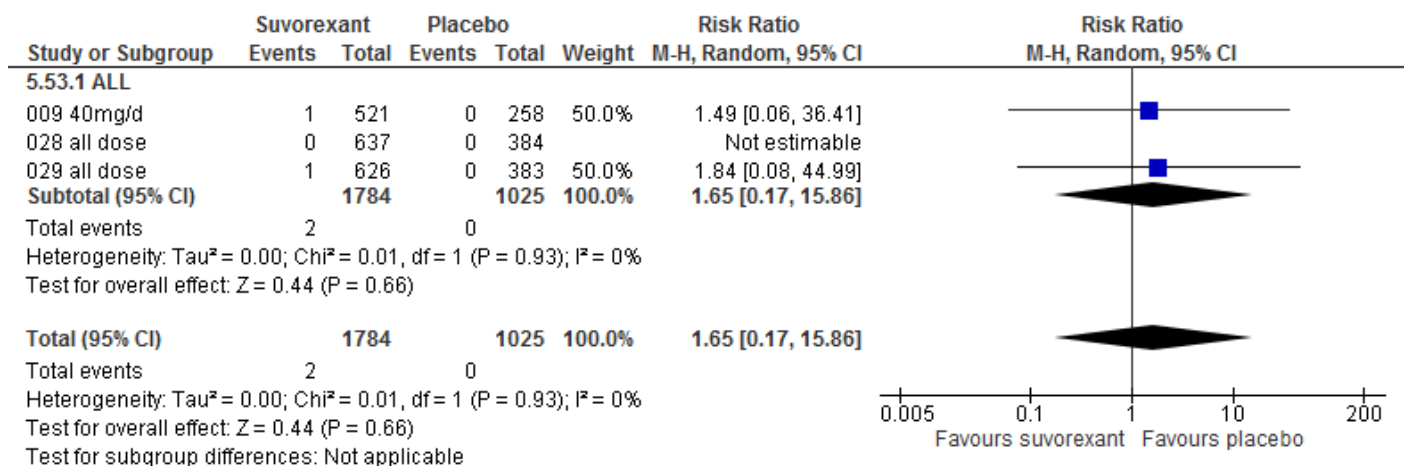
S2-10 Fig. Cataplexy



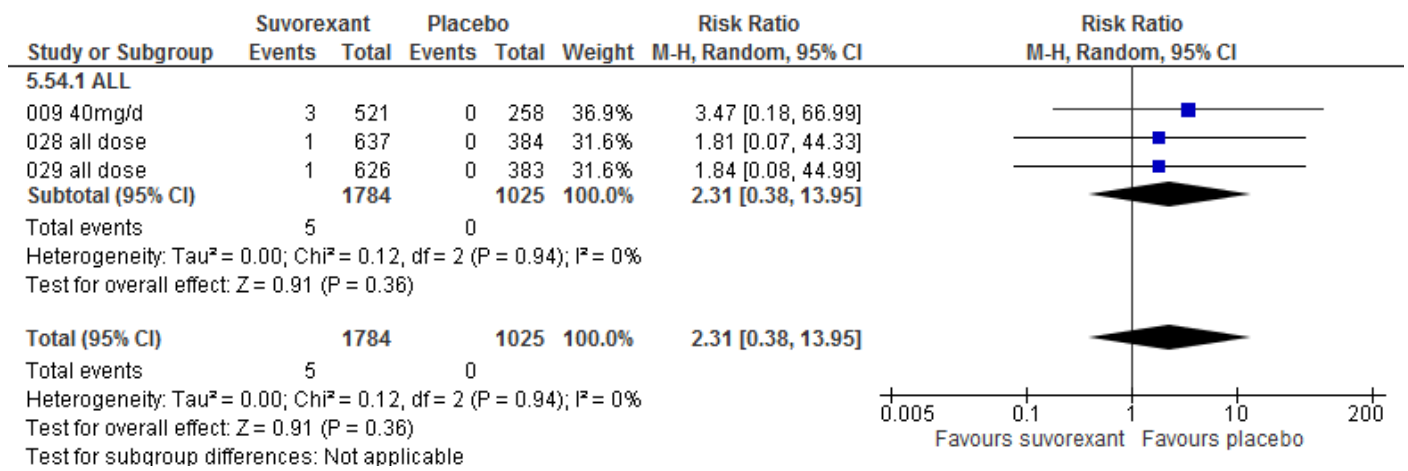
S2-11 Fig. Sleep paralysis



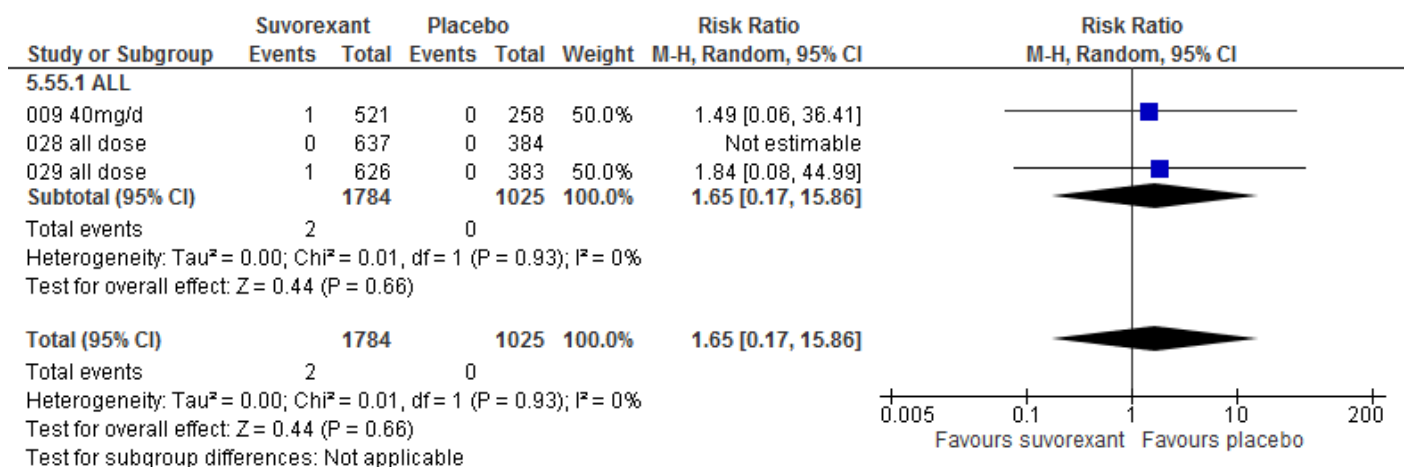
S2-12 Fig. Complex sleep-related behaviours



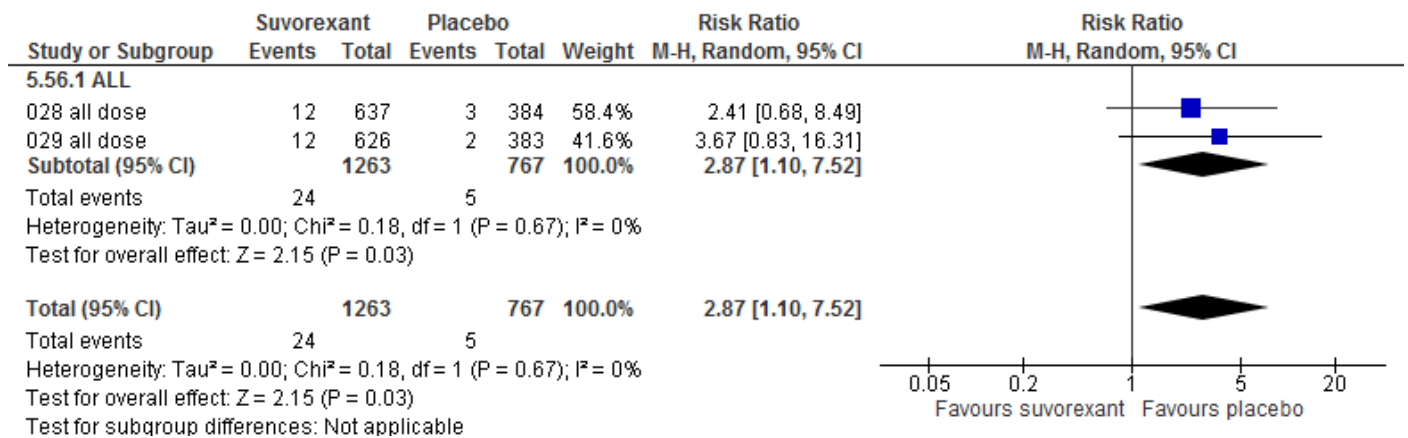
S2-13 Fig. Hypnagogic hallucination



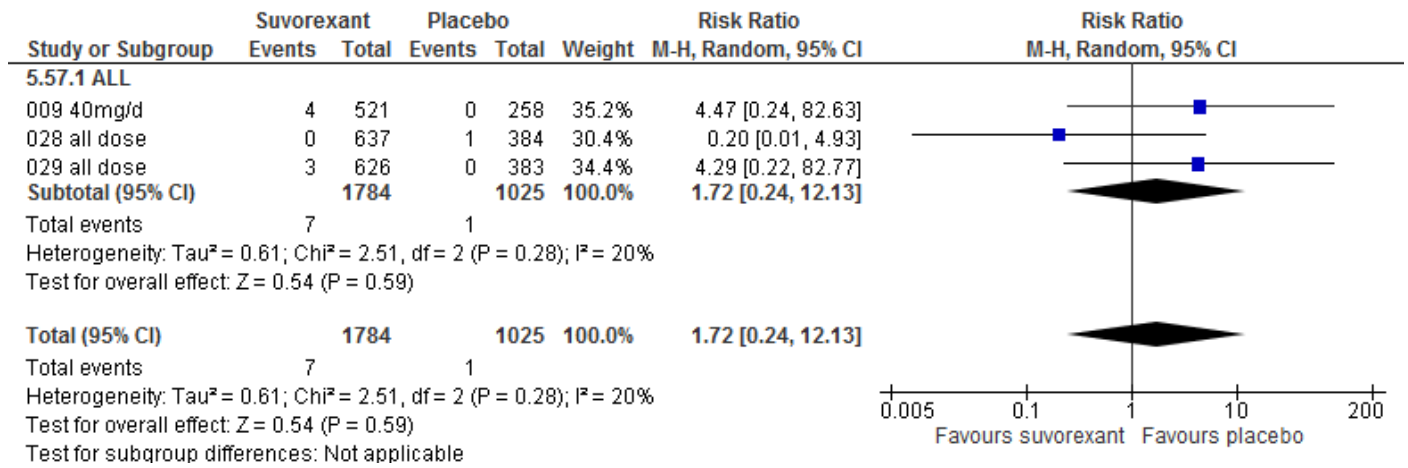
S2-14 Fig. Hypnopompic hallucination



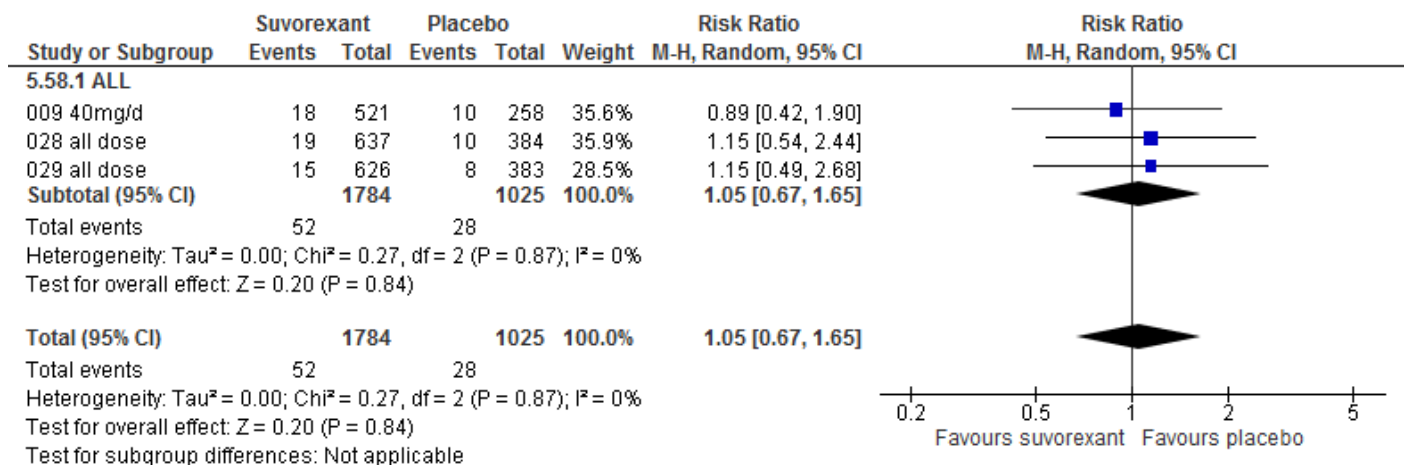
S2-15 Fig. Abnormal dream



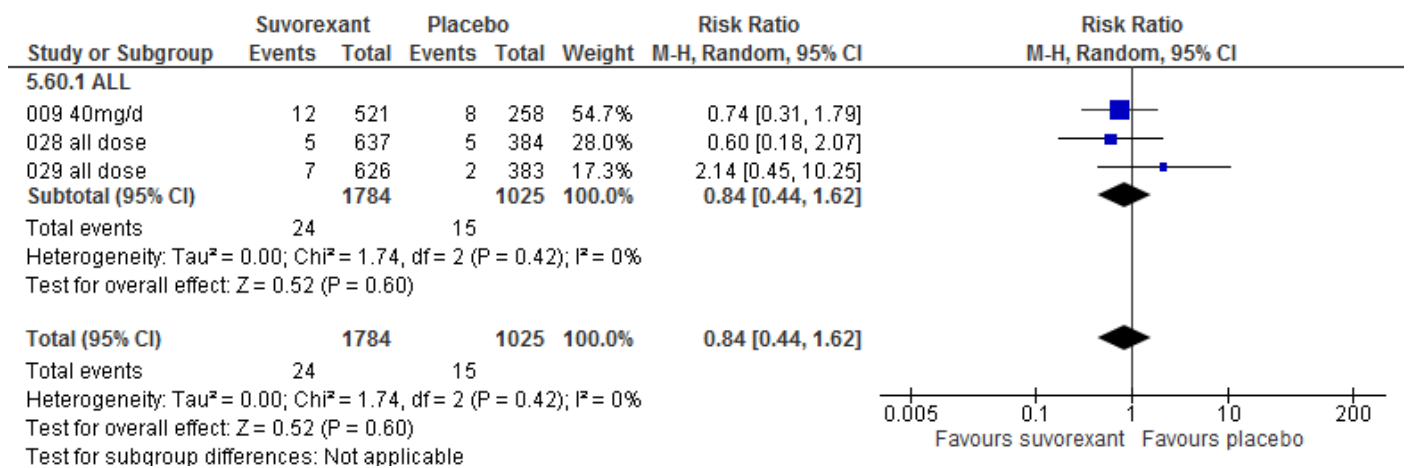
S2-16 Fig. Suicidal ideation



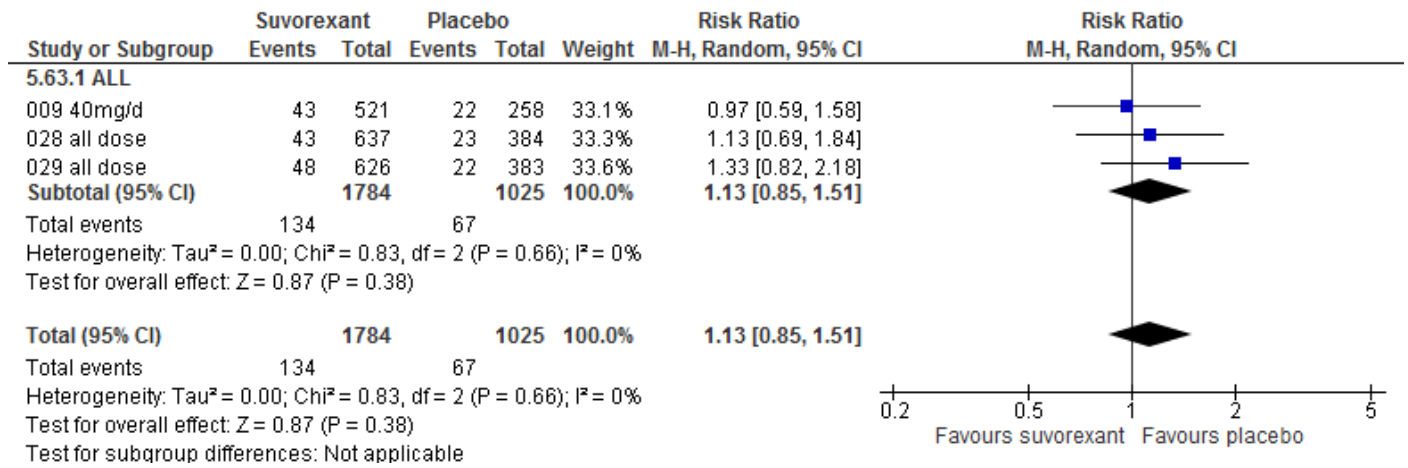
S2-17 Fig. Events suggesting drug-abuse potential



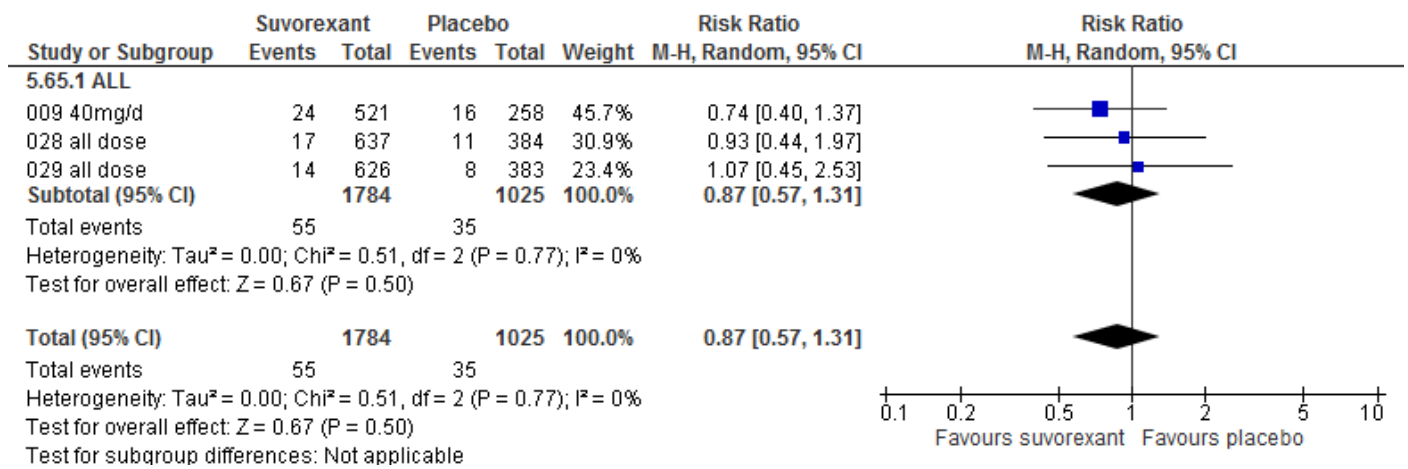
S2-18 Fig. Fall



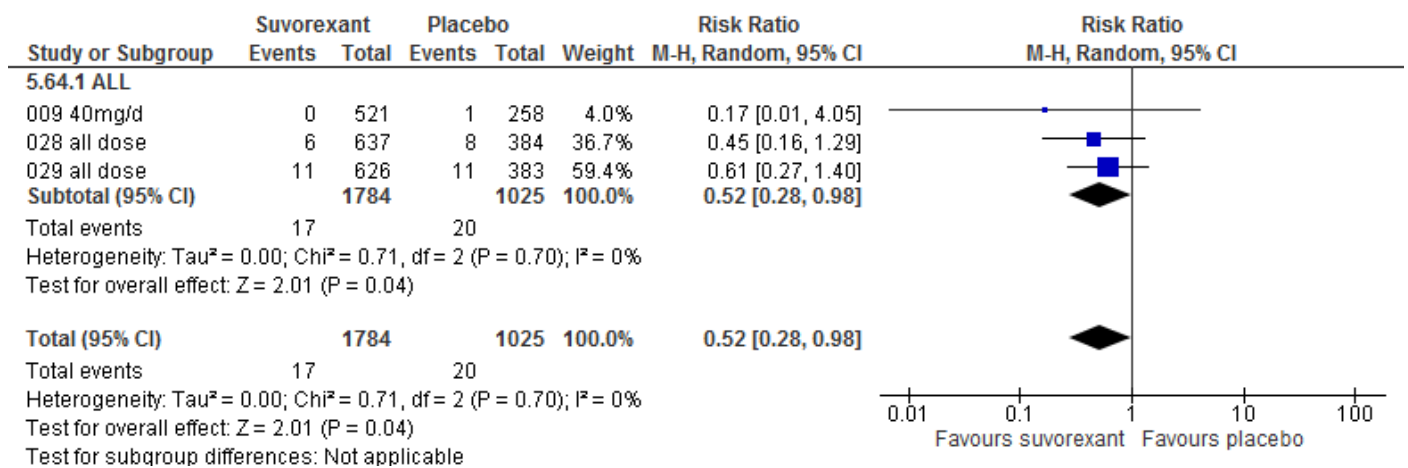
S2-19 Fig. Headache



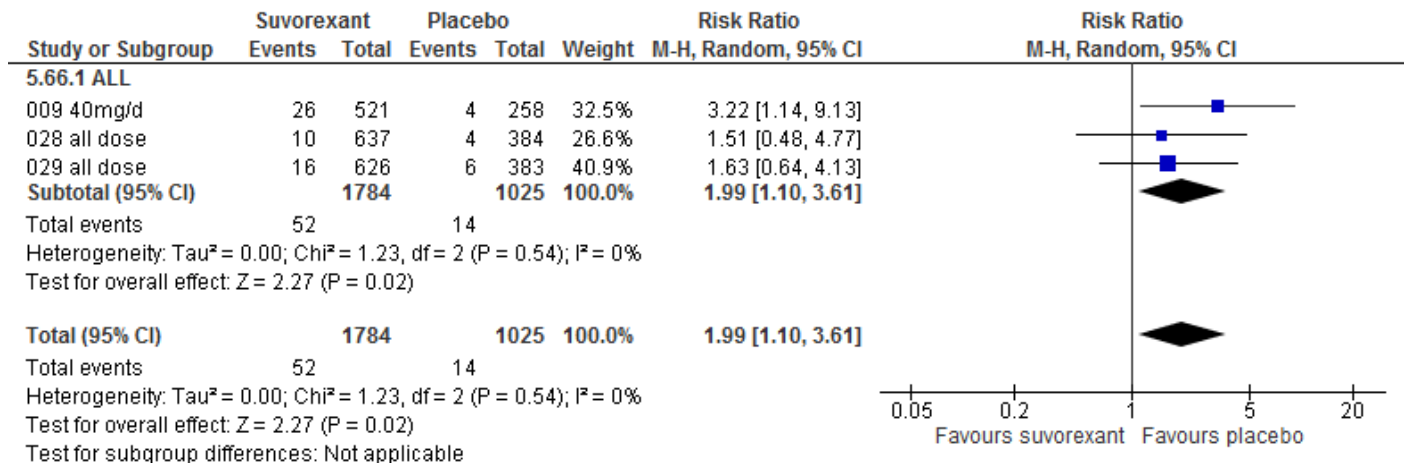
S2-20 Fig. Dizziness



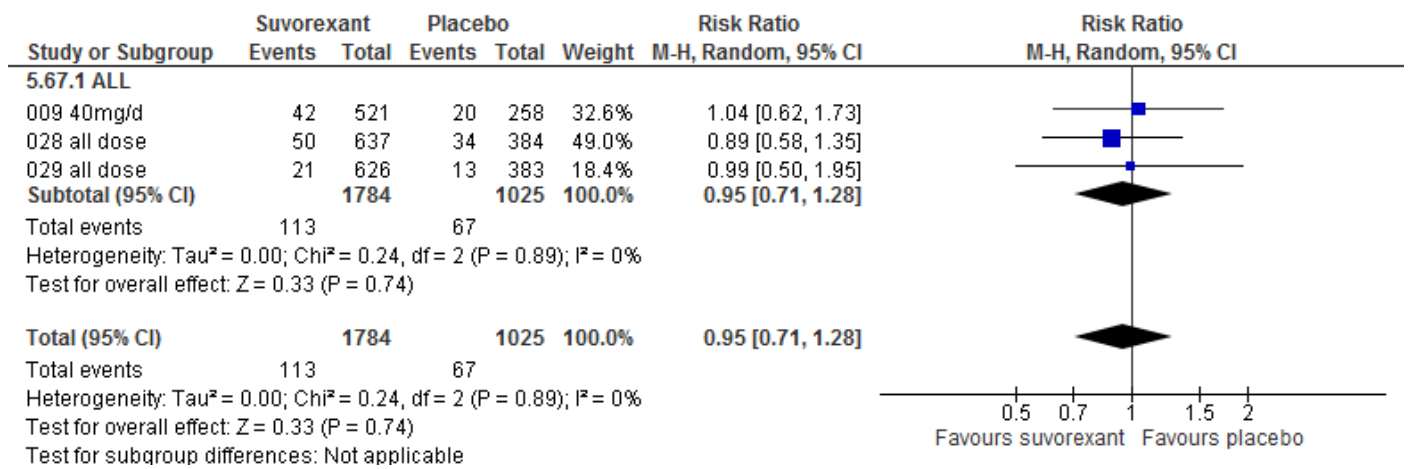
S2-21 Fig. Back pain



S2-22 Fig. Dry mouth



S2-23 Fig. Nasopharyngitis



S2-24 Fig. Motor vehicle accidents/violations

