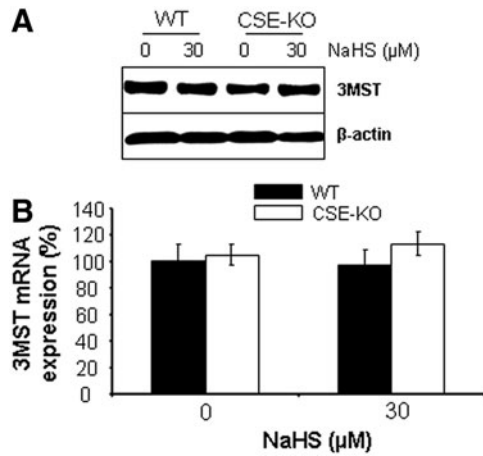


## Supplementary Data



**SUPPLEMENTARY FIG. S1. CSE/H<sub>2</sub>S system has no effect on 3MST expression.** WT and CSE-KO SMCs were incubated with or without NaHS (30  $\mu\text{M}$ ) for 48 hours following detection of 3MST protein (**A**) and mRNA (**B**) expression. The experiments were repeated for 3 times.