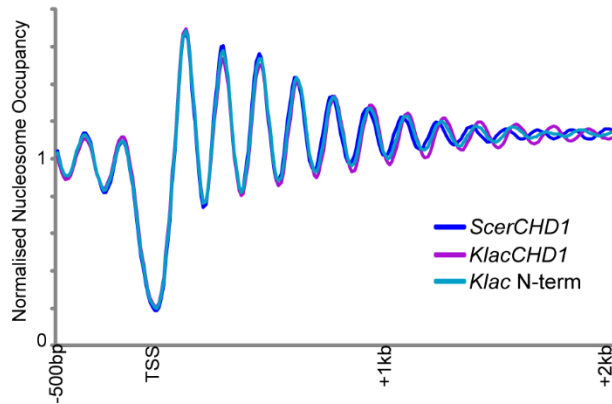
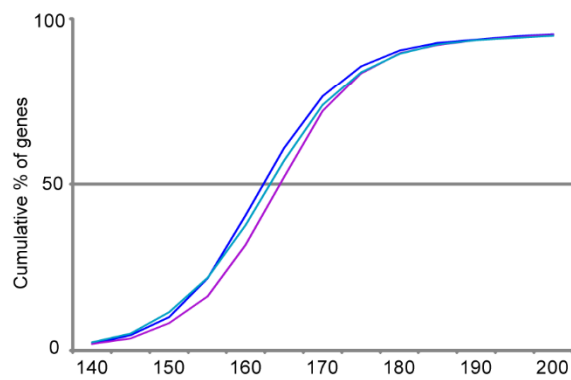


Figure S4

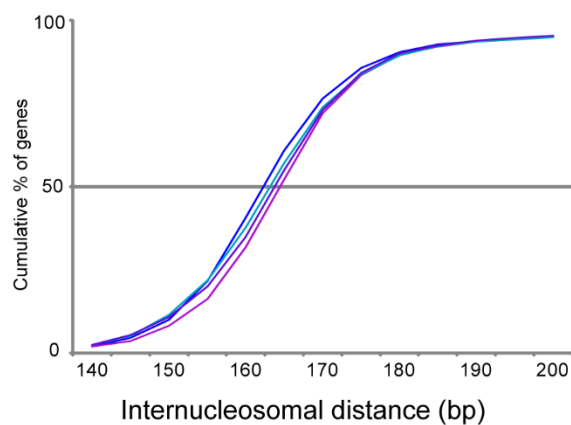
A



B



C



**Figure S4 Differences between *S. cerevisiae* and *K. lactis* Chd1 that affect nucleosome spacing are distributed throughout the protein. (A)** Genome-wide nucleosome mapping data are shown for strains carrying both species' *CHD1* orthologs, and for a strain carrying a chimaeric *CHD1* with only the N-terminal portion of the *K. lactis* ortholog. **(B-C)** Cumulative distribution plots of internucleosome distances for the indicated chimaeric *CHD1* strains.