

Figure S4

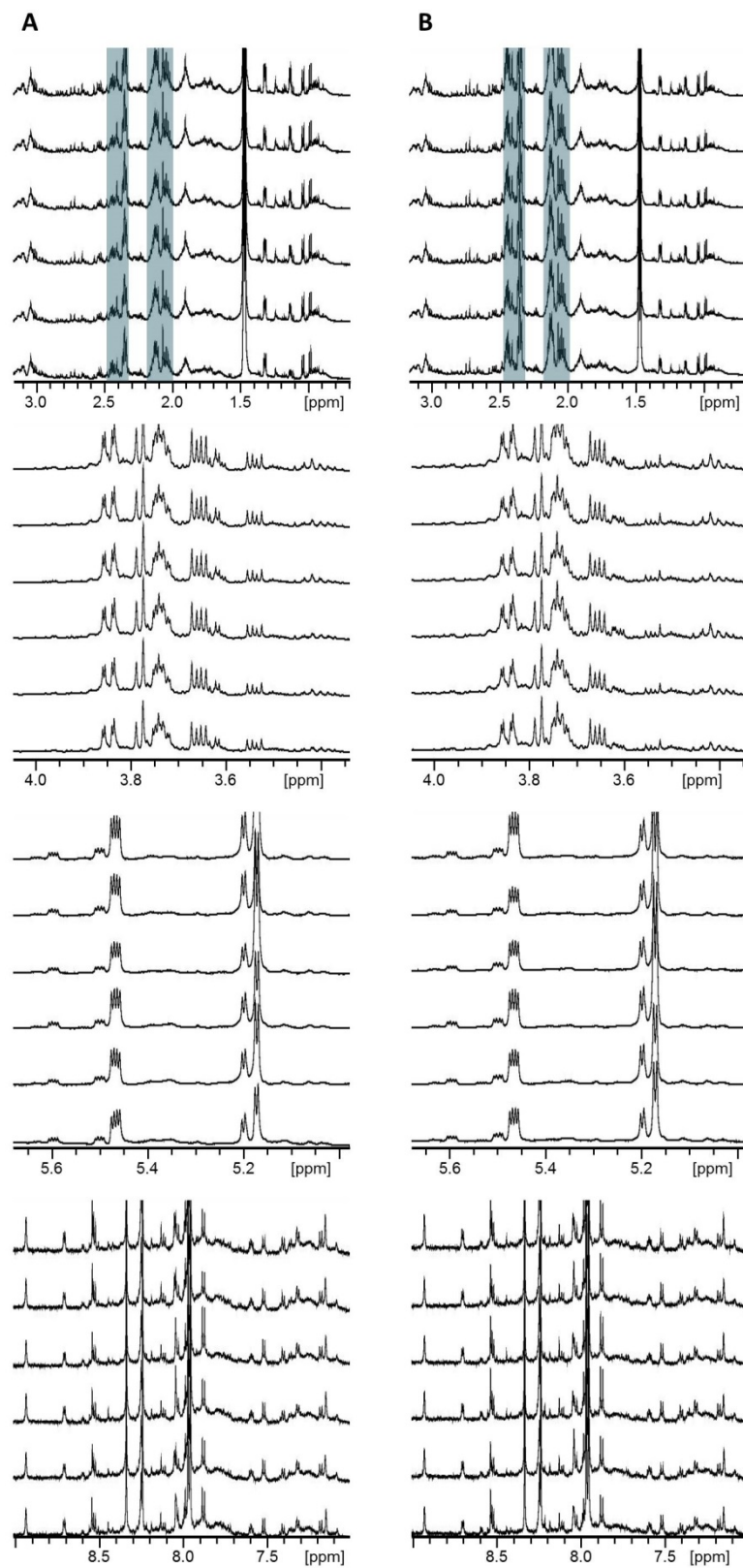


Figure S4. Overlays of the ^1H NMR spectra for all six replicates of strain pnit-6_1.5. The resonances of Gln and Glu are highlighted in blue. Each spectral region is scaled to compensate for differences in resonance intensity.

A. Spectra measured for biological replicates of pnit-6_1.5 cultured on VM-nitrate.

B. Spectra measured for biological replicates of pnit-6_1.5 cultured on VM-Gln. The resonances of Gln and Glu are significantly more intense in these spectra than in **A**.