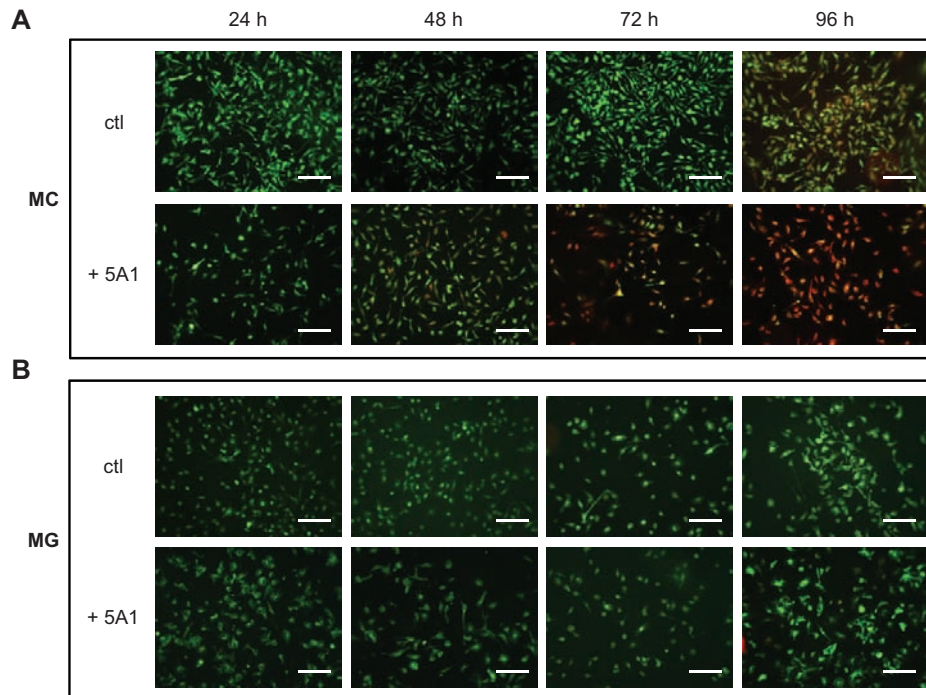


SUPPLEMENTARY FIGURES, TABLES LEGENDS



Supplementary Figure S1: 5A1 induces apoptosis of MC but not MG. MCs **A.** and MG **B.** were treated with 2,5 $\mu\text{g/ml}$ 5A1 and calcein-AM / PI-staining was performed after 24 h, 48 h, 72 h and 96 h of incubation, respectively, for untreated (ctl) and treated (+5A1) cells. Scale bars indicate 0.1 mm. Experiments were performed in triplicates, shown is one representative result.

Supplementary Table S1: Primer Sequences

Gene	fwd	rev
hsCSF-1	GGAGACCTCGTGCCAAATTA	CGCATGGTGTCTCCATTAT
hsCSF-1R	CGACTATAAGAACATCCACCT	CATTTGAAGAAGTGGAGACAG
hsGNB2L1	AACCCTATCATCGTCTCCT	CAATGTGGTTGGTCTTCAG
hsHPRT1	TATGCTGAGGATTTGGAAAGG	CATCTCCTTCATCACATCTCG
hsIL-34	CCCATCCTGGAAGTACCT	CATTCAAGAGGGACAACAC
mmCsf-1	GCGCTTTAAAGACAACACCC	ATGGAAAGTTCGGACACAGG
mmCsf-1r	CACCATCCAATTGTATGTC	CTCAACCACTGTCACCTC
mmGapdh	CATCTTGGGCTACACTGAG	CTGTAGCCGTATTTCATTGTC
mmIl-34	TGGCTTTGGGAAACGAGAAT	CCCTCATAAGGCACAGCAAT
mmTbp	TTCCCAGCTAAGTTCTTAGAC	CCAGGAAATAATTCTGGCTC