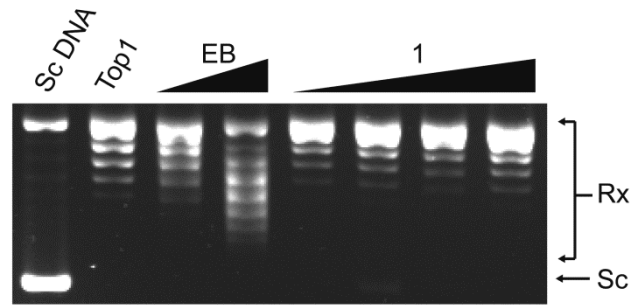
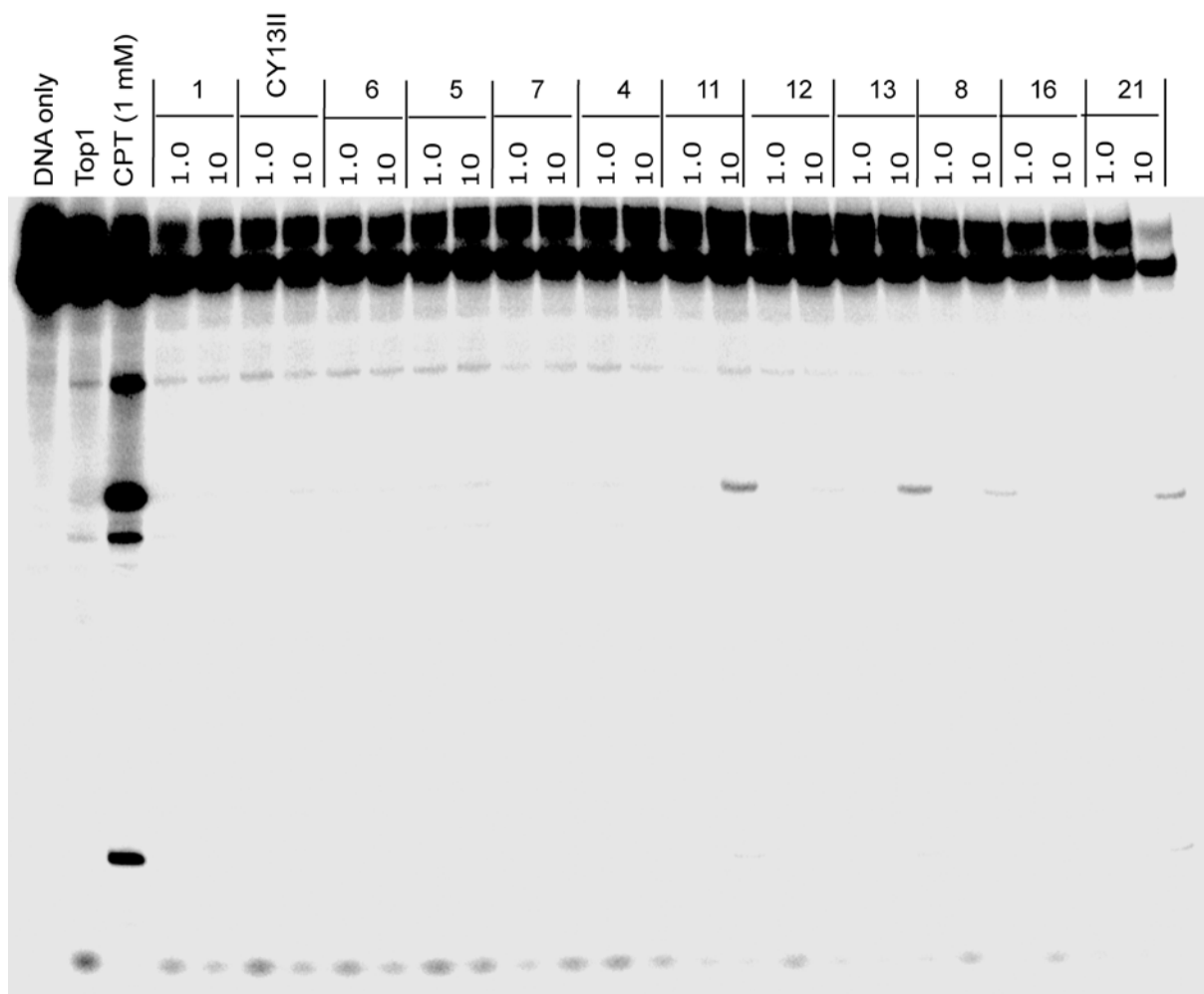


## Supplementary Materials



**Figure 1.** Top1 unwinding effect of compound **1**. Lane 1: DNA alone; Lane 2: DNA and enzyme without drug; Lanes 3-4: DNA and Top1 and EB at 0.4, 0.6  $\mu\text{g/mL}$ , respectively. Lanes 5-8: DNA and Top1 and compound **1** at 5, 10, 25, 50  $\mu\text{M}$ , respectively. Rx, relaxed DNA; Sc, supercoiled DNA.



**Figure 2.** Representative Top1 cleavage assay. Lane 1: DNA alone; Lane 2: DNA and Top1; Lane 3: DNA and Top1 and 1  $\mu$ M CPT; Lanes 4–27: DNA and Top1 and indicated concentration ( $\mu$ M) of tested compounds.