

**FoxM1 Directs STAT3 Expression Essential for Human Endometrial
Stromal Decidualization**

Yaling Jiang, Yixin Liao, Hui He, Qiliang Xin, Zhaowei Tu, Shuangbo Kong,
Tongtong Cui, Bingyan Wang, Song Quan, Bing Li, Shuang Zhang, Haibin
Wang

Supplemental Tables:

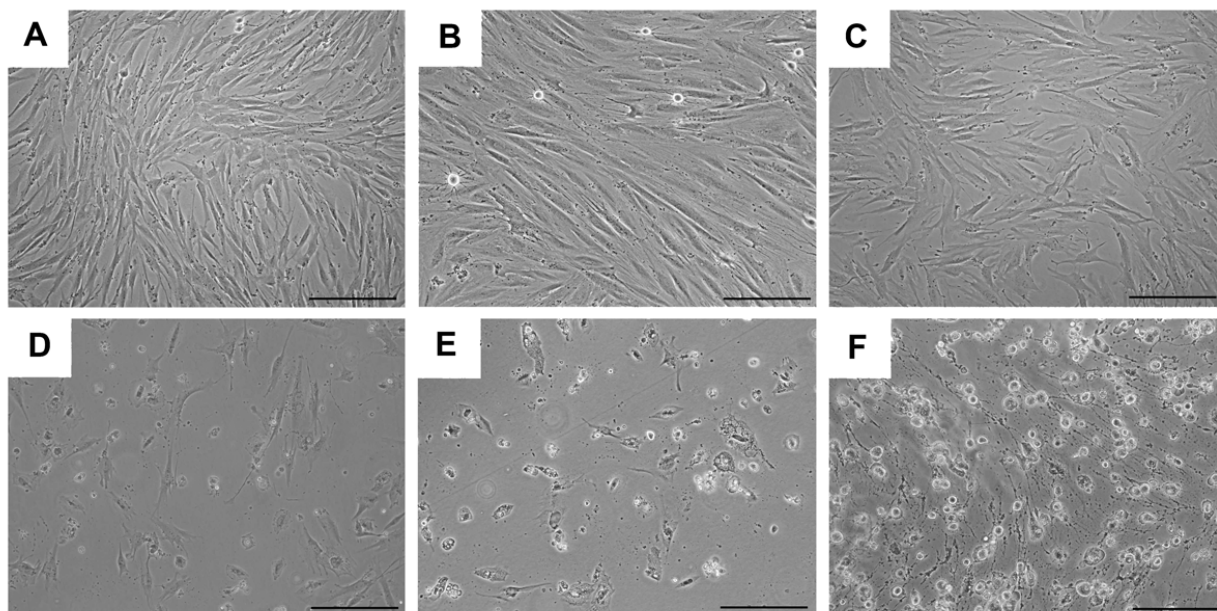
Supplemental Table 1. Primer sequences of target genes.			
Gene	Forward primer	Reverse primer	Length (bps)
q-PCR primer			
FoxM1	GACATCAGCTTTCCTGGCCT	CAGTGGCTAGGGTGTGACTG	248
CyclinB1	TCTGGATAATGGTGAATGGA	GATGTGGCATACTTGTCTT	156
PRL	CTACATCCATAACCTCTCCTCAG	GGGCTTGCTCCTTGCTTC	137
IGFBP-1	AGAGTCGTAGAGAGTTTAGC	ACACTGTCTGCTGTGATAA	108
STAT3	CTCCACTGGTCTATCTCTATC	ACTTGGTCTTCAGGTATGG	126
C/EBP β	AACTCTCTGCTTCTCCCTCTG	TGCGTCAGTCCCGTGAC	113
GAPDH	ATTGGCTACAGCAACAGG	TTGAGCACAGGGTACTTTATT	256
ChIP q-PCR primer			
STAT3 (-962)	TTTGTCTTTATACCTGTTCGTATT	GCATAATGGAGTGATTTCTGT	126
STAT3 (-1069)	TCAAAGGTTAAGAGTCATTGATT	CATGTTCTCTGTTTAGAAAATGC	147
STAT3 (-1494)	ATAGCGTAGTTACAAGAGACT	TGGTGGTGAGAATTGAGAA	165
STAT3 (-1603)	CCTCTCCTATCTGCTATTCAT	AGTCTCTTGTAAGTACGCTAT	159
STAT3 (+9325)	AACCTTCTGGGAAATAACG	CCTAAATTGGGCTTACCTTC	137
Luciferase reporter cloning primer			
STAT3 F1(-755~-1834)	GCAGGGTTTGAATGAATGGAACA	TTTCTTTTCCACCTTGCCTACT	1080
STAT3 F2(+9325~+9580)	AGGAAGAAGCCAGCAGAGCTTGA	TGAGAGGTCAGAATACCACAA	255

Supplemental Table 2. Baseline characteristics of RIF patients and the controls.

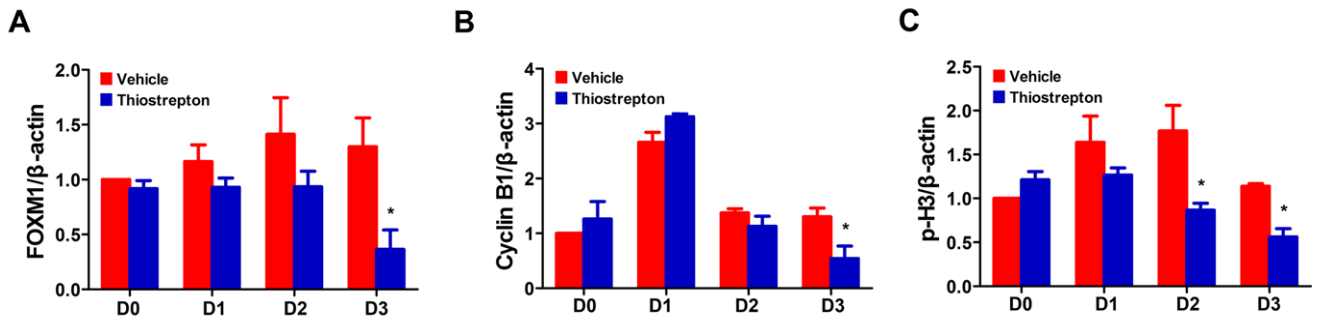
	RIF (n=15)	Control (n=15)	P value
Age	29.93±1.87	30.27±1.83	0.63
Endometrium thickness (mm)	8.58±1.58	9.13±1.81	0.39
FSH (mIU/ml)	2.04±0.23	1.99±0.22	0.59
LH (mIU/ml)	2.08±0.22	2.03±0.37	0.70
E2 (pg/ml)	300.32±24.63	296.69±12.99	0.62
P4 (ng/ml)	22.44±1.91	22.19±2.00	0.73

Data are presented as mean ± SD. FSH, follicles stimulating hormone; LH, luteinizing hormone; E2, oestradiol; P4, progesterone.

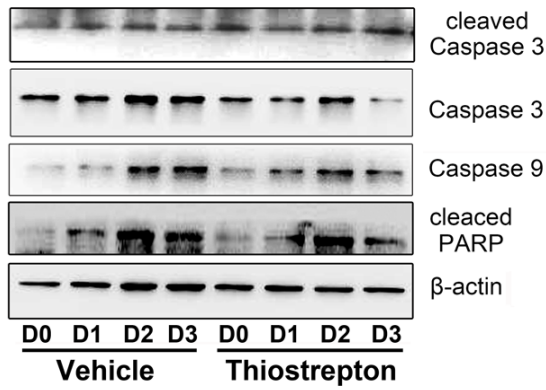
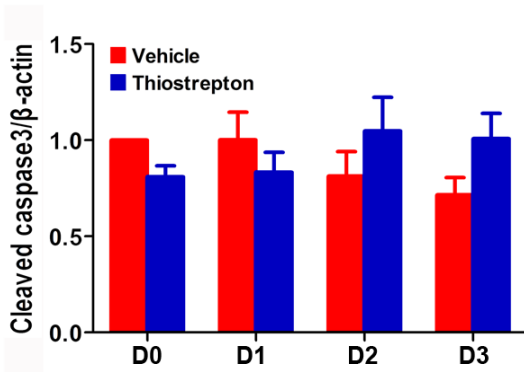
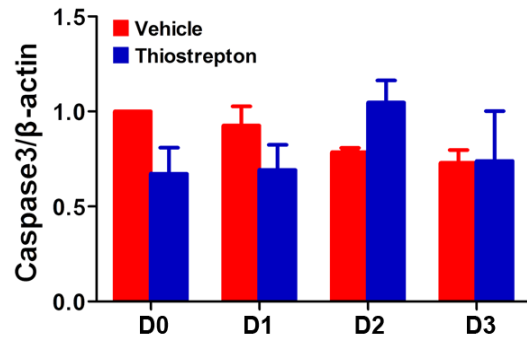
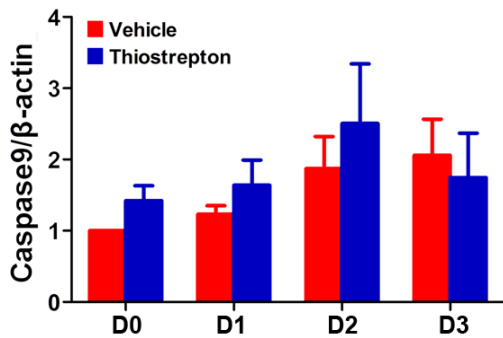
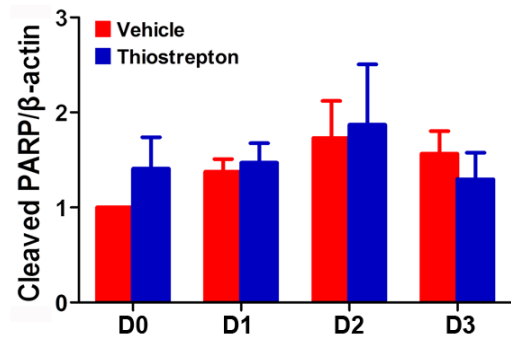
Supplemental Figures



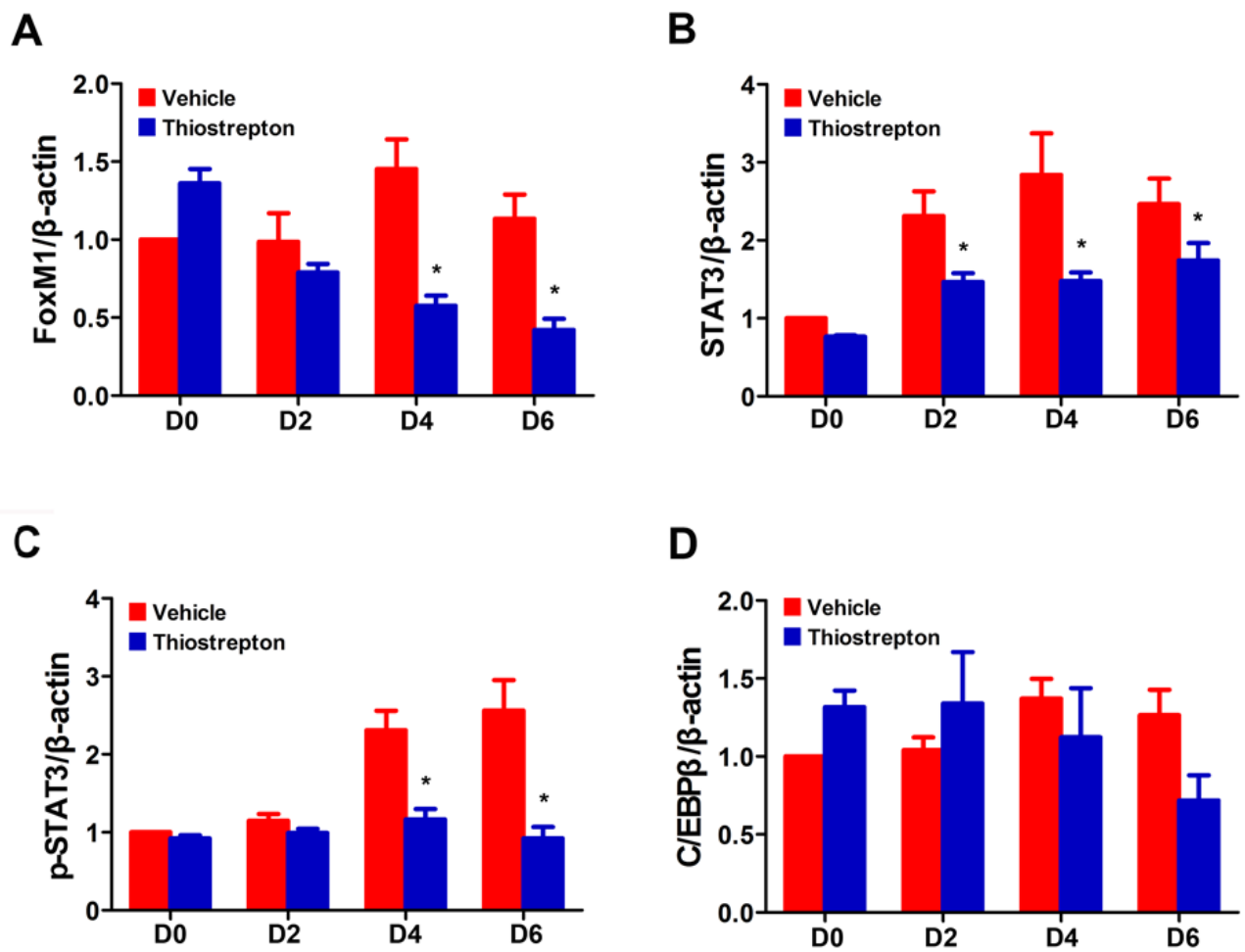
Supplemental Fig. 1 Representative HESCs cultured in proliferative medium treated with vehicle or various doses of thioestrepton for 2 days. A, vehicle; B, 0.5 μM ; C, 1 μM ; D, 2 μM ; E, 3 μM ; F, 5 μM .



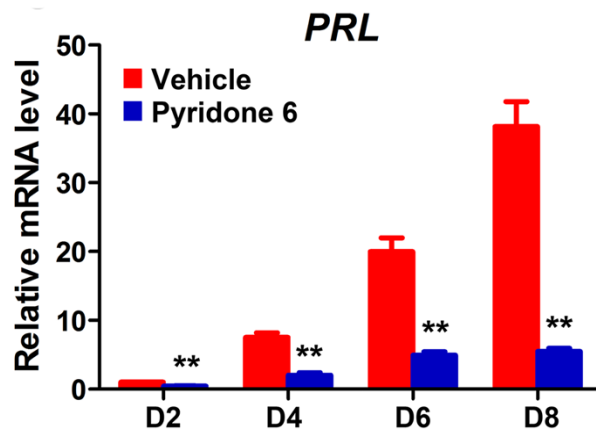
Supplemental Fig. 2 Gray-scales canning of immunoblot bands corresponding to FoxM1, cyclinB1 and p-H3 in Figure 3C. Datashown represent the mean \pm SEM from three independent experiments. *P < 0.05.

A**B****C****D****E**

Supplemental Fig. 3 Western Blot (A) and relative gray-scale scanning analysis of cleaved Caspase3 (B), Caspase3 (C), Caspase9 (D) and cleaved PARP (E) in HESCs treated with vehicle or 1 μ M thiostrepton at days 0-3. Data shown represent the mean \pm SEM from three independent experiments. *P < 0.05.



Supplemental Fig. 4 Gray-scalescanning of immunoblot bands corresponding to FoxM1 (A), STAT3 (B), p-STAT3 (C) and C/EBP β (D) in Figure 5A. Data shown represent the mean \pm SEM from three independent experiments.



Supplemental Fig. 5 PRL mRNA level in differential HESCs treated with vehicle or 1 μ M pyridone 6 at days 2, 4, 6 and 8. The values are normalized to the GAPDH expression level and indicated as the mean \pm SEM. n=3. **P < 0.01.