

Supplemental Data

Galectin-3 Ablation Enhances Liver Steatosis, but Attenuates Inflammation and IL-33-Dependent Fibrosis in Obesogenic Mouse Model of Nonalcoholic Steatohepatitis

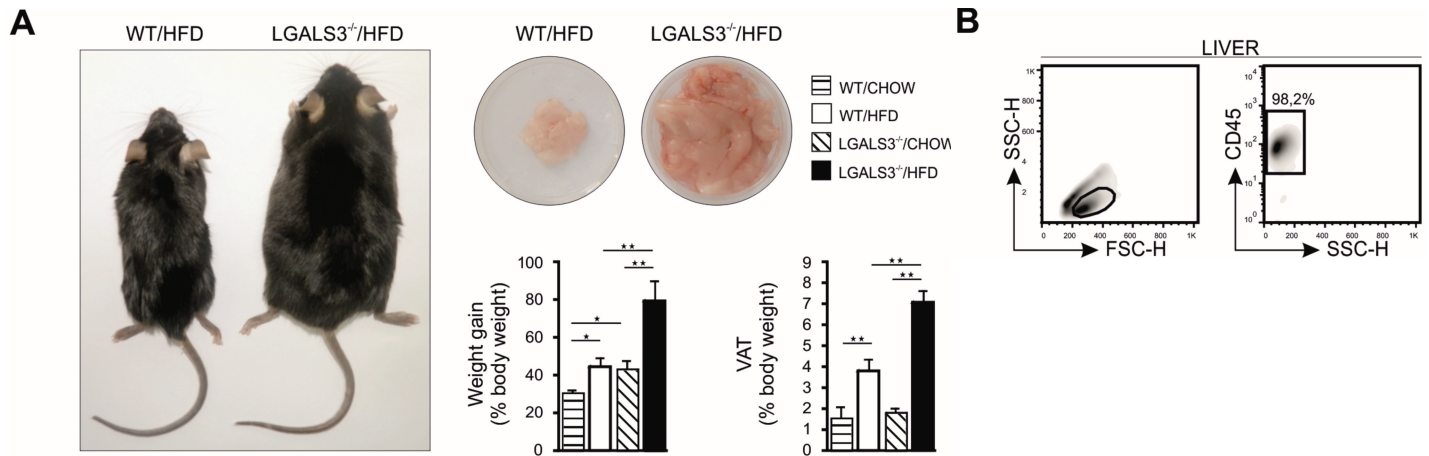
Ilija Jeftic,^{1,2} Nemanja Jovicic,^{1,3} Jelena Pantic,¹ Nebojsa Arsenijevic,¹ Miodrag L Lukic,¹ and Nada Pejnovic^{1,2}

Online address: <http://www.molmed.org>

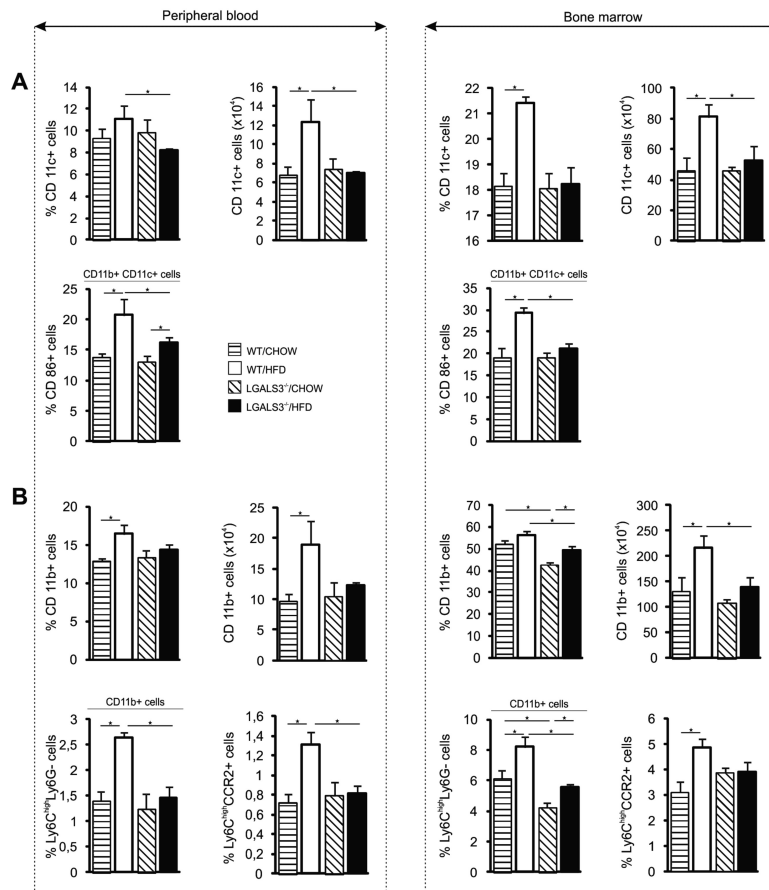
The Feinstein Institute
for Medical Research 
Empowering Imagination. Pioneering Discovery.®

Supplementary Table S1. Primers used for qRT-PCR analysis.

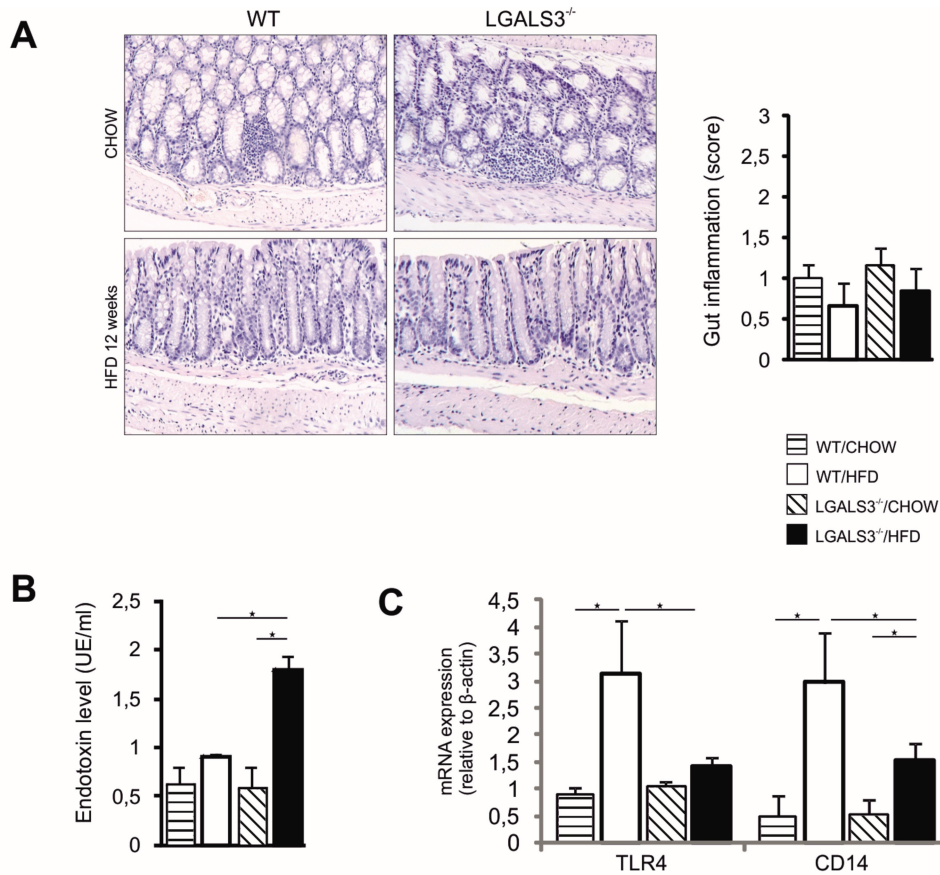
	Sense (5' to 3')	Antisense (5' to 3')
Procol.α1	GCTCCTCTTAGGGGCCACT	CCACGTCTCACCATTGGGG
α-SMA	ACTGGGACGACATGGAAAAG	CATCTCCAGAGTCCAGCAC
CD11c	ATGGAGCCTCAAGACAGGAC	GGATCTGGGATGCTGAAATC
F4/80	TGCATCTAGCAATGGACAGC	GCCTTCTGGATCCATTGAA
CCL2	CAGGTCCCTGTCATGCTTCT	GTCAGCACAGACCTCTCTCT
NLRP3	AGCCTTCCAGGATCCTCTTC	CTTGGGCAGCAGTTTCTTTC
Caspase 1	AGATGGCACATTCCAGGAC	GATCCTCCAGCAGCAACTTC
IL-1β	TCITTGAAGTTGACGGACCC	TGAGTGATACTGCCTGCCTG
IL-6	TCCATCCAGTTGCCCTTCTTG	TTCCACGATTTCCAGAGAAC
TNF-α	CCACATCTCCCTCCAGAAAA	AGGGTCTGGGCCATAGAAT
TLR4	CGCTTTCACCTCTGCCTTCACTACAG	ACACTACCACAATAACCTTCCGGCTC
CD14	AGGGTACAGCTGCAAGGACT	CTTCAGCCCAGTAAAAGACA
Nox2	CGGTGTGCAGTGCTATCATC	GCTCTCCTTCTCAGGGGTT
P22phox	CCTGCSGCGATAGAGTAGGC	TCATGGGGCAGATCGAGT
P47phox	ATGACCTCAATGGCTTCACC	CTATCTGGAGCCCCCTTGACA
P67phox	CTATCAGCTGGTTCCCACGA	GCAGTGGCCTACTTCCAGAG
IL-33	TCCTTGCTTGGCAGTATCCA	TGCTCAATGTGTCAACAGACG
ST2	GCAATTCTGACACTTCCCATG	ACGATTACTGCCCTCCGTA
IL-13	CCTGGCTCTTGCTTGCCTT	GGTCTTGTGTGATGTGCTCA
TGF-β	ATACAGGGCTTTCGATTCAGC	GTCCAGGCTCCAAATATAGG
ChREBP	CTGGGGACCTAAAACAGGAGC	GAAGCCACCCTATAGCTCCC
LXR-α	ATCGCCTTGCTGAAGACCTCTG	GATGGGGTTGATGAACTCCACC
LXR-β	AAGCAGGTGCCAGGGTCT	TGCATTCTGTCTCGTGGTTGT
CREBP-1c	GGAGCCATGGATTGCACATT	GGCCCCGGGAAGTCACTGT
PPAR-γ	CCCAATGGTTGCTGATTACAAA	GAGGGTGTAGAAGGTTCTTCATGA
Abca-1	CGCAGTGACCAGAAAACAATGTG	TATCAATGAGGCAAGGGTGTGG
Cd36	TCCAGCCAATGCCITTTGC	TGGAGATTACTTTTTTCAGTGCAGAA
FAS	AGAGATCCCCGAGACGCTTCT	GCCTGGTAGGCATTCTGTAGT
CPT1	AACCCAGTGCCTTAAACGATG	GAACTGGTGGCCAATGAGAT
DAGT1	ACCGCGAGTTCTACAGAGATTGGT	ACAGCTGCATTGCCATAGTCCCT
DAGT2	AGCTGGTGAAGACACAACC	TGATGATAGCATTGCCACTCC
β-actin	AGCTGCGTTTTACACCCITT	AAGCCATGCCAATGTTGTCT



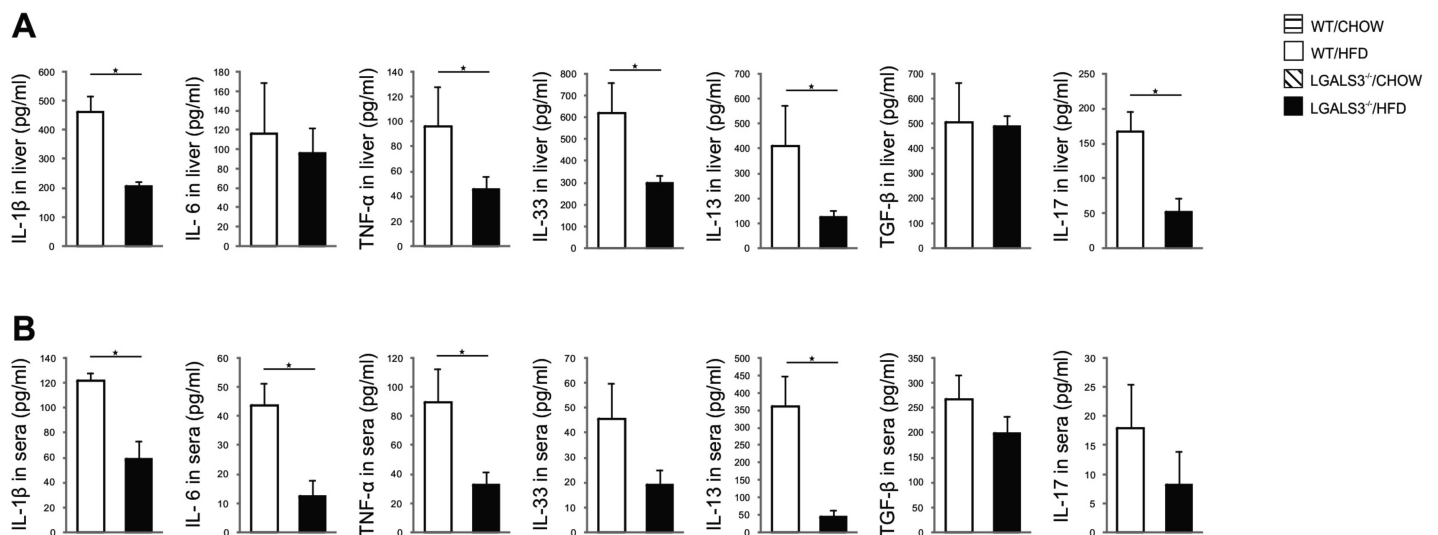
Supplementary Figure S1. Galectin-3 ablation accelerated HFD-induced obesity. (A) Representative images of WT and LGALS3^{-/-} mice after 24 wks on HFD. Representative image of the larger body size of LGALS3^{-/-} vs. WT mice. Representative image of the amount of VAT in WT and LGALS3^{-/-} mice. Weight gain (% body weight) and VAT (% body weight). The results are shown as the means ± SEM (n=5-6 mice/group/ experiment), *P < 0.05, **P < 0.01. The results are representative of two experiments. (B) Gating region in flow cytometry analysis. Representative flow cytometric plots of gating region used to analyze liver CD45⁺ mononuclear cells.



Supplementary Figure S2. Decreased number of mature dendritic cells and proinflammatory monocytes in peripheral blood and bone marrow in Gal-3 deficient mice on HFD. Peripheral blood and bone marrow cells were analyzed in WT and LGALS3^{-/-} mice on HFD or standard diet for 12 wks. (A) Lower proportions and number of CD11c⁺ DCs and mature myeloid DCs in peripheral blood and bone marrow of LGALS3^{-/-} mice on HFD. (B) Lower proportions of proinflammatory monocytes in peripheral blood and bone marrow of LGALS3^{-/-} mice on HFD. The results are shown as the means ± SEM (n=5-6 mice/group/experiment) *P < 0.05, **P < 0.01.



Supplementary Figure S3. Gut inflammation and systemic endotoxin levels. Gut inflammation and endotoxin levels were analyzed in WT and LGALS3^{-/-} mice on HFD or standard diet for 12 wks. (A) H&E staining (x40). Grading of gut inflammation. (B) Plasma endotoxin levels (UE/ml) (C) Hepatic mRNA expression of TLR-4 and CD14 in WT and LGALS3^{-/-} mice on HFD or standard diet for 24 wks. The results are shown as the means \pm SEM (n=5-6 mice/group/experiment) *P < 0.05.



Supplementary Figure S4. Proinflammatory and profibrogenic cytokines. Cytokines were analyzed in WT and LGALS3^{-/-} mice on HFD or standard diet for 24 wks. (A) Cytokine levels in the liver homogenates. (B) Cytokine levels in sera. The results are shown as the means \pm SEM (n=5-6 mice/ group/ experiment), *P < 0.05, **P < 0.01. The results are representative of two experiments.