

Fig. S1

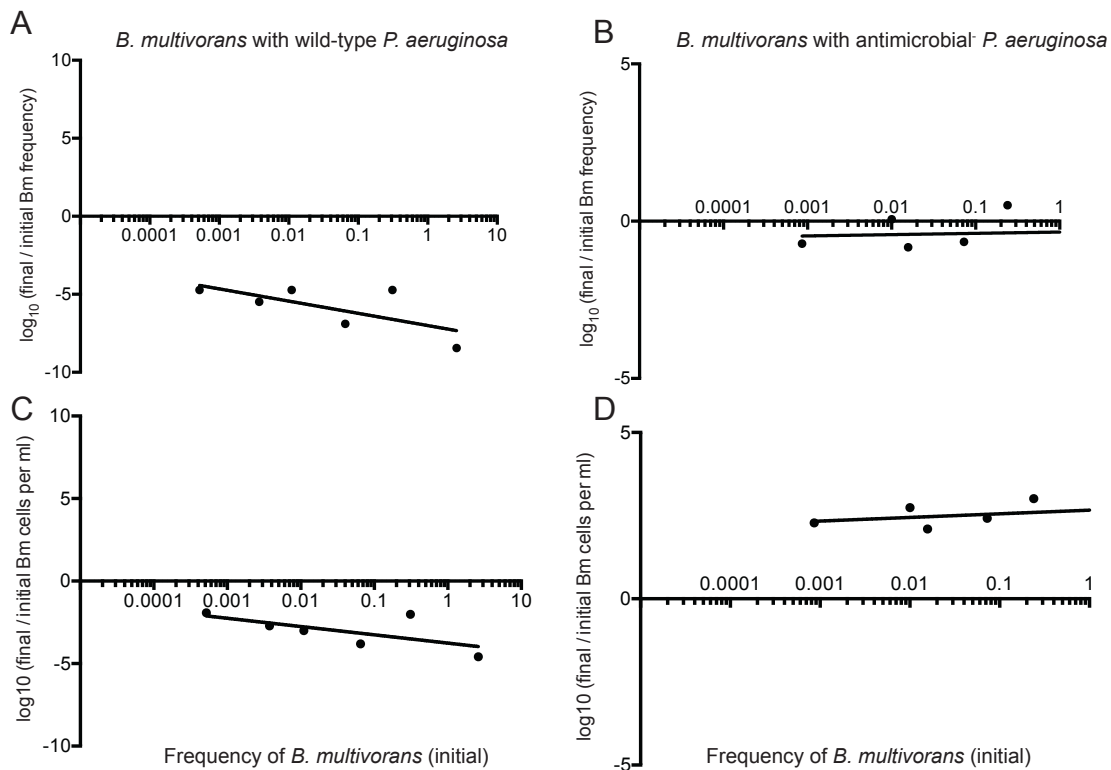


Fig. S1. Competitions in Luria-Bertani medium. Wild-type *B. multivorans* inoculated at varying frequency with either *P. aeruginosa* wild type (A, C) or the antimicrobial-defective (*hcnC*, *phzA1*, *rhIB*) mutant (B, D). In A and B, the data are plotted as the frequency of *B. multivorans* relative to *P. aeruginosa* (log<sub>10</sub> final/initial frequency). In C and D, the same data are plotted as the fitness of *B. multivorans* alone (log<sub>10</sub> final/initial CFU). The solid lines indicate a nonlinear regression fit using an ordinary fit model.