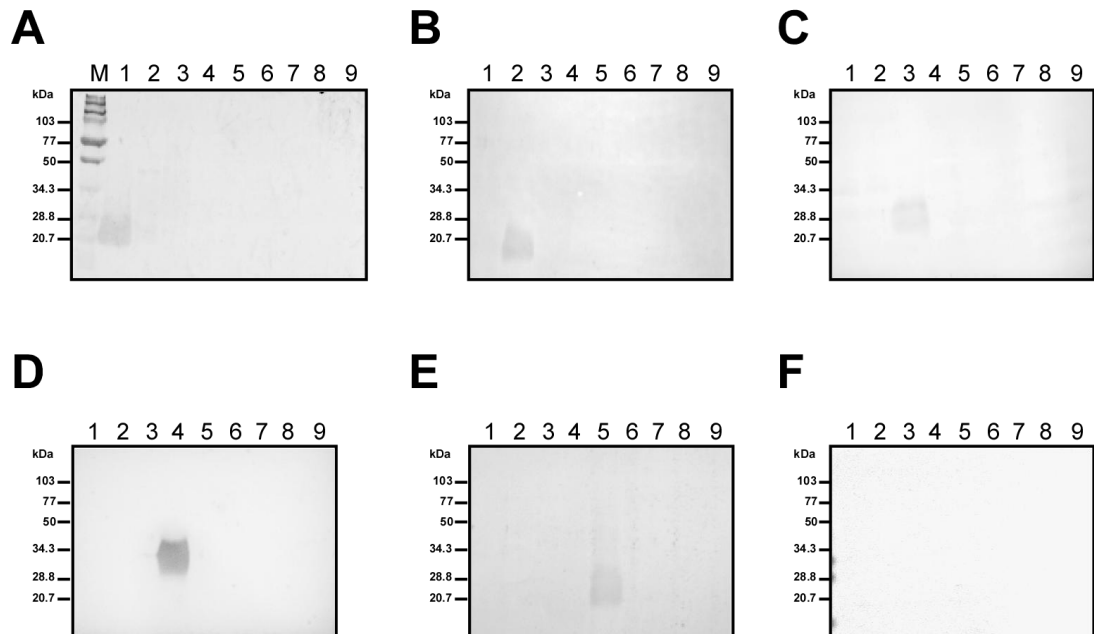


S2 Fig: Serogroup specific reactivity of extracted LPS



The extracted LPS from Autumnalis (Lane 1), Australis (Lane 2), Ballum (Lane 3), Grippityphosa (Lane 4), Pomona (Lane 5), Andamana (Lane 6), *E. coli* (Lane 7), *Serratia marcescens* (Lane 8), and *Citrobacter freundii* (Lane 9) were separated on SDS PAGE and probed with homologous sera specific for Autumnalis (**A**), Australis (**B**), Ballum (**C**), Grippityphosa (**D**), Pomona (**E**), and seronegative healthy controls (**F**). Lane M- BioRad low range molecular weight protein marker.