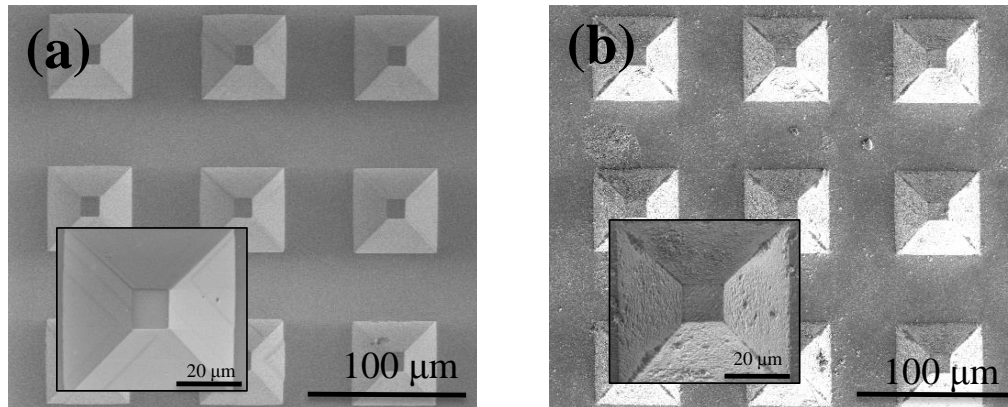
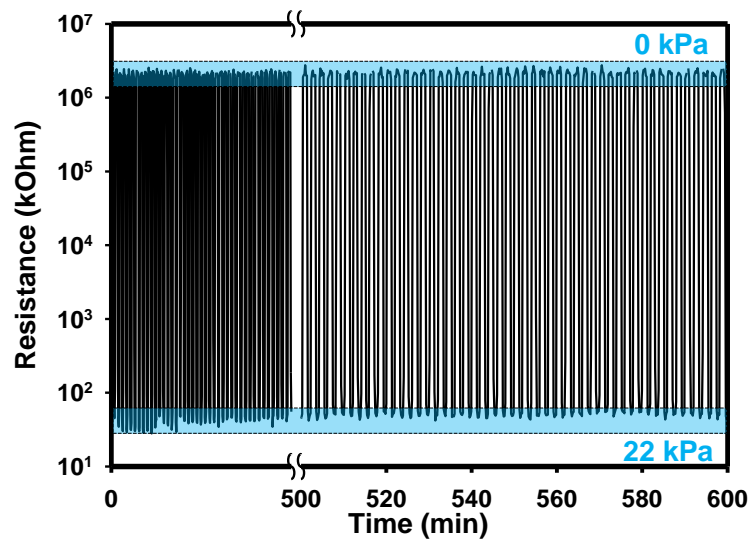


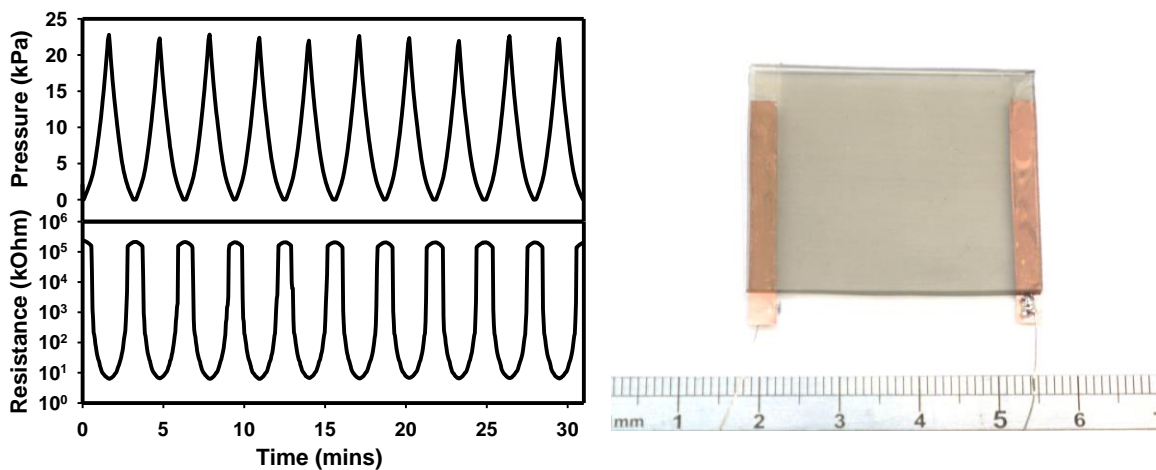
Supplementary Information



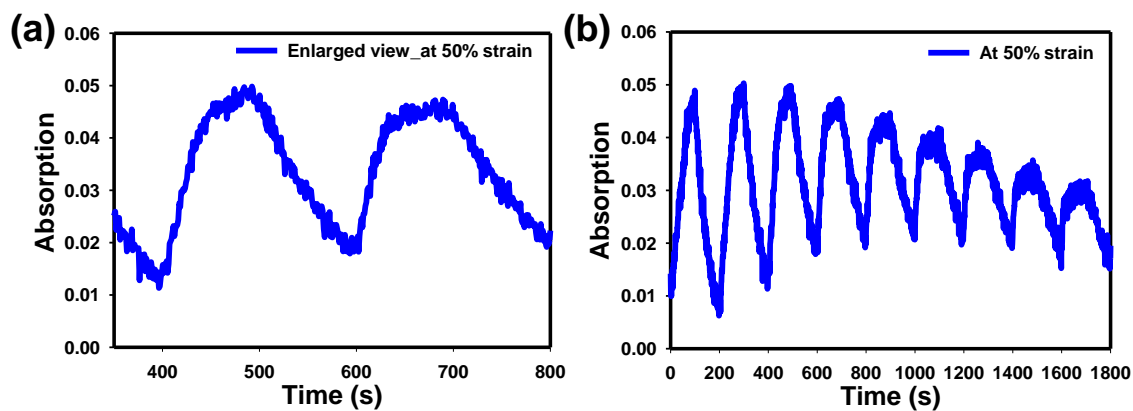
Supplementary Figure 1. The SEM images of the pressure sensor. (a) The SEM image of the pre-prepared pyramidal microstructured PDMS substrate. (b) The SEM image of the SWNT spray-coated pyramidal microstructured PDMS substrate.



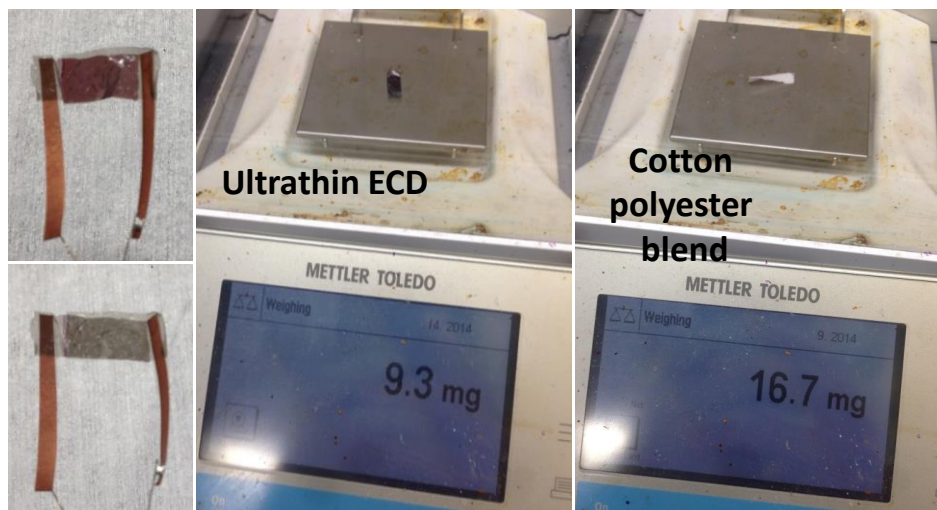
Supplementary Figure 2. The multiple cyclic data of PS-10. The resistance of the pressure sensor remained consistent at both 0 kPa ($\sim 2 \times 10^6$ kOhm) and 22 kPa (~ 50 kOhm) after over 300 cycles. Each cycle takes about 2 minutes.



Supplementary Figure 3. The characteristic and photo of the $3 \times 3 \text{ cm}^2$ pressure sensor. The resistance response of the large area pressure sensor and its photo with proportional scale.



Supplementary Figure 4. The properties of the transranet and stretchable polymer-based electrochromic devices. (a) The enlarged spectra of a single switching cycle at 50% strain. (b) The cyclic switching at 50% strain.



Supplementary Figure 5. The ultrathin ECDs and the weight of the ECD and a piece of cotton polyester. The size of the conventional textile is similar to that of ultrathin ECDs.