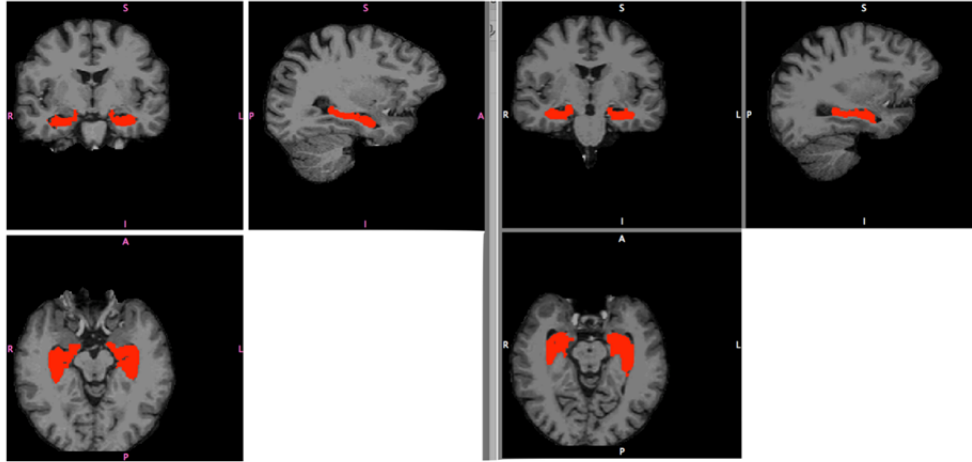


Structural Plasticity of the Hippocampus and Amygdala Induced by Electroconvulsive Therapy in Major Depression

Supplemental Information



Patient at T1 (pre ECT):
Left volume: 2367 mm³,
Right volume: 2505 mm³

Patient at T3 (post ECT):
Left volume: 2609 mm³,
Right volume: 2685 mm³

Figure S1. Hippocampal segmentations for both hemispheres overlaid on the T1 image for a representative patient before and after undergoing electroconvulsive therapy (ECT).