

SUPPLEMENTAL MATERIAL

ANGIOTENSIN-(1-7) ADMINISTRATION BENEFITS CARDIAC, RENAL, AND PROGENITOR CELL FUNCTION IN *db/db* MICE

Anna M. Papinska*, Nicholas M. Mordwinkin*, Christopher J. Meeks, Sachin S. Jadhav, and Kathleen E. Rodgers

University of Southern California
School of Pharmacy

Abbreviated title: ANGIOTENSIN-(1-7) AND DIABETIC COMPLICATIONS

Correspondence to:
Kathleen E. Rodgers
University of Southern California
1985 Zonal Ave., PSC 530
Los Angeles, CA 90033, USA
Tel: 323-442-2574
Email: krodgers@pharmacy.usc.edu

*These authors contributed equally to the paper.

Supplemental Figures

Figure I

Effects of Ang-(1-7) on cardiomyocyte hypertrophy. Representative images of heart sections stained with hematoxylin and eosin showing cardiomyocyte size.

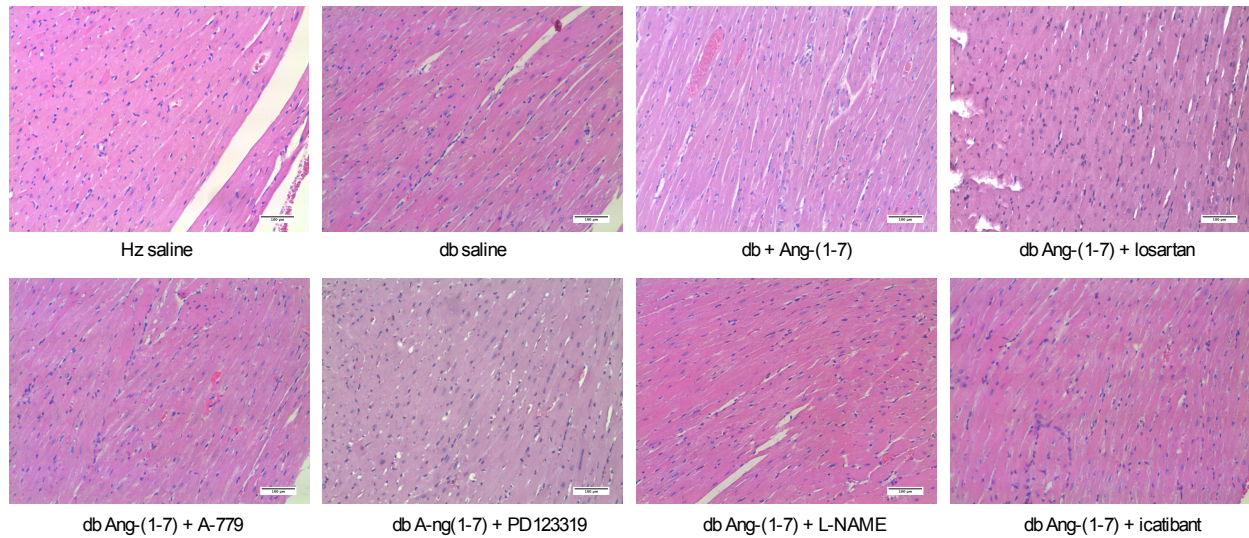


Figure II

Effects of Ang-(1-7) on glomerular hypertrophy and mesangial expansion. Representative pictures of kidney sections at 40x stained with periodic acid Schiff stain.

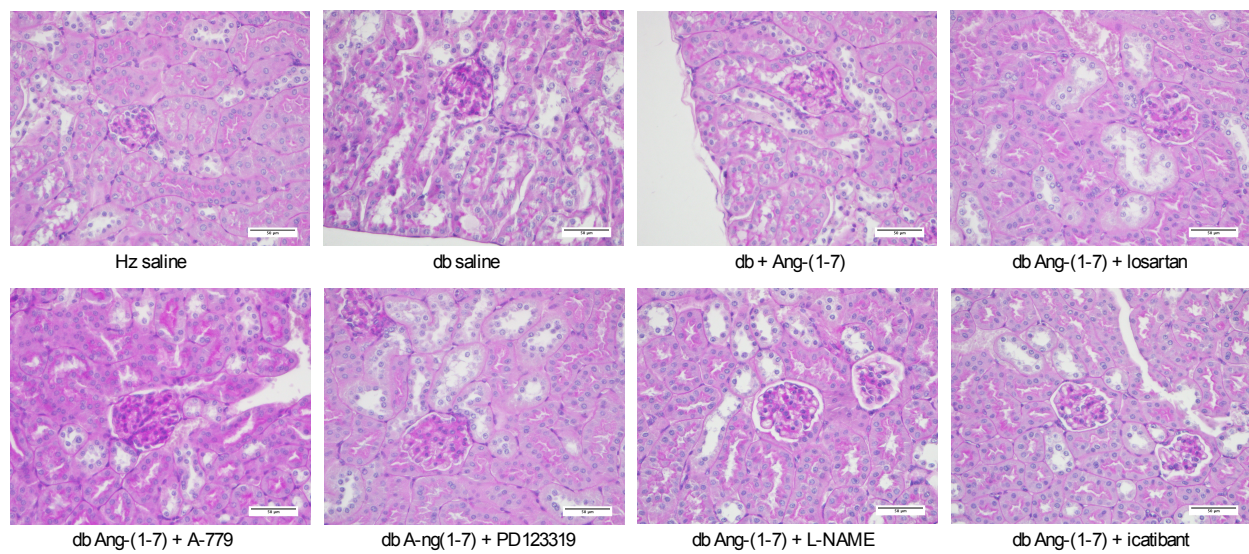


Figure III

Phosphorylation of eNOS and formation of nitrotyrosine in the kidneys. Representative images of kidney sections at 40x stained for nitrotyrosine, phospho-eNOS Ser1177 and phospho-eNOS Thr495. Sections were stained using immunohistochemistry.

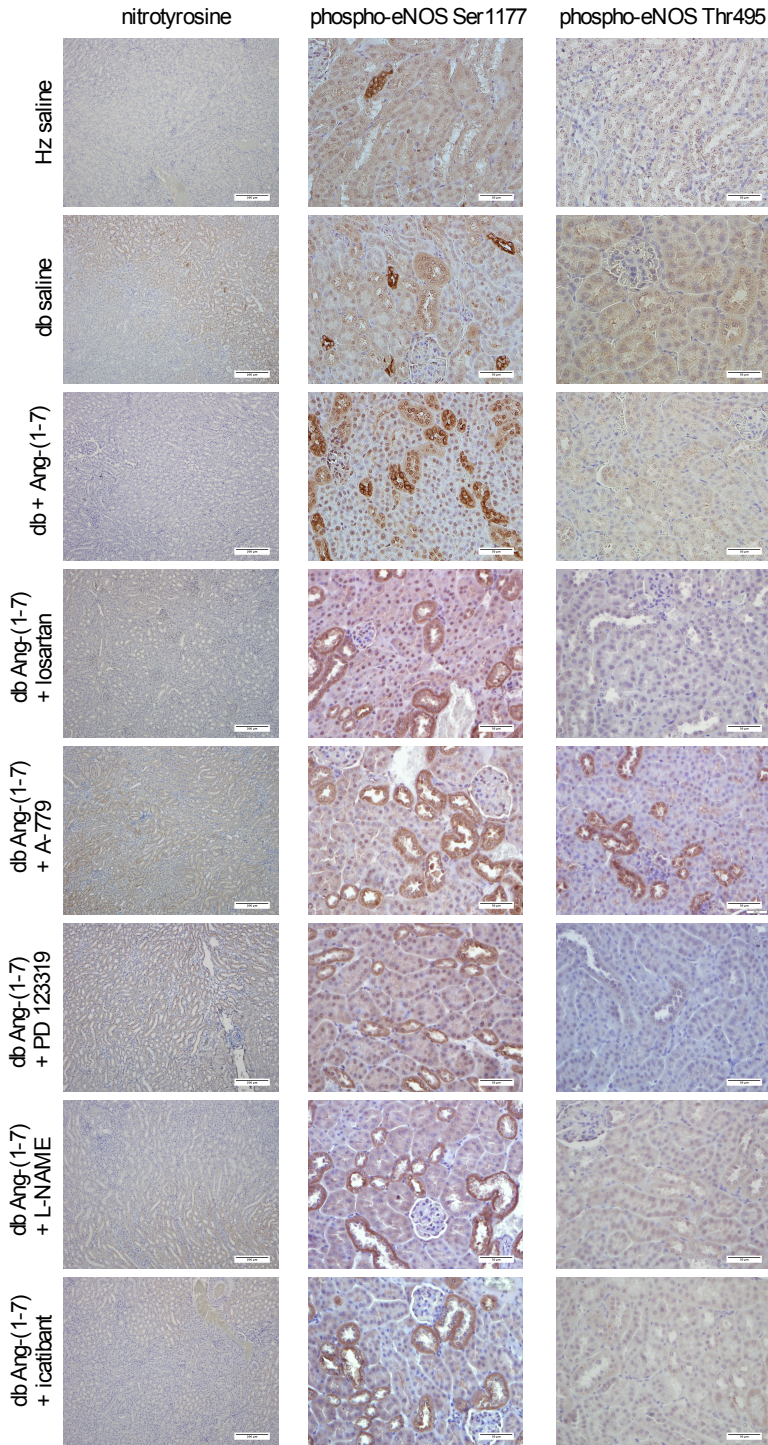


Figure IV

Effects of inhibitors on bone marrow EPC in diabetic animals.

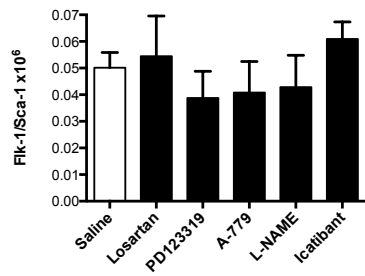


Figure V

EPC flow cytometry analysis. Representative images of flow cytometry analysis of circulating EPC.

