

Supplementary Information:

High-throughput sequencing and morphology perform equally well for benthic monitoring of marine ecosystems

Franck Lejzerowicz¹, Philippe Esling^{1,2}, Loïc Pillet^{1,3}, Thomas A. Wilding⁴,
Kenneth D. Black⁴, Jan Pawlowski¹

¹ Department of Genetics and Evolution, University of Geneva, Switzerland

² IRCAM, UMR 9912, Université Pierre et Marie Curie, Paris, France

³ ADMM UMR 7144, CNRS, Station Biologique de Roscoff, 29682 Roscoff, France

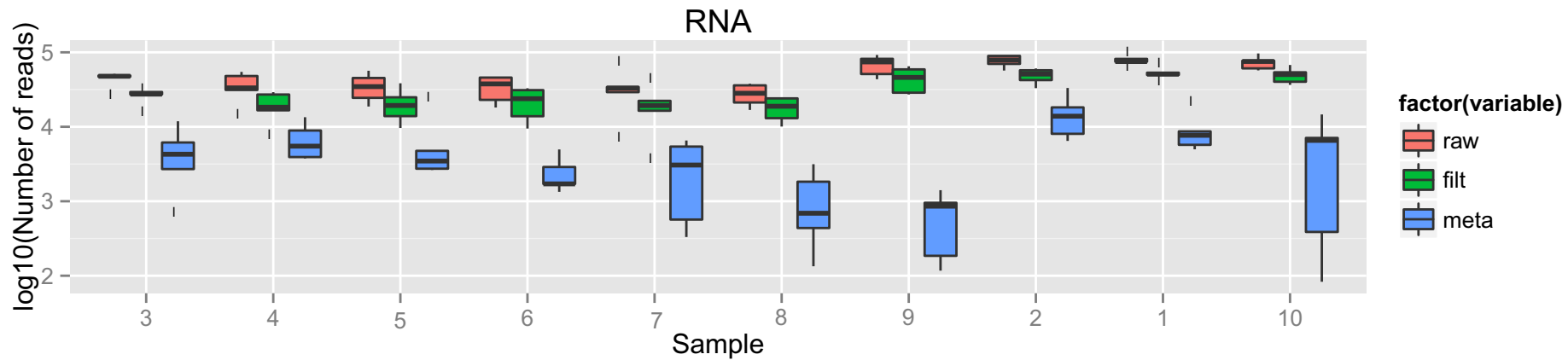
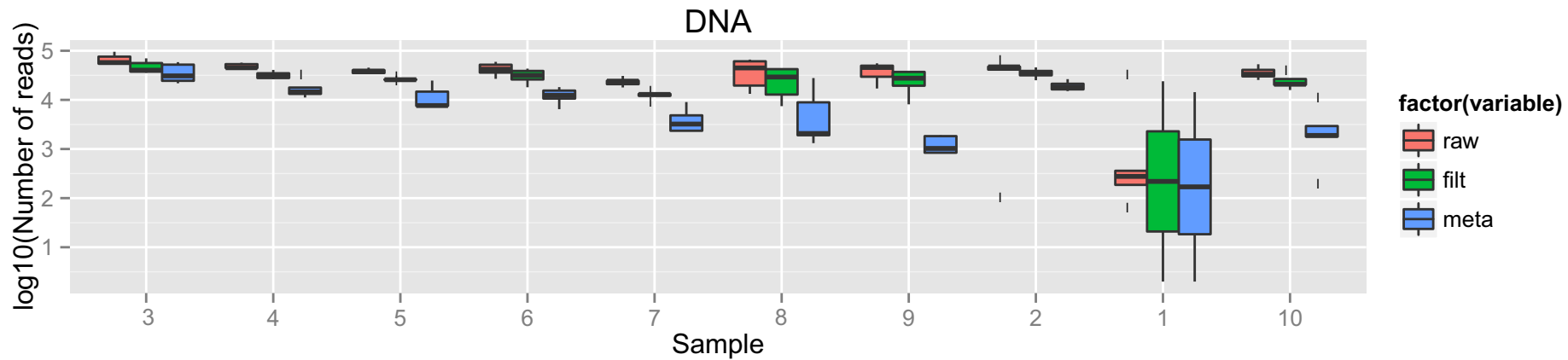
⁴ SAMS, Scottish Marine Institute, Oban, Argyll, UK

* To whom correspondence should be addressed. Tel: +41223793077; Fax:
+41223793340; Email: franck.lejzerowicz@unige.ch

Present Address: [Franck Lejzerowicz], Department of Genetics and Evolution,
University of Geneva, Sciences 3, 30, Quai Ernest Ansermet, CH-1211 Geneva 4,
Switzerland

Short title: High-throughput sequencing for benthic monitoring

Supplementary Figure 1. Sequence reads filtering. The log₁₀-transformed numbers of DNA (upper panel) and RNA (lower panel) sequence reads are shown after sequencing (raw), after the quality-filtering²³ and de-multiplexing²⁹ as (filt) and after selection of Metazoan sequences (meta). Each boxplot represents a maximum of 5 samples for each of the 10 stations

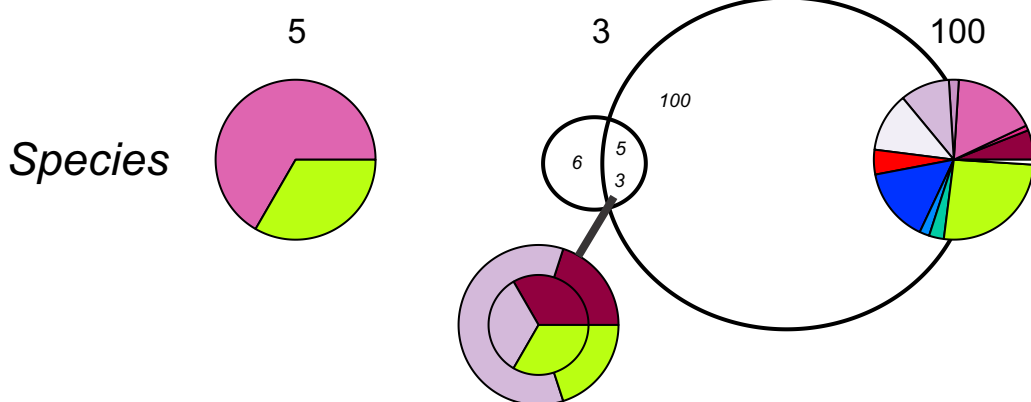
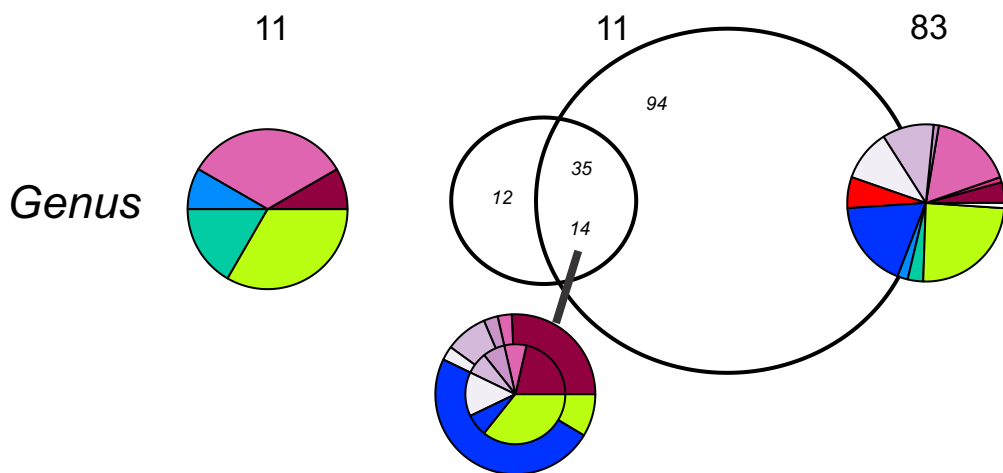
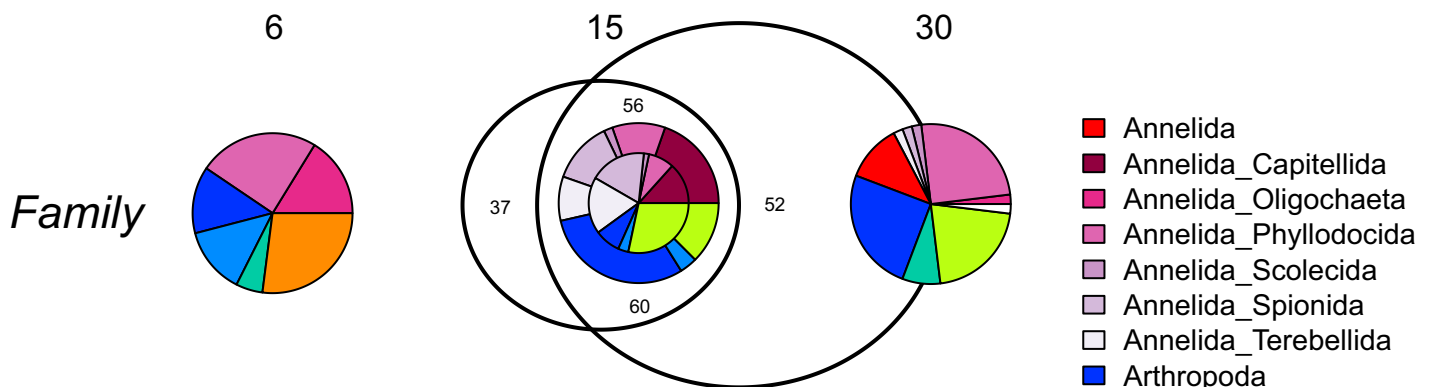
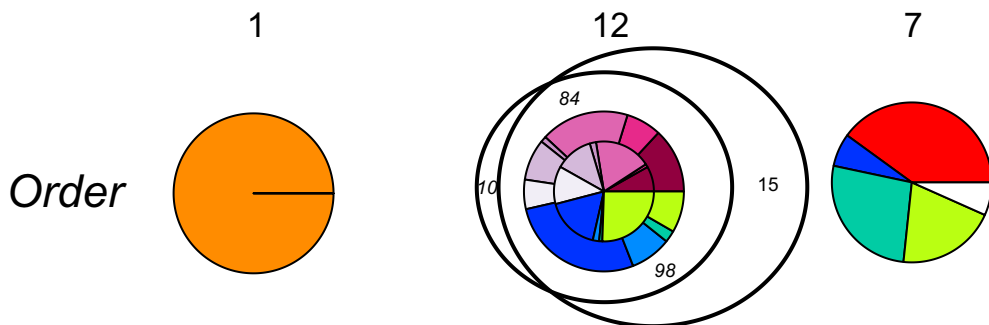
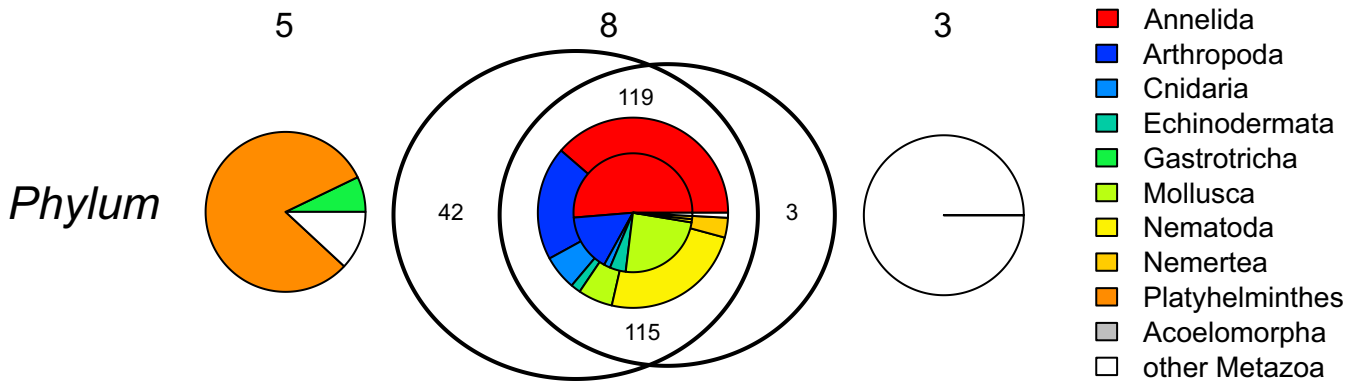


Supplementary Figure 2: Comparison of the diversity detected by the molecular and morphotaxonomic approaches at each assigned taxonomic level. The taxa to which the OTUs/species could be assigned are either found in both the molecular and morphological dataset (“Both”), in the molecular dataset only (“Molecular”) or in the morphological dataset only (“Morphological”). For each of these fractions, a pie chart represents the proportions of taxa in terms of OTU (for the molecular approach) or species (for the morphotaxonomic approach). For the “Both” fraction, the outer chart represents the molecular data and the inner chart represents the morphotaxonomic data. The numbers inside the circles correspond to the numbers of assigned OTU/species while the numbers outside the circles indicate the number of taxa that could have been assigned the taxonomic level under consideration.

Molecular

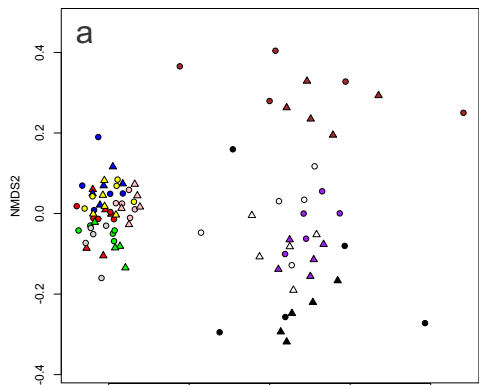
Both

Morphology

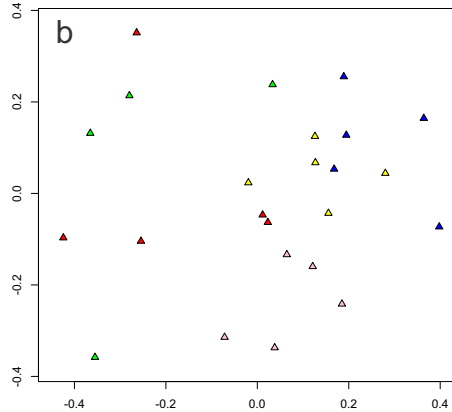


Supplementary Figure 3: Non-metric multidimensional scaling plots. The plots are presented with all the biological replicate samples (a, d), only the DNA replicates of the impacted stations (b, e) or only the RNA replicates of the impacted stations (c, f). All sample distances are computed using the Jaccard dissimilarity index and based either on OTU presence/absence data (upper panels) or normalized OTU sequence abundance data (lower panels).

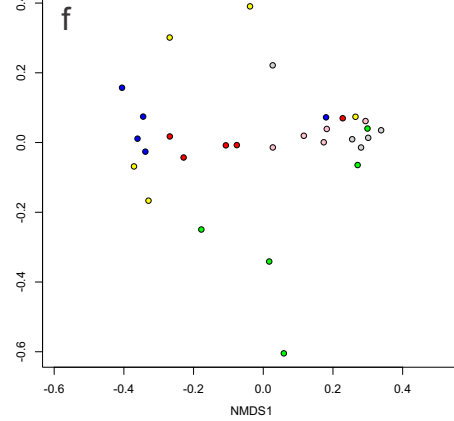
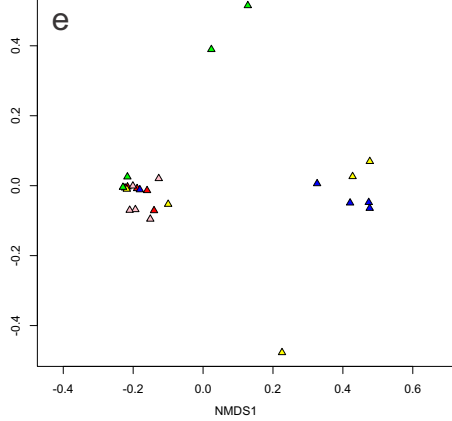
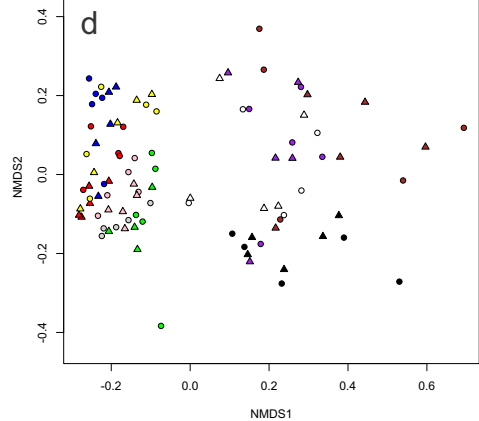
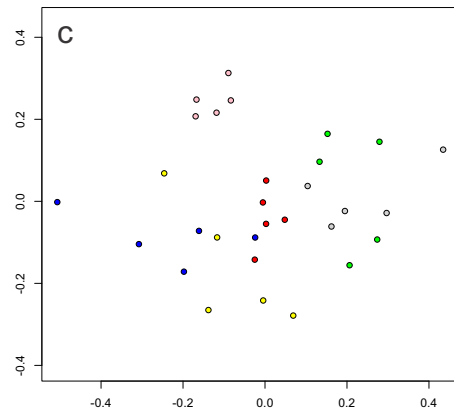
All samples



DNA impacted samples



RNA impacted samples



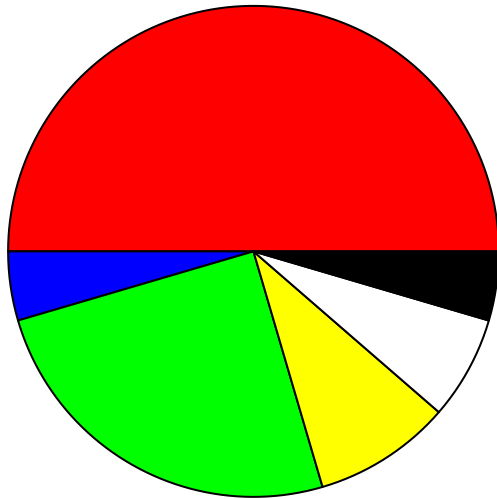
Presence / absence

Sequence abundance

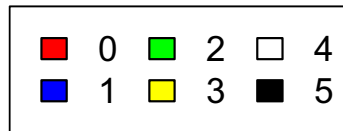


Supplementary Figure 4: Proportions of taxa associated with the different ecological groups used for the computation of the biotic indices. The taxa assigned using HTS (“Molecular”, left chart) and assigned in the morphotaxonomic inventory (“Morphology”, right chart) are associated with the total number of species (below numbers).

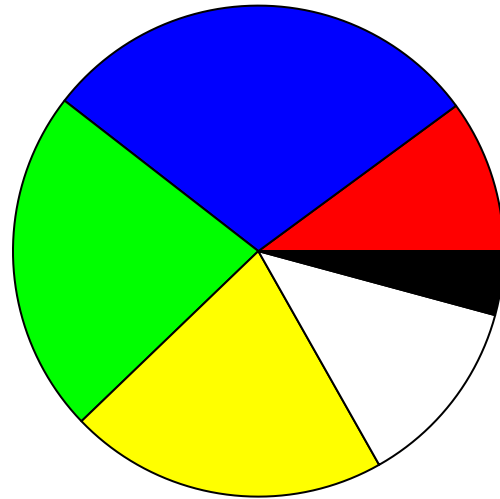
Molecular



44



Morphological



119

Supplementary Table 1. Sampling sites and metadata

Station	Date	LatDeg	LatMin	LonDeg	LonMin	Depth	Redox	Distance (m)
1	5/25/13	56	30.095	5	30.008	29.1	83	0
2	5/25/13	56	30.091	5	30.016	27.9	153	11
3	5/25/13	56	30.088	5	30.03	26.7	183	26
4	5/25/13	56	30.082	5	30.036	26.9	44	40
5	5/25/13	56	30.079	5	30.037	26.5	-2	50
6	5/25/13	56	30.077	5	30.055	26.1	-5	60
7	5/25/13	56	29.982	5	30.171	27	92	270
8	5/25/13	56	29.95	5	30.206	28.9	69	340
9	5/25/13	56	29.992	5	30.236	29.2	107	400
10	5/25/13	56	30.06	5	29.969	33.4	87	76

Supplementary Table 2. Tag-to-sample information and tagged primer sequences.

Molecule	Sample	Replicate	Forward	Reverse	Molecule	Sample	Replicate	Forward	Reverse
RNA	1	1	V4F-K	V4R-H	DNA	1	1	V4F-X	V4R-O
		2	V4F-K	V4R-T			2	V4F-X	V4R-U
		3	V4F-K	V4R-X			3	V4F-Y	V4R-H
		4	V4F-L	V4R-A			4	V4F-Y	V4R-L
		5	V4F-L	V4R-E			5	V4F-Y	V4R-N
	2	1	V4F-I	V4R-V		2	1	V4F-W	V4R-J
		2	V4F-J	V4R-A			2	V4F-W	V4R-N
		3	V4F-J	V4R-H			3	V4F-W	V4R-U
		4	V4F-J	V4R-W			4	V4F-X	V4R-G
		5	V4F-K	V4R-B			5	V4F-X	V4R-K
	3	1	V4F-A	V4R-J		3	1	V4F-N	V4R-A
		2	V4F-A	V4R-L			2	V4F-N	V4R-F
		3	V4F-A	V4R-N			3	V4F-N	V4R-W
		4	V4F-A	V4R-S			4	V4F-N	V4R-Y
		5	V4F-B	V4R-G			5	V4F-O	V4R-A
	4	1	V4F-B	V4R-K		4	1	V4F-O	V4R-B
		2	V4F-B	V4R-N			2	V4F-O	V4R-T
		3	V4F-B	V4R-O			3	V4F-O	V4R-X
		4	V4F-C	V4R-B			4	V4F-P	V4R-C
		5	V4F-C	V4R-G			5	V4F-P	V4R-I
	5	1	V4F-C	V4R-P		5	1	V4F-P	V4R-T
		2	V4F-C	V4R-V			2	V4F-Q	V4R-D
		3	V4F-D	V4R-I			3	V4F-Q	V4R-V
		4	V4F-D	V4R-M			4	V4F-Q	V4R-Z
5		V4F-D	V4R-Q	5	V4F-R		V4R-B		
6	1	V4F-D	V4R-W	6	1	V4F-R	V4R-E		
	2	V4F-E	V4R-I		2	V4F-R	V4R-V		
	3	V4F-E	V4R-L		3	V4F-R	V4R-Y		
	4	V4F-E	V4R-O		4	V4F-S	V4R-F		

		5	V4F-E	V4R-R			5	V4F-S	V4R-M
7		1	V4F-F	V4R-C	7		1	V4F-S	V4R-P
		2	V4F-F	V4R-D			2	V4F-S	V4R-Q
		3	V4F-F	V4R-S			3	V4F-T	V4R-G
		4	V4F-F	V4R-Z			4	V4F-T	V4R-K
		5	V4F-G	V4R-F			5	V4F-T	V4R-S
8		1	V4F-G	V4R-M	8		1	V4F-T	V4R-Z
		2	V4F-G	V4R-T			2	V4F-U	V4R-H
		3	V4F-G	V4R-X			3	V4F-U	V4R-L
		4	V4F-H	V4R-J			4	V4F-U	V4R-W
		5	V4F-H	V4R-K			5	V4F-U	V4R-X
9		1	V4F-H	V4R-U	9		1	V4F-V	V4R-C
		2	V4F-H	V4R-Y			2	V4F-V	V4R-I
		3	V4F-I	V4R-D			3	V4F-V	V4R-Q
		4	V4F-I	V4R-E			4	V4F-V	V4R-R
		5	V4F-I	V4R-P			5	V4F-W	V4R-D
10		1	V4F-L	V4R-U	10		1	V4F-Y	V4R-R
		2	V4F-L	V4R-Y			2	V4F-Z	V4R-E
		3	V4F-M	V4R-C			3	V4F-Z	V4R-M
		4	V4F-M	V4R-F			4	V4F-Z	V4R-P
		5	V4F-M	V4R-Z			5	V4F-Z	V4R-S

Forward primer sequences (5'-3')

V4F-A	ACACACACCCAGCASCYGCGGTAATTCC
V4F-B	ACGACTCTCCAGCASCYGCGGTAATTCC
V4F-C	ACGCTAGTCCAGCASCYGCGGTAATTCC
V4F-D	ACTATCATCCAGCASCYGCGGTAATTCC
V4F-E	ACTGCTGACCAGCASCYGCGGTAATTCC
V4F-F	AGACATCTCCAGCASCYGCGGTAATTCC
V4F-G	AGTCTACACCAGCASCYGCGGTAATTCC
V4F-H	CAGATCACCCAGCASCYGCGGTAATTCC
V4F-I	CATACTGCCAGCASCYGCGGTAATTCC
V4F-J	CATATACTCCAGCASCYGCGGTAATTCC
V4F-K	CATCATATCCAGCASCYGCGGTAATTCC
V4F-L	CGACTCATCCAGCASCYGCGGTAATTCC
V4F-M	CGAGACGCCAGCASCYGCGGTAATTCC
V4F-N	CGAGCACACCAGCASCYGCGGTAATTCC
V4F-O	CGTATCGACCAGCASCYGCGGTAATTCC
V4F-P	TAGACAGTCCAGCASCYGCGGTAATTCC
V4F-Q	TAGCACGACCAGCASCYGCGGTAATTCC
V4F-R	TATGACACCCAGCASCYGCGGTAATTCC
V4F-S	TATGTAGACCAGCASCYGCGGTAATTCC
V4F-T	TCAGTACCCAGCASCYGCGGTAATTCC
V4F-U	TCAGTCGTCCAGCASCYGCGGTAATTCC
V4F-V	TCGATACACCAGCASCYGCGGTAATTCC
V4F-W	TCTCATCACCAGCASCYGCGGTAATTCC
V4F-X	TCTGCACTCCAGCASCYGCGGTAATTCC
V4F-Y	TGACTAGCCCAGCASCYGCGGTAATTCC
V4F-Z	TGTGATGTCCAGCASCYGCGGTAATTCC

Reverse primer sequences (5'-3')

V4R-A	CAGAGACGACTTTCGTTCTTGATYRA
V4R-B	CAGATGACACTTTCGTTCTTGATYRA
V4R-C	CAGTATGCACTTTCGTTCTTGATYRA
V4R-D	CATAGTACTTTCGTTCTTGATYRA
V4R-E	CATGTGCTACTTTCGTTCTTGATYRA
V4R-F	CGAGAGACACTTTCGTTCTTGATYRA
V4R-G	CGAGTACGACTTTCGTTCTTGATYRA
V4R-H	CGATGTAGACTTTCGTTCTTGATYRA
V4R-I	CGTATAGCACTTTCGTTCTTGATYRA
V4R-J	CGTGATGTACTTTCGTTCTTGATYRA
V4R-K	GAGATAGTACTTTCGTTCTTGATYRA
V4R-L	GAGTGTCTACTTTCGTTCTTGATYRA
V4R-M	GCATATACACTTTCGTTCTTGATYRA
V4R-N	GCATGACGACTTTCGTTCTTGATYRA
V4R-O	GCGAGTAGACTTTCGTTCTTGATYRA
V4R-P	GCTATGATACTTTCGTTCTTGATYRA
V4R-Q	GCTGATCGACTTTCGTTCTTGATYRA
V4R-R	TAGTAGAGACTTTCGTTCTTGATYRA
V4R-S	TATGATACACTTTCGTTCTTGATYRA
V4R-T	TCAGTAGTACTTTCGTTCTTGATYRA
V4R-U	TCATAGCTACTTTCGTTCTTGATYRA
V4R-V	TCGATGCGACTTTCGTTCTTGATYRA
V4R-W	TCTAGTGCACTTTCGTTCTTGATYRA
V4R-X	TGATGAGCACTTTCGTTCTTGATYRA
V4R-Y	TGTAGACTACTTTCGTTCTTGATYRA
V4R-Z	TGTGTGAGACTTTCGTTCTTGATYRA

Supplementary Table 3. Taxa-to-samples information. For each morphological sample (columns) are indicated the number of specimens of each species sorted and identified and its ITI value.

Taxon	st.1	st.2	st.3	st.4	st.5	st.6	st.7	st.8	st.9	st.10
Metazoa	0	0	0	0	0	0	1	1	0	0
Metazoa Annelida Capitellida Capitellidae Capitella Capitella+sp	5904	3395	1573	1409	1489	214	1	2	0	3
Metazoa Annelida Capitellida Capitellidae Mediomastus Mediomastus+fragilis	0	0	9	2	0	0	1	0	0	0
Metazoa Annelida Capitellida Capitellidae Notomastus Notomastus+sp	0	1	3	0	0	0	4	8	12	9
Metazoa Annelida Capitellida Maldanidae Praxillella Praxillella+sp	0	0	0	0	0	0	0	1	0	0
Metazoa Annelida Capitellida Maldanidae Rhodine Rhodine+loveni	0	0	0	0	0	0	1	1	0	2
Metazoa Annelida Capitellida Scalibregmatidae	0	0	0	0	0	0	1	0	0	0
Metazoa Annelida Capitellida Scalibregmatidae Polyphysia Polyphysia+crassa	0	1	0	0	0	0	0	1	1	0
Metazoa Annelida Capitellida Scalibregmatidae Scalibregma Scalibregma+inflatum	0	0	3	1	2	2	0	1	0	0
Metazoa Annelida Eunicida Dorvilleidae Ophryotrocha	0	0	1	1	0	0	0	0	0	0
Metazoa Annelida Eunicida Lumbrineridae Abyssoninoe Abyssoninoe+hibernica	0	0	0	0	0	0	0	1	1	0
Metazoa Annelida Eunicida Lumbrineridae Lumbrineris Lumbrineris+aniara	0	0	0	0	0	0	4	3	2	0
Metazoa Annelida Eunicida Onuphidae Aponuphis Aponuphis+bilineata	0	0	0	0	0	0	1	0	1	0
Metazoa Annelida Flabelligerida Flabelligeridae Diplocirrus Diplocirrus+glaucus	0	0	0	0	0	0	3	2	2	1
Metazoa Annelida Oligochaeta Naididae Tubificoides Tubificoides+benedii	42	60	134	23	3	2	0	0	0	0
Metazoa Annelida Phyllodocida Aphroditidae Aphrodita Aphrodita+aculeata	0	0	0	0	0	0	1	0	0	0
Metazoa Annelida Phyllodocida Glyceridae Glycera Glycera+alba	1	7	7	11	3	3	1	1	0	2
Metazoa Annelida Phyllodocida Hesionidae Oxydromus Oxydromus+flexuosus	0	1	0	1	0	0	0	2	1	2
Metazoa Annelida Phyllodocida Nephtyidae Nephtys Nephtys+incisa	0	0	0	0	0	0	1	3	1	6
Metazoa Annelida Phyllodocida Nephtyidae Nephtys Nephtys+kersivalensis	0	0	1	0	0	0	0	0	0	0
Metazoa Annelida Phyllodocida Nereididae	0	0	0	0	0	0	1	0	0	0
Metazoa Annelida Phyllodocida Pholoidae Pholoe Pholoe+baltica	0	0	2	3	3	0	31	20	21	10
Metazoa Annelida Phyllodocida Pholoidae Pholoe Pholoe+inornata	0	0	0	0	0	0	0	0	2	0
Metazoa Annelida Phyllodocida Phyllodocidae Eumida Eumida+bahusiensis	0	1	0	0	0	0	0	4	3	5
Metazoa Annelida Phyllodocida Phyllodocidae Eumida Eumida+sanguinea	0	0	3	2	0	0	0	0	2	0

Metazoa Annelida Phyllodocida Phyllodocidae Paranaitis Paranaitis+kosteriensis	0	0	0	0	0	0	1	4	0	1
Metazoa Annelida Phyllodocida Phyllodocidae Phyllodoce Phyllodoce+mucosa	0	0	1	1	0	0	0	0	0	0
Metazoa Annelida Phyllodocida Phyllodocidae Sige Sige+fusigera	0	0	0	0	0	0	3	2	0	0
Metazoa Annelida Phyllodocida Pilargidae Ancistrotyllis Ancistrotyllis+groenlandica	0	0	0	0	0	0	0	1	2	1
Metazoa Annelida Phyllodocida Pilargidae Litocorsa Litocorsa+stremma	0	0	0	0	0	0	1	1	0	1
Metazoa Annelida Phyllodocida Polynoidae Malmgrenia Malmgrenia+andrapolis	0	0	0	0	0	0	1	2	2	0
Metazoa Annelida Phyllodocida Polynoidae Malmgrenia Malmgrenia+arenicolae	0	0	0	0	0	0	0	0	0	2
Metazoa Annelida Phyllodocida Sphaerodoridae Sphaerodorum Sphaerodorum+gracilis	0	0	0	0	0	0	2	0	0	0
Metazoa Annelida Scolecida Opheliidae Ophelina Ophelina+acuminata	0	0	0	0	0	0	0	0	1	0
Metazoa Annelida Scolecida Paraonidae Levinsenia Levinsenia+gracilis	0	0	0	0	0	0	4	1	1	0
Metazoa Annelida Sipuncula Golfingiidae Thysanocardia Thysanocardia+procera	0	0	0	0	0	0	4	2	3	0
Metazoa Annelida Spionida Cirratulidae	0	0	0	0	0	0	1	0	0	0
Metazoa Annelida Spionida Cirratulidae Aphelochaeta Aphelochaeta+sp	0	0	0	0	0	0	0	0	0	1
Metazoa Annelida Spionida Cirratulidae Caulleriella Caulleriella+alata	0	0	7	6	0	0	0	0	0	0
Metazoa Annelida Spionida Cirratulidae Chaetozone Chaetozone+zetlandica	0	1	0	0	0	1	0	0	1	0
Metazoa Annelida Spionida Cirratulidae Cirratulus Cirratulus+sp	0	0	0	0	0	0	2	1	0	0
Metazoa Annelida Spionida Cirratulidae Cirriformia Cirriformia+tentaculata	1	17	24	4	1	1	0	0	0	0
Metazoa Annelida Spionida Cirratulidae Protocirrinieris Protocirrinieris+chrysoderma	0	0	0	0	0	0	0	0	1	0
Metazoa Annelida Spionida Magelonidae Magelona Magelona+minuta	0	0	0	0	0	0	2	0	0	0
Metazoa Annelida Spionida Spionidae Malacoceros Malacoceros+fuliginosus	227	343	62	36	34	1	0	0	0	1
Metazoa Annelida Spionida Spionidae Paraspio Paraspio+decorata	0	0	0	1	0	0	0	0	0	0
Metazoa Annelida Spionida Spionidae Prionospio Prionospio+fallax	0	0	0	0	0	0	1	2	0	1
Metazoa Annelida Spionida Spionidae Spiophanes Spiophanes+kroeyeri	0	0	0	0	0	0	4	3	6	3
Metazoa Annelida Terebellida Ampharetidae Ampharete Ampharete+lindstroemi	0	0	0	0	0	0	3	2	2	0
Metazoa Annelida Terebellida Ampharetidae Amphicteis Amphicteis+gunneri	0	0	0	0	0	0	0	0	1	0
Metazoa Annelida Terebellida Ampharetidae Melinna Melinna+palmata	0	0	0	0	0	0	28	9	1	0
Metazoa Annelida Terebellida Amphitrite Amphitrite Amphitrite+cirrata	0	0	0	0	0	0	0	1	0	0
Metazoa Annelida Terebellida Pectinariidae Pectinaria Pectinaria+belgica	0	0	0	0	0	0	0	0	1	0
Metazoa Annelida Terebellida Pectinariidae Pectinaria Pectinaria+koreni	0	1	0	1	0	0	0	0	0	0

Metazoa Annelida Terebellida Terebellidae Amaeana Amaeana+trilobata	0	0	0	0	0	0	1	2	4	2
Metazoa Annelida Terebellida Terebellidae Amphitritinae Amphitritinae+sp	0	0	0	0	0	0	0	0	1	0
Metazoa Annelida Terebellida Terebellidae Axionice Axionice+maculata	0	0	0	0	0	0	1	0	0	0
Metazoa Annelida Terebellida Terebellidae Polycirrus Polycirrus+plumosus	0	0	0	0	0	0	17	17	24	13
Metazoa Annelida Terebellida Terebellidae Polycirrus Polycirrus+sp	0	0	0	0	0	0	3	1	0	0
Metazoa Annelida Terebellida Terebellidae Terebellides Terebellides+stroemii	0	0	0	0	0	0	20	2	1	0
Metazoa Arthropoda Chelicerata Pycnogonida Anoplodactylus Anoplodactylus+petiolatus	0	0	0	0	0	0	0	0	0	1
Metazoa Arthropoda Crustacea Malacostraca Ampelisca Ampelisca+diadema	0	0	0	0	0	0	1	1	0	0
Metazoa Arthropoda Crustacea Malacostraca Ampelisca Ampelisca+tenuicornis	0	0	0	0	0	0	0	0	1	0
Metazoa Arthropoda Crustacea Malacostraca Autonoe Autonoe+longipes	0	0	0	0	0	0	1	0	0	0
Metazoa Arthropoda Crustacea Malacostraca Decapoda	0	0	0	0	0	0	0	0	0	1
Metazoa Arthropoda Crustacea Malacostraca Decapoda Decapoda_X	0	0	0	0	0	0	0	0	0	1
Metazoa Arthropoda Crustacea Malacostraca Eudorella Eudorella+emarginata	0	0	0	0	0	0	1	0	0	0
Metazoa Arthropoda Crustacea Malacostraca Jassa Jassa+sp	0	0	0	0	0	0	0	0	0	1
Metazoa Arthropoda Crustacea Malacostraca Leucothoe Leucothoe+lilljeborgi	0	0	0	0	0	0	0	0	1	0
Metazoa Arthropoda Crustacea Malacostraca Microdeutopus Microdeutopus+anomalus	0	0	2	1	0	2	0	0	0	0
Metazoa Arthropoda Crustacea Malacostraca Nebalia Nebalia+herbstii	0	1	0	0	0	0	0	0	0	0
Metazoa Arthropoda Crustacea Malacostraca Pariambus Pariambus+typicus	0	1	0	0	0	1	0	0	0	0
Metazoa Arthropoda Crustacea Maxillopoda Balanus Balanus+sp	0	0	0	0	0	1	0	0	0	0
Metazoa Arthropoda Crustacea Maxillopoda Calanus Calanus+finmarchicus	0	0	0	0	0	0	0	0	0	1
Metazoa Arthropoda Crustacea Maxillopoda Calanus Calanus+helgolandicus	0	1	0	0	0	0	0	0	0	0
Metazoa Arthropoda Crustacea Maxillopoda Copepoda	0	0	0	0	0	1	0	0	0	0
Metazoa Arthropoda Crustacea Maxillopoda Verruca Verruca+stroemia	0	0	0	0	0	0	0	0	2	0
Metazoa Arthropoda Hexapoda Insecta Chironomidae	0	0	1	0	0	0	0	0	0	0
Metazoa Bryozoa	1	0	0	0	0	0	0	0	0	0
Metazoa Cnidaria Cnidaria_X Anthozoa Edwardsia Edwardsia+claparedii	0	0	0	0	0	0	1	0	1	0
Metazoa Cnidaria Cnidaria_X Anthozoa Pennatula Pennatula+phosphorea	0	0	0	0	0	0	0	0	1	0
Metazoa Echinodermata Echinodermata_X Holothuroidea Labidoplax Labidoplax+sp	0	0	0	0	0	0	1	0	0	0
Metazoa Echinodermata Ophiuroidea	0	0	2	0	0	0	0	0	0	0

Metazoa Echinodermata Ophiuroidea Amphiuridae	0	0	0	0	0	0	11	7	0	1
Metazoa Echinodermata Ophiuroidea Amphiuridae Amphiura Amphiura+chiajei	0	0	0	0	0	0	12	10	7	11
Metazoa Echinodermata Ophiuroidea Amphiuridae Amphiura Amphiura+filiformis	0	0	0	0	0	0	1	7	25	2
Metazoa Entoprocta	0	1	0	0	0	0	0	0	5	0
Metazoa Mollusca Aplacophora Aplacophora_X Chaetoderma Chaetoderma+nitidulum	0	0	0	0	0	0	0	0	1	0
Metazoa Mollusca Aplacophora Aplacophora_X Falcidens Falcidens+crossotus	0	0	0	0	0	0	1	1	5	0
Metazoa Mollusca Aplacophora Aplacophora_X Scutopus Scutopus+ventrolineatus	0	0	0	0	0	0	0	0	0	2
Metazoa Mollusca Bivalvia Anomalodesmata Thracia Thracia+sp	0	0	2	4	5	6	0	0	0	0
Metazoa Mollusca Bivalvia Heteroconchia Abra Abra+alba	0	0	12	1	0	0	1	0	1	0
Metazoa Mollusca Bivalvia Heteroconchia Abra Abra+nitida	0	2	2	2	0	0	1	0	16	0
Metazoa Mollusca Bivalvia Heteroconchia Angulus Angulus+fabula	0	0	1	0	0	0	0	0	0	0
Metazoa Mollusca Bivalvia Heteroconchia Angulus Angulus+pygmaeus	0	0	1	0	0	0	0	0	0	0
Metazoa Mollusca Bivalvia Heteroconchia Chamelea Chamelea+striatula	0	0	0	0	0	0	0	1	0	0
Metazoa Mollusca Bivalvia Heteroconchia Myrtea Myrtea+spinifera	0	0	0	0	0	0	5	7	2	0
Metazoa Mollusca Bivalvia Heteroconchia Parvicardium Parvicardium+scabrum	0	0	0	0	0	0	0	1	0	0
Metazoa Mollusca Bivalvia Heteroconchia Venerupis Venerupis+corrugata	0	0	0	1	0	0	0	0	0	0
Metazoa Mollusca Bivalvia Heterodonta Corbula Corbula+gibba	0	0	0	0	0	0	24	19	1	8
Metazoa Mollusca Bivalvia Heterodonta Kurtiella Kurtiella+bidentata	1	0	0	0	0	0	14	22	17	15
Metazoa Mollusca Bivalvia Lucinoida Thyasira Thyasira+flexuosa	0	4	0	1	0	3	3	2	2	3
Metazoa Mollusca Bivalvia Mytiloida Modiolus Modiolus+modiolus	0	0	1	0	0	0	0	0	0	0
Metazoa Mollusca Bivalvia Mytiloida Mytilus Mytilus+edulis	0	0	1	0	1	0	0	0	0	0
Metazoa Mollusca Bivalvia Protobranchia Nucula Nucula+nitidosa	0	0	0	0	0	0	3	0	3	0
Metazoa Mollusca Bivalvia Protobranchia Nucula Nucula+sulcata	0	0	0	0	0	1	0	0	2	1
Metazoa Mollusca Gastropoda Caenogastropoda Turritella Turritella+communis	0	0	0	0	0	0	5	3	3	0
Metazoa Mollusca Gastropoda Heterobranchia Alvania Alvania+testae	0	0	0	0	0	0	0	0	1	0
Metazoa Mollusca Gastropoda Heterobranchia Bela Bela+brachystoma	0	0	0	0	0	0	0	2	0	0
Metazoa Mollusca Gastropoda Heterobranchia Crisilla Crisilla+semistriata	0	0	0	0	0	3	0	0	0	0
Metazoa Mollusca Gastropoda Heterobranchia Cylichna Cylichna+cylindracea	0	0	0	0	0	0	2	3	0	2
Metazoa Mollusca Gastropoda Heterobranchia Hyala Hyala+vitrea	24	41	0	0	0	0	51	25	16	10

Metazoa Mollusca Gastropoda Heterobranchia Odostomia Odostomia+sp	0	0	0	2	0	0	1	0	0	0
Metazoa Mollusca Gastropoda Heterobranchia Opisthobranchia	0	1	0	0	0	0	0	0	0	0
Metazoa Nematoda	0	0	0	0	0	0	0	1	0	0
Metazoa Nemertea	883	506	415	166	154	124	2	0	0	5
Metazoa Priapulida Priapulida_X Priapulida_XX Priapulus Priapulus+caudatus	0	0	0	0	0	0	11	3	4	0

Supplementary Table 4. Sequencing statistics for raw data filtering and metazoa sequence selection

Sample	Replicate	DNA			RNA		
		Total	Filtered	Metazoa	Total	Filtered	Metazoa
1	1	63	0	0	64701	41540	5722
	2	277	0	0	74863	50935	4984
	3	360	2	2	101137	72790	7684
	4	186	0	0	75131	49745	21914
	5	32927	23950	14364	81610	53277	8673
2	1	63467	45859	19807	56900	33003	8047
	2	46872	34143	16822	89899	57407	13884
	3	47392	36746	26435	78981	51026	18216
	4	41341	25101	15108	89462	60725	33207
	5	101	0	0	69936	42371	6460
3	1	54005	40193	30808	51313	32803	2705
	2	54667	37664	21788	27349	16034	719
	3	95313	70045	58621	47045	27471	11867
	4	57515	35555	24463	47743	29308	4281
	5	75916	56167	52189	48787	27251	6154
4	1	57239	40770	33092	33301	18305	8908
	2	40740	26360	11194	31227	16649	3923
	3	45131	30293	14546	14876	7816	3761
	4	53333	34802	17818	48072	27111	5496
	5	44681	27890	13242	54618	29191	13436
5	1	35220	24260	7450	34641	19318	2630
	2	38470	25747	7560	45227	24889	3471
	3	34080	25702	24721	56538	38415	25037
	4	45308	30633	14736	24479	13913	4752

	5	40271	26089	7658	18723	9634	2736
6	1	42069	31596	12402	46909	32947	4962
	2	35947	26029	18188	45782	31084	1708
	3	51948	38820	10639	22990	13858	1711
	4	59477	43298	15456	18149	9467	1338
	5	26835	18071	6474	37655	23826	2885
7	1	24552	13211	2353	75799	45633	6542
	2	17914	9176	9030	29187	16430	3064
	3	24058	12130	4844	33002	19273	568
	4	20908	12893	2292	34272	22315	5420
	5	30718	15147	3220	7261	3812	331
8	1	44719	29208	1911	16850	10080	134
	2	13278	7455	2067	28189	18872	437
	3	19570	12833	1317	36023	24073	1831
	4	61004	43801	27826	37888	24264	3144
	5	66132	42238	8915	21188	13057	690
9	1	55438	38000	840	92087	64950	954
	2	45706	27590	1829	81749	58978	859
	3	17046	8120	827	51098	28706	185
	4	29596	19431	1899	74333	46053	1408
	5	49640	37093	1028	43557	27191	117
10	1	33266	20322	10985	75296	53879	14649
	2	53124	40025	1887	96476	67556	387
	3	30109	20822	198	77214	50313	83
	4	25442	15863	1786	57201	36535	6569
	5	40795	26600	2937	60905	40262	7084

Supplementary table 5. Pairwise Wilcoxon Mann-Whitney tests (False Discovery Rate correction)

Pairwise comparisons of the number of specimens among morphology samples

	3	4	5	6	7	8	9	2	1
3	0.709	-	-	-	-	-	-	-	-
4	0.015**	0.035*	-	-	-	-	-	-	-
5	0.139	0.268	0.308	-	-	-	-	-	-
6	0.001***	0***	0***	0***	-	-	-	-	-
7	0.005***	0.001***	0***	0***	0.594	-	-	-	-
8	0.004***	0.001***	0***	0***	0.594	0.960	-	-	-
9	0.437	0.659	0.090	0.537	0***	0***	0***	-	-
2	0.008***	0.019**	0.838	0.210	0***	0***	0***	0.057	-
1	0.253	0.112	0***	0.006***	0.021**	0.088	0.088	0.04*	0***

Pairwise comparisons of the number of sequence reads among DNA samples

	3	4	5	6	7	8	9	2	1
3	0.119	-	-	-	-	-	-	-	-
4	0.079	0.455	-	-	-	-	-	-	-
5	0.036*	0.498	0.901	-	-	-	-	-	-
6	0.036*	0.036*	0.119	0.051	-	-	-	-	-
7	0.079	0.186	0.498	0.37	0.616	-	-	-	-
8	0.036*	0.036*	0.036*	0.036*	0.036*	0.079	-	-	-
9	0.13	0.498	0.2	0.2	0.051	0.33	0.051	-	-
2	0.455	1	1	1	0.455	0.732	0.455	0.498	-
1	0.036	0.036*	0.119	0.079	0.455	0.616	0.498	0.051	0.455

Pairwise comparisons of the number of sequence reads among RNA samples

	3	4	5	6	7	8	9	2	1
3	0.77 -	-	-	-	-	-	-	-	-
4	1	0.6 -	-	-	-	-	-	-	-
5	0.676	0.13	0.526 -	-	-	-	-	-	-
6	0.77	0.399	0.818	0.923 -	-	-	-	-	-
7	0.19	0.089	0.13	0.6	0.676 -	-	-	-	-
8	0.19	0.089	0.089	0.089	0.526	0.818 -	-	-	-
9	0.13	0.19	0.312	0.089	0.089	0.089	0.089 -	-	-
2	0.818	1	0.818	0.6	0.6	0.6	0.6	0.923 -	-
1	1	0.923	1	0.818	0.77	0.77	0.676	0.19	0.818

Supplementary table 6. Pairwise Wilcoxon Mann-Whitney tests among DNA or among RNA samples (False Discovery Rate correction)

Pairwise comparisons of the number of OTUs among DNA samples

	3	4	5	6	7	8	9	2	1
3	0.342	-	-	-	-	-	-	-	-
4	0.655	0.655	-	-	-	-	-	-	-
5	0.977	0.280	0.531	-	-	-	-	-	-
6	0.001	0.002	0.001	0.000	-	-	-	-	-
7	0.021	0.031	0.016	0.004	0.330	-	-	-	-
8	0.074	0.251	0.159	0.031	0.003	0.087	-	-	-
9	0.251	0.019	0.087	0.211	0.000	0.003	0.003	-	-
2	0.004	0.002	0.003	0.003	0.002	0.003	0.002	0.008	-
1	0.000	0.000	0.000	0.000	0.000	0.000	0.000	0.003	0.061

Pairwise comparisons of the number of OTUs among RNA samples

	3	4	5	6	7	8	9	2	1
3	0.742	-	-	-	-	-	-	-	-
4	0.728	0.930	-	-	-	-	-	-	-
5	0.413	0.779	0.724	-	-	-	-	-	-
6	0.877	0.723	0.651	0.325	-	-	-	-	-
7	0.355	0.553	0.533	0.799	0.330	-	-	-	-
8	0.000	0.012	0.002	0.002	0.001	0.036	-	-	-
9	0.877	0.877	0.880	0.557	0.724	0.413	0.001	-	-
2	0.006	0.079	0.036	0.072	0.012	0.238	0.413	0.017	-
1	0.000	0.002	0.001	0.001	0.001	0.004	0.352	0.001	0.091

Supplementary Table 7. continued

OTU	assign	DNA_4_1	DNA_4_2	DNA_4_3	DNA_4_4	DNA_4_5	DNA_5_1	DNA_5_2	DNA_5_3	DNA_5_4	DNA_5_5
OTU1	Metazoa Annelida Capitellida Capitellidae Capitella	3359.67	345.91	1218.95	0	0	2170.69	1.23	3770.13	433.46	5.35
OTU2	Metazoa Annelida Oligochaeta Tubificidae	259.49	1942.06	2285.42	2745.99	2317.17	2.13	379.21	50.59	2941.38	2151.51
OTU4	Metazoa Annelida Phyllodocida Phyllodocidae Phyllodoce Phyllodoce+maculata	15.5	67.09	82.86	27.73	0	100.93	2.14	41.87	392.74	1587.72
OTU5	Metazoa Annelida Spionida Spionidae Malacoceros Malacoceros+fuliginosus	0	0	0	0	0	0	0	0	0	0
OTU6	Metazoa Annelida Spionida Cirratulidae	321.84	1456.94	403.71	1107.08	1208.68	1358.18	922.58	211.8	199.64	0
OTU7	Metazoa Platyhelminthes	14.55	61.42	0	42.15	18.19	0	44.05	0	51.99	90.83
OTU8	Metazoa Annelida Phyllodocida Syllidae Salvatoria	0	0	0	0	0	0	2365.25	11.41	0	0
OTU9	Metazoa Annelida	0	0	0	0	0	0	65.09	0	0	0
OTU10	Metazoa Nematoda	0	0	0	0	91.13	0	0	0	0	0
OTU11	Metazoa Nematoda	4.17	3.78	10.99	0	0	192.14	126.24	4.1	15.15	96.52
OTU12	Metazoa Nematoda	23.47	122.38	37.99	133.24	119.75	38.7	15.92	1.71	5.42	25.91
OTU13	Metazoa Cnidaria Cnidaria_X Anthozoa	0	0	0	0	0	0	0	0	0	0
OTU14	Metazoa Nemertea	0	0	0	0	0	0	0	0	0	0
OTU15	Metazoa Mollusca Bivalvia Heteroconchia Abra	0	0	0	0	0	0	0	0	0	0
OTU16	Metazoa Platyhelminthes	0	0	0	0	0	0	0	0	0	0
OTU17	Metazoa Cnidaria Cnidaria_X Hydrozoa	2.64	0	0	0	0	0	0	0	0	0
OTU18	Metazoa Platyhelminthes	0	19.88	0	0	23.84	1.68	56.99	0	15.83	0
OTU19	Metazoa Arthropoda Crustacea Ostracoda	0	0	0	0	0	0	0	0	0	0
OTU20	Metazoa Nematoda	0	15.18	20.48	11.89	10.1	44.44	53.9	5.96	8.47	47.12
OTU21	Metazoa Annelida Terebellida Ampharetidae	0	0	0	0	0	0	0	0	0	0
OTU22	Metazoa Annelida Phyllodocida Syllidae Exogone Exogone+naidina	0	0	0	0	0	0	0	0	0	0
OTU23	Metazoa Platyhelminthes	0	0	0	0	0	0	0	0	0	0
OTU24	Metazoa Platyhelminthes	0	0	0	0	0	0	0	0	0	0
OTU25	Metazoa Mollusca Bivalvia Heteroconchia Corbula	0	0	0	0	0	0	0	0	0	0
OTU26	Metazoa Annelida Capitellida Capitellidae Heteromastus	3.64	0	12.68	0	34.37	65.18	0	2.94	0	0

OTU27	Metazoa Arthropoda Crustacea Maxillopoda Copepoda	0	0	0	0	0	0	0	0	0	0
OTU28	Metazoa Nematoda	1.48	14.4	5.22	3.77	8.93	40.31	18.46	0	11.67	30.49
OTU29	Metazoa Cnidaria Cnidaria_X Hydrozoa	0	0	0	0	0	0	0	0	0	0
OTU30	Metazoa Mollusca Gastropoda Heterobranchia Bulla	0	0	0	0	207.45	0	0	0	0	0
OTU31	Metazoa Platyhelminthes	0	0	0	0	0	0	0	0	0	0
OTU32	Metazoa Arthropoda Crustacea Ostracoda	0	0	0	11.48	0	42.24	6.36	0	0	0
OTU33	Metazoa Nemertea	0	0	0	0	0	0	0	0	0	0
OTU35	Metazoa Nemertea	0	0	0	0	0	0	0	0	0	0
OTU36	Metazoa Arthropoda Chelicerata	4.76	0	0	5.45	0	3.44	0	0	0	0
OTU37	Metazoa Annelida Phyllodocida Syllidae Erinaceusyllis Erinaceusyllis+cryptica	0	0	0	0	0	0	0	0	0	0
OTU38	Metazoa Platyhelminthes	0	0	0	0	0	0	0	0	0	0
OTU39	Metazoa Arthropoda Crustacea Maxillopoda Copepoda	0	24.99	2.8	0	29.36	15.04	20.94	0	12.22	12.33
OTU40	Metazoa Annelida Capitellida Maldanidae Praxillella	0	0	0	0	0	0	0	0	0	0
OTU41	Metazoa Arthropoda Crustacea Maxillopoda Copepoda	59.87	0	0	0	0	0	0	0	0	0
OTU42	Metazoa Annelida Phyllodocida Syllidae Exogone Exogone+naidina	0	0	0	0	0	0	0	0	0	0
OTU43	Metazoa Hemichordata	0	0	0	0	0	0	0	0	0	0
OTU44	Metazoa Cnidaria Cnidaria_X Hydrozoa	0	0	0	0	0	0	0	0	3.01	0
OTU45	Metazoa Mollusca Bivalvia Protobranchia Nucula	0	0	0	3.18	0	0	0	0	0	0
OTU46	Metazoa Annelida Capitellida Capitellidae Capitella	0	0	0	0	0	0	0	0	0	0
OTU47	Metazoa Platyhelminthes	0	0	0	0	0	0	0	0	0	0
OTU48	Metazoa Platyhelminthes	0	0	0	0	0	0	0	0	0	0
OTU49	Metazoa Platyhelminthes	0	0	0	0	0	0	0	0	0	0
OTU51	Metazoa Nematoda	4.03	6.79	0	6.55	9.08	19.62	13.16	0	6.08	37.77
OTU52	Metazoa Annelida Capitellida Maldanidae	0	0	0	0	0	0	0	0	0	0
OTU53	Metazoa Nematoda	8.32	10.91	0	0	0	2.69	0	0	1.77	4.31
OTU54	Metazoa Annelida Oligochaeta Tubificidae	0	0	0	0	0	0	0	0	0	0
OTU55	Metazoa Platyhelminthes	0	0	0	0	0	0	0	0	0	0
OTU56	Metazoa Platyhelminthes	0	0	0	0	0	0	0	0	0	0
OTU58	Metazoa Nematoda	0	6.3	3.04	1.6	19.55	2.21	0	0	0	2.01

Supplementary Table 7. continued

OTU	assign	DNA_6_1	DNA_6_2	DNA_6_3	DNA_6_4	DNA_6_5	DNA_7_1	DNA_7_2	DNA_7_3	DNA_7_4	DNA_7_5
OTU1	Metazoa Annelida Capitellida Capitellidae Capitella	2807.39	2780.39	3299.36	2096.31	2163.16	0	0	0	0	0
OTU2	Metazoa Annelida Oligochaeta Tubificidae	238.28	13.48	131.97	378.68	510.81	0	0	0	0	0
OTU4	Metazoa Annelida Phyllodocida Phyllodocidae Phyllodoce Phyllodoce+maculata	0	7.67	0	148.7	114.44	0	3569.67	0	0	0
OTU5	Metazoa Annelida Spionida Spionidae Malacoceros Malacoceros+fuliginosus	0	0	0	0	0	0	0	0	0	0
OTU6	Metazoa Annelida Spionida Cirratulidae	0	0	0	0	0	0	0	0	0	0
OTU7	Metazoa Platyhelminthes	23.64	216.41	182.76	31.08	601.8	46.55	16.72	3270.95	0	77.34
OTU8	Metazoa Annelida Phyllodocida Syllidae Salvatoria	942.58	961.39	3.83	1281.81	57.04	0	0	0	4.11	498.7
OTU9	Metazoa Annelida	1.01	1.17	55.64	69.29	0	486.21	404.19	0	1238.57	871.19
OTU10	Metazoa Nematoda	0	0	0	0	0	0	0	0	0	0
OTU11	Metazoa Nematoda	0	0	0	2.39	0	0	0	0	0	0
OTU12	Metazoa Nematoda	19.69	25.65	137.13	47.14	94.97	0	0	0	0	4.17
OTU13	Metazoa Cnidaria Cnidaria_X Anthozoa	0	0	0	0	0	0	0	0	0	0
OTU14	Metazoa Nemertea	0	0	0	0	0	0	28.72	0	0	0
OTU15	Metazoa Mollusca Bivalvia Heteroconchia Abra	0	0	0	0	0	0	0	0	6.3	38.99
OTU16	Metazoa Platyhelminthes	0	0	0	0	0	470.94	7.02	26.64	43.7	139.46
OTU17	Metazoa Cnidaria Cnidaria_X Hydrozoa	0	0	0	1.44	0	0	0	14.47	14.02	218.58
OTU18	Metazoa Platyhelminthes	5.55	4.29	90.35	20.5	53.18	141.97	0	9.14	0	0
OTU19	Metazoa Arthropoda Crustacea Ostracoda	0	0	0	0	0	104.68	0	88.11	22.35	15.6
OTU20	Metazoa Nematoda	4.89	2.52	42.03	5.16	29.78	0	0	0	0	0
OTU21	Metazoa Annelida Terebellida Ampharetidae	0	0	0	0	0	0	0	0	2390.04	0
OTU22	Metazoa Annelida Phyllodocida Syllidae Exogone Exogone+naidina	0	0	0	0	0	0	0	0	0	0
OTU23	Metazoa Platyhelminthes	0	0	0	0	0	443.59	8.12	238.09	25.4	292.63
OTU24	Metazoa Platyhelminthes	0	0	0	0	0	0	0	0	0	0
OTU25	Metazoa Mollusca Bivalvia Heteroconchia Corbula	0	0	0	0	0	0	0	0	0	0
OTU26	Metazoa Annelida Capitellida Capitellidae Heteromastus	2.83	0	4.17	5.21	17.22	0	0	0	8.11	0

OTU27	Metazoa Arthropoda Crustacea Maxillopoda Copepoda	0	0	0	0	0	12.54	1.54	8.67	5.84	38.96
OTU28	Metazoa Nematoda	0	0	0	0	3.69	0	0	0	0	0
OTU29	Metazoa Cnidaria Cnidaria_X Hydrozoa	0	0	0	0	0	967.11	0	0	0	0
OTU30	Metazoa Mollusca Gastropoda Heterobranchia Bulla	0	0	0	0	0	544.66	0	0	0	0
OTU31	Metazoa Platyhelminthes	0	0	0	0	0	116.67	2.69	32.21	21.49	0
OTU32	Metazoa Arthropoda Crustacea Ostracoda	0	0	26.54	0	0	0	0	0	0	0
OTU33	Metazoa Nemertea	0	0	0	0	0	0	0	0	0	0
OTU35	Metazoa Nemertea	0	0	0	0	0	0	0	39.37	0	0
OTU36	Metazoa Arthropoda Chelicerata	0	0	0	0	0	0	0	0	51.14	529.5
OTU37	Metazoa Annelida Phyllodocida Syllidae Erinaceusyllis Erinaceusyllis+cryptica	0	2.22	0	0	420.16	0	0	0	0	7.79
OTU38	Metazoa Platyhelminthes	49.78	0	0	0	0	0	0	0	0	0
OTU39	Metazoa Arthropoda Crustacea Maxillopoda Copepoda	0	0	1.06	1.11	0	0	0	0	0	272.28
OTU40	Metazoa Annelida Capitellida Maldanidae Praxillella	0	0	0	0	0	0	0	0	0	0
OTU41	Metazoa Arthropoda Crustacea Maxillopoda Copepoda	0	0	0	0	0	0	0	0	0	0
OTU42	Metazoa Annelida Phyllodocida Syllidae Exogone Exogone+naidina	0	0	108.45	0	27.92	0	0	0	0	0
OTU43	Metazoa Hemichordata	0	0	0	0	0	0	34.71	240.66	0	0
OTU44	Metazoa Cnidaria Cnidaria_X Hydrozoa	0	0	0	0	1.38	0	0	0	0	0
OTU45	Metazoa Mollusca Bivalvia Protobranchia Nucula	0	0	0	0	0	26.03	0	0	0	0
OTU46	Metazoa Annelida Capitellida Capitellidae Capitella	0	80.84	0	0	0	0	0	0	0	0
OTU47	Metazoa Platyhelminthes	0	0	0	0	0	84.53	0	0	0	355.14
OTU48	Metazoa Platyhelminthes	0	0	0	0	0	29.32	0	0	0	22.1
OTU49	Metazoa Platyhelminthes	0	0	0	0	0	0	0	0	0	0
OTU51	Metazoa Nematoda	0	0	3.13	2.15	0	0	0	0	0	0
OTU52	Metazoa Annelida Capitellida Maldanidae	0	0	0	0	0	0	0	0	0	145.3
OTU53	Metazoa Nematoda	0	0	13.29	0	5.16	0	0	0	0	0
OTU54	Metazoa Annelida Oligochaeta Tubificidae	0	0	0	0	0	0	0	0	0	0
OTU55	Metazoa Platyhelminthes	0	0	0	0	0	165.04	0	19.76	8.37	21.08
OTU56	Metazoa Platyhelminthes	0	0	0	0	0	27.17	0	17.95	0	155.79
OTU58	Metazoa Nematoda	0	0	0	0	1.29	0	0	0	0	21.52

OTU59	Metazoa Echinodermata Echinodermata_X Echinodermata_XX Amphiura	0	0	0	0	0	0	0	0	177.01	0
OTU60	Metazoa Platyhelminthes	0	0	0	0	0	0	0	0	0	0
OTU61	Metazoa Cnidaria Cnidaria_X Hydrozoa	0	0	0	0	0	0	0	0	0	0
OTU62	Metazoa Platyhelminthes	0	0	0	0	0	0	0	0	0	0
OTU64	Metazoa Arthropoda Crustacea Maxillopoda Copepoda	0	0	0	0	0	0	0	0	0	0
OTU65	Metazoa Nematoda	0	0	0	0	0	0	0	0	0	174.08
OTU66	Metazoa Arthropoda Crustacea Maxillopoda Copepoda	0	0	0	0	0	14.6	1.2	1.54	4.25	0
OTU68	Metazoa Platyhelminthes	0	0	0	0	0	0	0	0	0	0
OTU69	Metazoa Platyhelminthes	0	0	0	0	0	0	0	0	0	0
OTU70	Metazoa Arthropoda Crustacea Maxillopoda Copepoda	0	0	0	0	0	0	0	0	0	0
OTU71	Metazoa Platyhelminthes	0	0	0	0	0	0	0	0	0	0
OTU72	Metazoa Nematoda	0	0	0	0	0	0	0	0	0	0
OTU73	Metazoa Nematoda	0	0	0	0	0	0	0	0	0	0
OTU75	Metazoa Gastrotricha	0	0	0	0	0	5.88	0	0	0	11.78
OTU76	Metazoa Arthropoda Crustacea Maxillopoda Copepoda	0	0	0	0	0	5.98	0	0	0	25.72
OTU78	Metazoa Mollusca Gastropoda Heterobranchia Calliopaea Calliopaea+bellula	0	0	1.52	0	0	0	0	0	0	0
OTU79	Metazoa Annelida Phyllodocida Syllidae	4.86	0	0	2.03	0	0	0	0	0	0
OTU80	Metazoa Echinodermata Echinodermata_X Echinodermata_XX Leptosynapta	0	0	0	0	0	0	0	71.1	0	0
OTU82	Metazoa Annelida Capitellida Capitellidae Capitella	0	0	0	0	0	0	0	0	0	0
OTU84	Metazoa Annelida Capitellida Capitellidae Capitella	0	0	0	0	0	0	0	9.32	0	0
OTU85	Metazoa Platyhelminthes	0	0	0	0	0	0	0	0	0	0
OTU86	Metazoa Platyhelminthes	0	0	0	0	0	0	0	0	0	0
OTU87	Metazoa Annelida Terebellida Terebellidae	0	0	0	0	0	0	0	0	0	0
OTU88	Metazoa Platyhelminthes	0	0	0	0	0	0	0	0	0	0
OTU89	Metazoa Annelida Oligochaeta Tubificidae	0	0	0	0	0	0	0	0	0	0
OTU90	Metazoa Cnidaria Cnidaria_X Anthozoa Ceriantheopsis	0	0	0	0	0	0	0	0	0	0
OTU91	Metazoa Annelida Capitellida Scalibregmatidae Scalibregma Scalibregma+inflatum	0	0	0	0	0	0	0	0	0	0
OTU92	Metazoa Annelida Scolecida Opheliidae Ophelina	0	0	0	0	0	0	0	0	0	0
OTU93	Metazoa Gastrotricha	0	0	0	0	0	21.23	0	0	0	24.52

OTU125	Metazoa Platyhelminthes	0	0	0	0	0	0	0	0	0	0
OTU126	Metazoa Nematoda	0	2.73	0	0	0	0	0	0	0	0
OTU128	Metazoa Kinorhyncha	0	0	0	0	0	0	0	0	0	29.68
OTU130	Metazoa Annelida Phyllodocida Phyllodocidae	0	0	0	0	0	0	1.01	0	0	0
OTU131	Metazoa Annelida Oligochaeta Tubificidae	0	0	0	0	0	0	0	0	0	0
OTU132	Metazoa Nematoda	0	0	0	0	0	0	0	0	0	0
OTU134	Metazoa Annelida Phyllodocida Syllidae	0	2.32	0	0	0	0	0	0	0	0
OTU135	Metazoa Annelida Capitellida Capitellidae Capitella	0	0	0	0	0	0	0	0	0	0
OTU136	Metazoa Nematoda	0	0	0	0	0	0	0	0	0	0
OTU137	Metazoa Hemichordata	0	0	0	0	0	0	0	0	0	0
OTU138	Metazoa	0	0	0	0	0	39.08	0	0	0	0
OTU141	Metazoa Nematoda	0	0	0	0	0	0	0	0	0	0
OTU143	Metazoa Annelida Capitellida Capitellidae Capitella	0	0	0	0	0	0	0	0	0	0
OTU144	Metazoa Platyhelminthes	0	0	0	0	0	0	0	4.18	0	0
OTU145	Metazoa Annelida Spionida Spionidae Malacoceros Malacoceros+fuliginosus	0	0	0	0	0	0	0	0	0	0
OTU146	Metazoa Arthropoda Crustacea Maxillopoda Copepoda	0	0	0	0	0	0	0	0	0	0
OTU147	Metazoa Porifera	0	0	0	0	0	27.24	0	0	0	0
OTU149	Metazoa Mollusca Bivalvia Heteroconchia Macoma Macoma+nasuta	0	0	0	0	0	0	0	0	0	0
OTU151	Metazoa Nematoda	0	0	0	0	0	0	0	0	0	0
OTU152	Metazoa Platyhelminthes	0	0	0	0	0	0	0	0	0	0
OTU153	Metazoa Annelida Phyllodocida Phyllodocidae	0	0	0	0	0	0	0	0	0	0
OTU154	Metazoa Annelida Spionida Cirratulidae	0	0	0	0	0	0	0	0	0	0
OTU155	Metazoa Annelida Spionida Cirratulidae	0	0	0	0	0	0	0	0	17.24	0
OTU156	Metazoa Arthropoda Crustacea Maxillopoda Copepoda	0	0	0	0	0	0	0	0	0	0
OTU157	Metazoa Annelida Phyllodocida Phyllodocidae	0	0	0	0	0	0	0	0	0	0
OTU158	Metazoa Annelida Phyllodocida Phyllodocidae	0	0	0	0	0	0	3.26	0	0	0
OTU159	Metazoa Rotifera	0	0	0	0	0	0	0	0	0	0
OTU160	Metazoa Arthropoda Crustacea Maxillopoda Copepoda	0	0	0	0	0	0	0	0	0	0
OTU161	Metazoa Platyhelminthes	0	0	0	0	0	0	0	3.26	0	0

Supplementary Table 7. continued

OTU	assign	DNA_8_1	DNA_8_2	DNA_8_3	DNA_8_4	DNA_8_5	DNA_9_1	DNA_9_2	DNA_9_3	DNA_9_4	DNA_9_5
OTU1	Metazoa Annelida Capitellida Capitellidae Capitella	0	3.8	0	0	760.88	0	0	0	0	0
OTU2	Metazoa Annelida Oligochaeta Tubificidae	0	0	0	0	0	0	0	0	0	0
OTU4	Metazoa Annelida Phyllodocida Phyllodocidae Phyllodoce Phyllodoce+maculata	0	12.39	0	3635.72	1696.01	0	0	0	0	0
OTU5	Metazoa Annelida Spionida Spionidae Malacoceros Malacoceros+fuliginosus	0	0	0	0	0	0	0	0	0	0
OTU6	Metazoa Annelida Spionida Cirratulidae	0	0	0	0	0	0	0	0	0	0
OTU7	Metazoa Platyhelminthes	1190.77	0	1166.86	63.83	1324.94	0	0	1463.03	0	2540.07
OTU8	Metazoa Annelida Phyllodocida Syllidae Salvatoria	0	0	16.29	0	36.66	609.39	22.83	178.81	0	188.6
OTU9	Metazoa Annelida	2.22	3121.52	0	0	0	0	0	0	0	0
OTU10	Metazoa Nematoda	0	0	0	0	0	0	0	0	0	0
OTU11	Metazoa Nematoda	0	0	0	0	0	0	0	0	0	0
OTU12	Metazoa Nematoda	0	0	0	0	0	0	0	0	0	0
OTU13	Metazoa Cnidaria Cnidaria_X Anthozoa	0	0	0	0	0	0	0	0	0	0
OTU14	Metazoa Nemertea	0	0	0	227.91	0	0	0	0	0	0
OTU15	Metazoa Mollusca Bivalvia Heteroconchia Abra	0	0	0	0	0	0	0	209.74	0	0
OTU16	Metazoa Platyhelminthes	520.47	375.23	72.49	20.73	6.25	0	0	0	112.56	0
OTU17	Metazoa Cnidaria Cnidaria_X Hydrozoa	105	0	145.45	0	65.27	102.68	781.14	0	0	0
OTU18	Metazoa Platyhelminthes	0	0	48.86	0	0	160.18	0	0	16.17	0
OTU19	Metazoa Arthropoda Crustacea Ostracoda	274.29	125.64	0	14.79	75.79	0	768.2	0	189.52	682.25
OTU20	Metazoa Nematoda	0	0	0	0	0	0	0	0	0	0
OTU21	Metazoa Annelida Terebellida Ampharetidae	0	0	0	0	0	0	0	0	0	0
OTU22	Metazoa Annelida Phyllodocida Syllidae Exogone Exogone+naidina	0	0	0	0	0	0	0	0	0	0
OTU23	Metazoa Platyhelminthes	462.73	0	229.87	5.14	5.01	0	522.9	897.08	373.18	114.57
OTU24	Metazoa Platyhelminthes	0	0	0	0	0	0	0	0	0	0
OTU25	Metazoa Mollusca Bivalvia Heteroconchia Corbula	0	0	0	0	0	0	0	0	0	0
OTU26	Metazoa Annelida Capitellida Capitellidae Heteromastus	0	0	198.03	0	17.27	0	0	0	0	0
OTU27	Metazoa Arthropoda Crustacea Maxillopoda Copepoda	287.7	0	115.16	16.02	11.99	101.96	53.07	134.63	218.12	78.5

OTU60	Metazoa Platyhelminthes	291.57	0	0	0	0	0	0	0	0	0
OTU61	Metazoa Cnidaria Cnidaria_X Hydrozoa	183.55	0	0	0	0	0	0	0	0	0
OTU62	Metazoa Platyhelminthes	0	0	0	0	0	0	0	0	0	0
OTU64	Metazoa Arthropoda Crustacea Maxillopoda Copepoda	0	0	0	0	0	0	0	0	0	0
OTU65	Metazoa Nematoda	0	0	0	0	0	0	0	0	0	0
OTU66	Metazoa Arthropoda Crustacea Maxillopoda Copepoda	56.45	0	48.66	2.1	1.5	106.53	55.93	0	0	0
OTU68	Metazoa Platyhelminthes	0	0	24.55	3.02	0	0	0	0	0	0
OTU69	Metazoa Platyhelminthes	0	0	0	0	0	0	0	0	0	0
OTU70	Metazoa Arthropoda Crustacea Maxillopoda Copepoda	0	0	0	2.58	0	11.83	98.55	40.42	80.09	66.62
OTU71	Metazoa Platyhelminthes	0	0	0	0	0	585.11	0	0	0	0
OTU72	Metazoa Nematoda	0	0	0	0	0	0	0	0	0	0
OTU73	Metazoa Nematoda	0	0	0	0	0	0	0	0	0	0
OTU75	Metazoa Gastrotricha	11	0	0	0	0	54.54	0	19.36	15.98	11.73
OTU76	Metazoa Arthropoda Crustacea Maxillopoda Copepoda	55.02	0	0	0	0	90.01	25.06	0	47.99	0
OTU78	Metazoa Mollusca Gastropoda Heterobranchia Calliopaea Calliopaea+bellula	0	0	0	0	0	0	0	0	0	0
OTU79	Metazoa Annelida Phyllodocida Syllidae	0	0	0	0	0	0	0	0	0	0
OTU80	Metazoa Echinodermata Echinodermata_X Echinodermata_XX Leptosynapta	0	0	0	0	0	0	0	0	0	0
OTU82	Metazoa Annelida Capitellida Capitellidae Capitella	0	0	0	0	0	0	0	0	0	0
OTU84	Metazoa Annelida Capitellida Capitellidae Capitella	47.21	69.88	0	0	0	0	0	0	0	0
OTU85	Metazoa Platyhelminthes	0	0	0	3.59	19.94	0	0	0	0	0
OTU86	Metazoa Platyhelminthes	0	0	0	0	0	0	0	0	0	0
OTU87	Metazoa Annelida Terebellida Terebellidae	0	0	0	0	0	0	0	0	0	0
OTU88	Metazoa Platyhelminthes	0	0	0	0	0	0	0	0	0	0
OTU89	Metazoa Annelida Oligochaeta Tubificidae	0	0	0	0	0	0	0	0	0	0
OTU90	Metazoa Cnidaria Cnidaria_X Anthozoa Ceriantheopsis	0	0	0	0	0	0	0	0	273.12	0
OTU91	Metazoa Annelida Capitellida Scalibregmatidae Scalibregma Scalibregma+inflatum	0	0	0	0	0	0	12.89	0	0	0
OTU92	Metazoa Annelida Scolecida Opheliidae Ophelina	0	0	0	0	0	296.29	0	0	0	0
OTU93	Metazoa Gastrotricha	29.27	0	0	0	0	0	0	0	0	7.61
OTU94	Metazoa Platyhelminthes	0	0	320.31	0	0	0	0	0	0	0

OTU95	Metazoa Arthropoda Crustacea Ostracoda	0	0	0	0	0	18.19	0	173.72	0	0
OTU96	Metazoa Platyhelminthes	0	0	0	0	0	42.81	0	0	0	0
OTU97	Metazoa Platyhelminthes	0	0	0	0	0	0	0	208.57	0	0
OTU98	Metazoa Platyhelminthes	0	0	0	0	0	0	0	0	0	0
OTU99	Metazoa Platyhelminthes	0	0	0	0	0	0	0	0	148.64	0
OTU100	Metazoa Arthropoda Crustacea Ostracoda	0	0	0	2.29	0	0	0	0	0	0
OTU101	Metazoa Annelida Phyllodocida Phyllodocidae	0	0	0	0	0	0	0	0	0	0
OTU102	Metazoa Arthropoda Crustacea Maxillopoda Copepoda	0	0	0	1.9	0	41.4	18.03	19.27	0	20.36
OTU103	Metazoa Nemertea	0	0	0	2.51	0	0	0	0	0	0
OTU104	Metazoa Annelida Phyllodocida Syllidae	0	0	0	0	0	48.19	0	0	0	0
OTU107	Metazoa Arthropoda Crustacea Ostracoda	0	0	16.35	0	0	30.55	26.83	0	69.41	0
OTU108	Metazoa Annelida Spionida Spionidae Malacoceros Malacoceros+fuliginosus	0	0	0	0	0	0	0	0	0	0
OTU109	Metazoa Arthropoda Crustacea Maxillopoda Copepoda	0	0	0	0	0	0	0	0	0	0
OTU110	Metazoa Arthropoda Crustacea Maxillopoda Copepoda	0	0	0	0	0	0	0	0	21.09	0
OTU111	Metazoa Kinorhyncha	28.92	0	0	0	0	11.97	0	62.85	10.58	0
OTU112	Metazoa Platyhelminthes	0	0	49.28	0	0	0	0	89.49	0	0
OTU113	Metazoa Nematoda	8.67	0	0	0	0	0	0	0	0	0
OTU114	Metazoa Nematoda	0	0	0	0	0	0	0	0	0	0
OTU115	Metazoa	0	0	0	0	0	0	0	0	0	0
OTU116	Metazoa Platyhelminthes	0	0	0	0	0	140.3	0	0	0	0
OTU117	Metazoa Nematoda	0	0	0	0	0	0	9.59	0	0	0
OTU118	Metazoa Arthropoda Crustacea Maxillopoda Copepoda	0	0	0	0	0	0	0	0	0	0
OTU119	Metazoa Nematoda	0	0	0	0	0	0	0	0	0	0
OTU120	Metazoa Platyhelminthes	0	0	0	0	0	0	0	0	0	47.5
OTU121	Metazoa Nematoda	0	0	0	1.02	0	0	0	0	0	0
OTU122	Metazoa Annelida Oligochaeta Tubificidae	0	0	0	0	0	0	0	0	0	0
OTU123	Metazoa Mollusca Bivalvia Heteroconchia Myrtea Myrtea+spinifera	0	0	0	2.75	0	0	0	0	0	0
OTU124	Metazoa Annelida Terebellida Pectinariidae Pectinaria	0	0	0	0	0	0	0	0	0	55.44
OTU125	Metazoa Platyhelminthes	0	0	0	0	1.52	0	0	0	0	59.95

OTU59	Metazoa Echinodermata Echinodermata_X Echinodermata_XX Amphiura	0	0	0	0	0	0	0	0	0	0
OTU60	Metazoa Platyhelminthes	0	0	0	0	0	0	0	0	0	0
OTU61	Metazoa Cnidaria Cnidaria_X Hydrozoa	0	0	0	0	123.38	0	0	0	0	0
OTU62	Metazoa Platyhelminthes	0	0	0	0	0	21.3	0	0	9.29	0
OTU64	Metazoa Arthropoda Crustacea Maxillopoda Copepoda	0	0	0	0	0	0	0	0	0	0
OTU65	Metazoa Nematoda	0	0	0	0	115.91	0	0	0	0	0
OTU66	Metazoa Arthropoda Crustacea Maxillopoda Copepoda	0	0	0	0	0	0	0	0	0	0
OTU68	Metazoa Platyhelminthes	0	126.26	0	0	0	0	0	0	0	0
OTU69	Metazoa Platyhelminthes	0	0	0	0	0	0	0	0	0	0
OTU70	Metazoa Arthropoda Crustacea Maxillopoda Copepoda	0	0	0	0	0	0	0	0	0	0
OTU71	Metazoa Platyhelminthes	0	0	0	0	0	0	0	0	0	0
OTU72	Metazoa Nematoda	0	0	0	0	0	0	0	0	0	0
OTU73	Metazoa Nematoda	0	0	0	0	0	0	0	0	0	0
OTU75	Metazoa Gastrotricha	19.28	4.15	62.25	30.31	12.03	0	0	0	0	0
OTU76	Metazoa Arthropoda Crustacea Maxillopoda Copepoda	0	0	0	0	0	0	0	0	0	0
OTU78	Metazoa Mollusca Gastropoda Heterobranchia Calliopaea Calliopaea+bellula	0	0	0	0	0	0	0	0	0	0
OTU79	Metazoa Annelida Phyllodocida Syllidae	0	0	0	0	0	0	0	0	0	0
OTU80	Metazoa Echinodermata Echinodermata_X Echinodermata_XX Leptosynapta	0	0	0	0	0	0	0	0	0	0
OTU82	Metazoa Annelida Capitellida Capitellidae Capitella	0	0	0	0	0	0	0	0	0	0
OTU84	Metazoa Annelida Capitellida Capitellidae Capitella	0	0	0	0	0	0	0	0	0	0
OTU85	Metazoa Platyhelminthes	0	0	0	0	0	0	0	0	0	0
OTU86	Metazoa Platyhelminthes	0	0	0	0	0	0	0	0	0	0
OTU87	Metazoa Annelida Terebellida Terebellidae	0	0	0	0	0	0	0	0	0	0
OTU88	Metazoa Platyhelminthes	0	0	0	0	0	0	0	0	0	0
OTU89	Metazoa Annelida Oligochaeta Tubificidae	0	0	0	0	0	0	0	0	0	0
OTU90	Metazoa Cnidaria Cnidaria_X Anthozoa Ceriantheopsis	0	0	0	0	0	0	0	0	0	0
OTU91	Metazoa Annelida Capitellida Scalibregmatidae Scalibregma Scalibregma+inflatum	0	68.74	0	0	0	0	0	0	0	0
OTU92	Metazoa Annelida Scolecida Opheliidae Ophelina	0	0	0	0	0	0	0	0	0	0
OTU93	Metazoa Gastrotricha	0	10.69	84.04	0	0	0	0	0	0	0

Supplementary Table 7. continued

OTU	assign	DNA_2_1	DNA_2_2	DNA_2_3	DNA_2_4	DNA_2_5	DNA_3_1	DNA_3_2	DNA_3_3	DNA_3_4	DNA_3_5
OTU1	Metazoa Annelida Capitellida Capitellidae Capitella	495.55	2481.66	3402.09	13.12	225.38	520.1	1145.55	3276.99	297.58	1451.73
OTU2	Metazoa Annelida Oligochaeta Tubificidae	428.87	1.09	47.74	18.3	1484.44	2669.49	1945.84	197.89	2296.95	2205.65
OTU4	Metazoa Annelida Phyllodocida Phyllodocidae Phyllodoce Phyllococe+maculata	752.49	138.57	54.94	12.97	0	264.1	171.32	213.1	242.6	135.97
OTU5	Metazoa Annelida Spionida Spionidae Malacoceros Malacoceros+fuliginosus	1938.62	458.31	0	4002.04	1003.96	0	0	11.7	2.65	6.25
OTU6	Metazoa Annelida Spionida Cirratulidae	0	0	0	0	0	0	0	348.69	752.02	33.03
OTU7	Metazoa Platyhelminthes	269.62	290.07	264.22	17.31	547.29	0	244.18	9.72	98.95	177.83
OTU8	Metazoa Annelida Phyllodocida Syllidae Salvatoria	0	0	0	0	73.5	0	0	0	169.28	0
OTU9	Metazoa Annelida	0	38.25	220.21	35.56	0	0	0	0	0	13.97
OTU10	Metazoa Nematoda	18.69	200.46	0	0	238.38	0	0	0	0	0
OTU11	Metazoa Nematoda	0	3.06	0	0	10.33	16.24	63.42	26.64	9.77	9.32
OTU12	Metazoa Nematoda	5.49	0	1.46	1.46	10.26	209.86	226.51	1.83	53.69	4
OTU13	Metazoa Cnidaria Cnidaria_X Anthozoa	0	0	101.47	0	0	111.85	0	2.5	0	0
OTU14	Metazoa Nemertea	0	0	0	0	0	0	0	0	0	0
OTU15	Metazoa Mollusca Bivalvia Heteroconchia Abra	0	0	0	0	0	0	0	0	0	42.85
OTU16	Metazoa Platyhelminthes	0	0	0	0	0	0	0	0	0	0
OTU17	Metazoa Cnidaria Cnidaria_X Hydrozoa	0	0	0	0	0	0	0	0	0	0
OTU18	Metazoa Platyhelminthes	0	64.2	0	0	0	0	11.43	0	0	3.44
OTU19	Metazoa Arthropoda Crustacea Ostracoda	0	0	0	0	0	0	0	0	0	0
OTU20	Metazoa Nematoda	2.01	0	0	0	2.59	55.56	86.34	2.4	70.03	2.53
OTU21	Metazoa Annelida Terebellida Ampharetidae	0	0	0	0	0	0	0	0	0	0
OTU22	Metazoa Annelida Phyllodocida Syllidae Exogone Exogone+naidina	0	409.99	0	0	0	0	0	0	0	0
OTU23	Metazoa Platyhelminthes	0	0	0	0	0	0	0	0	0	0
OTU24	Metazoa Platyhelminthes	158.87	0	0	0	469.99	0	0	0	0	0
OTU25	Metazoa Mollusca Bivalvia Heteroconchia Corbula	0	1.57	0	0	0	0	0	0	0	0
OTU26	Metazoa Annelida Capitellida Capitellidae Heteromastus	0	0	0	0	0	0	17.37	0	0	0

Supplementary Table 7. continued

OTU	assign	DNA_4_1	DNA_4_2	DNA_4_3	DNA_4_4	DNA_4_5	DNA_5_1	DNA_5_2	DNA_5_3	DNA_5_4	DNA_5_5
OTU1	Metazoa Annelida Capitellida Capitellidae Capitella	3076.96	8.96	158.65	0	0	849.16	19.83	3504.61	0	0
OTU2	Metazoa Annelida Oligochaeta Tubificidae	458.41	2179.98	3458.96	3002.85	1451.4	0	780.64	119.93	3600.58	1816.97
OTU4	Metazoa Annelida Phyllodocida Phyllodocidae Phyllodoce Phyllodoce+maculata	42.77	65.91	49.06	44.86	0	46.52	0	82.68	110.22	1633.71
OTU5	Metazoa Annelida Spionida Spionidae Malacoceros Malacoceros+fuliginosus	0	0	0	0	0	0	0	0	0	0
OTU6	Metazoa Annelida Spionida Cirratulidae	383.25	1628.9	365.28	774.17	779.47	2002.82	908.39	162.15	79.67	0
OTU7	Metazoa Platyhelminthes	22.58	50.26	0	39.77	0	0	52.63	0	40.6	98.78
OTU8	Metazoa Annelida Phyllodocida Syllidae Salvatoria	0	0	0	0	0	0	1038.32	0	0	0
OTU9	Metazoa Annelida	0	0	0	0	0	0	223.55	0	0	0
OTU10	Metazoa Nematoda	0	0	0	0	1694.89	0	0	0	0	106.5
OTU11	Metazoa Nematoda	6.37	73.13	0	0	0	939.89	915.86	134.33	134.87	357.67
OTU12	Metazoa Nematoda	58.95	73.32	32.98	168.06	77.9	47.26	34.05	10.36	7.66	33.63
OTU13	Metazoa Cnidaria Cnidaria_X Anthozoa	0	0	0	0	0	0	0	0	0	0
OTU14	Metazoa Nemertea	0	0	0	0	0	0	0	0	0	0
OTU15	Metazoa Mollusca Bivalvia Heteroconchia Abra	0	0	0	0	0	0	0	0	0	0
OTU16	Metazoa Platyhelminthes	0	0	0	0	0	0	0	0	0	0
OTU17	Metazoa Cnidaria Cnidaria_X Hydrozoa	1.6	0	0	0	0	10.83	0	0	0	8.93
OTU18	Metazoa Platyhelminthes	0	0	0	0	1.36	12.46	3.17	0	0	0
OTU19	Metazoa Arthropoda Crustacea Ostracoda	0	0	7.31	0	0	0	10.32	0	0	0
OTU20	Metazoa Nematoda	13.04	8.14	29.76	22.08	6.52	107.53	73.4	75.9	34.23	42.58
OTU21	Metazoa Annelida Terebellida Ampharetidae	0	0	0	0	0	0	0	0	0	0
OTU22	Metazoa Annelida Phyllodocida Syllidae Exogone Exogone+naidina	0	0	0	0	0	0	0	0	0	0
OTU23	Metazoa Platyhelminthes	0	0	0	0	0	0	0	0	0	0
OTU24	Metazoa Platyhelminthes	0	0	0	0	0	0	0	0	94.17	0
OTU25	Metazoa Mollusca Bivalvia Heteroconchia Corbula	0	0	0	0	0	0	0	0	0	0
OTU26	Metazoa Annelida Capitellida Capitellidae Heteromastus	2.74	0	0	0	2.42	11.02	0	0	0	0

OTU27	Metazoa Arthropoda Crustacea Maxillopoda Copepoda	0	0	0	0	0	0	0	0	0	0
OTU28	Metazoa Nematoda	2.24	6.24	0	15.25	1.58	71.28	19.89	3.24	0	0
OTU29	Metazoa Cnidaria Cnidaria_X Hydrozoa	0	0	0	0	0	0	0	0	0	0
OTU30	Metazoa Mollusca Gastropoda Heterobranchia Bulla	0	0	0	0	65.1	0	2.67	0	0	0
OTU31	Metazoa Platyhelminthes	0	0	0	0	0	0	0	0	0	0
OTU32	Metazoa Arthropoda Crustacea Ostracoda	0	0	0	0	0	0	0	0	0	0
OTU33	Metazoa Nemertea	0	0	0	0	0	0	0	0	0	0
OTU35	Metazoa Nemertea	0	0	0	0	0	0	0	0	0	0
OTU36	Metazoa Arthropoda Chelicerata	4.13	0	0	0	0	0	1.79	0	0	0
OTU37	Metazoa Annelida Phyllodocida Syllidae Erinaceusyllis Erinaceusyllis+cryptica	0	0	0	0	0	0	0	0	0	0
OTU38	Metazoa Platyhelminthes	0	0	0	0	0	0	0	0	0	0
OTU39	Metazoa Arthropoda Crustacea Maxillopoda Copepoda	0	0	0	0	0	0	0	0	0	0
OTU40	Metazoa Annelida Capitellida Maldanidae Praxillella	0	0	0	0	0	0	0	0	0	0
OTU41	Metazoa Arthropoda Crustacea Maxillopoda Copepoda	0	0	0	0	0	0	0	0	0	0
OTU42	Metazoa Annelida Phyllodocida Syllidae Exogone Exogone+naidina	0	0	0	0	0	0	0	0	0	0
OTU43	Metazoa Hemichordata	0	0	0	0	0	0	0	0	0	0
OTU44	Metazoa Cnidaria Cnidaria_X Hydrozoa	0	0	0	0	0	0	0	0	0	0
OTU45	Metazoa Mollusca Bivalvia Protobranchia Nucula	0	0	0	0	0	0	0	0	0	0
OTU46	Metazoa Annelida Capitellida Capitellidae Capitella	0	0	0	0	0	0	0	0	0	0
OTU47	Metazoa Platyhelminthes	0	0	0	0	0	0	0	0	0	0
OTU48	Metazoa Platyhelminthes	0	0	0	0	0	0	0	0	0	0
OTU49	Metazoa Platyhelminthes	0	0	0	0	0	0	0	0	0	0
OTU51	Metazoa Nematoda	0	0	0	0	0	0	0	0	0	3.23
OTU52	Metazoa Annelida Capitellida Maldanidae	0	0	0	0	0	0	0	0	0	0
OTU53	Metazoa Nematoda	0	0	0	0	0	0	0	0	0	0
OTU54	Metazoa Annelida Oligochaeta Tubificidae	2.01	1.95	0	0	0	0	1.06	0	0	0
OTU55	Metazoa Platyhelminthes	0	0	0	0	0	0	0	0	0	0
OTU56	Metazoa Platyhelminthes	0	0	0	0	0	0	0	0	0	0
OTU58	Metazoa Nematoda	3.7	0	0	6.19	3.22	0	3.5	0	0	0

OTU162	Metazoa Annelida Capitellida Capitellidae Capitella	0	0	0	0	0	0	0	0	0	0
OTU163	Metazoa Nematoda	0	0	0	0	0	0	0	0	0	0
OTU164	Metazoa Nematoda	0	0	0	0	0	0	0	0	0	0
OTU165	Metazoa Nematoda	0	0	0	0	0	0	0	0	0	0
OTU167	Metazoa Nematoda	0	0	0	0	0	0	0	0	0	0
OTU168	Metazoa Cnidaria Cnidaria_X Hydrozoa	0	0	0	0	0	0	0	0	0	0
OTU169	Metazoa Arthropoda Crustacea Maxillopoda Copepoda	0	0	0	0	0	0	0	0	0	0
OTU170	Metazoa Gastrotricha	0	0	0	0	0	0	0	0	0	0
OTU171	Metazoa Annelida Phyllodocida Syllidae	0	0	0	0	0	0	0	0	0	0
OTU173	Metazoa Nematoda	0	0	0	0	0	0	0	0	0	0
OTU174	Metazoa Arthropoda Crustacea Maxillopoda Copepoda	0	0	0	0	0	0	0	0	0	0
OTU175	Metazoa Arthropoda Crustacea Maxillopoda Copepoda	0	0	0	0	0	0	0	0	0	0
OTU176	Metazoa Platyhelminthes	0	0	0	0	0	0	0	0	0	0
OTU178	Metazoa Nematoda	0	0	0	3.08	0	0	0	0	0	0
OTU180	Metazoa Nematoda	0	0	0	0	0	0	0	0	0	0
OTU183	Metazoa Annelida Oligochaeta Tubificidae	0	0	0	0	0	0	0	0	0	0
OTU184	Metazoa Nematoda	0	0	0	0	0	0	0	0	0	0
OTU186	Metazoa Platyhelminthes	0	0	0	0	0	0	0	0	0	0
OTU188	Metazoa Annelida Terebellida Ampharetidae	0	0	0	0	0	0	0	0	0	0
OTU190	Metazoa Annelida Terebellida Terebellidae	0	0	0	0	0	0	0	0	0	0
OTU191	Metazoa Annelida Phyllodocida Syllidae	0	0	0	0	0	0	0	0	0	0
OTU192	Metazoa Annelida Spionida Cirratulidae	0	0	0	0	0	0	2.42	0	0	0

OTU59	Metazoa Echinodermata Echinodermata_X Echinodermata_XX Amphiura	0	0	0	0	0	0	0	0	420.52	0
OTU60	Metazoa Platyhelminthes	0	0	0	0	0	0	0	0	0	0
OTU61	Metazoa Cnidaria Cnidaria_X Hydrozoa	0	0	0	0	0	0	0	0	8.49	0
OTU62	Metazoa Platyhelminthes	0	0	0	0	0	0	0	0	0	0
OTU64	Metazoa Arthropoda Crustacea Maxillopoda Copepoda	0	0	0	0	0	0	0	0	0	0
OTU65	Metazoa Nematoda	0	0	0	0	0	0	0	0	0	0
OTU66	Metazoa Arthropoda Crustacea Maxillopoda Copepoda	0	0	0	0	0	0	0	0	0	0
OTU68	Metazoa Platyhelminthes	0	0	0	0	0	0	30.65	0	0	0
OTU69	Metazoa Platyhelminthes	84.96	0	0	0	0	0	0	0	0	0
OTU70	Metazoa Arthropoda Crustacea Maxillopoda Copepoda	0	0	0	0	0	0	0	0	0	0
OTU71	Metazoa Platyhelminthes	0	0	0	0	0	0	0	0	0	0
OTU72	Metazoa Nematoda	0	0	0	0	0	0	0	0	0	0
OTU73	Metazoa Nematoda	4.09	35.96	4.91	0	4.13	0	0	0	0	0
OTU75	Metazoa Gastrotricha	0	0	0	0	0	0	0	0	0	0
OTU76	Metazoa Arthropoda Crustacea Maxillopoda Copepoda	0	0	0	0	0	0	2.79	0	0	0
OTU78	Metazoa Mollusca Gastropoda Heterobranchia Calliopaea Calliopaea+bellula	0	0	0	0	0	0	0	0	0	0
OTU79	Metazoa Annelida Phyllodocida Syllidae	0	0	0	0	0	0	0	0	0	0
OTU80	Metazoa Echinodermata Echinodermata_X Echinodermata_XX Leptosynapta	0	0	0	0	0	0	0	0	0	0
OTU82	Metazoa Annelida Capitellida Capitellidae Capitella	0	0	0	0	0	0	0	0	0	0
OTU84	Metazoa Annelida Capitellida Capitellidae Capitella	0	0	0	0	0	0	0	0	0	0
OTU85	Metazoa Platyhelminthes	0	0	0	0	0	0	0	0	0	0
OTU86	Metazoa Platyhelminthes	0	0	0	0	0	0	0	0	0	0
OTU87	Metazoa Annelida Terebellida Terebellidae	0	0	0	0	0	167.71	0	0	0	0
OTU88	Metazoa Platyhelminthes	0	0	0	0	0	0	0	0	0	0
OTU89	Metazoa Annelida Oligochaeta Tubificidae	0	0	0	0	0	0	0	0	0	0
OTU90	Metazoa Cnidaria Cnidaria_X Anthozoa Ceriantheopsis	0	0	0	0	0	0	0	0	0	0
OTU91	Metazoa Annelida Capitellida Scalibregmatidae Scalibregma Scalibregma+inflatum	0	0	0	0	0	0	0	0	12.57	0
OTU92	Metazoa Annelida Scolecida Opheliidae Ophelina	0	0	0	0	0	0	0	0	0	0
OTU93	Metazoa Gastrotricha	0	0	0	0	0	0	0	14.41	0	0

OTU162	Metazoa Annelida Capitellida Capitellidae Capitella	0	0	0	0	0	0	0	0	0	0
OTU163	Metazoa Nematoda	0	0	0	0	0	0	0	0	0	0
OTU164	Metazoa Nematoda	0	0	0	0	0	5.72	4.01	0	0	0
OTU165	Metazoa Nematoda	0	0	0	0	0	0	0	0	0	0
OTU167	Metazoa Nematoda	0	0	0	0	0	0	0	0	0	0
OTU168	Metazoa Cnidaria Cnidaria_X Hydrozoa	0	0	0	0	0	0	0	0	0	0
OTU169	Metazoa Arthropoda Crustacea Maxillopoda Copepoda	0	0	0	0	0	0	0	0	0	0
OTU170	Metazoa Gastrotricha	0	0	0	0	0	0	0	0	0	0
OTU171	Metazoa Annelida Phyllodocida Syllidae	0	0	0	0	0	0	0	0	0	0
OTU173	Metazoa Nematoda	0	0	0	0	0	0	0	0	0	0
OTU174	Metazoa Arthropoda Crustacea Maxillopoda Copepoda	0	0	0	0	0	0	0	0	0	0
OTU175	Metazoa Arthropoda Crustacea Maxillopoda Copepoda	0	0	0	0	0	0	0	0	0	0
OTU176	Metazoa Platyhelminthes	0	0	0	0	0	0	0	0	0	0
OTU178	Metazoa Nematoda	0	0	0	0	0	0	0	0	0	0
OTU180	Metazoa Nematoda	0	0	0	0	0	0	0	0	0	0
OTU183	Metazoa Annelida Oligochaeta Tubificidae	0	0	0	0	0	0	0	0	0	0
OTU184	Metazoa Nematoda	0	0	0	0	0	0	0	0	0	0
OTU186	Metazoa Platyhelminthes	0	0	0	0	0	0	0	0	0	0
OTU188	Metazoa Annelida Terebellida Ampharetidae	0	0	0	0	0	0	0	0	0	0
OTU190	Metazoa Annelida Terebellida Terebellidae	0	0	0	0	0	5.7	0	0	0	0
OTU191	Metazoa Annelida Phyllodocida Syllidae	0	0	0	0	0	0	0	0	0	0
OTU192	Metazoa Annelida Spionida Cirratulidae	0	0	0	0	0	0	0	0	0	0

Supplementary Table 7. continued

OTU	assign	DNA_8_1	DNA_8_2	DNA_8_3	DNA_8_4	DNA_8_5	DNA_9_1	DNA_9_2	DNA_9_3	DNA_9_4	DNA_9_5
OTU1	Metazoa Annelida Capitellida Capitellidae Capitella	0	0	28.58	0	1482.61	12.79	0	0	0	0
OTU2	Metazoa Annelida Oligochaeta Tubificidae	0	0	0	0	0	0	0	0	0	0
OTU4	Metazoa Annelida Phyllodocida Phyllodoce Phyllodoce+maculata	0	0	0	2852.49	1087.12	0	0	0	0	0

OTU5	Metazoa Annelida Spionida Spionidae Malacoceros Malacoceros+fuliginosus	0	0	0	0	0	0	0	0	0	0
OTU6	Metazoa Annelida Spionida Cirratulidae	0	0	0	0	0	0	0	0	0	0
OTU7	Metazoa Platyhelminthes	339.48	0	0	24.06	655.84	0	0	749.79	0	911.79
OTU8	Metazoa Annelida Phyllodocida Syllidae Salvatoria	0	0	0	0	0	0	0	621.76	0	841.78
OTU9	Metazoa Annelida	0	2825.47	0	0	0	0	0	0	0	0
OTU10	Metazoa Nematoda	0	0	0	0	0	0	0	0	0	0
OTU11	Metazoa Nematoda	0	0	0	0	0	0	0	0	0	0
OTU12	Metazoa Nematoda	0	0	43.52	0	0	13.69	0	0	0	138.89
OTU13	Metazoa Cnidaria Cnidaria_X Anthozoa	0	0	0	0	0	0	0	0	0	0
OTU14	Metazoa Nemertea	0	0	0	620.2	0	0	0	0	0	0
OTU15	Metazoa Mollusca Bivalvia Heteroconchia Abra	0	0	0	0	0	0	0	864.96	0	0
OTU16	Metazoa Platyhelminthes	94.14	207.19	112.97	47.56	0	13.64	0	0	0	0
OTU17	Metazoa Cnidaria Cnidaria_X Hydrozoa	527.94	0	1061.25	0	270.05	156.73	831.51	0	0	0
OTU18	Metazoa Platyhelminthes	0	0	0	0	0	881.95	0	0	0	0
OTU19	Metazoa Arthropoda Crustacea Ostracoda	467.58	92.36	87.61	23.63	64.16	0	2595.9	68.16	0	138.44
OTU20	Metazoa Nematoda	0	0	0	0	0	0	0	0	0	0
OTU21	Metazoa Annelida Terebellida Ampharetidae	0	0	0	0	0	0	0	0	0	0
OTU22	Metazoa Annelida Phyllodocida Syllidae Exogone Exogone+naidina	0	0	0	0	0	0	0	0	0	0
OTU23	Metazoa Platyhelminthes	406.01	0	70.97	8.81	0	0	208.36	329.76	80.03	0
OTU24	Metazoa Platyhelminthes	0	0	0	0	0	0	0	0	0	0
OTU25	Metazoa Mollusca Bivalvia Heteroconchia Corbula	0	0	0	0	0	0	0	0	0	0
OTU26	Metazoa Annelida Capitellida Capitellidae Heteromastus	0	0	99.36	0	126.35	0	0	0	0	0
OTU27	Metazoa Arthropoda Crustacea Maxillopoda Copepoda	1426.81	763.03	990.76	206.09	415.87	540.52	163.34	1269.31	731.22	1055.14
OTU28	Metazoa Nematoda	0	0	0	0	0	0	0	0	0	0
OTU29	Metazoa Cnidaria Cnidaria_X Hydrozoa	0	130.5	1232.37	0	0	0	0	0	0	0
OTU30	Metazoa Mollusca Gastropoda Heterobranchia Bulla	0	0	115.51	0	0	0	0	0	0	0
OTU31	Metazoa Platyhelminthes	0	0	56.83	69.64	0	0	29.62	0	0	0
OTU32	Metazoa Arthropoda Crustacea Ostracoda	0	0	0	0	0	0	0	0	0	0
OTU33	Metazoa Nemertea	0	0	0	0	0	0	0	43.37	3122.16	0

OTU35	Metazoa Nemertea	0	0	0	59.42	0	0	0	0	0	0
OTU36	Metazoa Arthropoda Chelicerata	122.9	0	0	0	0	0	86.09	0	0	0
OTU37	Metazoa Annelida Phyllodocida Syllidae Erinaceusyllis Erinaceusyllis+cryptica	0	0	0	0	0	0	0	0	0	0
OTU38	Metazoa Platyhelminthes	0	0	0	0	0	0	0	0	0	0
OTU39	Metazoa Arthropoda Crustacea Maxillopoda Copepoda	0	0	0	0	0	0	0	0	0	0
OTU40	Metazoa Annelida Capitellida Maldanidae Praxillella	0	0	0	0	0	2393.93	0	0	0	0
OTU41	Metazoa Arthropoda Crustacea Maxillopoda Copepoda	0	0	0	0	0	0	0	0	0	0
OTU42	Metazoa Annelida Phyllodocida Syllidae Exogone Exogone+naidina	0	0	0	0	0	0	0	0	0	0
OTU43	Metazoa Hemichordata	0	0	0	0	0	0	0	0	0	0
OTU44	Metazoa Cnidaria Cnidaria_X Hydrozoa	0	0	0	0	0	0	86.21	0	0	0
OTU45	Metazoa Mollusca Bivalvia Protobranchia Nucula	0	0	0	145.47	0	0	0	0	0	0
OTU46	Metazoa Annelida Capitellida Capitellidae Capitella	0	0	0	0	0	0	0	0	0	0
OTU47	Metazoa Platyhelminthes	0	0	0	0	0	0	0	0	0	0
OTU48	Metazoa Platyhelminthes	0	0	0	4.74	0	0	0	0	0	0
OTU49	Metazoa Platyhelminthes	0	0	0	0	0	0	0	0	0	0
OTU51	Metazoa Nematoda	0	0	0	0	0	0	0	0	0	0
OTU52	Metazoa Annelida Capitellida Maldanidae	0	0	0	0	0	88.75	0	0	0	0
OTU53	Metazoa Nematoda	0	0	0	0	0	0	0	0	0	0
OTU54	Metazoa Annelida Oligochaeta Tubificidae	0	0	0	0	0	0	0	0	0	0
OTU55	Metazoa Platyhelminthes	0	0	0	0	0	0	0	0	0	0
OTU56	Metazoa Platyhelminthes	0	0	0	0	0	0	0	0	0	0
OTU58	Metazoa Nematoda	126.14	0	0	0	0	0	0	0	0	0
OTU59	Metazoa Echinodermata Echinodermata_X Echinodermata_XX Amphiura	0	0	0	0	0	0	0	0	0	0
OTU60	Metazoa Platyhelminthes	247.56	0	0	0	0	0	0	0	0	0
OTU61	Metazoa Cnidaria Cnidaria_X Hydrozoa	249.65	0	0	0	0	0	0	0	0	0
OTU62	Metazoa Platyhelminthes	0	0	0	0	0	0	0	0	0	0
OTU64	Metazoa Arthropoda Crustacea Maxillopoda Copepoda	0	0	0	0	0	0	0	0	0	0
OTU65	Metazoa Nematoda	0	0	0	0	0	0	0	0	0	0
OTU66	Metazoa Arthropoda Crustacea Maxillopoda Copepoda	0	0	0	0	0	0	0	66.23	34.99	0

Supplementary Table 7. continued

OTU	assign	DNA_10_1	DNA_10_2	DNA_10_3	DNA_10_4	DNA_10_5
OTU1	Metazoa Annelida Capitellida Capitellidae Capitella	61.25	0	0	0	0
OTU2	Metazoa Annelida Oligochaeta Tubificidae	0	0	0	0	0
OTU4	Metazoa Annelida Phyllodocida Phyllodocidae Phyllodoce Phyllodoce+maculata	0	0	0	0	0
OTU5	Metazoa Annelida Spionida Spionidae Malacoceros Malacoceros+fuliginosus	0	0	0	0	0
OTU6	Metazoa Annelida Spionida Cirratulidae	0	0	182.01	0	0
OTU7	Metazoa Platyhelminthes	0	546.06	0	0	0
OTU8	Metazoa Annelida Phyllodocida Syllidae Salvatoria	0	0	0	0	0
OTU9	Metazoa Annelida	2524.68	0	0	0	0
OTU10	Metazoa Nematoda	0	0	0	0	0
OTU11	Metazoa Nematoda	0	0	0	0	0
OTU12	Metazoa Nematoda	0	0	0	0	0
OTU13	Metazoa Cnidaria Cnidaria_X Anthozoa	0	0	0	0	0
OTU14	Metazoa Nemertea	0	0	0	0	0
OTU15	Metazoa Mollusca Bivalvia Heteroconchia Abra	0	0	0	0	0
OTU16	Metazoa Platyhelminthes	0	1263.45	3680.48	1615.87	240.92
OTU17	Metazoa Cnidaria Cnidaria_X Hydrozoa	0	716.09	0	2110.86	0
OTU18	Metazoa Platyhelminthes	0	0	0	0	0
OTU19	Metazoa Arthropoda Crustacea Ostracoda	0	0	0	0	0
OTU20	Metazoa Nematoda	0	0	0	0	0
OTU21	Metazoa Annelida Terebellida Ampharetidae	0	0	0	0	0
OTU22	Metazoa Annelida Phyllodocida Syllidae Exogone Exogone+naidina	0	0	0	0	0
OTU23	Metazoa Platyhelminthes	0	0	0	0	0
OTU24	Metazoa Platyhelminthes	0	0	0	0	0
OTU25	Metazoa Mollusca Bivalvia Heteroconchia Corbula	0	0	0	0	3751.12
OTU26	Metazoa Annelida Capitellida Capitellidae Heteromastus	102.59	0	0	0	0

OTU27	Metazoa Arthropoda Crustacea Maxillopoda Copepoda	0	0	0	0	0
OTU28	Metazoa Nematoda	0	0	0	0	0
OTU29	Metazoa Cnidaria Cnidaria_X Hydrozoa	0	0	0	0	0
OTU30	Metazoa Mollusca Gastropoda Heterobranchia Bulla	41.42	0	0	0	0
OTU31	Metazoa Platyhelminthes	0	0	0	0	0
OTU32	Metazoa Arthropoda Crustacea Ostracoda	0	0	0	0	0
OTU33	Metazoa Nemertea	0	0	0	0	0
OTU35	Metazoa Nemertea	0	1029.42	0	0	0
OTU36	Metazoa Arthropoda Chelicerata	0	0	0	0	0
OTU37	Metazoa Annelida Phyllodocida Syllidae Erinaceusyllis Erinaceusyllis+cryptica	0	0	0	0	0
OTU38	Metazoa Platyhelminthes	0	0	0	0	0
OTU39	Metazoa Arthropoda Crustacea Maxillopoda Copepoda	0	0	0	0	0
OTU40	Metazoa Annelida Capitellida Maldanidae Praxillella	0	0	0	0	0
OTU41	Metazoa Arthropoda Crustacea Maxillopoda Copepoda	0	0	0	0	0
OTU42	Metazoa Annelida Phyllodocida Syllidae Exogone Exogone+naidina	0	0	0	0	0
OTU43	Metazoa Hemichordata	0	0	0	0	0
OTU44	Metazoa Cnidaria Cnidaria_X Hydrozoa	672.97	0	0	0	0
OTU45	Metazoa Mollusca Bivalvia Protobranchia Nucula	0	0	0	0	0
OTU46	Metazoa Annelida Capitellida Capitellidae Capitella	0	0	0	0	0
OTU47	Metazoa Platyhelminthes	0	0	0	0	0
OTU48	Metazoa Platyhelminthes	0	0	0	0	0
OTU49	Metazoa Platyhelminthes	699.09	0	0	0	0
OTU51	Metazoa Nematoda	0	0	0	0	0
OTU52	Metazoa Annelida Capitellida Maldanidae	0	418.97	0	0	0
OTU53	Metazoa Nematoda	0	0	0	0	0
OTU54	Metazoa Annelida Oligochaeta Tubificidae	0	0	0	0	0
OTU55	Metazoa Platyhelminthes	0	0	0	0	0
OTU56	Metazoa Platyhelminthes	0	0	0	0	0
OTU58	Metazoa Nematoda	0	0	0	0	0

OTU59	Metazoa Echinodermata Echinodermata_X Echinodermata_XX Amphiura	0	0	0	0	0
OTU60	Metazoa Platyhelminthes	0	0	0	0	0
OTU61	Metazoa Cnidaria Cnidaria_X Hydrozoa	0	0	0	0	95.01
OTU62	Metazoa Platyhelminthes	0	0	0	0	0
OTU64	Metazoa Arthropoda Crustacea Maxillopoda Copepoda	0	0	0	0	0
OTU65	Metazoa Nematoda	0	0	0	0	0
OTU66	Metazoa Arthropoda Crustacea Maxillopoda Copepoda	0	0	0	0	0
OTU68	Metazoa Platyhelminthes	0	53.54	0	0	0
OTU69	Metazoa Platyhelminthes	0	0	0	0	0
OTU70	Metazoa Arthropoda Crustacea Maxillopoda Copepoda	0	0	0	0	0
OTU71	Metazoa Platyhelminthes	0	0	0	0	0
OTU72	Metazoa Nematoda	0	0	0	0	0
OTU73	Metazoa Nematoda	0	21.3	0	0	0
OTU75	Metazoa Gastrotricha	0	0	120.06	375.27	0
OTU76	Metazoa Arthropoda Crustacea Maxillopoda Copepoda	0	0	0	0	0
OTU78	Metazoa Mollusca Gastropoda Heterobranchia Calliopaea Calliopaea+bellula	0	0	0	0	0
OTU79	Metazoa Annelida Phyllodocida Syllidae	0	0	0	0	0
OTU80	Metazoa Echinodermata Echinodermata_X Echinodermata_XX Leptosynapta	0	0	0	0	0
OTU82	Metazoa Annelida Capitellida Capitellidae Capitella	0	0	0	0	0
OTU84	Metazoa Annelida Capitellida Capitellidae Capitella	0	0	0	0	0
OTU85	Metazoa Platyhelminthes	0	0	0	0	0
OTU86	Metazoa Platyhelminthes	0	0	0	0	0
OTU87	Metazoa Annelida Terebellida Terebellidae	0	0	0	0	0
OTU88	Metazoa Platyhelminthes	0	0	0	0	0
OTU89	Metazoa Annelida Oligochaeta Tubificidae	0	0	0	0	0
OTU90	Metazoa Cnidaria Cnidaria_X Anthozoa Ceriantheopsis	0	0	0	0	0
OTU91	Metazoa Annelida Capitellida Scalibregmatidae Scalibregma Scalibregma+inflatum	0	53.17	0	0	0
OTU92	Metazoa Annelida Scolecida Opheliidae Ophelina	0	0	0	0	0
OTU93	Metazoa Gastrotricha	0	0	0	0	0

OTU94	Metazoa Platyhelminthes	0	0	0	0	0
OTU95	Metazoa Arthropoda Crustacea Ostracoda	0	0	0	0	0
OTU96	Metazoa Platyhelminthes	0	0	0	0	0
OTU97	Metazoa Platyhelminthes	0	0	0	0	0
OTU98	Metazoa Platyhelminthes	0	0	0	0	0
OTU99	Metazoa Platyhelminthes	0	0	0	0	0
OTU100	Metazoa Arthropoda Crustacea Ostracoda	0	0	0	0	0
OTU101	Metazoa Annelida Phyllodocida Phyllodocidae	0	0	0	0	0
OTU102	Metazoa Arthropoda Crustacea Maxillopoda Copepoda	0	0	0	0	0
OTU103	Metazoa Nemertea	0	0	0	0	0
OTU104	Metazoa Annelida Phyllodocida Syllidae	0	0	0	0	0
OTU107	Metazoa Arthropoda Crustacea Ostracoda	0	0	0	0	0
OTU108	Metazoa Annelida Spionida Spionidae Malacoceros Malacoceros+fuliginosus	0	0	0	0	0
OTU109	Metazoa Arthropoda Crustacea Maxillopoda Copepoda	0	0	0	0	0
OTU110	Metazoa Arthropoda Crustacea Maxillopoda Copepoda	0	0	0	0	0
OTU111	Metazoa Kinorhyncha	0	0	0	0	0
OTU112	Metazoa Platyhelminthes	0	0	0	0	0
OTU113	Metazoa Nematoda	0	0	0	0	0
OTU114	Metazoa Nematoda	0	0	0	0	0
OTU115	Metazoa	0	0	0	0	14.95
OTU116	Metazoa Platyhelminthes	0	0	0	0	0
OTU117	Metazoa Nematoda	0	0	0	0	0
OTU118	Metazoa Arthropoda Crustacea Maxillopoda Copepoda	0	0	0	0	0
OTU119	Metazoa Nematoda	0	0	0	0	0
OTU120	Metazoa Platyhelminthes	0	0	0	0	0
OTU121	Metazoa Nematoda	0	0	0	0	0
OTU122	Metazoa Annelida Oligochaeta Tubificidae	0	0	0	0	0
OTU123	Metazoa Mollusca Bivalvia Heteroconchia Myrtea Myrtea+spinifera	0	0	0	0	0
OTU124	Metazoa Annelida Terebellida Pectinariidae Pectinaria	0	0	0	0	0

OTU125	Metazoa Platyhelminthes	0	0	0	0	0
OTU126	Metazoa Nematoda	0	0	0	0	0
OTU128	Metazoa Kinorhyncha	0	0	0	0	0
OTU130	Metazoa Annelida Phyllodocida Phyllodocidae	0	0	0	0	0
OTU131	Metazoa Annelida Oligochaeta Tubificidae	0	0	0	0	0
OTU132	Metazoa Nematoda	0	0	0	0	0
OTU134	Metazoa Annelida Phyllodocida Syllidae	0	0	0	0	0
OTU135	Metazoa Annelida Capitellida Capitellidae Capitella	0	0	0	0	0
OTU136	Metazoa Nematoda	0	0	0	0	0
OTU137	Metazoa Hemichordata	0	0	0	0	0
OTU138	Metazoa	0	0	0	0	0
OTU141	Metazoa Nematoda	0	0	0	0	0
OTU143	Metazoa Annelida Capitellida Capitellidae Capitella	0	0	0	0	0
OTU144	Metazoa Platyhelminthes	0	0	0	0	0
OTU145	Metazoa Annelida Spionida Spionidae Malacoceros Malacoceros+fuliginosus	0	0	0	0	0
OTU146	Metazoa Arthropoda Crustacea Maxillopoda Copepoda	0	0	0	0	0
OTU147	Metazoa Porifera	0	0	0	0	0
OTU149	Metazoa Mollusca Bivalvia Heteroconchia Macoma Macoma+nasuta	0	0	0	0	0
OTU151	Metazoa Nematoda	0	0	0	0	0
OTU152	Metazoa Platyhelminthes	0	0	0	0	0
OTU153	Metazoa Annelida Phyllodocida Phyllodocidae	0	0	0	0	0
OTU154	Metazoa Annelida Spionida Cirratulidae	0	0	0	0	0
OTU155	Metazoa Annelida Spionida Cirratulidae	0	0	0	0	0
OTU156	Metazoa Arthropoda Crustacea Maxillopoda Copepoda	0	0	0	0	0
OTU157	Metazoa Annelida Phyllodocida Phyllodocidae	0	0	0	0	0
OTU158	Metazoa Annelida Phyllodocida Phyllodocidae	0	0	0	0	0
OTU159	Metazoa Rotifera	0	0	0	0	0
OTU160	Metazoa Arthropoda Crustacea Maxillopoda Copepoda	0	0	0	0	0
OTU161	Metazoa Platyhelminthes	0	0	0	0	0

OTU162	Metazoa Annelida Capitellida Capitellidae Capitella	0	0	0	0	0
OTU163	Metazoa Nematoda	0	0	0	0	0
OTU164	Metazoa Nematoda	0	0	0	0	0
OTU165	Metazoa Nematoda	0	0	0	0	0
OTU167	Metazoa Nematoda	0	0	0	0	0
OTU168	Metazoa Cnidaria Cnidaria_X Hydrozoa	0	0	0	0	0
OTU169	Metazoa Arthropoda Crustacea Maxillopoda Copepoda	0	0	0	0	0
OTU170	Metazoa Gastrotricha	0	0	0	0	0
OTU171	Metazoa Annelida Phyllodocida Syllidae	0	0	0	0	0
OTU173	Metazoa Nematoda	0	0	0	0	0
OTU174	Metazoa Arthropoda Crustacea Maxillopoda Copepoda	0	0	0	0	0
OTU175	Metazoa Arthropoda Crustacea Maxillopoda Copepoda	0	0	0	0	0
OTU176	Metazoa Platyhelminthes	0	0	0	0	0
OTU178	Metazoa Nematoda	0	0	0	0	0
OTU180	Metazoa Nematoda	0	0	0	0	0
OTU183	Metazoa Annelida Oligochaeta Tubificidae	0	0	0	0	0
OTU184	Metazoa Nematoda	0	0	119.45	0	0
OTU186	Metazoa Platyhelminthes	0	0	0	0	0
OTU188	Metazoa Annelida Terebellida Ampharetidae	0	0	0	0	0
OTU190	Metazoa Annelida Terebellida Terebellidae	0	0	0	0	0
OTU191	Metazoa Annelida Phyllodocida Syllidae	0	0	0	0	0
OTU192	Metazoa Annelida Spionida Cirratulidae	0	0	0	0	0