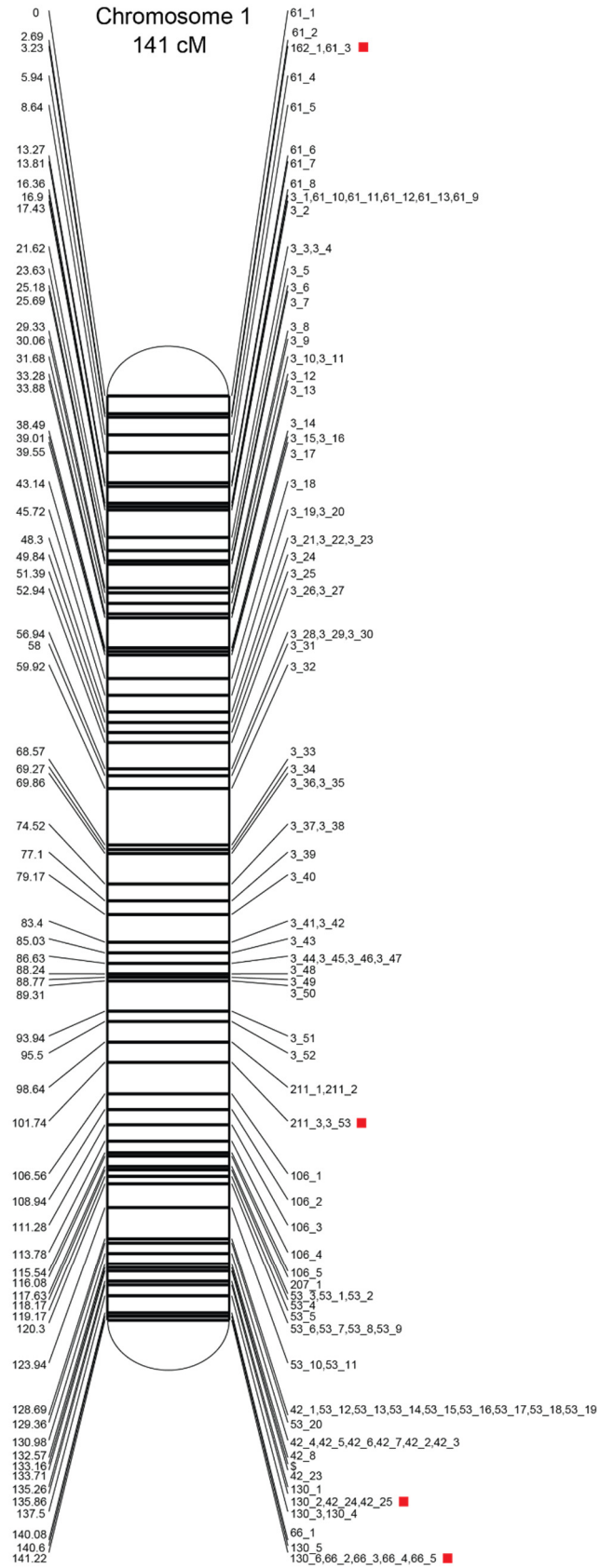


Supplementary Figure

Figure S1 The male genetic linkage map based on 1672 haplotype blocks derived from 104 single sperm genomes. The map distance for each block is on the left hand side of each linkage group, whereas the marker name is listed on the right hand side, with the number before the underscore designating the scaffold and the number after representing a randomly assigned ranking number (see supplementary data). The red squares next to marker names indicate possibly mis-assembled genomic regions in the *Daphnia arenata* reference genome. Some map positions consist of many haplotype blocks and these blocks are shown in the top left corner.

S: 42_9,42_10,42_11,42_12,42_13,42_14,42_15,42_16,
42_17,42_18,42_19,42_20,42_21,42_22

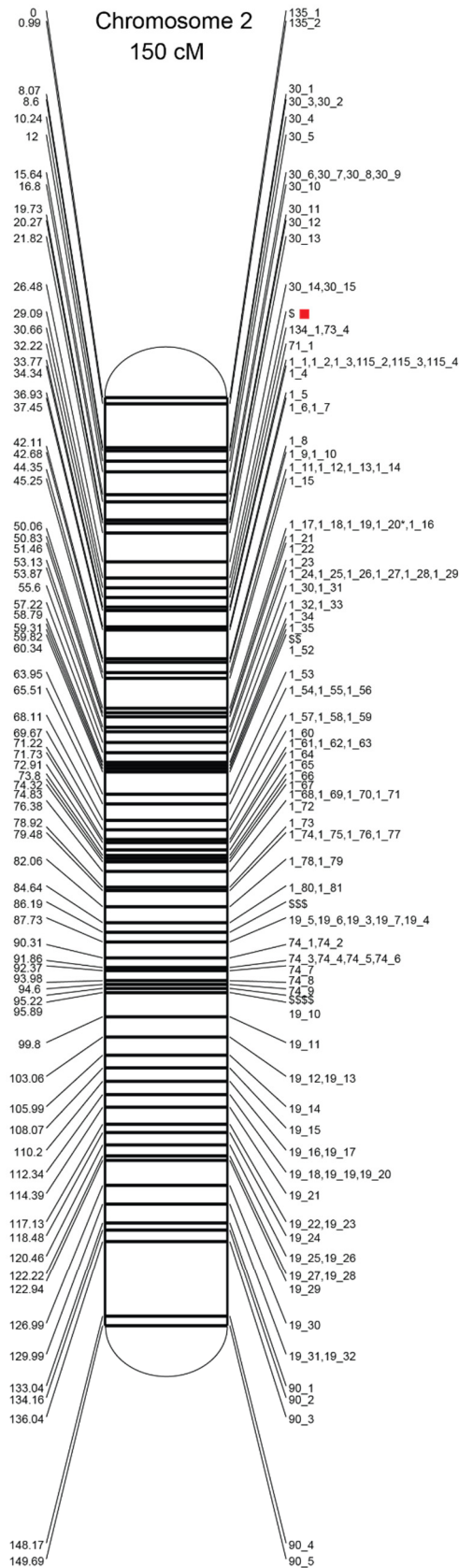


S: 112_1,113_1,115_1,148_1,170_1,206_1,217_1,228_1,
237_1,237_2,266_1,30_16,45_1,45_2,73_1,73_2,73_3,
78_3,78_4,78_1,78_2

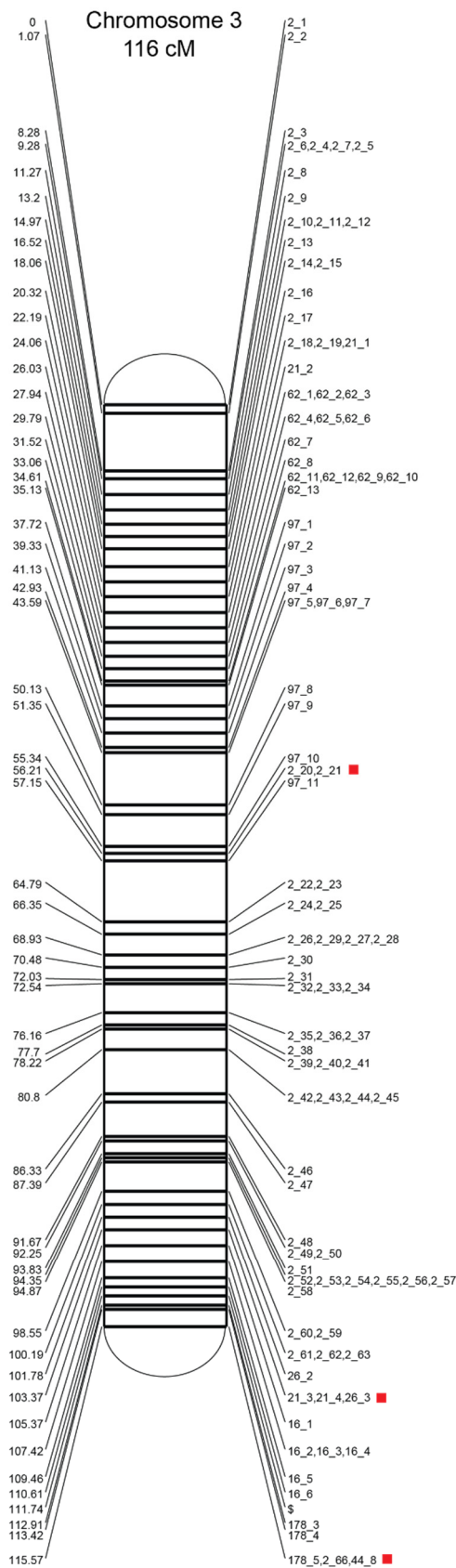
SS: 1_36,1_37,1_38,1_39,1_40,1_41,1_42,1_43,1_44,
1_45,1_46,1_47,1_48,1_49,1_50,1_51

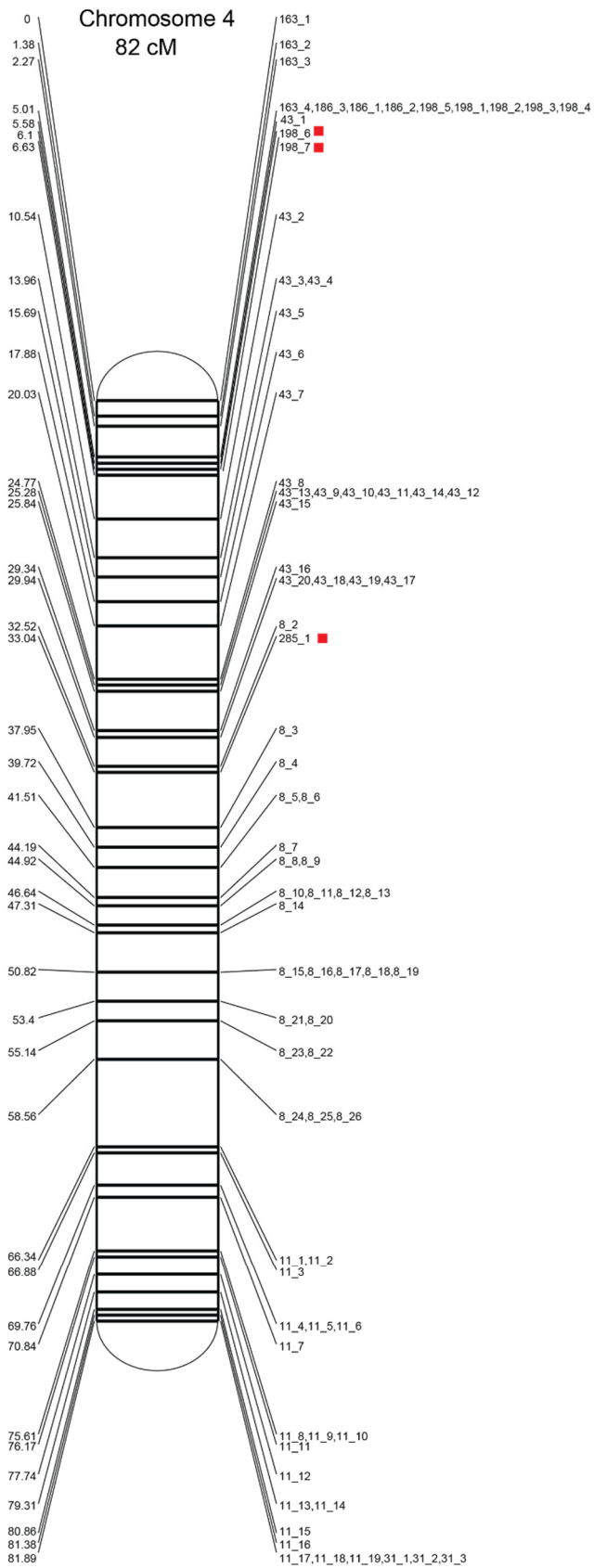
SSS: 1_83,1_84,1_85,1_86,1_87,1_88,1_89,1_90,1_91,
1_92,1_93,1_94,1_95,1_96,1_97,1_82,19_1,19_2

SSSS: 19_8,19_9,74_14,74_15,74_16,74_17,74_18,
74_19,74_20,74_21,74_11,74_12,74_13,74_10



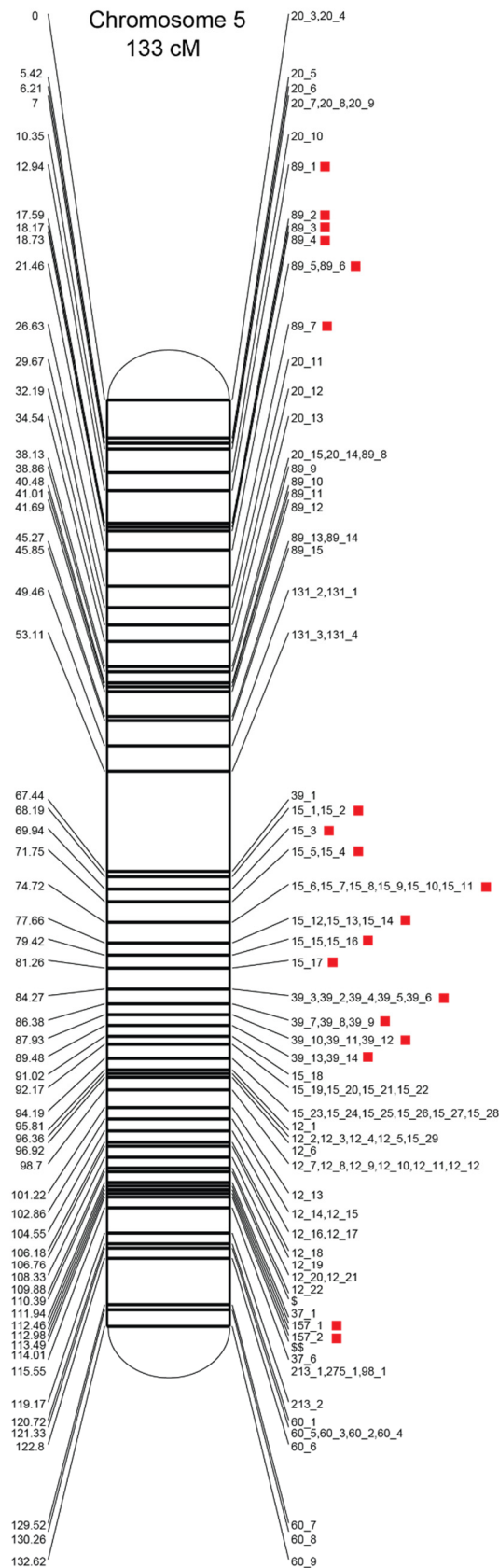
S: 114_1,114_3,114_4,114_2,117_1,155_1,164_2,164_1,
 174_1,178_2,178_1,189_1,2_64,2_65,21_5,21_6,21_7,
 21_8,21_9,21_10,21_11,21_12,21_13,21_14,221_1,
 238_1,26_5,26_6,26_7,26_8,26_9,26_10,26_11,26_12,
 26_13,26_4,26_14,33_3,33_4,44_2,44_3,44_1,44_4,44_5,
 44_6,44_7



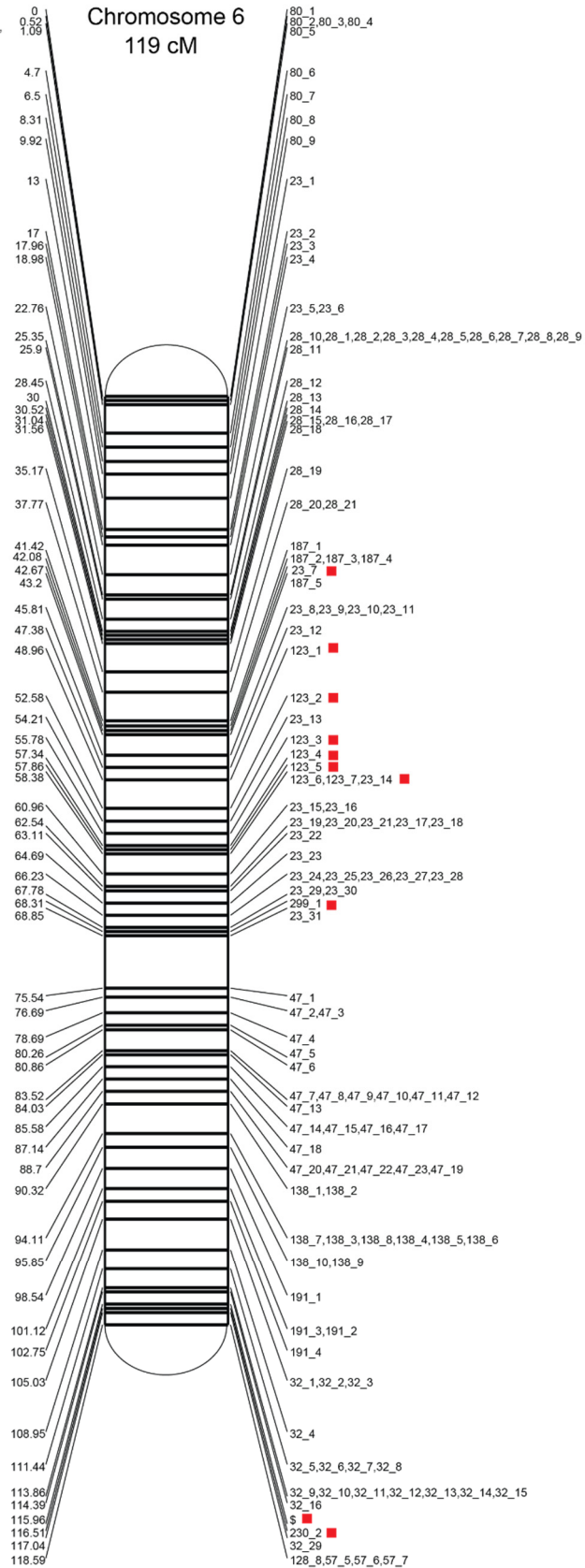


S: 12_23,12_24,12_25,12_26,12_27,12_28,160_1,38_1,
38_2,38_3,38_4,38_5,38_6,38_7,38_8,38_9,38_10,
38_11

SS: 125_1,125_2,125_3,157_4,157_3,272_1,307_1,331_1,
331_2,37_2,37_3,37_4,37_5,40_8,40_9,40_10,49_8

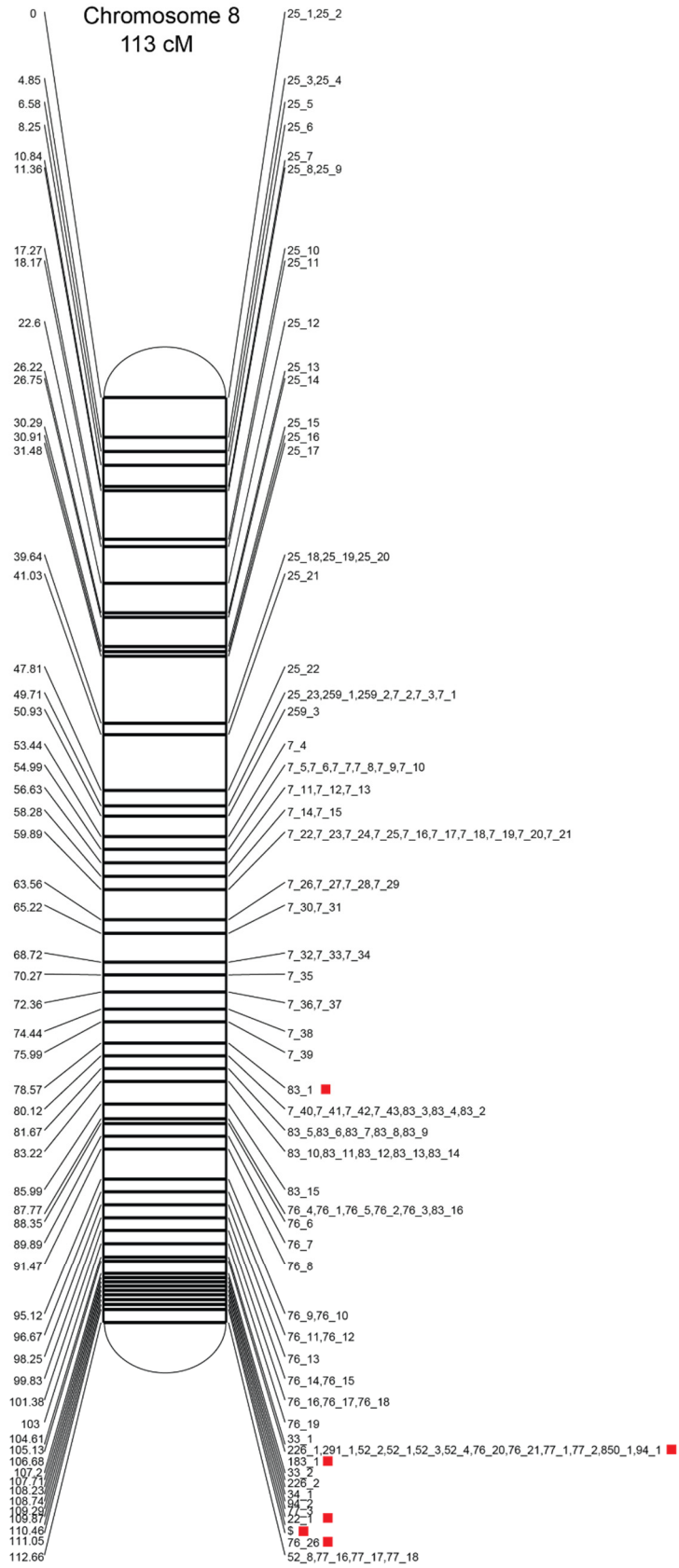


S: 128_3,128_4,128_5,128_6,128_7,128_1,128_2,230_1,32_27,
 32_28,32_17,32_18,32_19,32_20,32_21,32_22,32_23,32_24,32_25,
 32_26,45_4,45_3,57_3,57_4,92_2,92_1,92_3,92_4

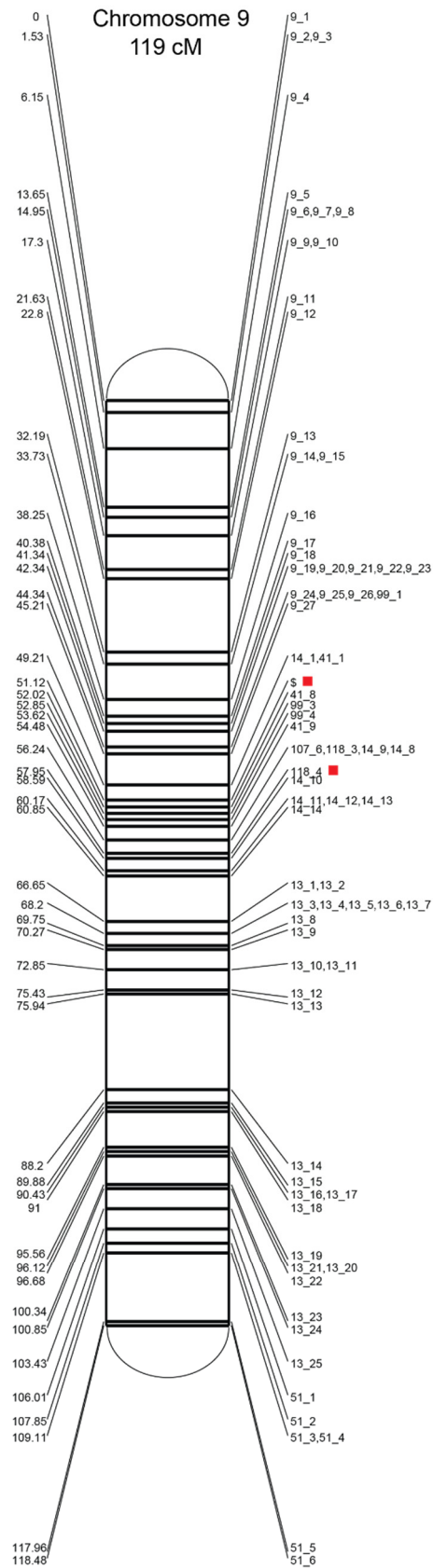


S: 101_1,101_2,101_3,101_4,133_2,133_3,133_4,133_1,
 190_1,190_2,40_3,40_4,40_5,40_6,40_1,40_2,48_2,48_1,
 48_3,48_4,48_5,48_6,48_7,54_1,54_2,54_3,54_4,55_2,
 55_3,55_4,55_5,55_6,55_7,68_1,68_2,68_3,68_4,68_5,
 68_6,68_7,68_8,68_9,68_10,68_11,68_12,68_13,68_14,68_15,
 68_16,68_17,68_18,68_19,68_20,68_21,68_22,68_23,68_24,
 68_25,68_26,68_27,68_28,68_29,68_30,68_31,68_32,68_33,
 68_34,68_35,68_36,68_37,68_38,68_39,68_40,68_41,68_42,
 68_43,68_44,68_45,68_46,68_47,68_48,68_49,68_50,
 68_51,68_52,68_53,68_54,68_55,68_56,68_57,68_58,68_59,
 68_60,68_61,68_62,68_63,68_64,68_65,68_66,68_67,68_68,
 68_69,68_70,68_71,68_72,68_73,68_74,68_75,68_76,
 68_77,68_78,68_79,68_80,68_81,68_82,68_83,68_84,
 68_85,68_86,68_87,68_88,68_89,68_90,68_91,68_92,
 68_93,68_94,68_95,68_96,68_97,68_98,68_99,68_100,
 68_101,68_102,68_103,68_104,68_105,68_106,68_107,
 68_108,68_109,68_110,68_111,68_112,68_113,68_114,
 68_115,68_116,68_117,68_118,68_119,68_120,
 68_121,68_122,68_123,68_124,68_125,68_126,68_127,
 68_128,68_129,68_130,68_131,68_132,68_133,68_134,
 68_135,68_136,68_137,68_138,68_139,68_140,68_141,
 68_142,68_143,68_144,68_145,68_146,68_147,68_148,
 68_149,68_150,68_151,68_152,68_153,68_154,68_155,
 68_156,68_157,68_158,68_159,68_160,68_161,68_162,
 68_163,68_164,68_165,68_166,68_167,68_168,68_169,
 68_170,68_171,68_172,68_173,68_174,68_175,68_176,
 68_177,68_178,68_179,68_180,68_181,68_182,68_183,
 68_184,68_185,68_186,68_187,68_188,68_189,68_190,
 68_191,68_192,68_193,68_194,68_195,68_196,68_197,
 68_198,68_199,68_200,68_201,68_202,68_203,68_204,
 68_205,68_206,68_207,68_208,68_209,68_210,68_211,
 68_212,68_213,68_214,68_215,68_216,68_217,68_218,
 68_219,68_220,68_221,68_222,68_223,68_224,68_225,
 68_226,68_227,68_228,68_229,68_230,68_231,68_232,
 68_233,68_234,68_235,68_236,68_237,68_238,68_239,
 68_240,68_241,68_242,68_243,68_244,68_245,68_246,
 68_247,68_248,68_249,68_250,68_251,68_252,68_253,
 68_254,68_255,68_256,68_257,68_258,68_259,68_260,
 68_261,68_262,68_263,68_264,68_265,68_266,68_267,
 68_268,68_269,68_270,68_271,68_272,68_273,68_274,
 68_275,68_276,68_277,68_278,68_279,68_280,68_281,
 68_282,68_283,68_284,68_285,68_286,68_287,68_288,
 68_289,68_290,68_291,68_292,68_293,68_294,68_295,
 68_296,68_297,68_298,68_299,68_300,68_301,68_302,
 68_303,68_304,68_305,68_306,68_307,68_308,68_309,
 68_310,68_311,68_312,68_313,68_314,68_315,68_316,
 68_317,68_318,68_319,68_320,68_321,68_322,68_323,
 68_324,68_325,68_326,68_327,68_328,68_329,68_330,
 68_331,68_332,68_333,68_334,68_335,68_336,68_337,
 68_338,68_339,68_340,68_341,68_342,68_343,68_344,
 68_345,68_346,68_347,68_348,68_349,68_350,68_351,
 68_352,68_353,68_354,68_355,68_356,68_357,68_358,
 68_359,68_360,68_361,68_362,68_363,68_364,68_365,
 68_366,68_367,68_368,68_369,68_370,68_371,68_372,
 68_373,68_374,68_375,68_376,68_377,68_378,68_379,
 68_380,68_381,68_382,68_383,68_384,68_385,68_386,
 68_387,68_388,68_389,68_390,68_391,68_392,68_393,
 68_394,68_395,68_396,68_397,68_398,68_399,68_400,
 68_401,68_402,68_403,68_404,68_405,68_406,68_407,
 68_408,68_409,68_410,68_411,68_412,68_413,68_414,
 68_415,68_416,68_417,68_418,68_419,68_420,68_421,
 68_422,68_423,68_424,68_425,68_426,68_427,68_428,
 68_429,68_430,68_431,68_432,68_433,68_434,68_435,
 68_436,68_437,68_438,68_439,68_440,68_441,68_442,
 68_443,68_444,68_445,68_446,68_447,68_448,68_449,
 68_450,68_451,68_452,68_453,68_454,68_455,68_456,
 68_457,68_458,68_459,68_460,68_461,68_462,68_463,
 68_464,68_465,68_466,68_467,68_468,68_469,68_470,
 68_471,68_472,68_473,68_474,68_475,68_476,68_477,
 68_478,68_479,68_480,68_481,68_482,68_483,68_484,
 68_485,68_486,68_487,68_488,68_489,68_490,68_491,
 68_492,68_493,68_494,68_495,68_496,68_497,68_498,
 68_499,68_500,68_501,68_502,68_503,68_504,68_505,
 68_506,68_507,68_508,68_509,68_510,68_511,68_512,
 68_513,68_514,68_515,68_516,68_517,68_518,68_519,
 68_520,68_521,68_522,68_523,68_524,68_525,68_526,
 68_527,68_528,68_529,68_530,68_531,68_532,68_533,
 68_534,68_535,68_536,68_537,68_538,68_539,68_540,
 68_541,68_542,68_543,68_544,68_545,68_546,68_547,
 68_548,68_549,68_550,68_551,68_552,68_553,68_554,
 68_555,68_556,68_557,68_558,68_559,68_560,68_561,
 68_562,68_563,68_564,68_565,68_566,68_567,68_568,
 68_569,68_570,68_571,68_572,68_573,68_574,68_575,
 68_576,68_577,68_578,68_579,68_580,68_581,68_582,
 68_583,68_584,68_585,68_586,68_587,68_588,68_589,
 68_590,68_591,68_592,68_593,68_594,68_595,68_596,
 68_597,68_598,68_599,68_600,68_601,68_602,68_603,
 68_604,68_605,68_606,68_607,68_608,68_609,68_610,
 68_611,68_612,68_613,68_614,68_615,68_616,68_617,
 68_618,68_619,68_620,68_621,68_622,68_623,68_624,
 68_625,68_626,68_627,68_628,68_629,68_630,68_631,
 68_632,68_633,68_634,68_635,68_636,68_637,68_638,
 68_639,68_640,68_641,68_642,68_643,68_644,68_645,
 68_646,68_647,68_648,68_649,68_650,68_651,68_652,
 68_653,68_654,68_655,68_656,68_657,68_658,68_659,
 68_660,68_661,68_662,68_663,68_664,68_665,68_666,
 68_667,68_668,68_669,68_670,68_671,68_672,68_673,
 68_674,68_675,68_676,68_677,68_678,68_679,68_680,
 68_681,68_682,68_683,68_684,68_685,68_686,68_687,
 68_688,68_689,68_690,68_691,68_692,68_693,68_694,
 68_695,68_696,68_697,68_698,68_699,68_700,68_701,
 68_702,68_703,68_704,68_705,68_706,68_707,68_708,
 68_709,68_710,68_711,68_712,68_713,68_714,68_715,
 68_716,68_717,68_718,68_719,68_720,68_721,68_722,
 68_723,68_724,68_725,68_726,68_727,68_728,68_729,
 68_730,68_731,68_732,68_733,68_734,68_735,68_736,
 68_737,68_738,68_739,68_740,68_741,68_742,68_743,
 68_744,68_745,68_746,68_747,68_748,68_749,68_750,
 68_751,68_752,68_753,68_754,68_755,68_756,68_757,
 68_758,68_759,68_760,68_761,68_762,68_763,68_764,
 68_765,68_766,68_767,68_768,68_769,68_770,68_771,
 68_772,68_773,68_774,68_775,68_776,68_777,68_778,
 68_779,68_780,68_781,68_782,68_783,68_784,68_785,
 68_786,68_787,68_788,68_789,68_790,68_791,68_792,
 68_793,68_794,68_795,68_796,68_797,68_798,68_799,
 68_800,68_801,68_802,68_803,68_804,68_805,68_806,
 68_807,68_808,68_809,68_810,68_811,68_812,68_813,
 68_814,68_815,68_816,68_817,68_818,68_819,68_820,
 68_821,68_822,68_823,68_824,68_825,68_826,68_827,
 68_828,68_829,68_830,68_831,68_832,68_833,68_834,
 68_835,68_836,68_837,68_838,68_839,68_840,68_841,
 68_842,68_843,68_844,68_845,68_846,68_847,68_848,
 68_849,68_850,68_851,68_852,68_853,68_854,68_855,
 68_856,68_857,68_858,68_859,68_860,68_861,68_862,
 68_863,68_864,68_865,68_866,68_867,68_868,68_869,
 68_870,68_871,68_872,68_873,68_874,68_875,68_876,
 68_877,68_878,68_879,68_880,68_881,68_882,68_883,
 68_884,68_885,68_886,68_887,68_888,68_889,68_890,
 68_891,68_892,68_893,68_894,68_895,68_896,68_897,
 68_898,68_899,68_900,68_901,68_902,68_903,68_904,
 68_905,68_906,68_907,68_908,68_909,68_910,68_911,
 68_912,68_913,68_914,68_915,68_916,68_917,68_918,
 68_919,68_920,68_921,68_922,68_923,68_924,68_925,
 68_926,68_927,68_928,68_929,68_930,68_931,68_932,
 68_933,68_934,68_935,68_936,68_937,68_938,68_939,
 68_940,68_941,68_942,68_943,68_944,68_945,68_946,
 68_947,68_948,68_949,68_950,68_951,68_952,68_953,
 68_954,68_955,68_956,68_957,68_958,68_959,68_960,
 68_961,68_962,68_963,68_964,68_965,68_966,68_967,
 68_968,68_969,68_970,68_971,68_972,68_973,68_974,
 68_975,68_976,68_977,68_978,68_979,68_980,68_981,
 68_982,68_983,68_984,68_985,68_986,68_987,68_988,
 68_989,68_990,68_991,68_992,68_993,68_994,68_995,
 68_996,68_997,68_998,68_999,68_1000,68_1001,68_1002,
 68_1003,68_1004,68_1005,68_1006,68_1007,68_1008,
 68_1009,68_1010,68_1011,68_1012,68_1013,68_1014,
 68_1015,68_1016,68_1017,68_1018,68_1019,68_1020,
 68_1021,68_1022,68_1023,68_1024,68_1025,68_1026,
 68_1027,68_1028,68_1029,68_1030,68_1031,68_1032,
 68_1033,68_1034,68_1035,68_1036,68_1037,68_1038,
 68_1039,68_1040,68_1041,68_1042,68_1043,68_1044,
 68_1045,68_1046,68_1047,68_1048,68_1049,68_1050,
 68_1051,68_1052,68_1053,68_1054,68_1055,68_1056,
 68_1057,68_1058,68_1059,68_1060,68_1061,68_1062,
 68_1063,68_1064,68_1065,68_1066,68_1067,68_1068,
 68_1069,68_1070,68_1071,68_1072,68_1073,68_1074,
 68_1075,68_1076,68_1077,68_1078,68_1079,68_1080,
 68_1081,68_1082,68_1083,68_1084,68_1085,68_1086,
 68_1087,68_1088,68_1089,68_1090,68_1091,68_1092,
 68_1093,68_1094,68_1095,68_1096,68_1097,68_1098,
 68_1099,68_1100,68_1101,68_1102,68_1103,68_1104,
 68_1105,68_1106,68_1107,68_1108,68_1109,68_1110,
 68_1111,68_1112,68_1113,68_1114,68_1115,68_1116,
 68_1117,68_1118,68_1119,68_1120,68_1121,68_1122,
 68_1123,68_1124,68_1125,68_1126,68_1127,68_1128,
 68_1129,68_1130,68_1131,68_1132,68_1133,68_1134,
 68_1135,68_1136,68_1137,68_1138,68_1139,68_1140,
 68_1141,68_1142,68_1143,68_1144,68_1145,68_1146,
 68_1147,68_1148,68_1149,68_1150,68_1151,68_1152,
 68_1153,68_1154,68_1155,68_1156,68_1157,68_1158,
 68_1159,68_1160,68_1161,68_1162,68_1163,68_1164,
 68_1165,68_1166,68_1167,68_1168,68_1169,68_1170,
 68_1171,68_1172,68_1173,68_1174,68_1175,68_1176,
 68_1177,68_1178,68_1179,68_1180,68_1181,68_1182,
 68_1183,68_1184,68_1185,68_1186,68_1187,68_1188,
 68_1189,68_1190,68_1191,68_1192,68_1193,68_1194,
 68_1195,68_1196,68_1197,68_1198,68_1199,68_1200,
 68_1201,68_1202,68_1203,68_1204,68_1205,68_1206,
 68_1207,68_1208,68_1209,68_1210,68_1211,68_1212,
 68_1213,68_1214,68_1215,68_1216,68_1217,68_1218,
 68_1219,68_1220,68_1221,68_1222,68_1223,68_1224,
 68_1225,68_1226,68_1227,68_1228,68_1229,68_1230,
 68_1231,68_1232,68_1233,68_1234,68_1235,68_1236,
 68_1237,68_1238,68_1239,68_1240,68_1241,68_1242,
 68_1243,68_1244,68_1245,68_1246,68_1247,68_1248,
 68_1249,68_1250,68_1251,68_1252,68_1253,68_1254,
 68_1255,68_1256,68_1257,68_1258,68_1259,68_1260,
 68_1261,68_1262,68_1263,68_1264,68_1265,68_1266,
 68_1267,68_1268,68_1269,68_1270,68_1271,68_1272,
 68_1273,68_1274,68_1275,68_1276,68_1277,68_1278,
 68_1279,68_1280,68_1281,68_1282,68_1283,68_1284,
 68_1285,68_1286,68_1287,68_1288,68_1289,68_1290,
 68_1291,68_1292,68_1293,68_1294,68_1295,68_1296,
 68_1297,68_1298,68_1299,68_1300,68_1301,68_1302,
 68_1303,68_1304,68_1305,68_1306,68_1307,68_1308,
 68_1309,68_1310,68_1311,68_1312,68_1313,68_1314,
 68_1315,68_1316,68_1317,68_1318,68_1319,68_1320,
 68_1321,68_1322,68_1323,68_1324,68_1325,68_1326,
 68_1327,68_1328,68_1329,68_1330,68_1331,68_1332,
 68_1333,68_1334,68_1335,68_1336,68_1337,68_1338,
 68_1339,68_1340,68_1341,68_1342,68_1343,68_1344,
 68_1345,68_1346,68_1347,68_1348,68_1349,68_1350,
 68_1351,68_1352,68_1353,68_1354,68_1355,68_1356,
 68_1357,68_1358,68_1359,68_1360,68_1361,68_1362,
 68_1363,68_1364,68_1365,68_1366,68_1367,68_1368,
 68_1369,68_1370,68_1371,68_1372,68_1373,68_1374,
 68_1375,68_1376,68_1377,68_1378,68_1379,68_1380,
 68_1381,68_1382,68_1383,68_1384,68_1385,68_1386,
 68_1387,68_1388,68_1389,68_1390,68_1391,68_1392,
 68_1393,68_1394,68_1395,68_1396,68_1397,68_1398,
 68_1399,68_1400,68_1401,68_1402,68_1403,68_1404,
 68_1405,68_1406,68_1407,68_1408,68_1409,68_1410,
 68_1411,68_1412,68_1413,68_1414,68_1415,68_1416,
 68_1417,68_1418,68_1419,68_1420,68_1421,68_1422,
 68_1423,68_1424,68_1425,68_1426,68_1427,68_1428,
 68_1429,68_1430,68_1431,68_1432,68_1433,68_1434,
 68_1435,68_1436,68_1437,68_1438,68_1439,68_1440,
 68_1441,68_1442,68_1443,68_1444,68_1445,68_1446,
 68_1447,68_1448,68_1449,68_1450,68_1451,68_1452,
 68_1453,68_1454,68_1455,68_1456,68_1457,68_1458,
 68_1459,68_1460,68_1461,68_1462,68_1463,68_1464,
 68_1465,68_1466,68_1467,68_1468,68_1469,68_1470,
 68_1471,68_1472,68_1473,68_1474,68_1475,68_1476,
 68_1477,68_1478,68_1479,68_1480,68_1481,68_1482,
 68_1483,68_1484,68_1485,68_1486,68_1487,68_1488,
 68_1489,68_1490,68_1491,68_1492,68_1493,68_1494,
 68_1495,68_1496,68_1497,68_1498,68_1499,68_1500,
 68_1501,68_1502,68_1503,68_1504,68_1505,68_1506,
 68_1507,68_1508,68_1509,68_1510,68_1511,68_1512,
 68_1513,68_1514,68_1515,68_1516,68_1517,

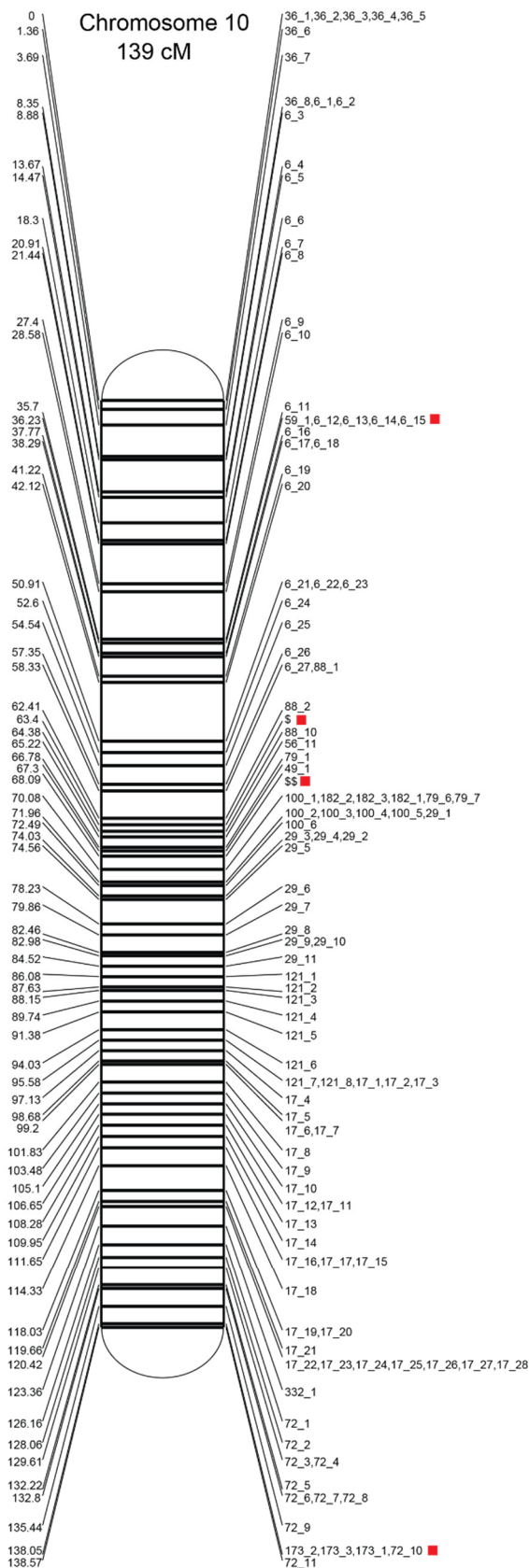
S: 109_1,109_2,128_1,169_2,169_3,169_1,199_1,199_2,20_2,
 20_1,22_2,22_3,22_4,226_5,226_3,226_4,247_1,291_2,34_2,
 52_6,52_5,52_7,57_1,57_2,76_23,76_24,76_25,77_4,
 77_5,77_6,77_7,77_8,77_9,77_10,77_11,77_12,77_13,77_14,
 77_15,94_3,94_4,94_5

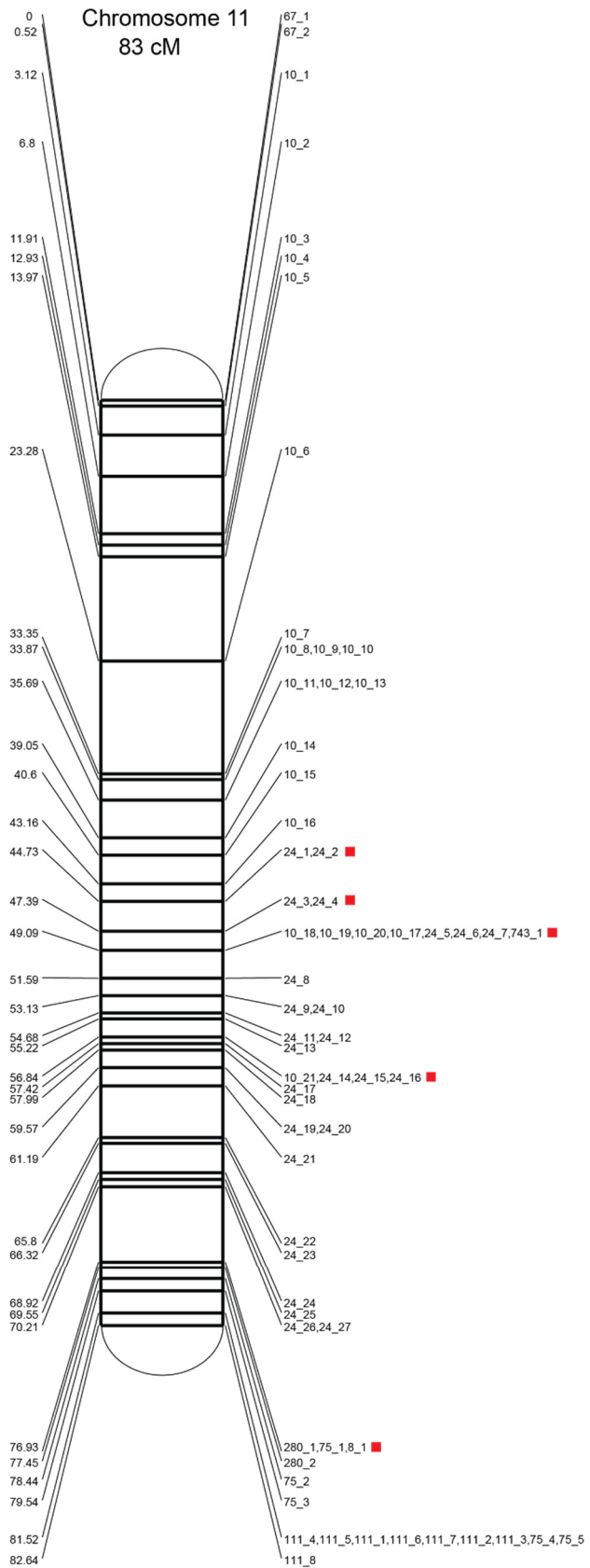


\$: 104_1,107_2,107_3,107_4,107_5,107_1,118_1,118_2,
 139_1,14_7,14_2,14_3,14_4,14_5,14_6,172_1,
 289_1,41_2,41_3,41_4,41_5,41_6,41_7,95_1,95_2,
 99_2



\$: 102_2,102_1,103_1,103_2,152_1,152_2,35_2,
 35_3,35_4,35_1,35_5,35_6,35_7,56_2,56_3,
 56_4,56_5,56_6,56_7,56_8,56_9,56_10,56_1,
 88_6,88_7,88_8,88_9,88_4,88_5
 \$\$: 105_1,120_1,176_1,223_2,223_1,26_1,49_4,49_5,
 49_6,49_7,49_2,49_3,64_1,64_2,64_3,64_4,64_5,64_6,
 65_1,79_2,79_3,79_4,79_5





S: 146_2,146_3,146_1,158_1,158_2,161_2,161_3,161_1,
 27_6,27_2,27_3,27_4,27_5,58_7,58_8,58_9,58_5,58_6,
 59_4,59_5,59_6,59_7,63_14,84_2,84_1

