

1 **Supplementary Information**

2

3

4 Amino Acid Polymorphisms in Hepatitis C Virus Core Affect Infectious Virus

5 Production and Major Histocompatibility Complex Class I Molecule Expression

6

7 Megumi Tasaka-Fujita, Nao Sugiyama, Wonseok Kang, Takahiro Masaski,

8 Asako Murayama, Norie Yamada, Ryuichi Sugiyama, Senko Tsukuda,

9 Koichi Watashi, Yasuhiro Asahina, Naoya Sakamoto, Takaji Wakita,

10 Eui-Cheol Shin, Takanobu Kato.

11

1

2 **Supplementary Figure S1.** Time point analysis of HCV-positive cell population  
3 and MFI of core staining

4 Huh-7.5.1 cells were transfected with RNA of TH/JFH1-RL, -RM, -QL,  
5 and -QM. Transfected cells were harvested at the indicated time point and  
6 stained with anti-HCV core antibody. The percentages of HCV core-positive cells  
7 were determined. The MFI of HCV core in the gate of core-positive cells was  
8 calculated and is presented in Supplementary Table S1.

9

10 **Supplementary Figure S2.** Cell surface expression of MHC class I molecules  
11 induced by type I and II IFNs.

12 Huh-7.5.1 cells were treated with IFN- $\alpha$  (10 IU/mL), IFN- $\beta$  (10 IU/mL)  
13 and IFN- $\gamma$  (200 pg/mL) for 24 h. Harvested cells were stained with anti-HLA-ABC  
14 antibody. The shaded areas indicate IFN untreated control.

15

1 Supplementary Table S1.

2 IFN sensitivity of chimeric viruses with polymorphisms

Strains	HCV core Ag levels	
	IFN (-)	IFN (+)
TH/JFH1-RL		
Medium (fmol/L)	$9.0 \times 10^4 \pm 7.4 \times 10^3$	$1.1 \times 10^4 \pm 5.6 \times 10^2$
Cell (fmol/well)	$127.4 \pm 23.5$	$22.6 \pm 2.0$
TH/JFH1-RM		
Medium (fmol/L)	$1.0 \times 10^5 \pm 7.2 \times 10^3$	$1.3 \times 10^4 \pm 2.4 \times 10^3$
Cell (fmol/well)	$195.3 \pm 32.6$	$27.4 \pm 7.1$
TH/JFH1-QL		
Medium (fmol/L)	$1.5 \times 10^4 \pm 1.3 \times 10^3$	$1.8 \times 10^3 \pm 3.1 \times 10^2$
Cell (fmol/well)	$94.5 \pm 3.0$	$20.0 \pm 3.0$
TH/JFH1-QM		
Medium (fmol/L)	$9.0 \times 10^4 \pm 7.4 \times 10^3$	$1.1 \times 10^4 \pm 5.6 \times 10^2$
Cell (fmol/well)	$164.5 \pm 11.0$	$35.7 \pm 6.1$

3

4

1 Supplementary Table S2.

2 Percentage of HCV-positive cells and amounts of core protein

Strains	Positive Cells (%)	MFI
TH/JFH1-RL		
Day 1	26.9 ± 0.4	93.8 ± 0.8
Day 2	39.1 ± 0.6	147.3 ± 1.5
Day 3	52.3 ± 0.5	204.0 ± 6.1
TH/JFH1-RM		
Day 1	27.0 ± 1.2	80.8 ± 1.7
Day 2	40.3 ± 2.0	136.7 ± 0.6
Day 3	49.4 ± 0.7	215.3 ± 2.5
TH/JFH1-QL		
Day 1	25.6 ± 0.9	94.3 ± 1.1
Day 2	37.8 ± 2.4	180.3 ± 5.5*
Day 3	29.7 ± 0.9*	329.0 ± 6.1*
TH/JFH1-QM		
Day 1	26.2 ± 0.8	98.8 ± 2.1
Day 2	34.6 ± 1.9*	186.0 ± 1.0*
Day 3	29.4 ± 0.2*	300.7 ± 11.5*

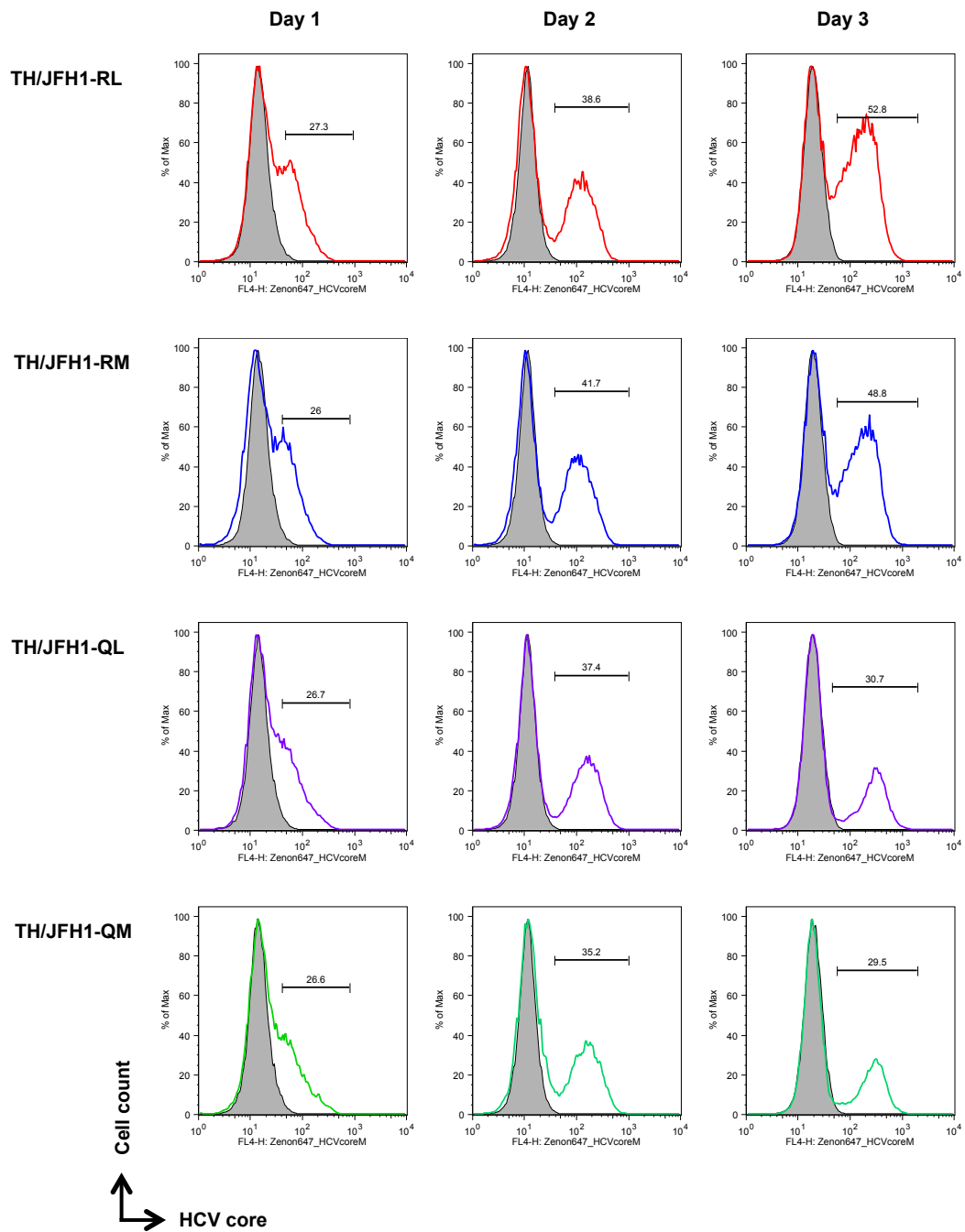
3 MFI, mean fluorescence intensity. \* $p < 0.05$  compared with aa70R strains.

4

5

6

# Supplementary Figure S1



## Supplementary Figure S2

