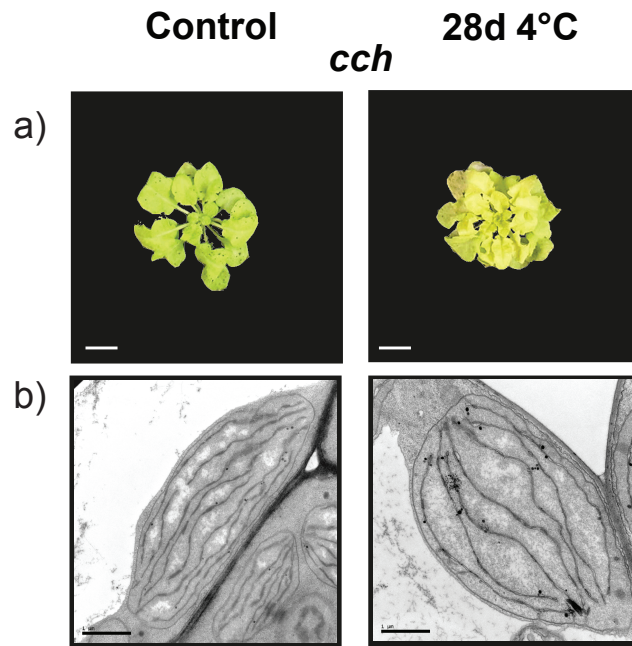


# S1 Fig



**S1 Fig. The *cch* mutant show enhanced phenotype after long term low temperature exposure.**

(a) 5 week old *cch* plants grown in short day condition (9/15 h light/dark, 22°C/18°C, 150  $\mu$ E, control conditions) were transferred to 4°C, short day condition (9/15 h light/dark, 4°C/4°C, 150  $\mu$ E) for 28 days. Bar represents 1 cm.

(b) Transmission electron microscopy (TEM) images of plastids from corresponding plants above. Bar represents 1  $\mu$ m.