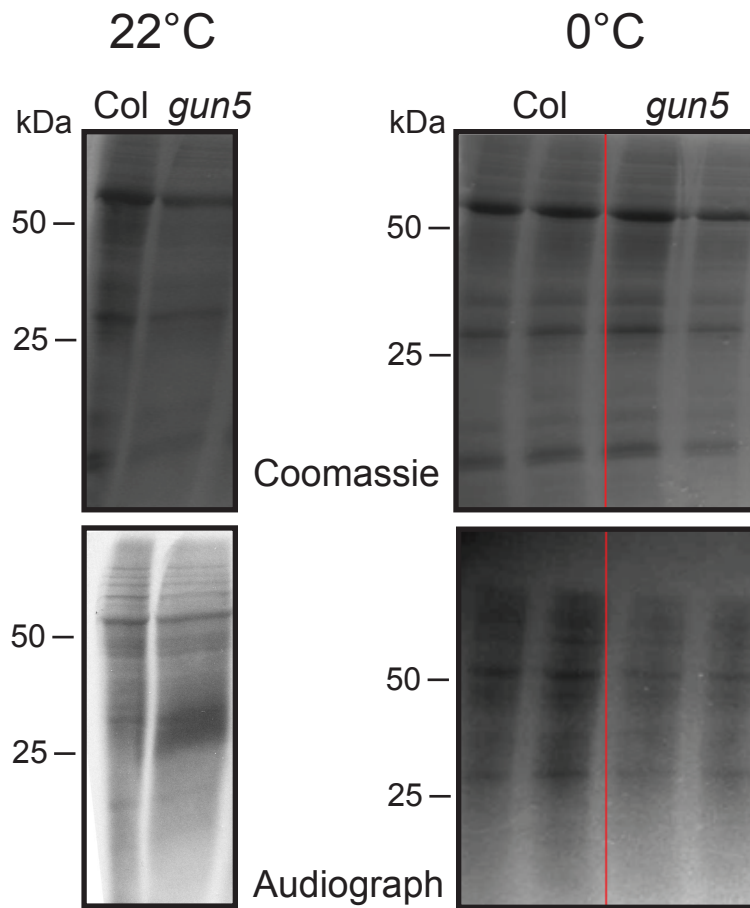


S3 Fig



S3 Fig. Gel images of the ³⁵S experiment.

3 week old plants were grown at SD conditions, 22°C, pretreated at 0°C for 4 days and labelled with [³⁵S]Met and [³⁵S]Cys. The plants were then transferred to either 22°C or 0°C for 36 hours. Plants were briefly rinsed with water and total proteins were extracted and run on a SDS-PAGE. The gel was stained (top panels), dried, exposed to an X-ray film and developed (bottom panels).