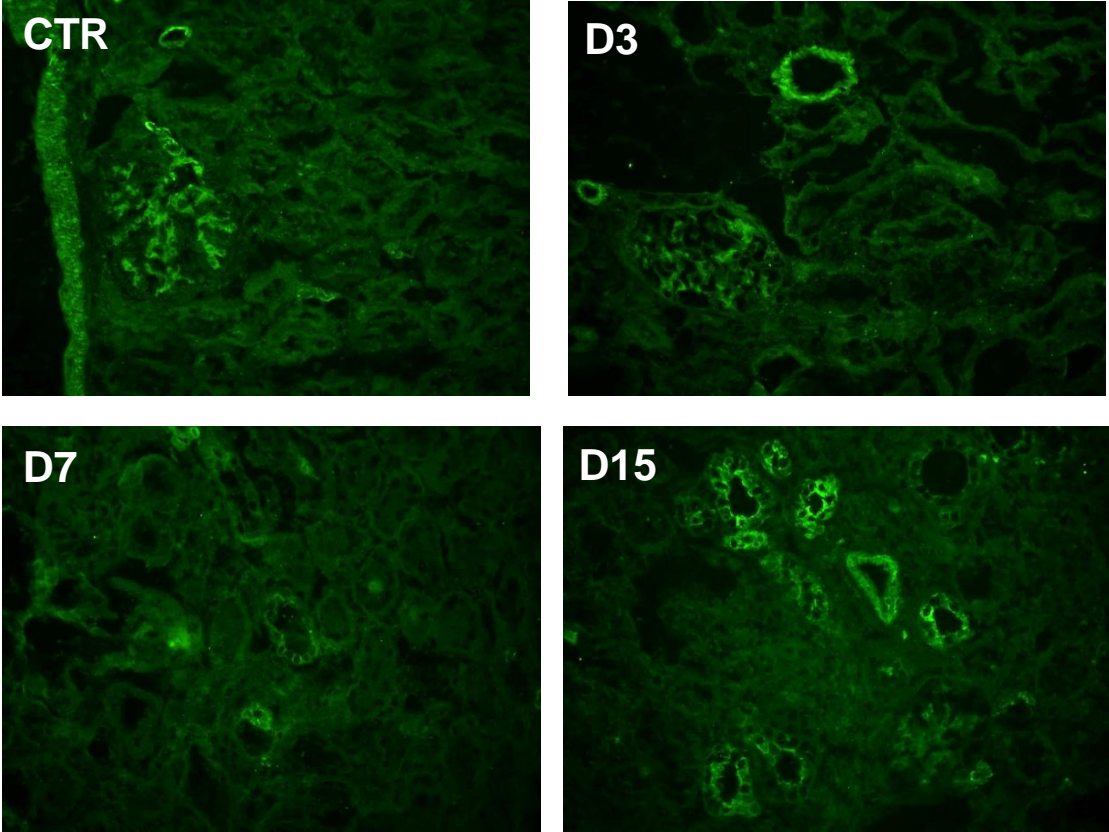
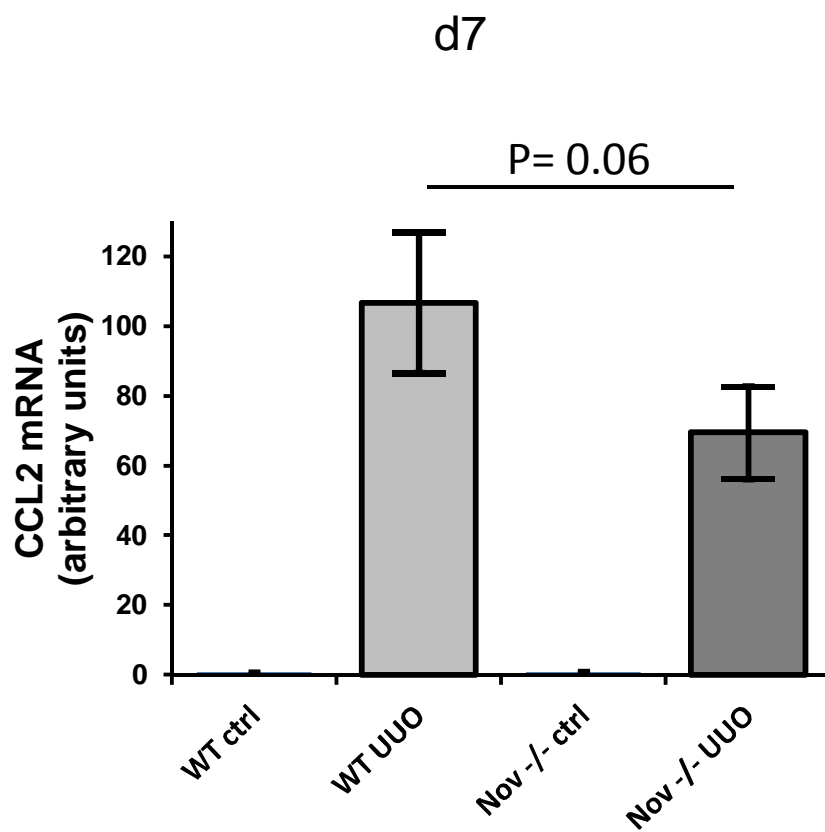


**Figure A. Progressive increase in NOV expression in mice after UUU.**

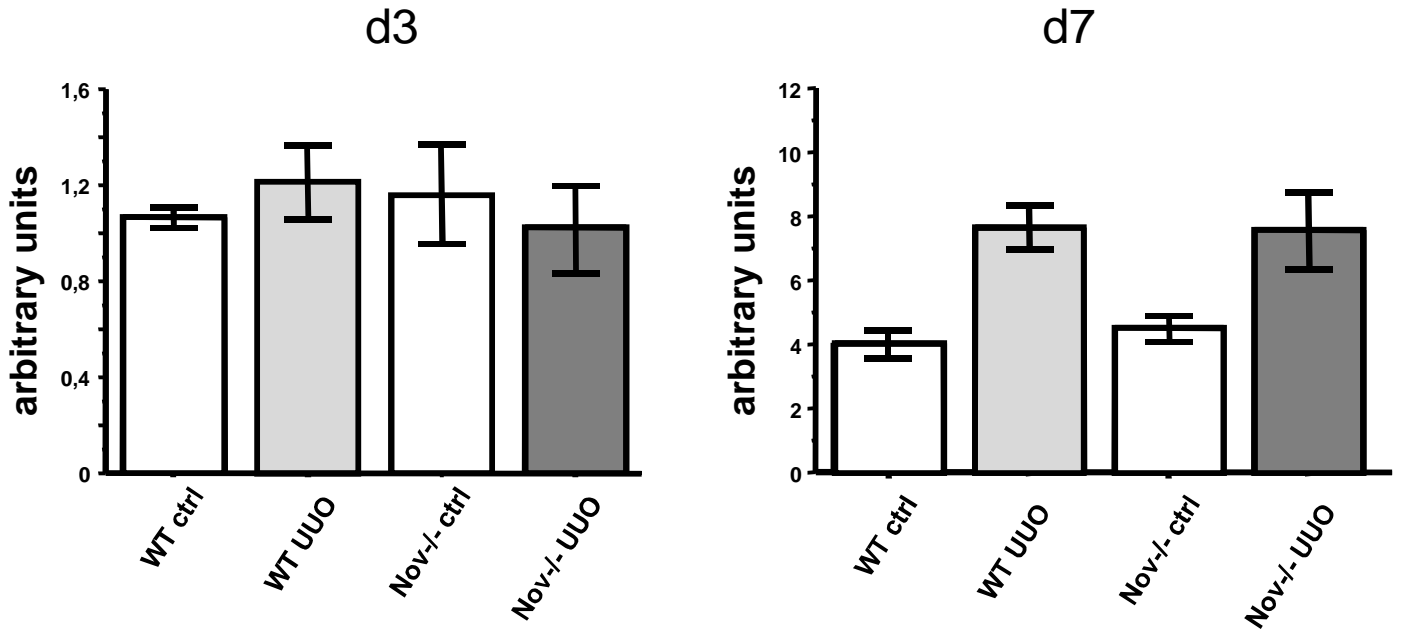


**Figure B. mRNA expression of CCL2 in mice after 7 days of UUO.**



**Figure C. mRNA expression of CTGF in mice after UUU.**

**CTGF mRNA**



**Supplementary figure legends.**

**Fig A. Progressive increase in NOV expression in mice after UUO.**

NOV immunostainings (green) were performed on cryosections from renal cortical slides of controls and mice after 3, 6 and 15 days of UUO. In basal conditions NOV expression was detected in the glomerular and vascular compartments. NOV was de novo expressed in the renal tubules from 6 days of obstructive nephropathy. Photographs are representative of kidneys from 6 mice at each time point in both groups. Magnification of microphotographs: X400.

**Fig B. mRNA expression of CCL2 in mice after 7 days of UUO.**

qPCR showed that CCL2 mRNA expression in NOV<sup>-/-</sup> and WT mice in basal conditions and 7 days of UUO. Values are expressed as mean  $\pm$  SEM, n=6 (triplicates).

**Fig C. mRNA expression of CTGF in mice after UUO.**

qPCR showed that CTGF mRNA expression was not found to be different between NOV<sup>-/-</sup> and WT mice in basal conditions or after 3 and 7 days of UUO. Values are expressed as mean  $\pm$  SEM, n=6 (triplicates), \* P<0.05, \*\*P<0.01, \*\*\*P<0.001).