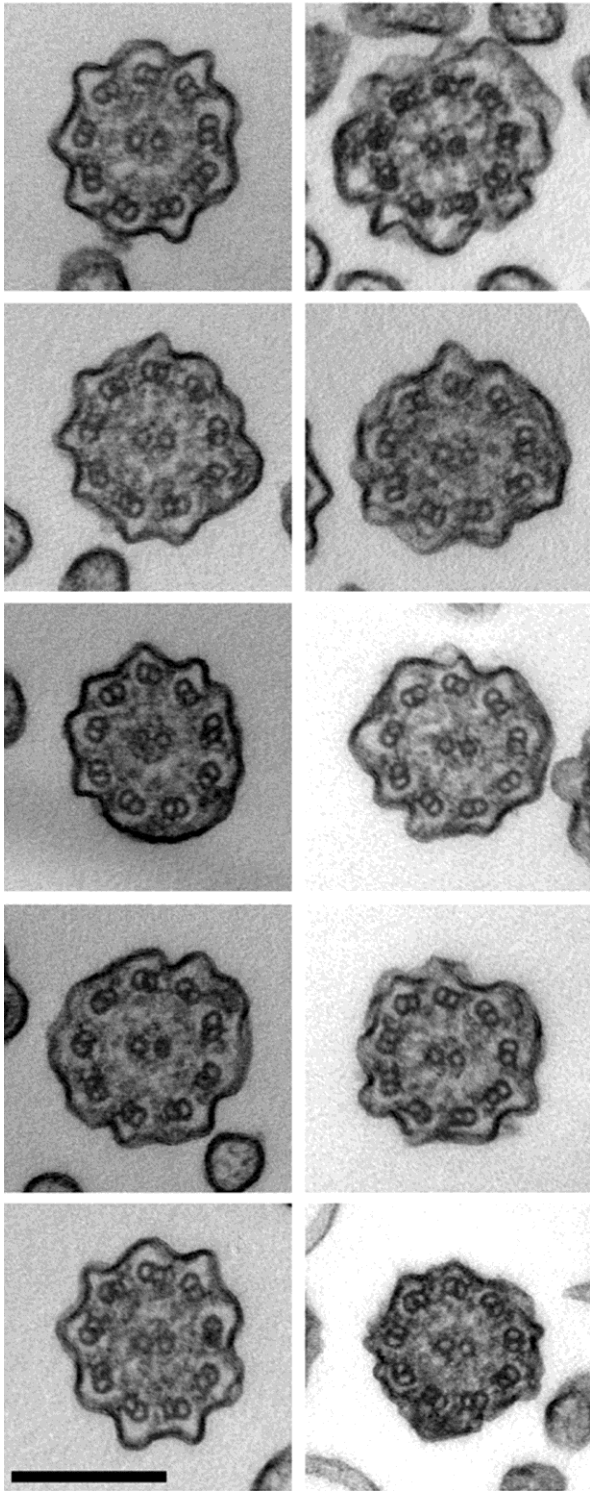
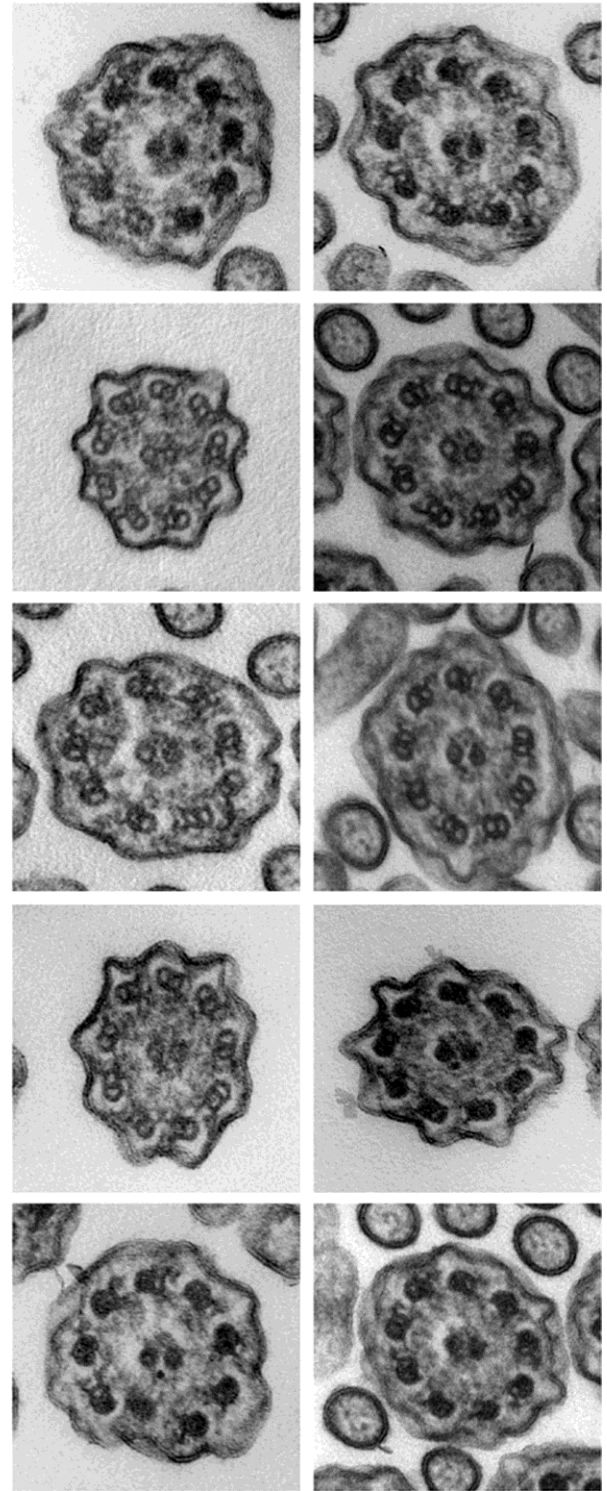


Supplemental Materials

Molecular Biology of the Cell

McKenzie et al.

A**WT****B*****Cfap54*^{gt/gt}**

Supplemental Figure 1. Ciliary cross-sections comprising overlays. The ten individual representative transmission electron micrographs from WT (A) and *Cfap54*^{gt/gt} (B) mice were used to generate the overlays shown in Figure 6E and Figure 6F, respectively. In all images, the C1 central microtubule is on the left, and lack of the C1d projection is evident in all mutant axonemes (B). The scale bar indicates 200 nm.