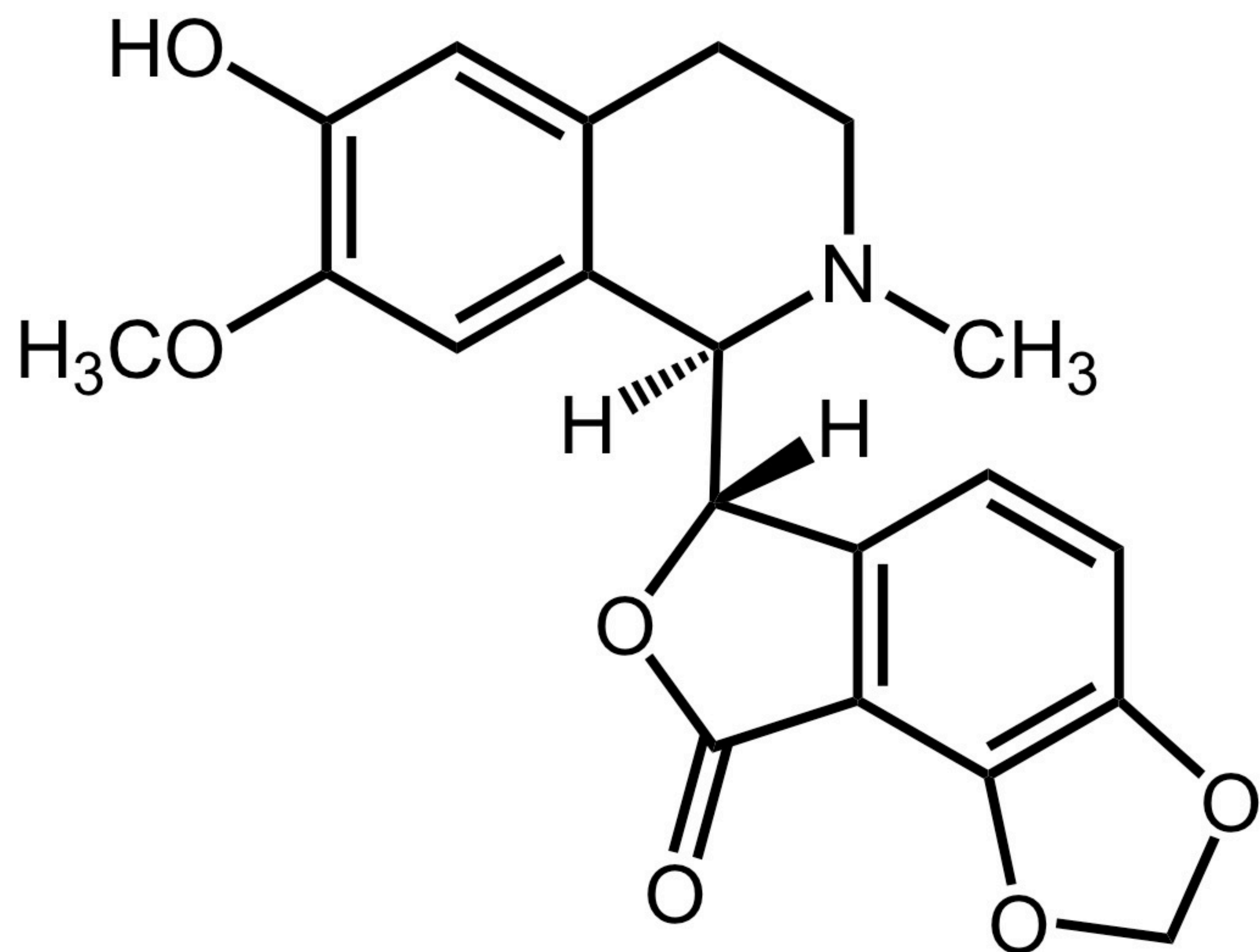
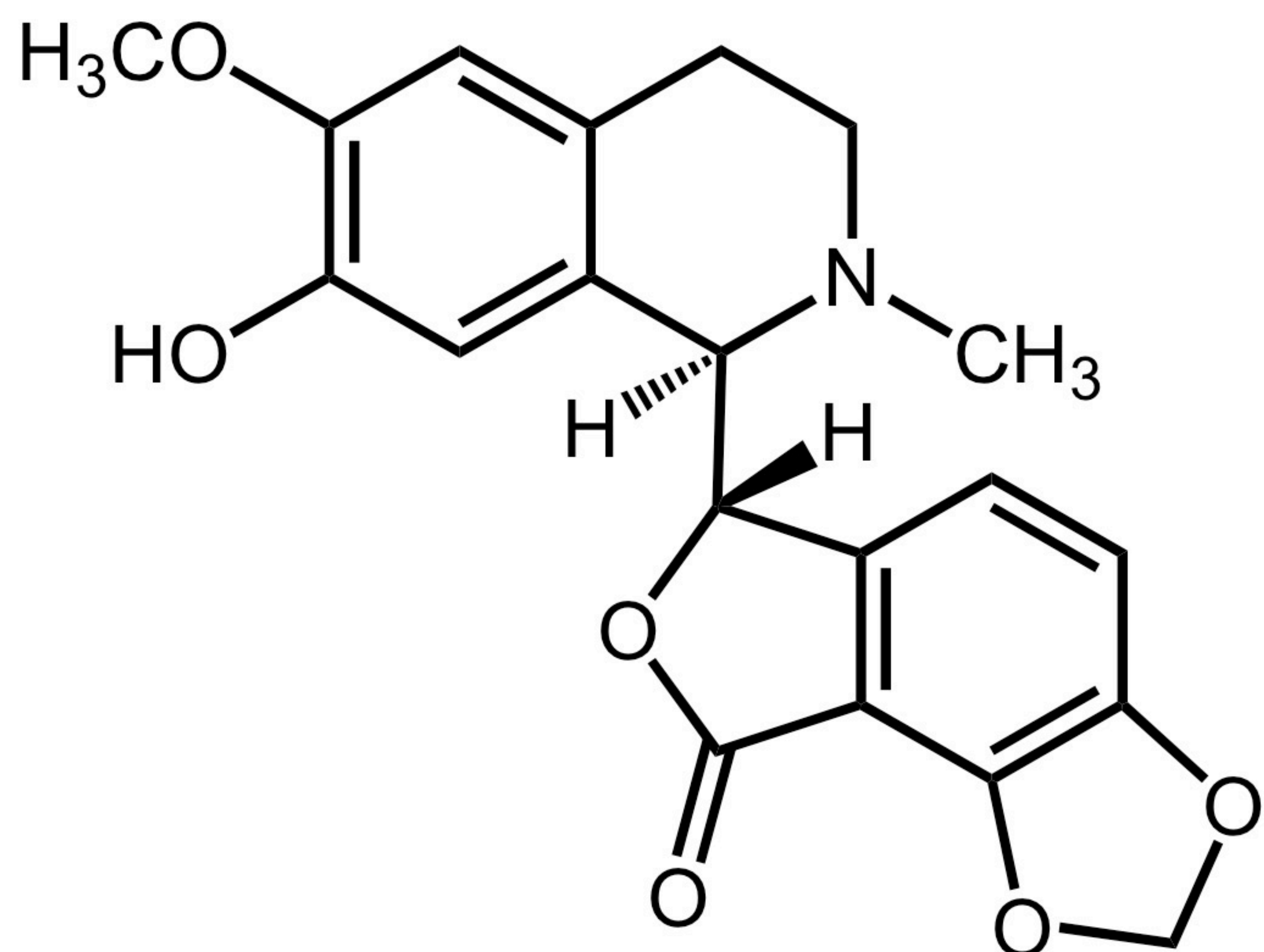


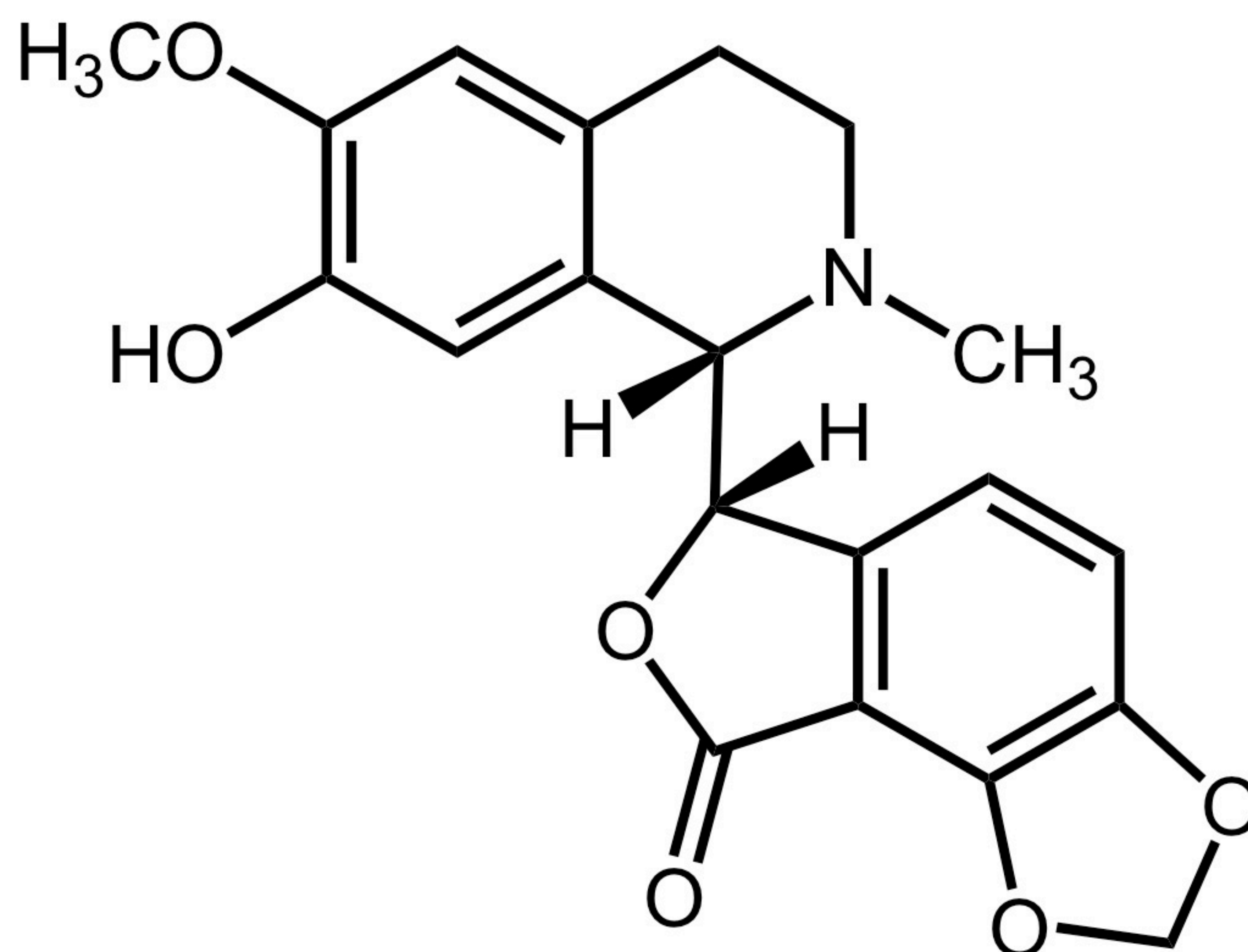
(*R,S*)-Canadaline [*m/z* 370]



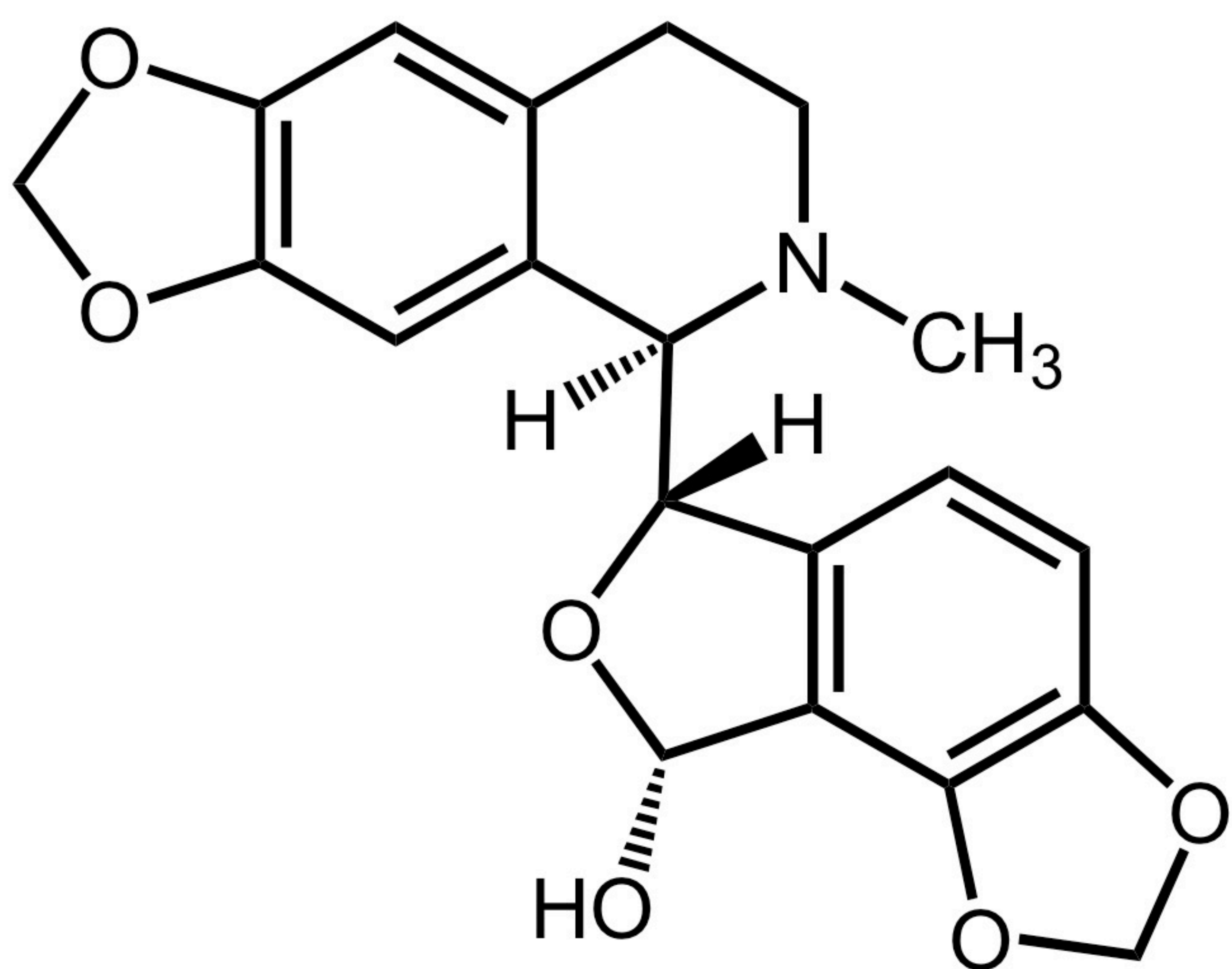
(-)-Corledine [*m/z* 370]



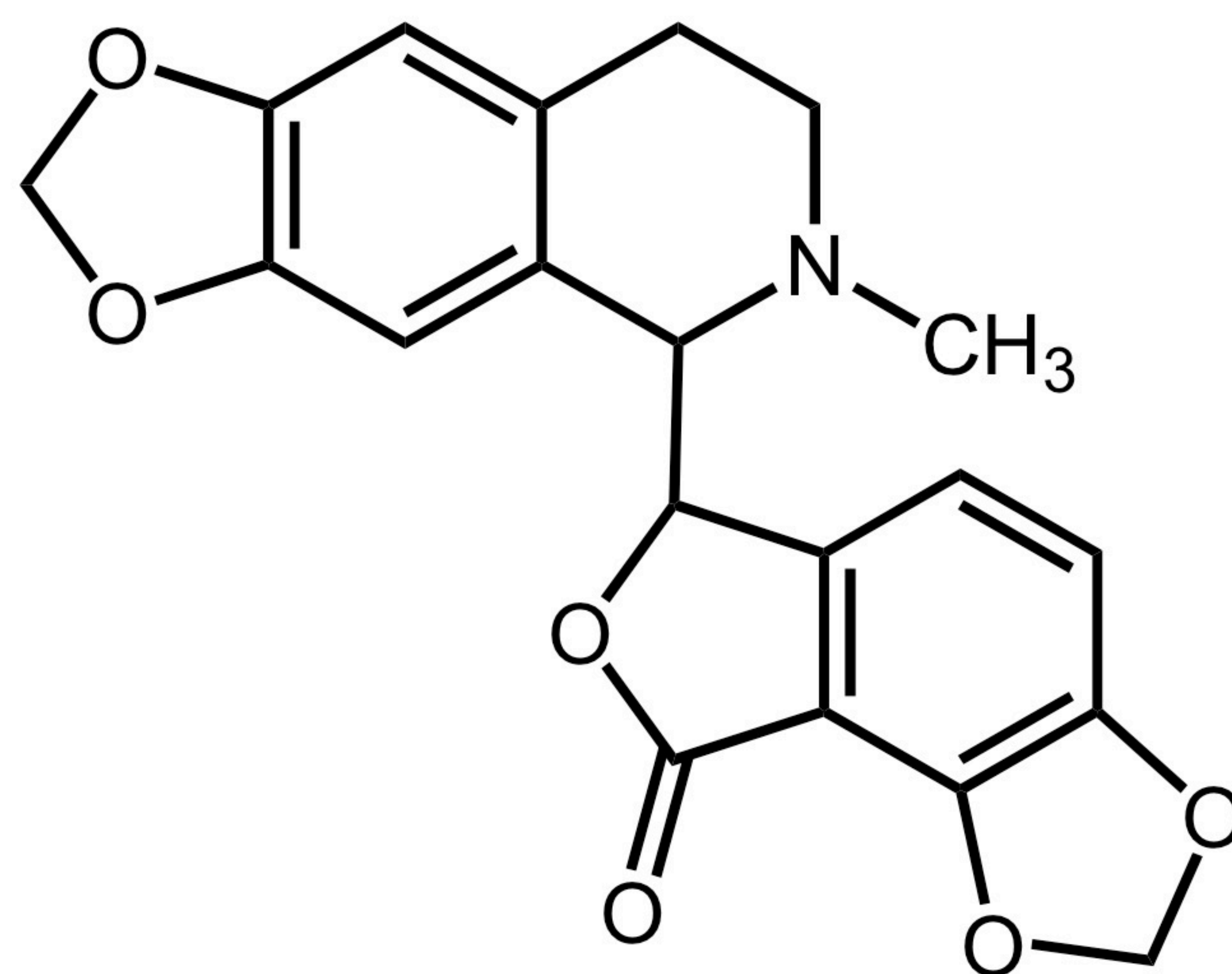
(-)-Severtzine [*m/z* 370]



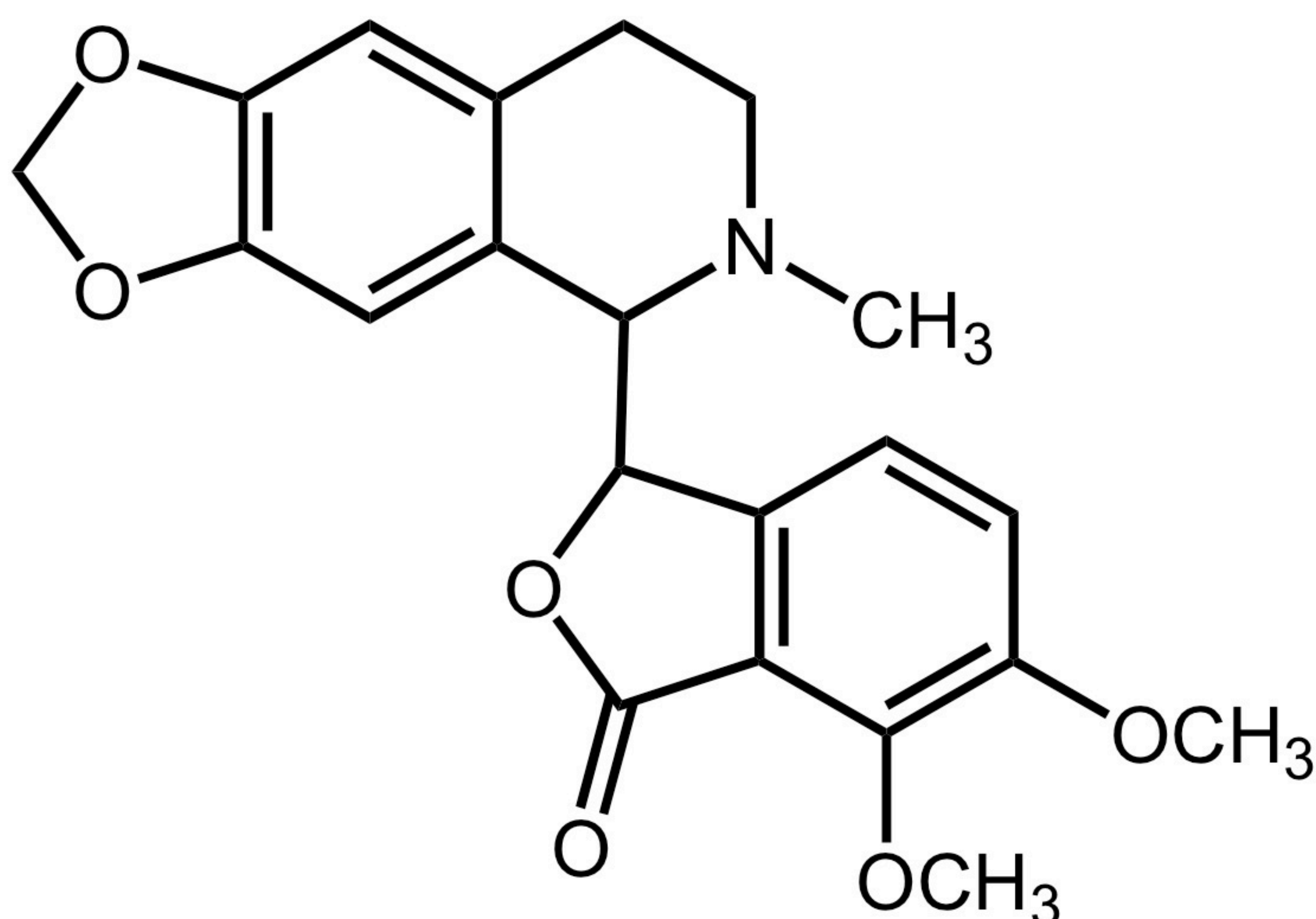
(+)-Corlumidine [*m/z* 370]



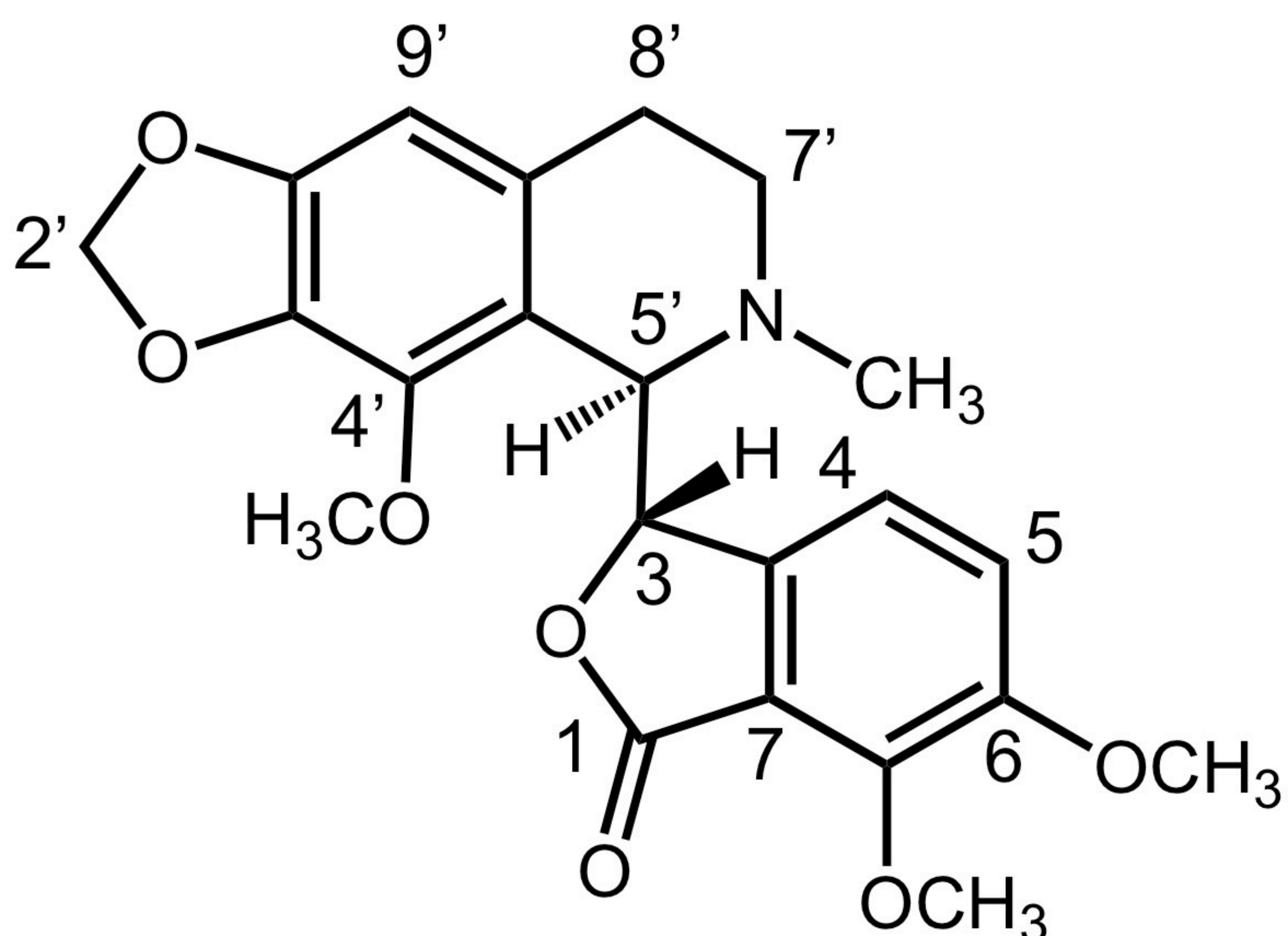
(+)-Egenine [*m/z* 370]



(+/-)-Bicuculline [*m/z* 368]



(+/-)-Hydrastine [*m/z* 384]



Noscapine [*m/z* 414]