

Concise Communication

Impact of the Ebola Epidemic on General and HIV Care in Macenta, Forest Guinea, 2014

Short title

Ebola Impact on HIV Care in Guinea

Authors

David LEUENBERGER¹, Jean HEBELAMOU¹, Stefan STRAHM¹, Nathalie DE REKENEIRE^{2,3}, Eric BALESTRE^{2,3}, Gilles WANDELER^{4,5}, François DABIS^{2,3}, for the IeDEA (International epidemiological databases to evaluate AIDS) West Africa study group

Author affiliations

1. Centre Médical de Macenta, Mission Philafricaine, Conakry, Guinea
2. INSERM U897 – Centre Inserm Epidémiologie et Biostatistique, Université de Bordeaux, Bordeaux, France
3. Université de Bordeaux, ISPED, Centre INSERM U897-Epidémiologie-Biostatistique, Bordeaux, France
4. Department of Infectious Diseases, University Hospital Bern, Bern, Switzerland
5. Institute of Social and Preventive Medicine, University of Bern, Bern, Switzerland

Word count: 1795

Corresponding author / requests for reprints

Dr David Leuenberger
Mission Philafricaine, B.P. 214, Conakry 1, Rép. de Guinée
david.leuenberger@sam-ame.org

Funding

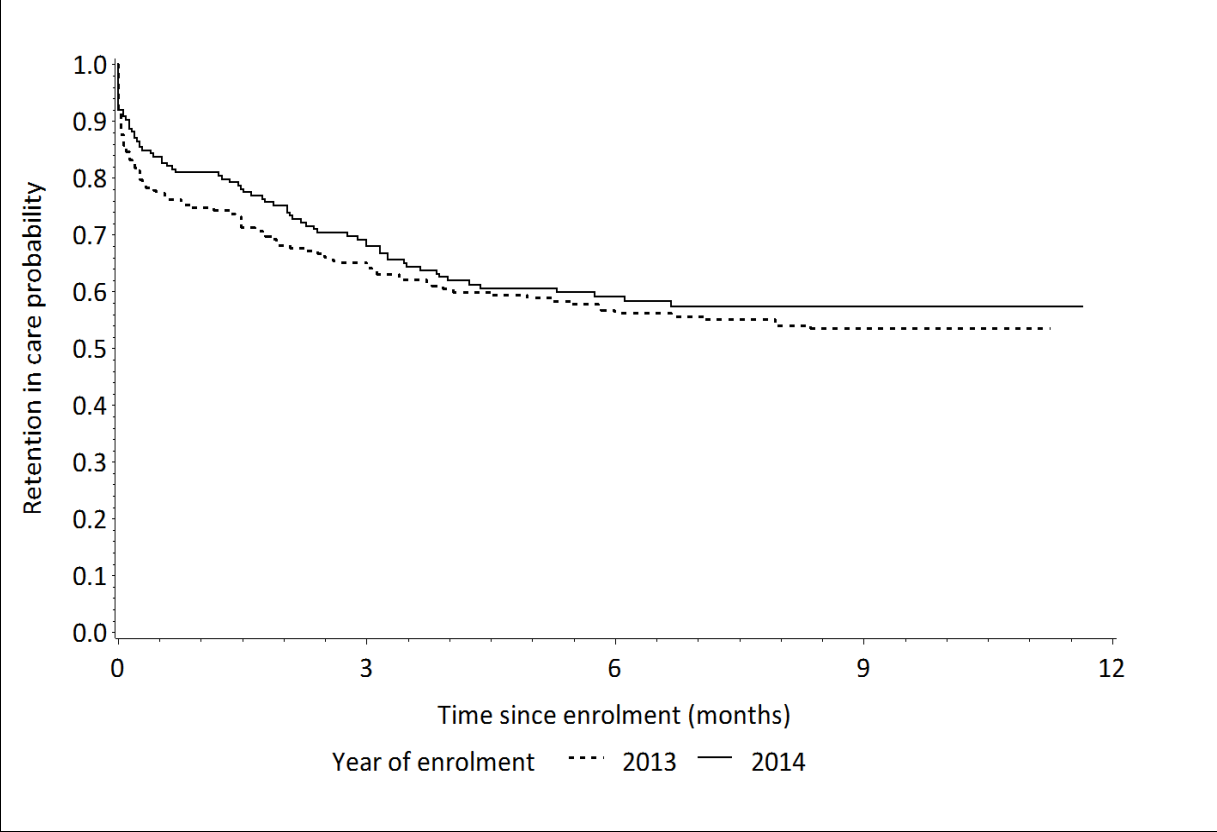
The National Cancer Institute (NCI), the Eunice Kennedy Shriver National Institute of Child Health & Human Development (NICHD) and the National Institute of Allergy and Infectious Diseases (NIAID) of the U.S. National Institutes of Health (NIH), as part of the International Epidemiologic Databases to Evaluate AIDS (IeDEA) under Award Number U01AI069919.

Disclaimer

The content is solely the responsibility of the authors and does not necessarily represent the official views of the National Institutes of Health.

Supplemental Digital Content 2

Figure. Retention in care probability (Kaplan Meier estimate) by year of enrolment in the Macenta cohort (n=389)



Attrition was defined as death or loss to follow-up, using a stringent definition (30-day lateness after the next scheduled visit; Log-Rank test, $p=0.4270$).