

# Supplemental Materials

*Molecular Biology of the Cell*

Ojeda et al.

**THE DISEASE-LINKED Glu-26-Lys MUTANT VERSION OF  
CORONIN 1A EXHIBITS PLEIOTROPIC AND PATHWAY-SPECIFIC  
SIGNALING DEFECTS**

by

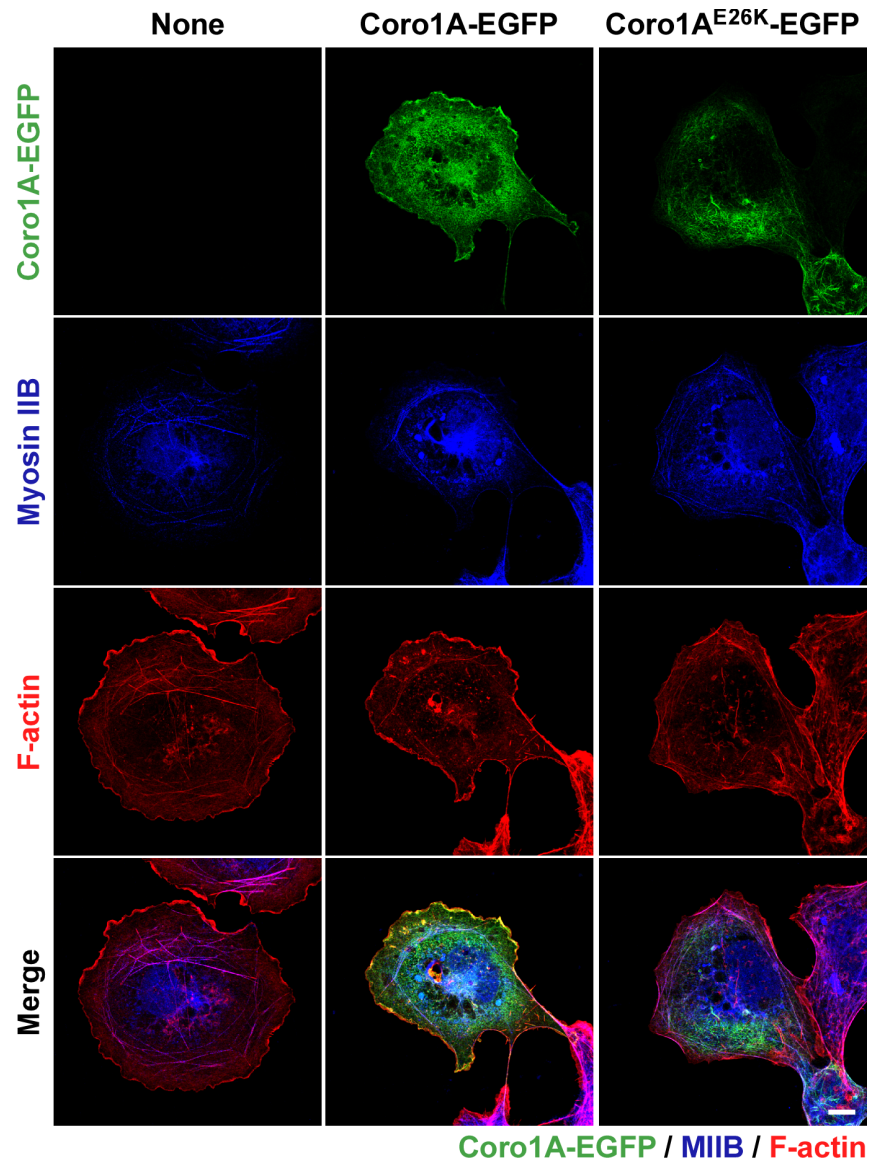
**Virginia Ojeda, Javier Robles-Valero, María Barreira, and Xosé R. Bustelo**

**SUPPLEMENTARY INFORMATION<sup>a</sup>**

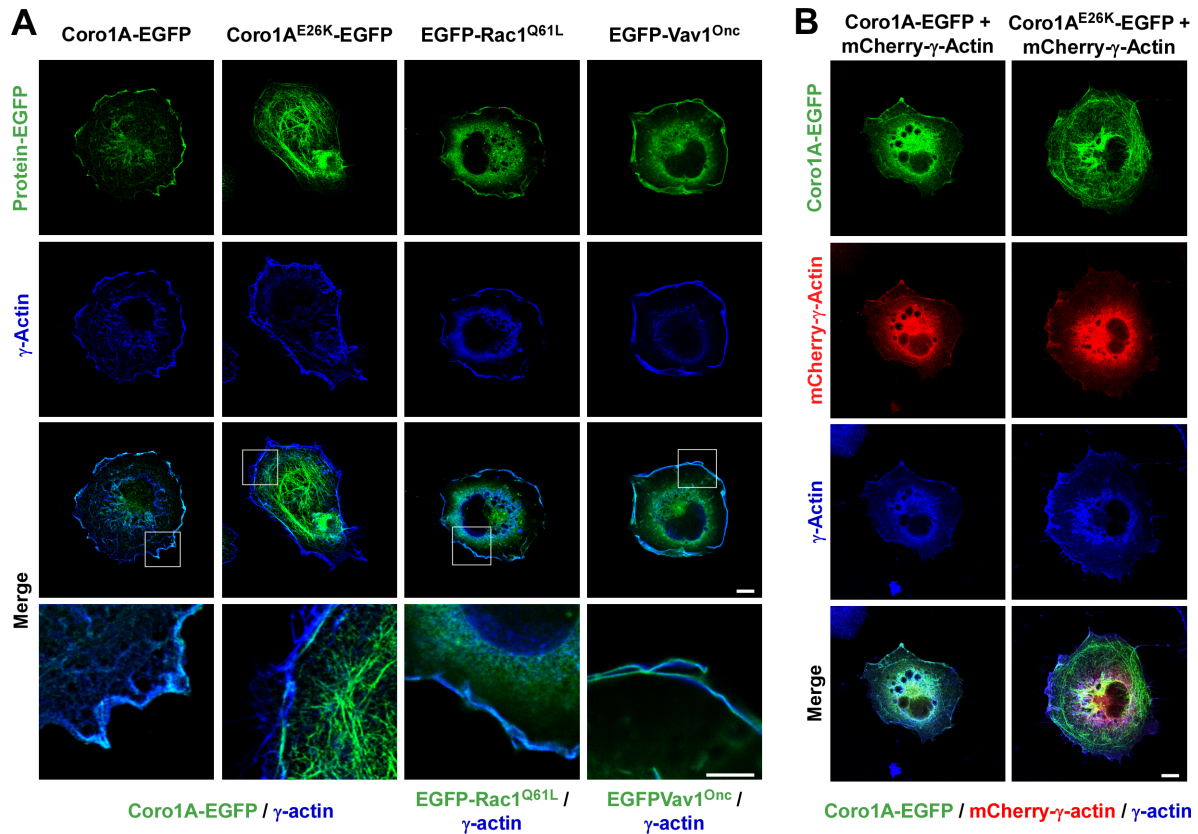
<sup>a</sup>This file includes:

- (1) Supplementary Figures 1 to 3 plus associated legends (pages 2-4)
- (2) Legends for Supplementary Videos 1 to 4 (page 5)

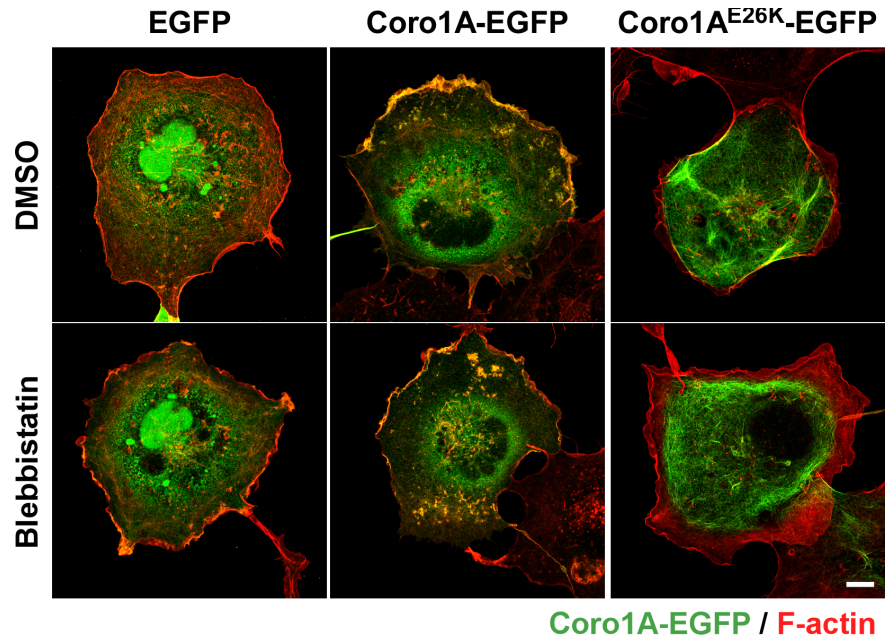
## (1) SUPPLEMENTARY FIGURES



**SUPPLEMENTARY FIGURE 1. Coro1A<sup>E26K</sup>-nucleated filaments are myosin IIB-independent.** Confocal images of COS1 cells transiently expressing the indicated Coro1A-EGFP proteins (top) and stained with antibodies to endogenous myosin IIB and rhodamine-labeled phalloidin. Color code for confocal signals is indicated at the bottom. Areas of potential colocalization had to be seen in white. Scale bar, 10  $\mu$ m.



**SUPPLEMENTARY FIGURE 2. Coro1A<sup>E26K</sup>-nucleated filaments do not contain  $\gamma$ -actin.** (A and B) COS1 cells transiently expressing the indicated ectopic EGFPs (top) either alone (A) or in combination with mCherry-tagged  $\gamma$ -actin (B) were fixed, stained with antibodies to  $\gamma$ -actin and analyzed by confocal microscopy. Panels show representative images of the distribution of the ectopic EGFP (A and B), ectopic mCherry-tagged  $\gamma$ -actin (B) and endogenous  $\gamma$ -actin (A and B). In A, we included in the bottom panels enlarged images of the indicated cell areas (white open squares). Color code for confocal signals is indicated at the bottom. Potential colocalization areas between EGFPs and endogenous  $\gamma$ -actin had to be seen in light blue (A and B). Colocalization among ectopic proteins had to be seen in yellow (B). Colocalization of EGFP-tagged, mCherry-tagged  $\gamma$ -actin, and endogenous  $\gamma$ -actin had to be seen in white (B). Scale bars, 10  $\mu$ m.



**SUPPLEMENTARY FIGURE 3. Blebbistatin does not disrupt the Coro1A<sup>E26K</sup>-nucleated filaments.** Representative images of DMSO- and Blebbistatin-treated COS1 cells expressing the indicated EGFP fusion proteins (top) and stained with rhodamine-labeled phalloidin. Treatments are indicated on the left. Color code for confocal signals is indicated at the bottom. Areas of colocalization are shown in yellow. Scale bar, 10  $\mu\text{m}$