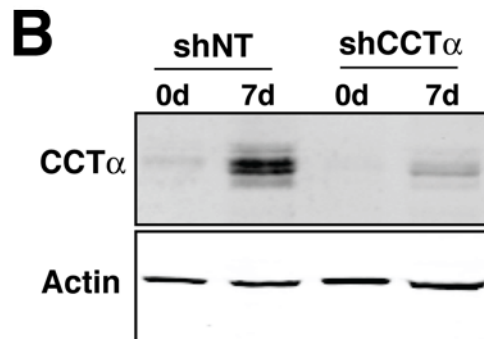
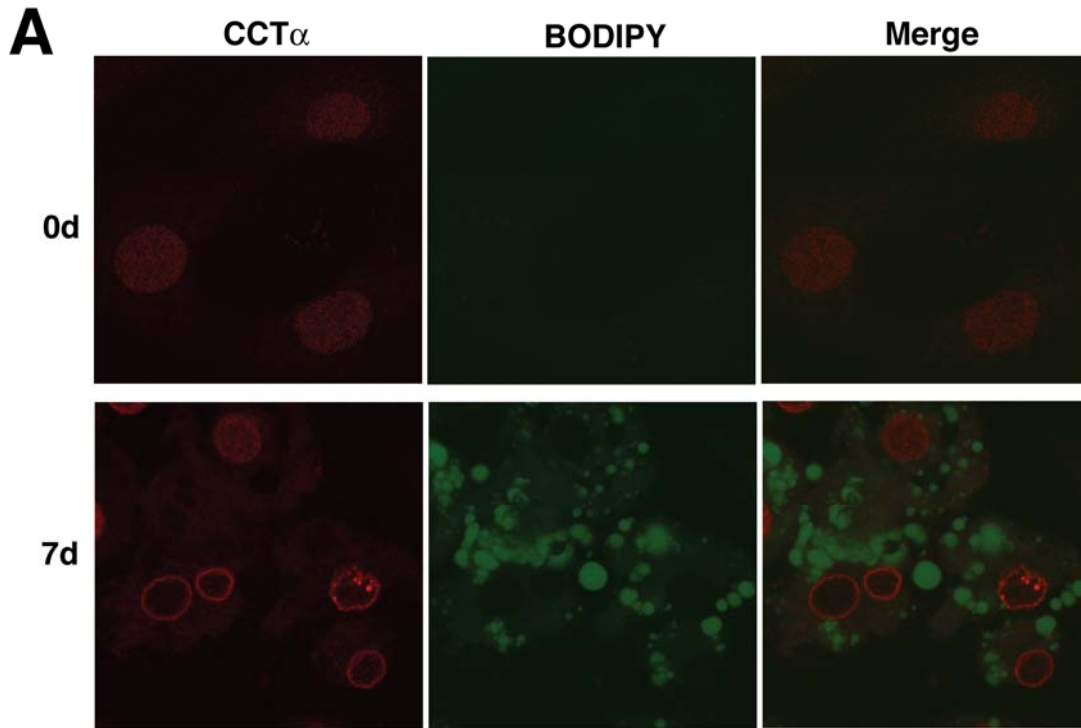


Supplemental Materials

Molecular Biology of the Cell

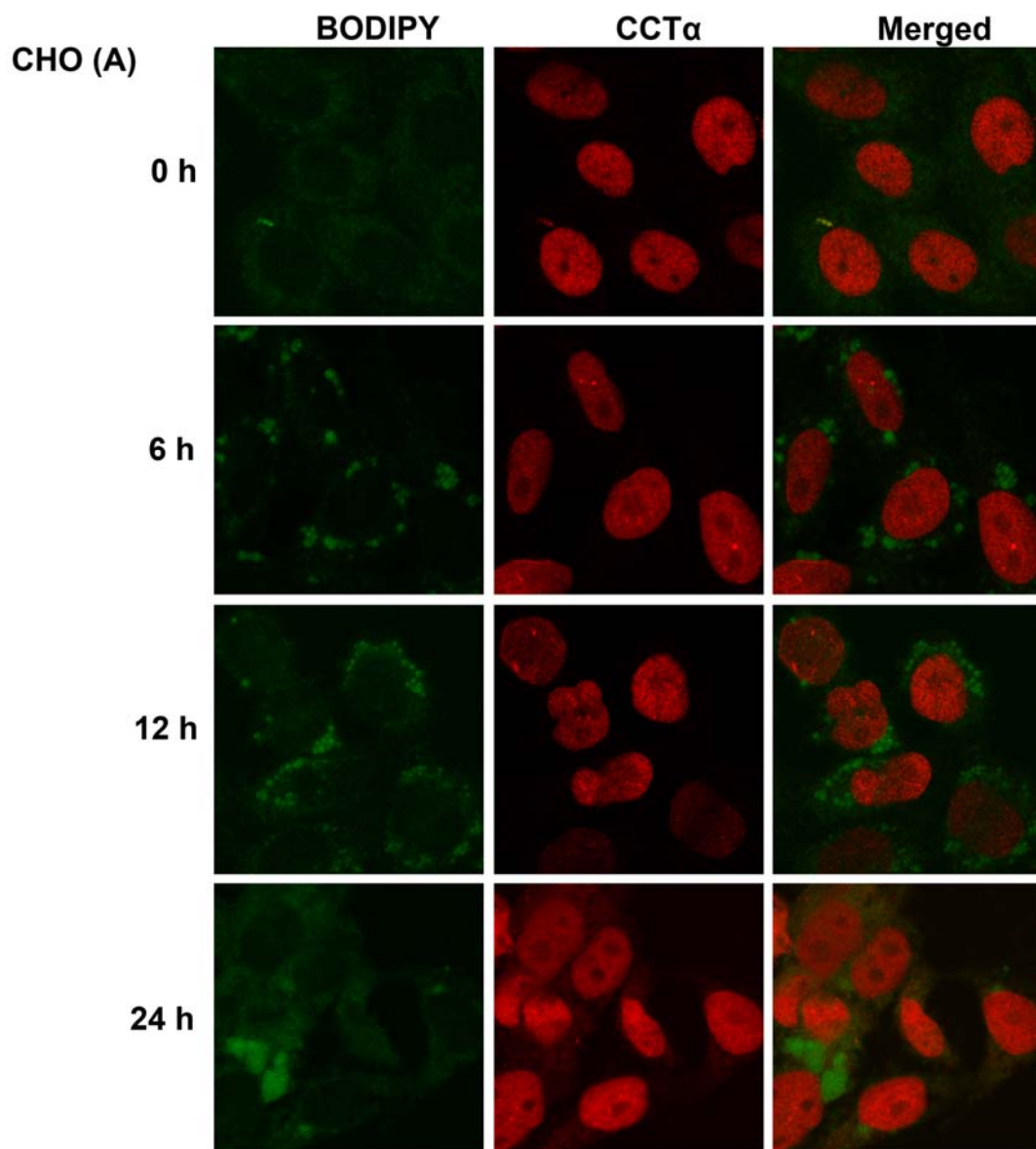
Aitchison et al.

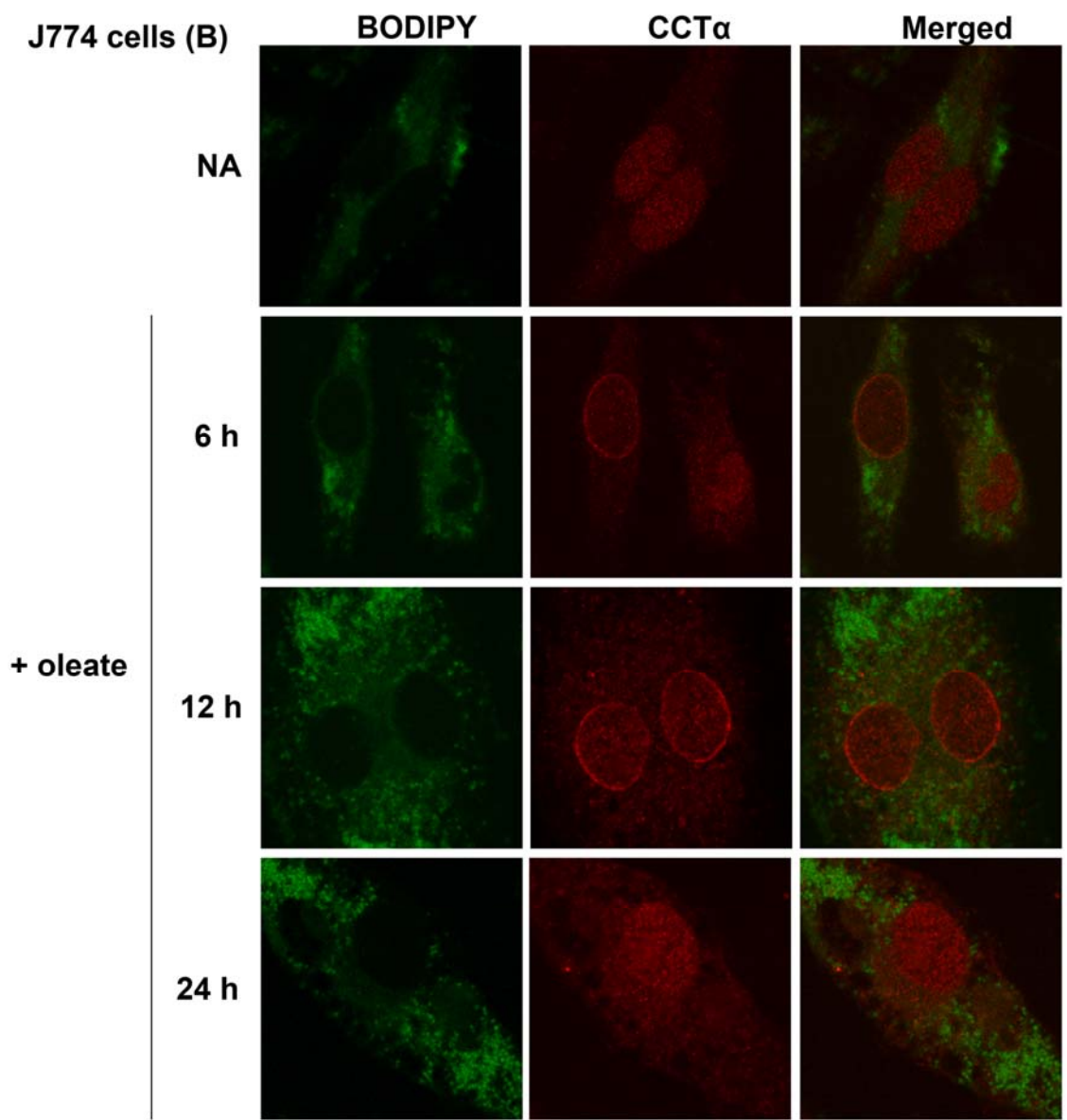
Supplemental Figure 1

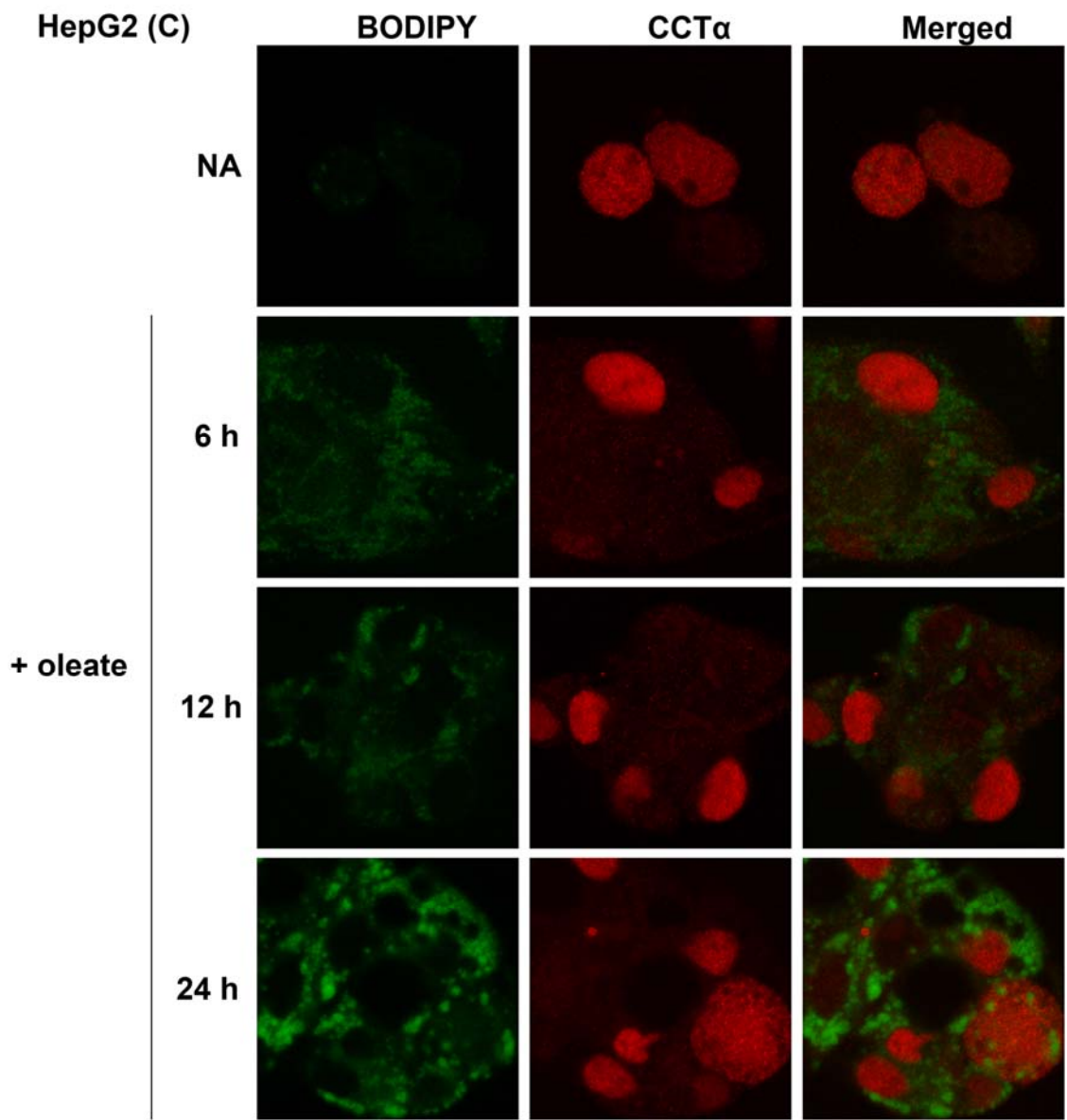


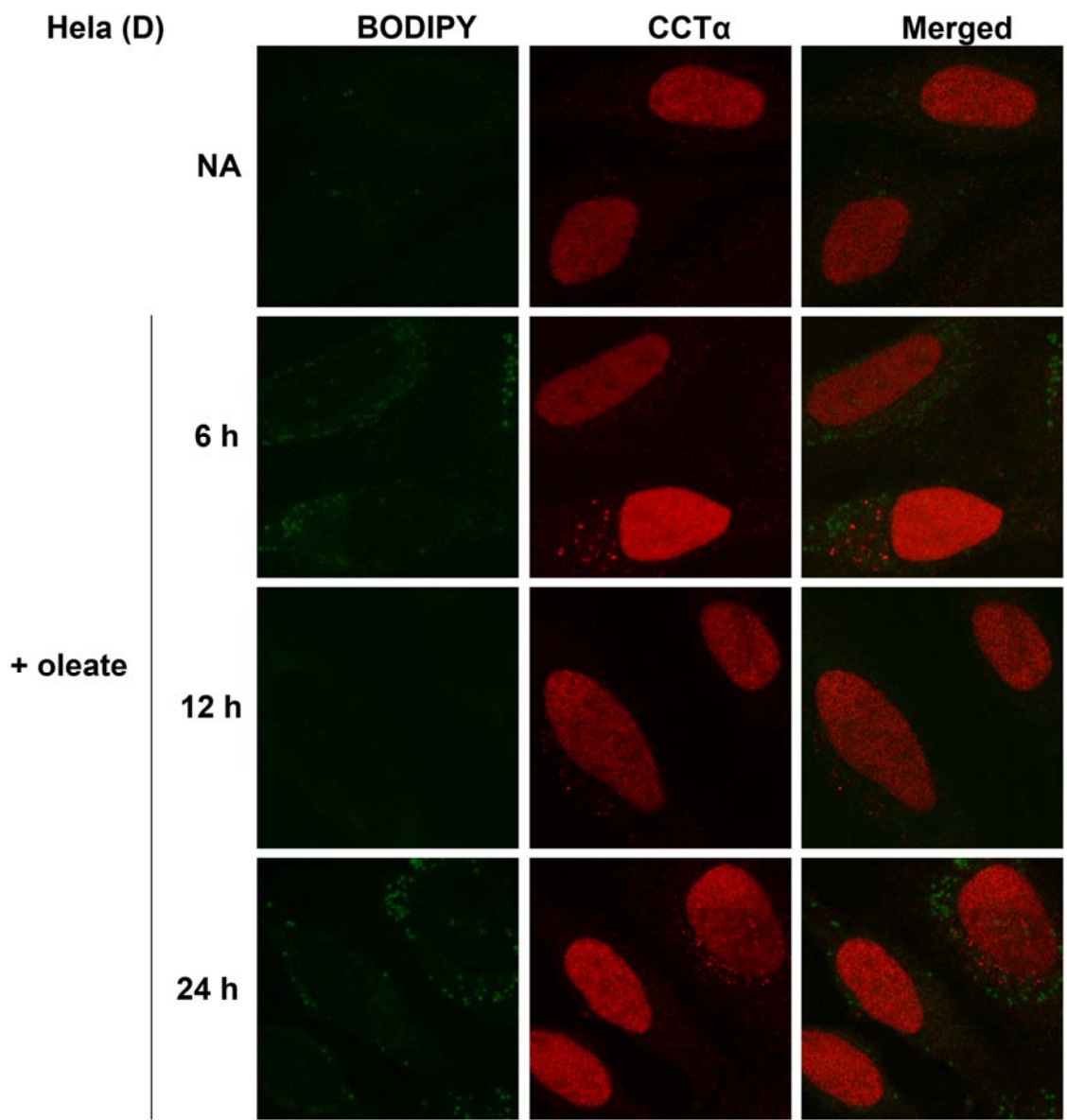
Supplemental Figure 1. Immunodetection of CCT α on the nuclear envelope of 3T3-L1 adipocytes using an N-terminal specific antibody. (A) Control (0 day) and differentiated (7 day) 3T3-L1 cells were immunostained with a commercially available primary antibody directed against the N-terminus of CCT α and a secondary Alexafluor-594 antibody. LDs were visualized with BODIPY-493/503. The images are 1 μ m confocal sections obtained

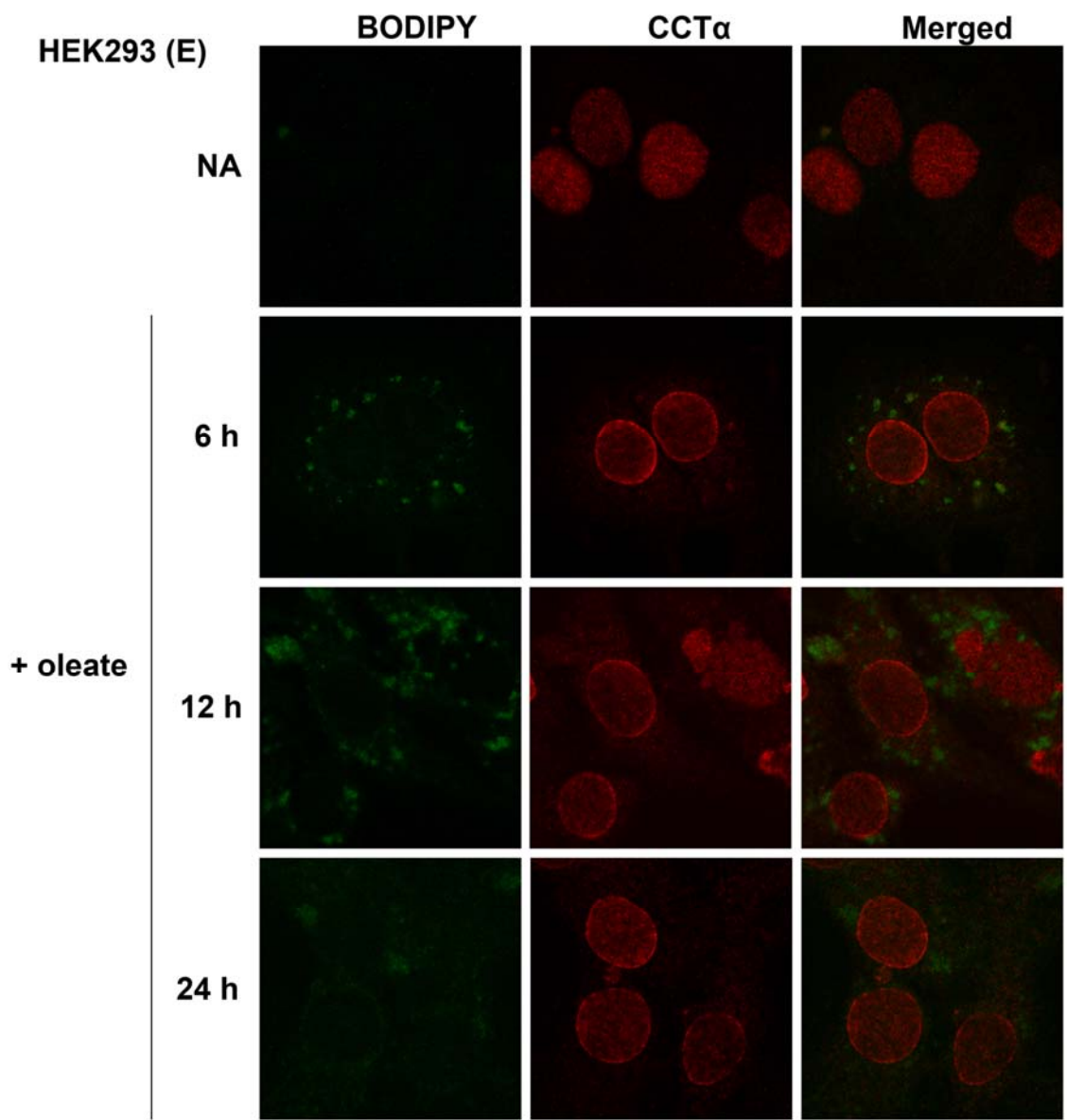
as described in Materials and Methods. (B) 3T3-L1 cells stably expressing shNT or shCCT α were induced for 7 days. Total cell lysates were immunoblotted with the commercial antibody against CCT α .

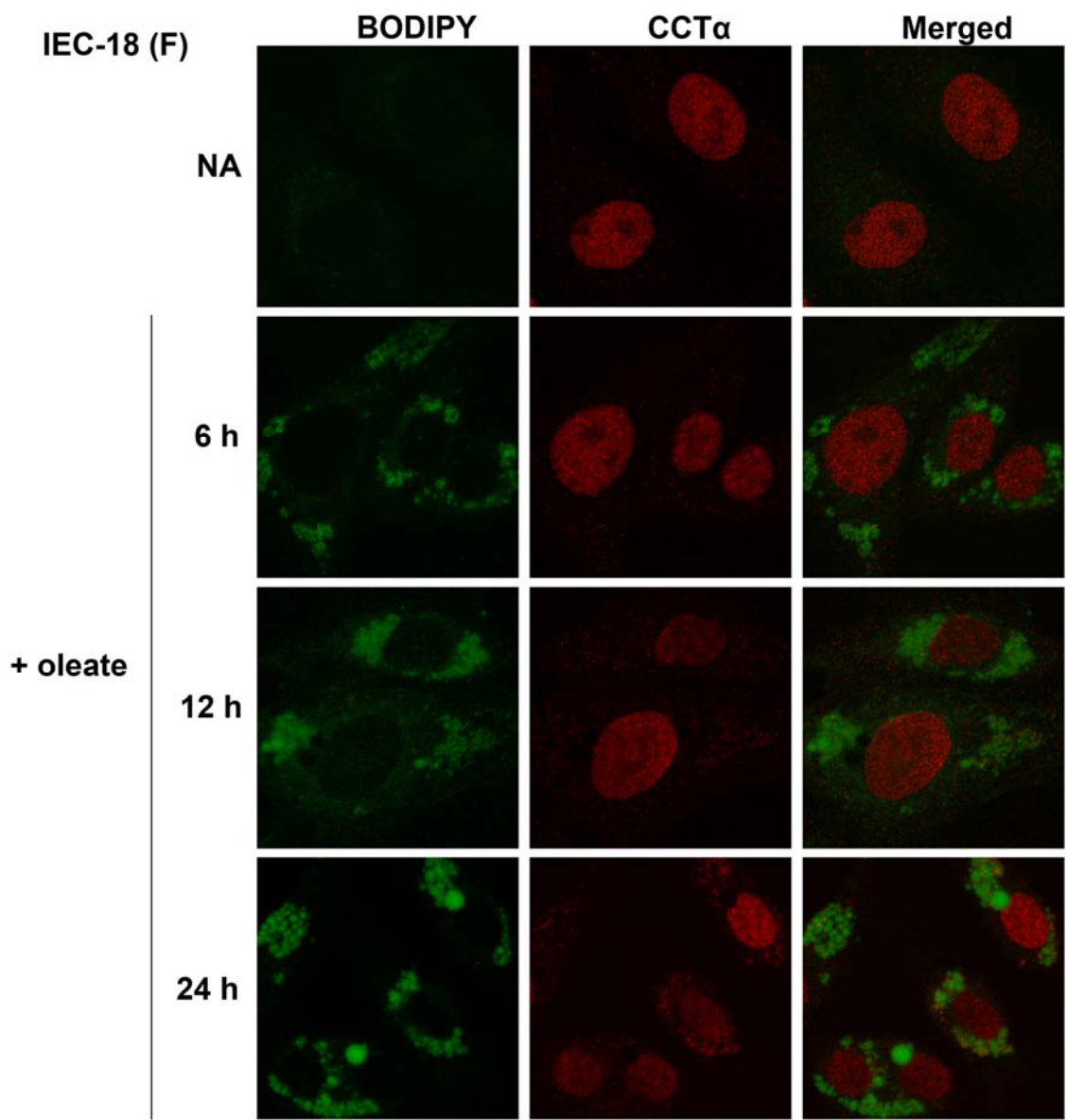


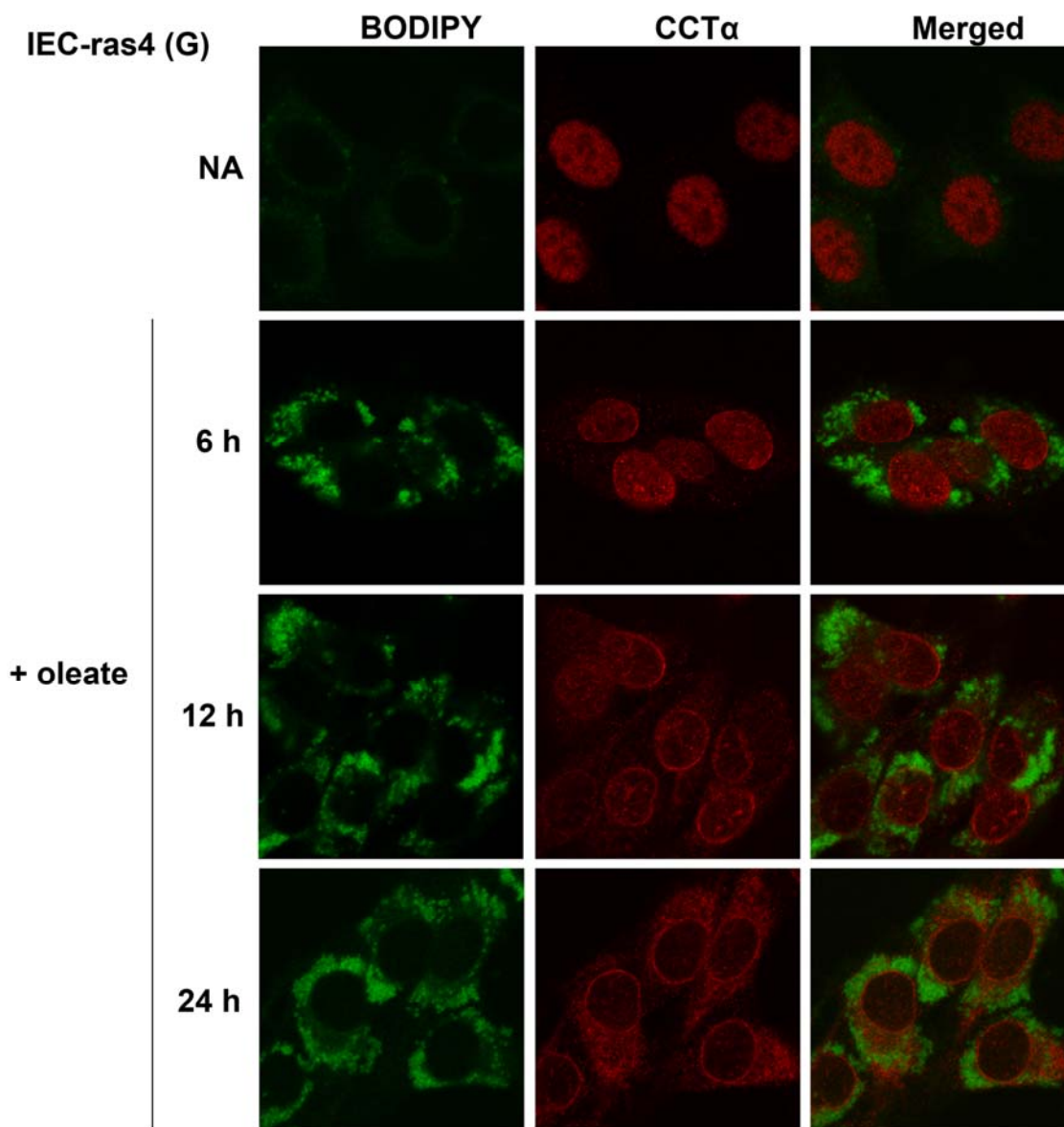












Supplemental Figure 2. Immunolocalization of CCT α in oleate-treated cells. Cells were exposed to 400 μ M oleate/BSA for 0, 6, 12 and 24 h and subsequently immunostained with CCT α primary and Alexafluor-594 secondary antibodies. LDs were visualized with BODIPY-493/503. The images are 1 μ m confocal sections obtained with a 100x objective as described in the Experimental Procedures. Results are representative of several experiments. CHO cells (panel A), J774A1 cells (panel B), HepG2 cells (panel C), HeLa cells (panel D), HEK293 cells (E), IEC-18 (panel F) and IEC-ras4 (panel G).