

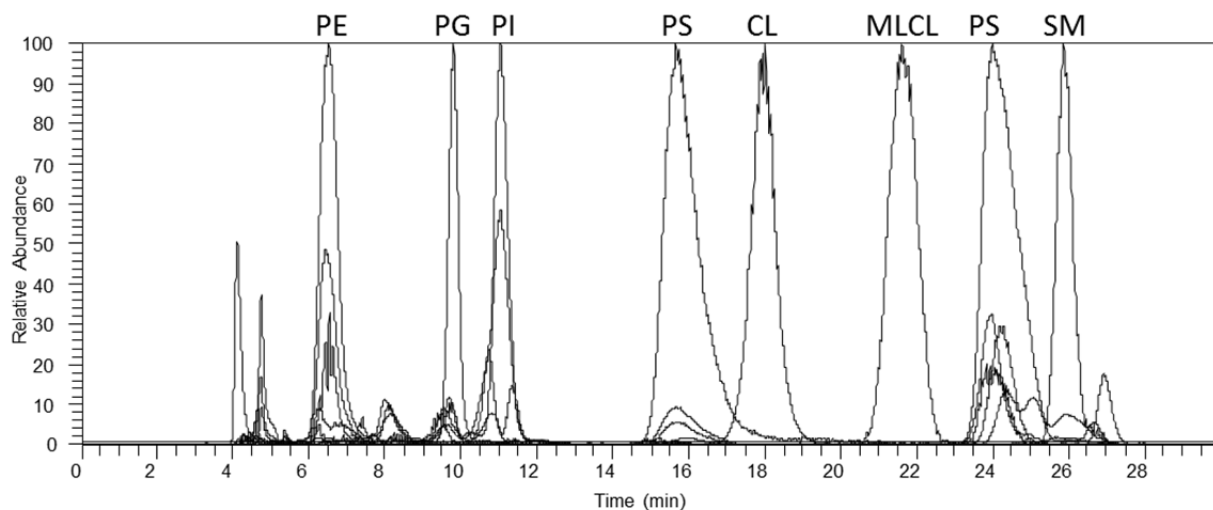
Supplementary Figures to

Phospholipid alterations in the brain and heart in a rat model of asphyxia-induced cardiac arrest and cardiopulmonary bypass resuscitation

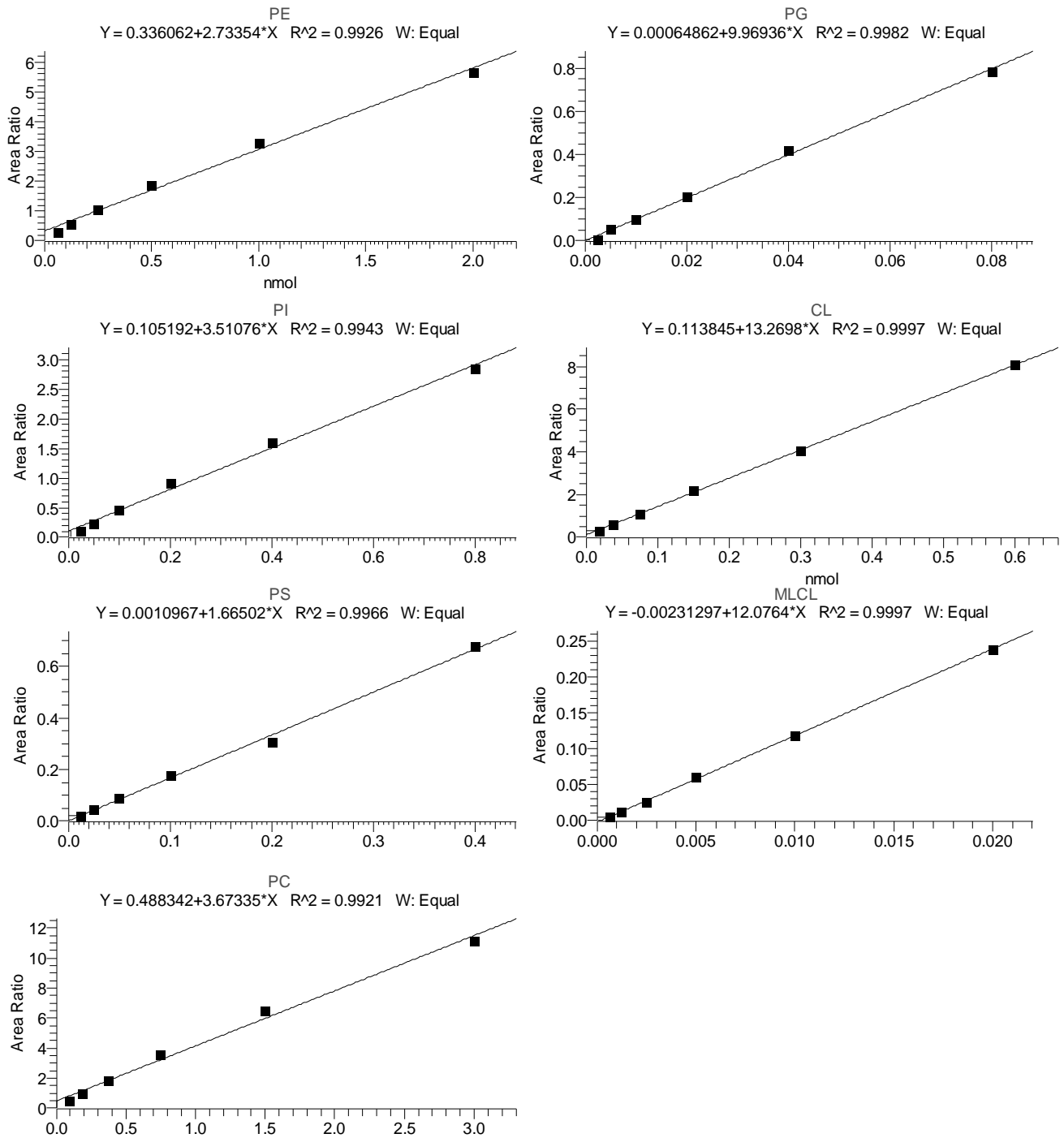
Junhwan Kim^{*}, Joshua W. Lampe, Tai Yin, Koichiro Shinozaki, and Lance B. Becker

Center for Resuscitation Science, Department of Emergency Medicine, University of Pennsylvania, Philadelphia, Pennsylvania, USA

Supplementary Figure 1. Ion chromatograms of individual classes of phospholipids extracted from whole heart tissue. Ion chromatograms are generated using the most abundant species of each class.

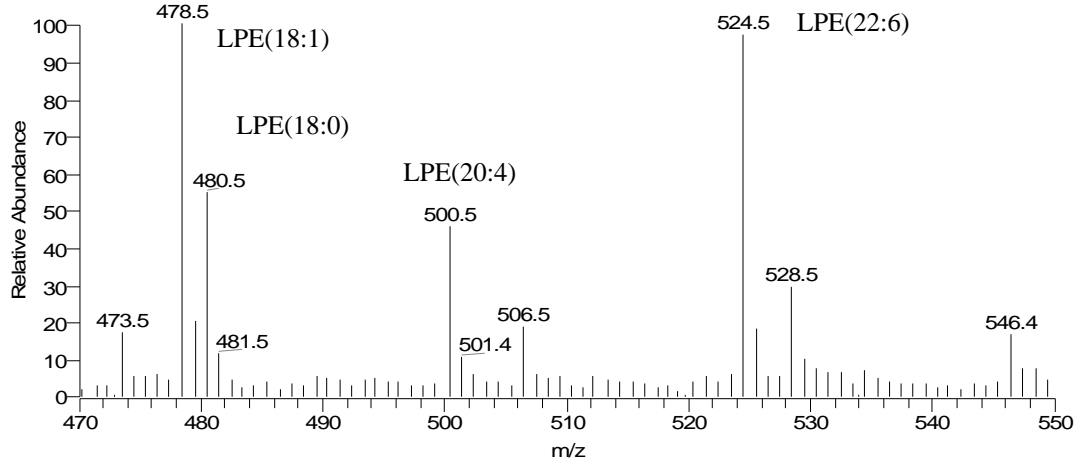


Supplementary Figure 2. Representative standard curves of individual classes of phospholipids. Standardized phospholipids with six different concentrations were extracted and analyzed by HPLC-MS.

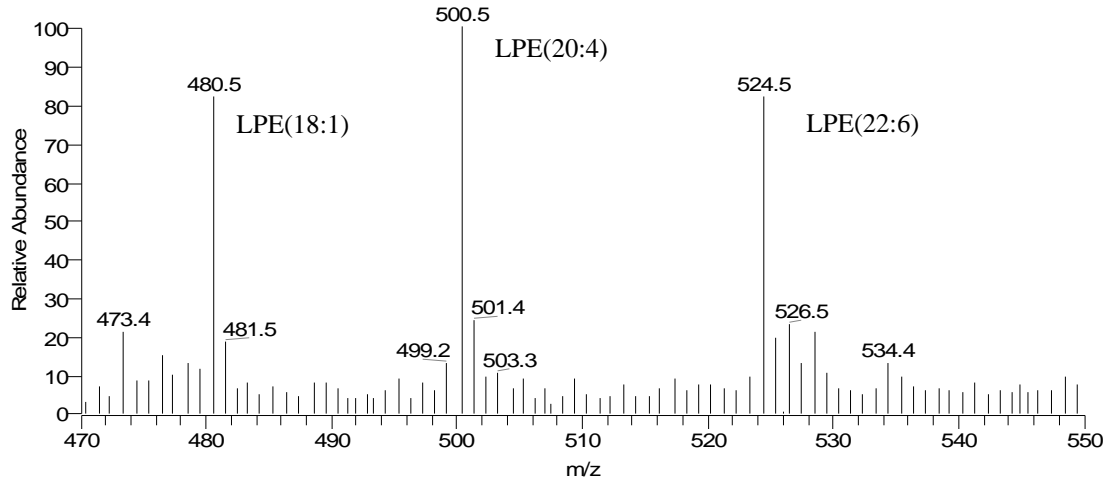


Supplementary Figure 3. Mass spectra of lysoPE from brain tissue (upper panel) and from heart tissue (middle panel) and MS/MS spectra of MS peaks at 478 (lower left) and 480 (lower right) from brain tissue.

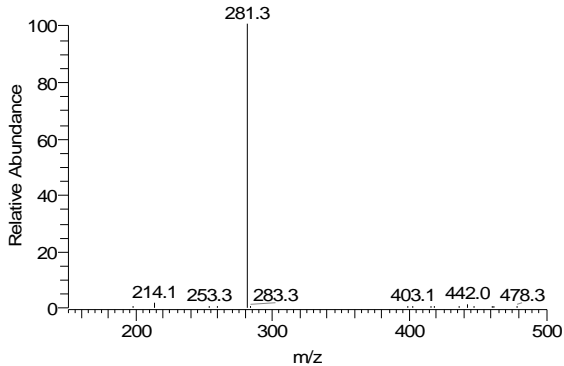
B2 #2920-3407 RT: 7.84-9.15 AV: 488 NL: 2.90E2
 F: ITMS - c ESI Full ms[350.00-1700.00]



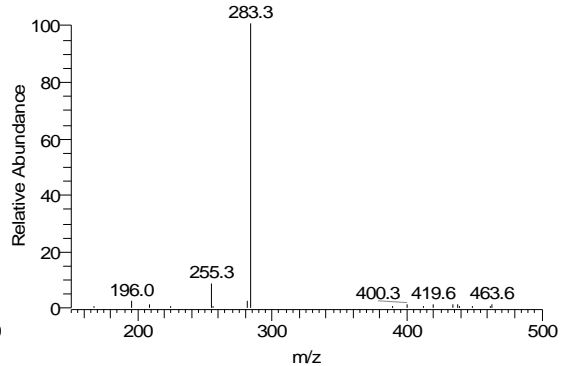
H1 #2913-3400 RT: 7.84-9.15 AV: 488 NL: 1.23E2
 F: ITMS - c ESI Full ms[350.00-1700.00]



BT_Ms2 #2767 RT: 8.40 AV: 1 NL: 1.17E3
 F: ITMS - c ESI d Full ms2 478.36@cid35.00 [120.00-970.00]

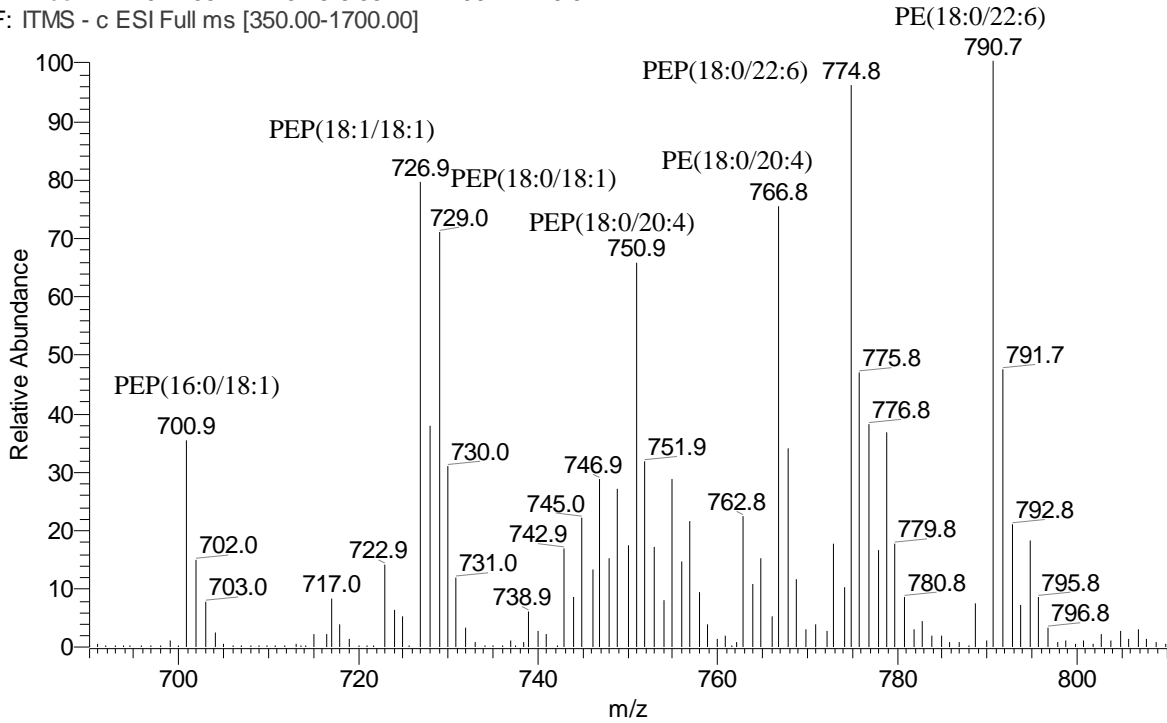


BT_Ms2 #2841 RT: 8.70 AV: 1 NL: 5.98E2
 F: ITMS - c ESI d Full ms2 480.47@cid35.00 [120.00-975.00]

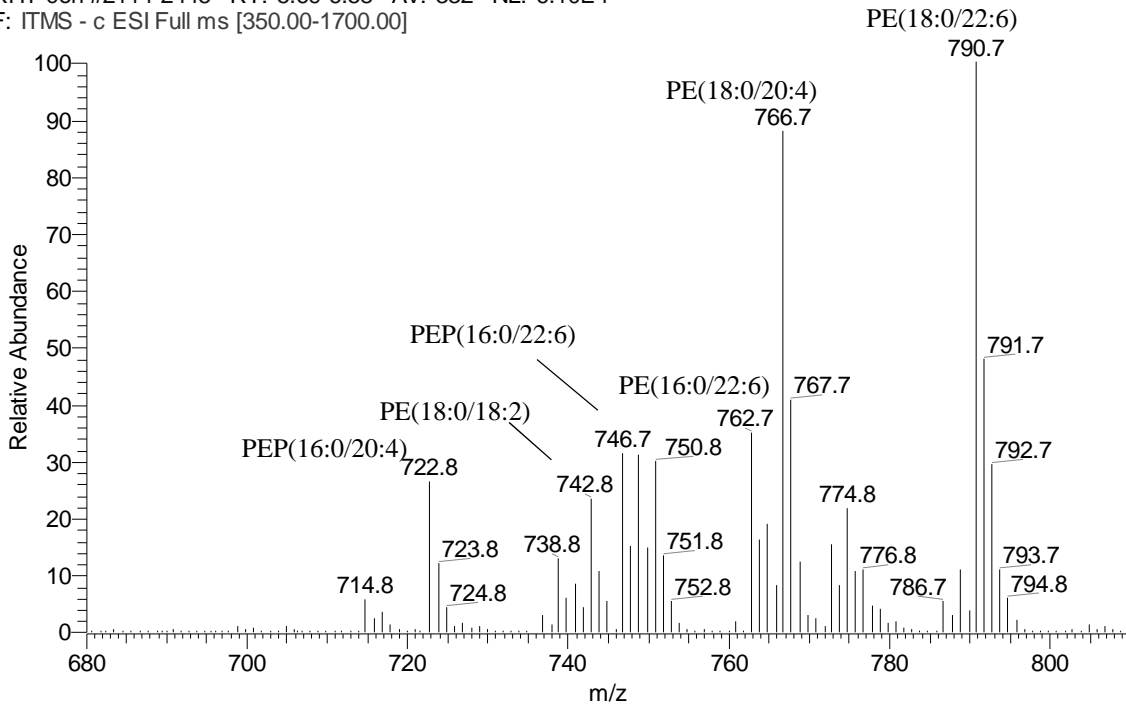


Supplementary Figure 4. Mass spectra of PE from brain tissue (upper panel) and from heart tissue (lower panel).

RBT-con #2140-2435 RT: 5.76-6.55 AV: 296 NL: 9.97E4
F: ITMS - c ESI Full ms [350.00-1700.00]

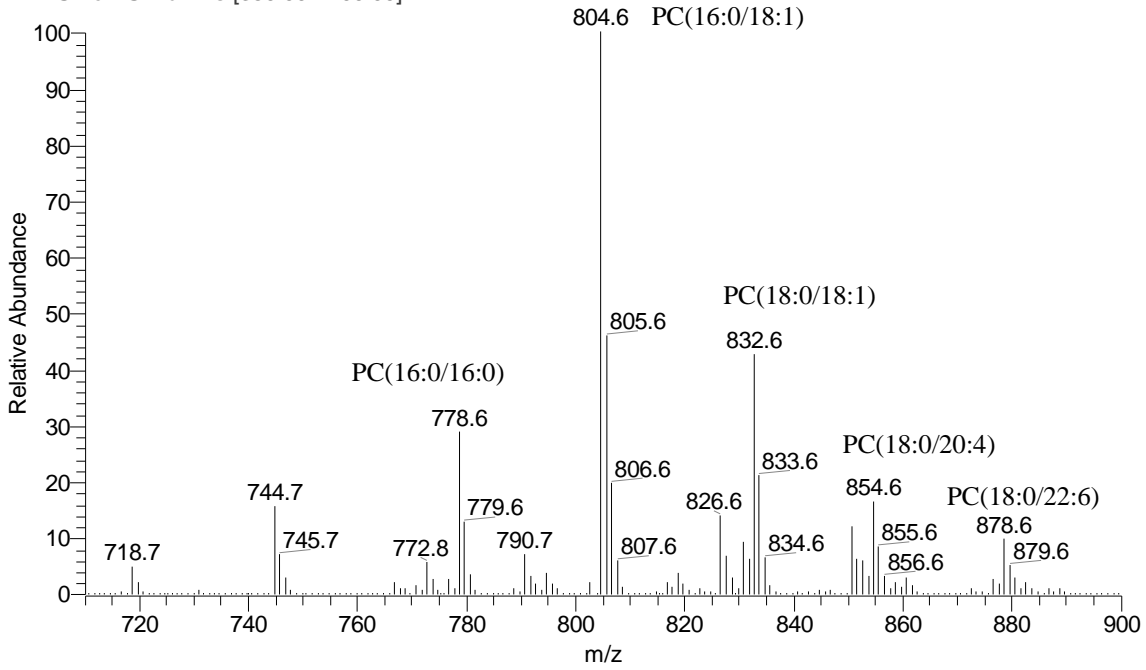


RHT-con #2114-2445 RT: 5.69-6.58 AV: 332 NL: 6.10E4
F: ITMS - c ESI Full ms [350.00-1700.00]

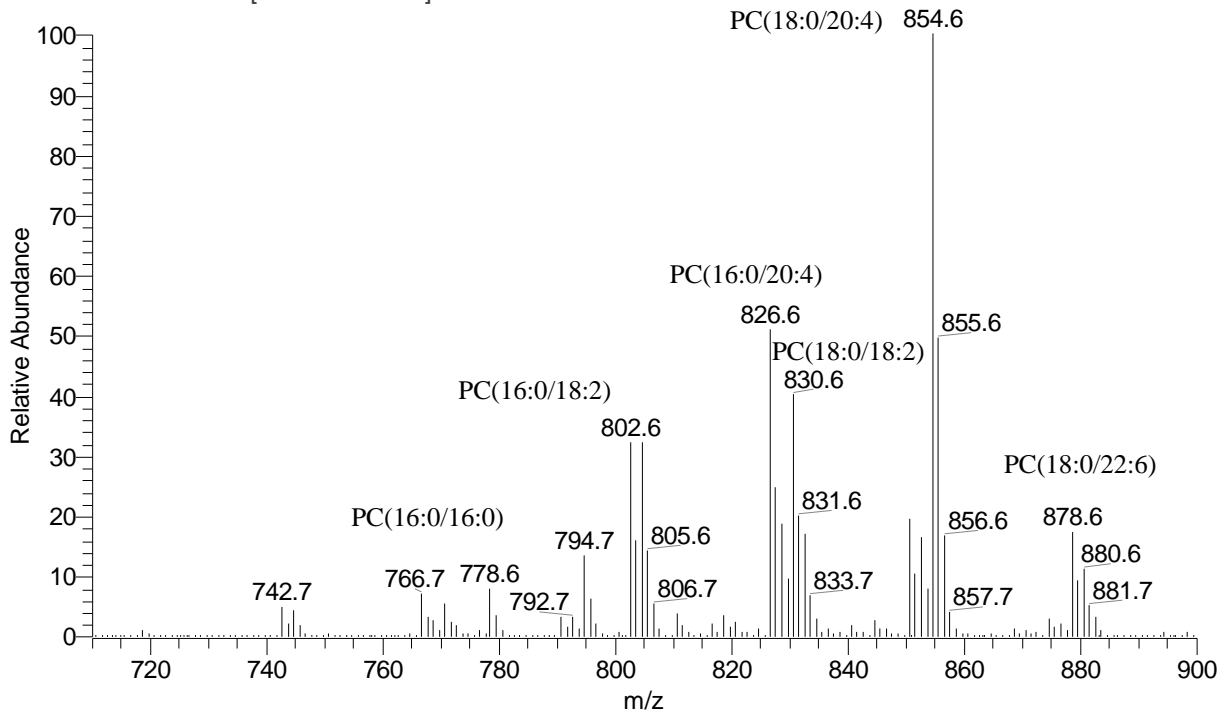


Supplementary Figure 5. Mass spectra of PC from brain tissue (upper panel) and from heart tissue (lower panel).

RBT-con #8416-9807 RT: 22.65-26.39 AV: 1392 NL: 6.37E4
F: ITMS - c ESI Full ms [350.00-1700.00]

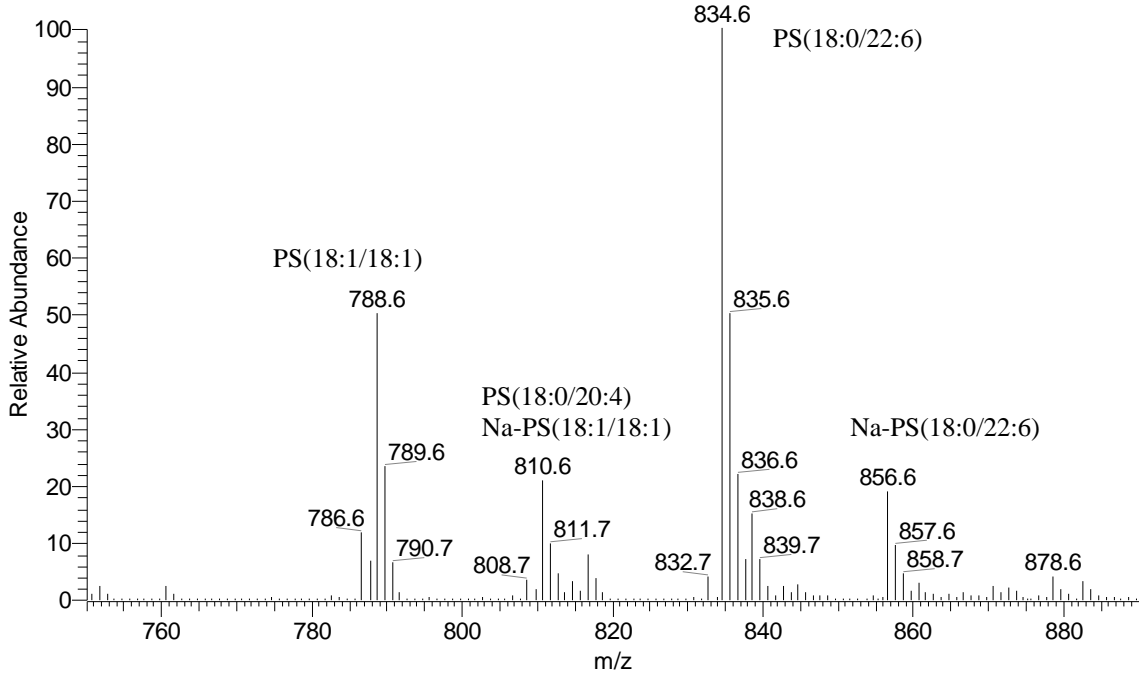


RHT-con #8175-9628 RT: 22.00-25.91 AV: 1454 NL: 2.37E4
F: ITMS - c ESI Full ms [350.00-1700.00]

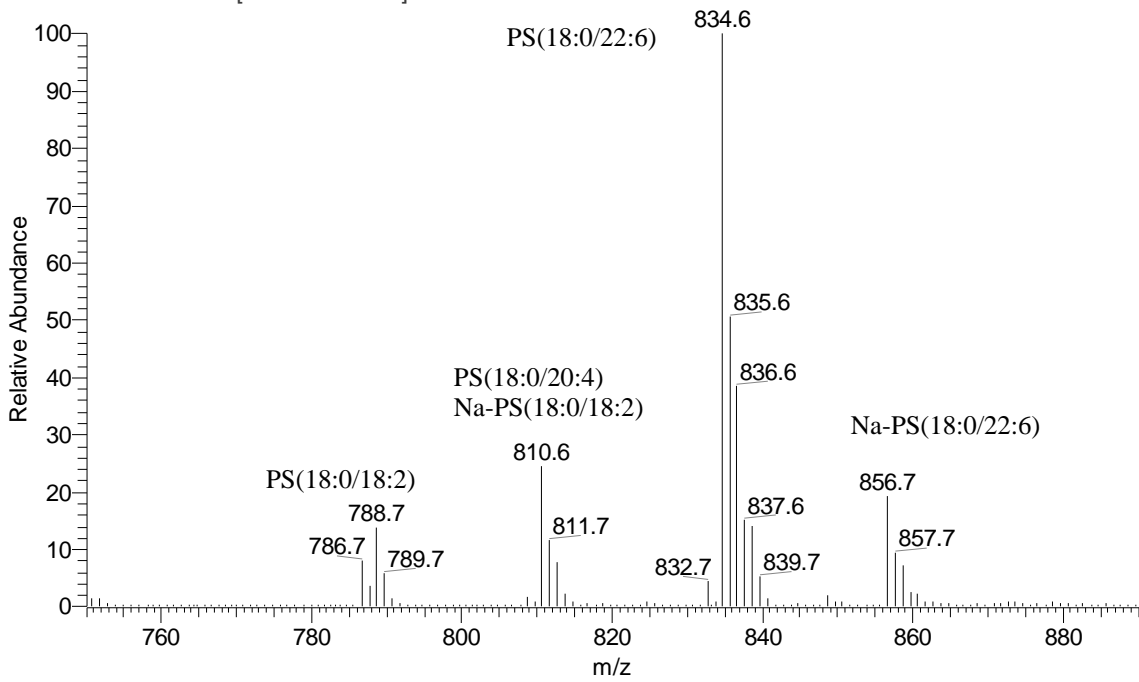


Supplementary Figure 6. Mass spectra of PS brain tissue (upper panel) and from heart tissue (lower panel).

RBT-con #5440-6172 RT: 14.64-16.61 AV: 733 NL: 4.27E4
F: ITMS - c ESI Full ms [350.00-1700.00]

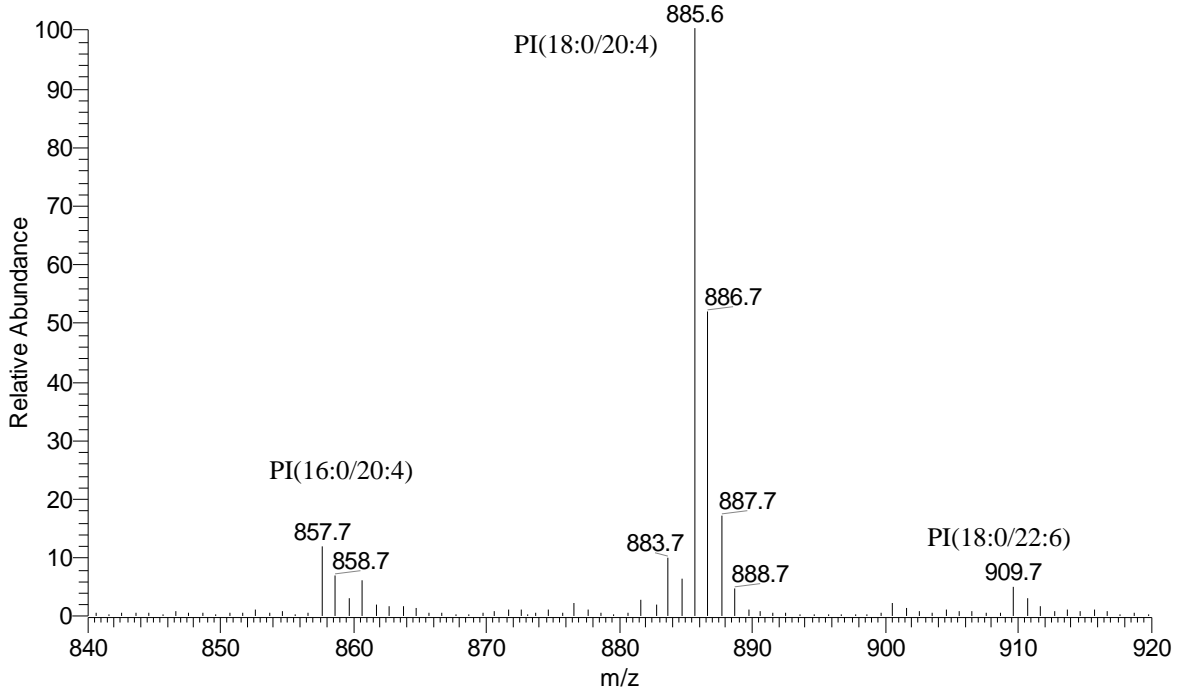


RHT-con #5610-5900 RT: 15.10-15.88 AV: 291 NL: 1.10E4
F: ITMS - c ESI Full ms [350.00-1700.00]

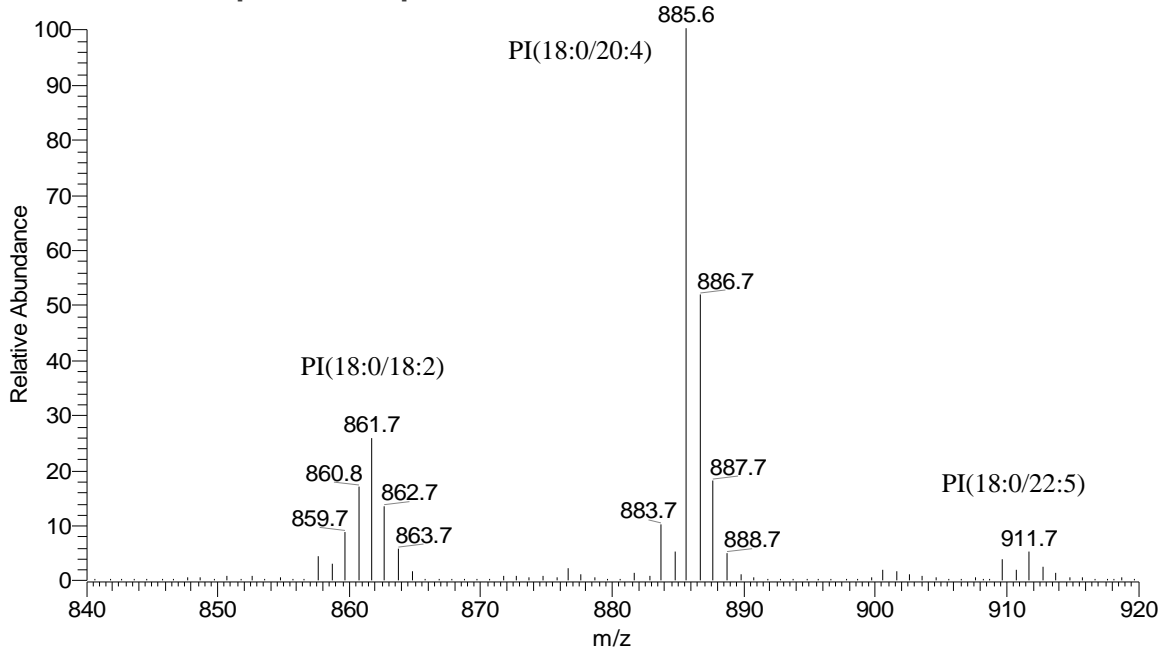


Supplementary Figure 7. Mass spectra of PI brain tissue (upper panel) and from heart tissue (lower panel).

RBT-con #3843-4192 RT: 10.34-11.28 AV: 350 NL: 3.54E4
F: ITMS - c ESI Full ms [350.00-1700.00]

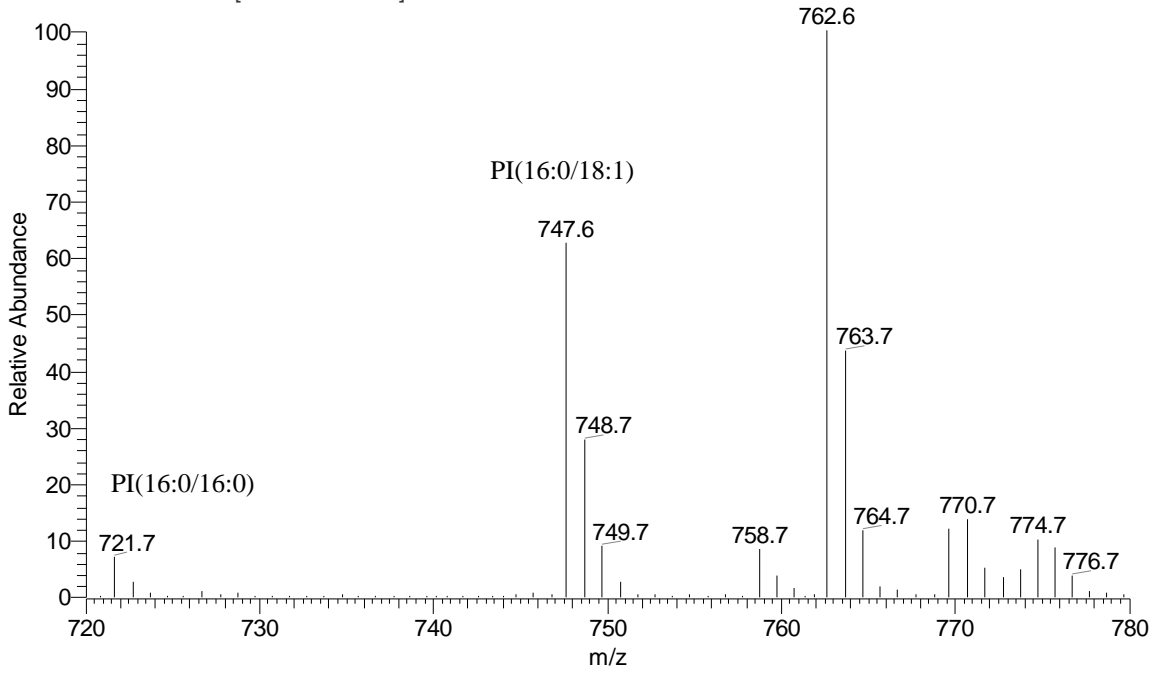


RHT-con #3890-4258 RT: 10.47-11.46 AV: 369 NL: 1.85E4
F: ITMS - c ESI Full ms [350.00-1700.00]

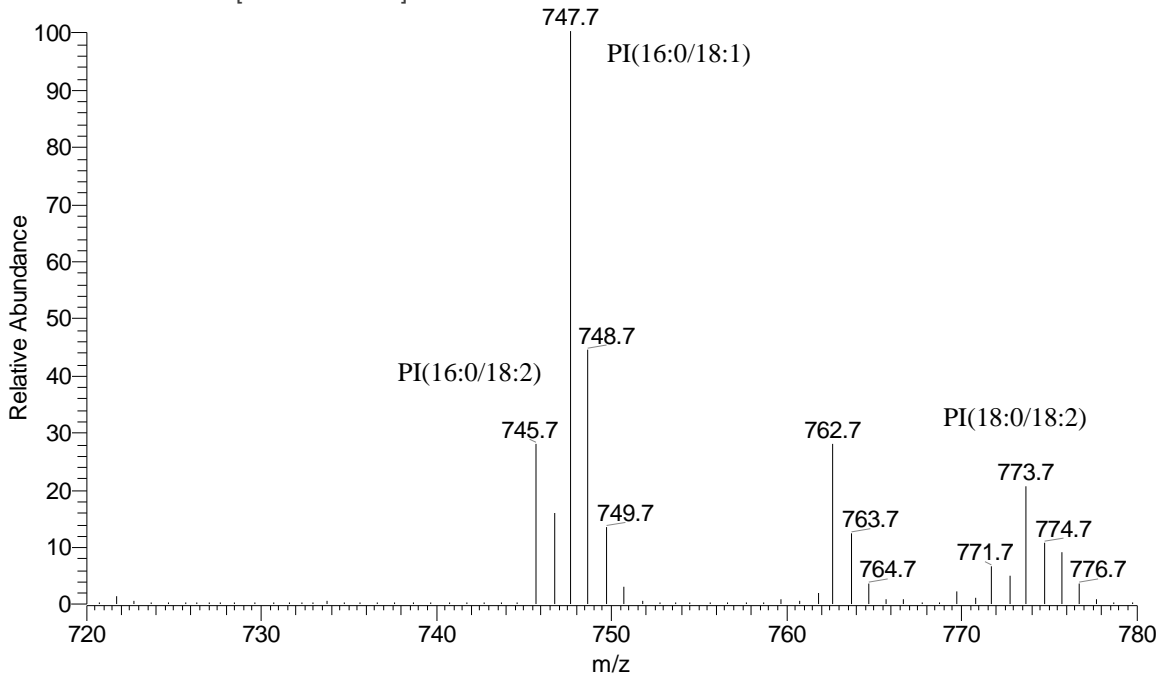


Supplementary Figure 8. Mass spectra of PG brain tissue (upper panel) and from heart tissue (lower panel).

RBT-con #3546-3757 RT: 9.54-10.11 AV: 212 NL: 1.09E4
F: ITMS - c ESI Full ms [350.00-1700.00]



RHT-con #3507-3726 RT: 9.44-10.03 AV: 220 NL: 2.65E4
F: ITMS - c ESI Full ms [350.00-1700.00]



Supplementary Figure 9. The relative concentration of individual species in each class of phospholipid in heart tissue following 30 min CA or CA followed by 60 min CPB resuscitation.

