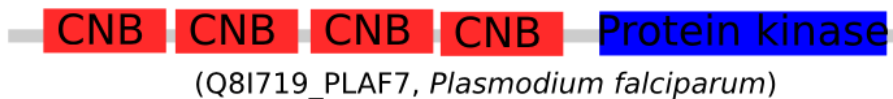
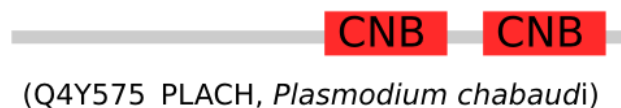
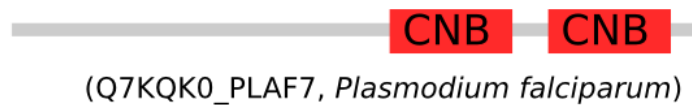


Supplementary Figures:

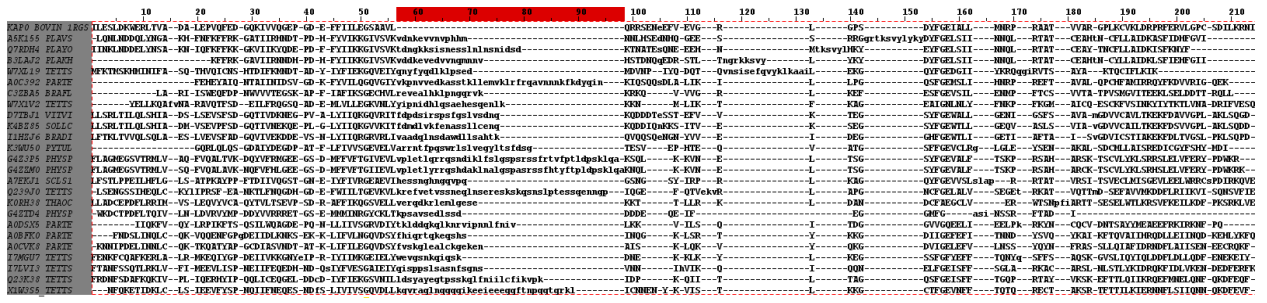
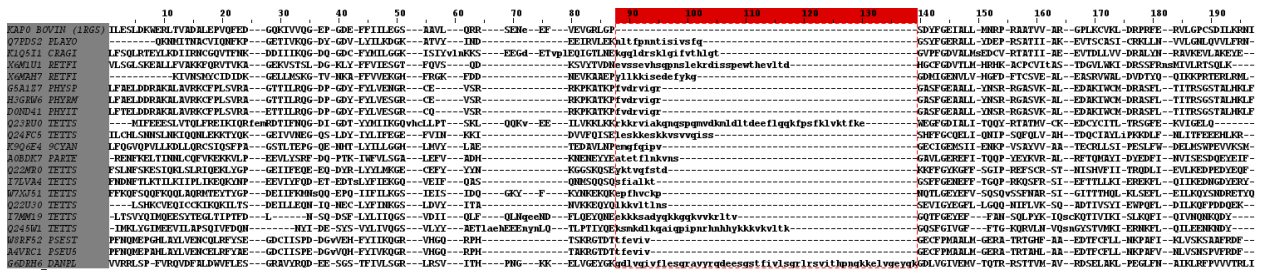
cGMP dependent protein kinase



cAMP dependent protein kinase regulatory chain



Supplementary Figure 1. Domain organization observed in pathogenic protein kinases and regulatory sub-domains with CNB domains. D/D: dimerization/docking domain of PKA-R.



Supplementary Figure 2. Alignment of *Plasmodium* CNB domains with inserts. The insert regions are highlighted in red. The first sequence in the alignment is the reference sequence (1RGS 2nd domain).