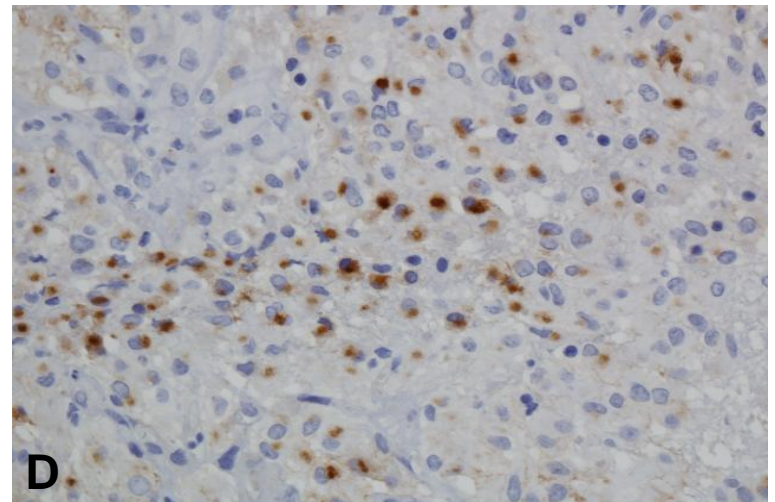
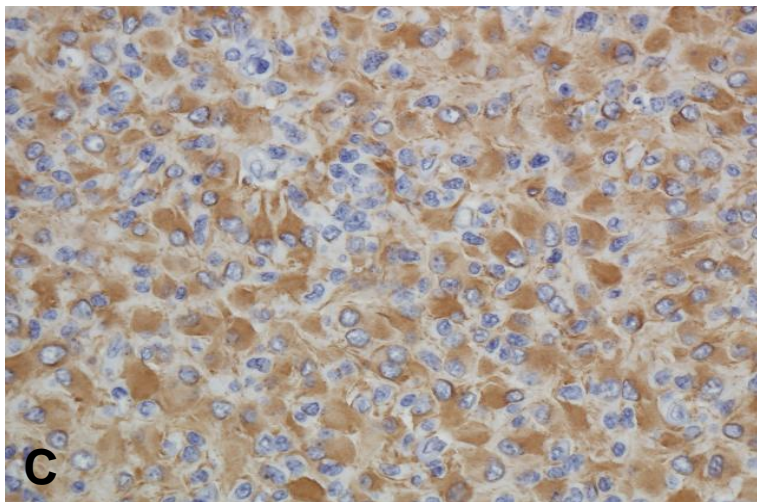
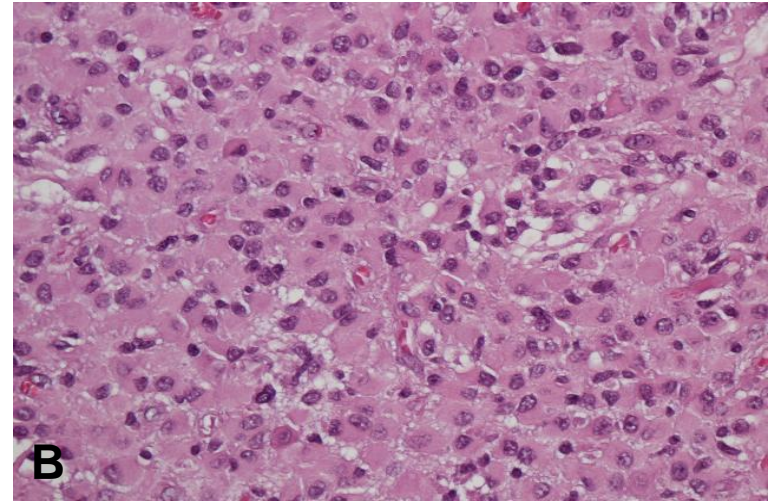
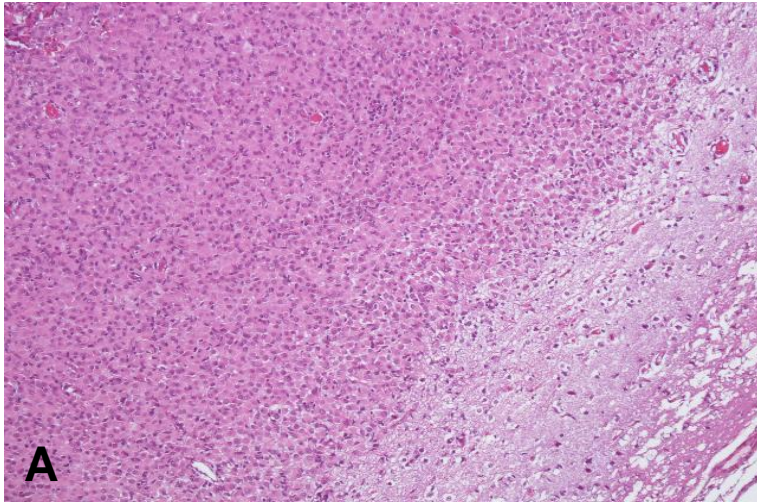


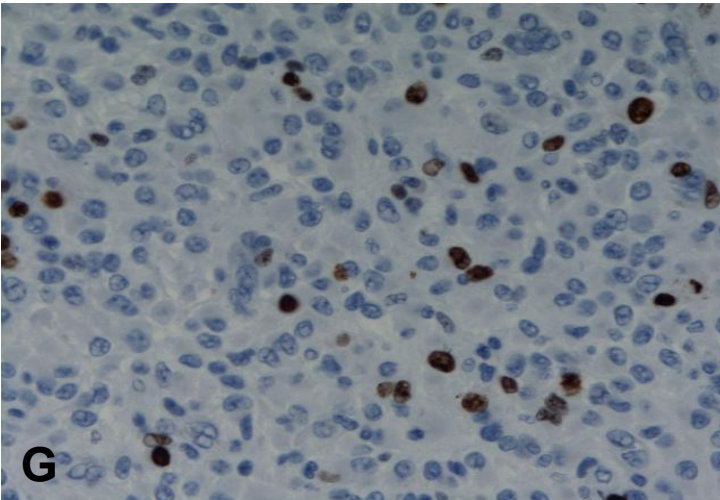
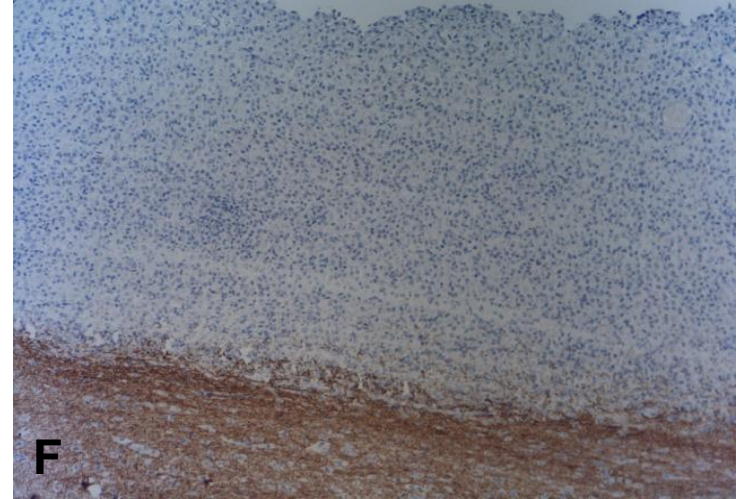
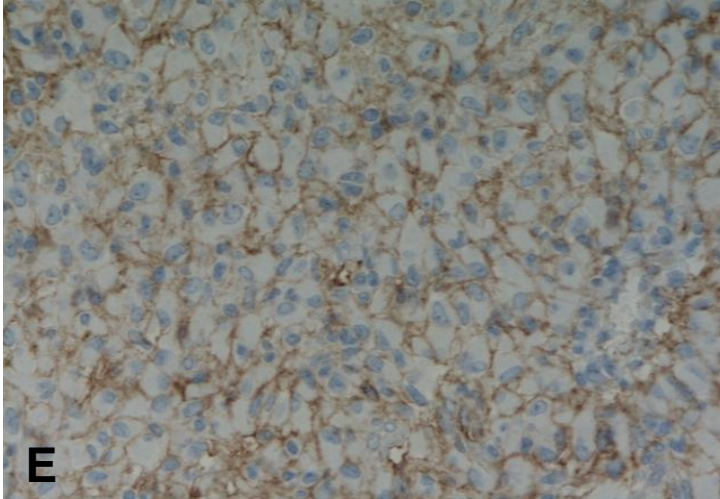
Supplementary material S3

- Histological images of two *ALK*-rearranged ependymal tumors
- From Olsen et al: Fusion genes with *ALK* as recurrent partner in ependymoma-like gliomas: a new brain tumor entity?

Case 1



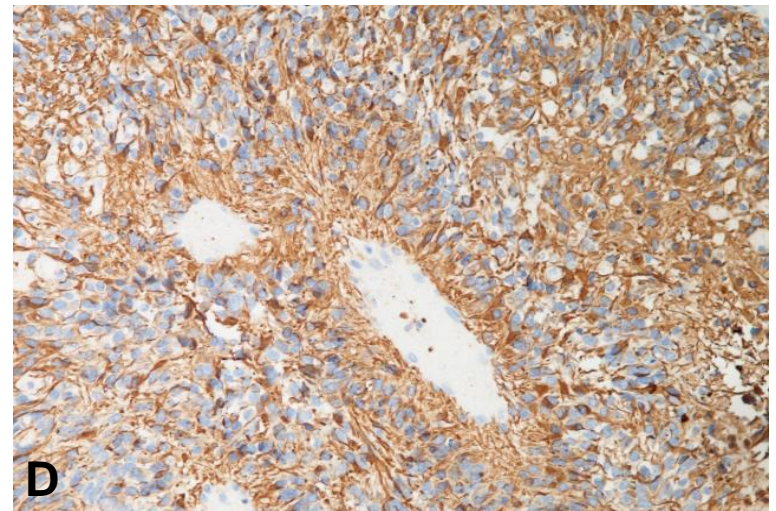
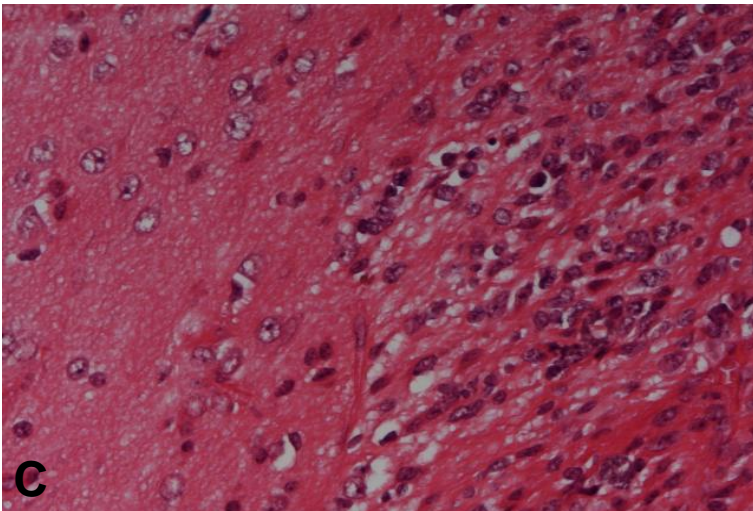
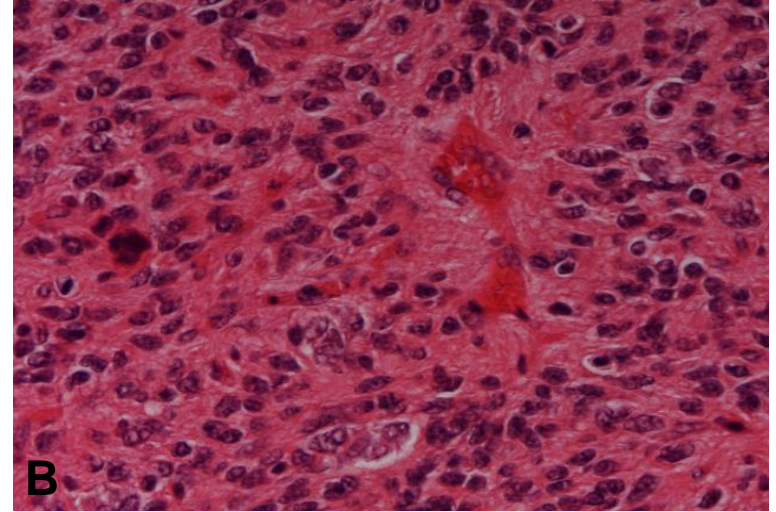
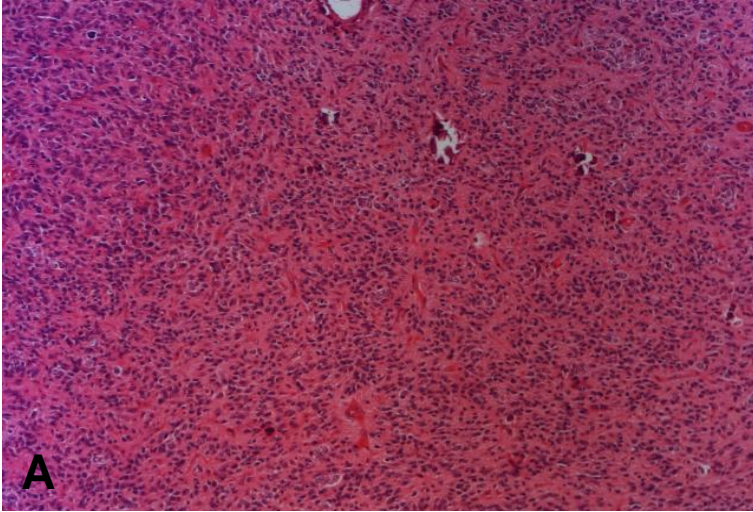
Case 1



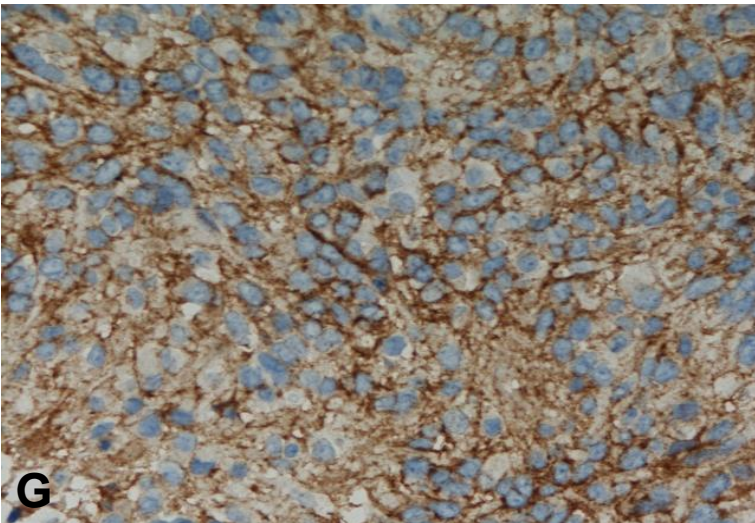
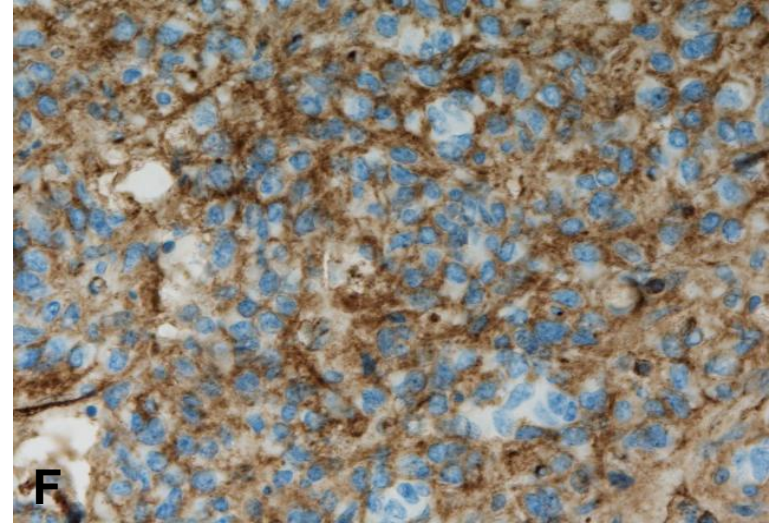
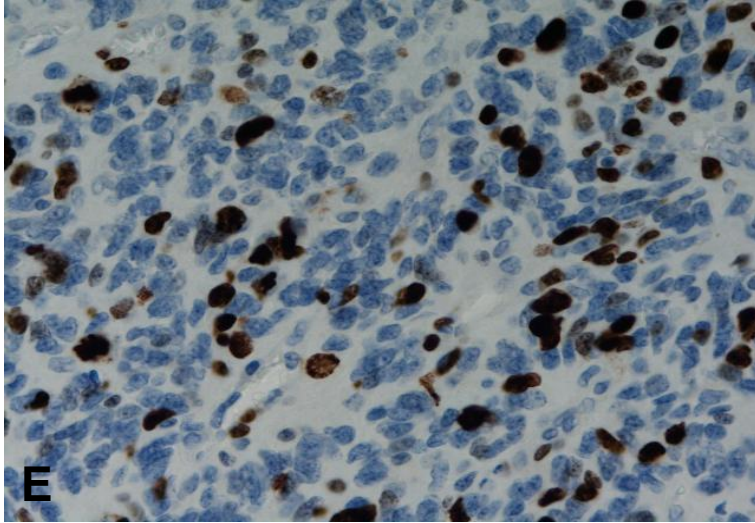
Case 1

- **A.** 100x. HE staining demonstrating a well-demarcated tumor.
- **B.** 400x. The tumor was composed of epitheloid glial cells.
- **C.** 400x. GFAP staining.
- **D.** 400x. EMA-positive intracytoplasmic dots were seen focally.
- **E.** 400x. CD99 stained the membranes of most tumor cells.
- **F.** 100x. Neurofilament staining demonstrating a well-demarcated tumor.
- **G.** 400x. Approximately 5% of tumor cells were Ki67-positive.

Case 2



Case 2



Case 2

- **A.** 100x. HE staining demonstrating perivascular pseudorosettes.
- **B.** 400x. HE staining demonstrating perivascular pseudorosettes.
- **C.** 400x. HE staining demonstrating a well-demarcated tumor.
- **D.** 400x. GFAP staining highlighting the pseudorosettes.
- **E.** 400x. The tumor had a high proportion of Ki67-positive cells.
- **F.** 400x. Some tumor cell membranes were CD99-positive.
- **G.** 400x. Some tumor cell membranes were EMA-positive.