

NCBI number access of reference sequences

HAstV	AB025806.1, AB037274.1, AF248738.2, AF260508.1, AY720891.1, AY720892.1, DQ028633.1, DQ070852.1, DQ344027.1, EF583300.1, FJ755405.1, GQ495608.1, GQ901902.2, GU732187.1, HM237363.1, HQ398856.2, JF491430.1, JN887820.1, JQ403108.1, JX087964.1, KF039910.1, KF039911.1, KF039913.1, KF211475.1, L23513.1, Y08632.2, Z46658.1, Z66541.1
NoV GI	KF039737.1, KF429789.1, KF429783.1, KF429774.1, KF429773.1, KF429761.1, KF429770.1, JX023285.1, KF306212.1, FJ515294.1, JN699050.1, JN699048.1, JQ743330.1, JN603244.1, JN183164.1, FJ711164.1, JN603273.1, JN603266.1, JN603259.1, JN603245.1, KJ402295.1, JN699046.1, KC998959.1, JN699045.1, JN222366.1, JQ388274.1, JN899243.1, JN183161.1, JN005886.1, GU299761.1, EU003970.1, KF586508.1, KF586507.1, JN183159.1
NoV GII	KC597151.1, KF429786.1, KF429764.1, JN797508.1, KJ407074.2, KC464505.1, JX846925.1, KC597138.1, KF429769.1, AB662863.1, KP064097.1, KF306213.1, JX846924.1, KC597140.1, KC597144.1, KF712510.1, KC175323.1, JX989074.1, KM272334.1, GU325839.2, JN699044.1, KJ407072.2, JX989075.1, KC832474.1, KF006266.1, JN699042.1, JF802498.1, JX846926.1, GU131223.1, EU494708.1, JX416401.1, KM349447.1, EU448331.1, EU448332.1, KP064099.1, KJ938995.1, AB810014.1, JX439807.1, JN899242.1, GU594162.1, GU017903.2, HM635108.1, KC207117.1, AB810002.1, KJ156329.1, KC597139.1, JN699043.1, EU448333.1, GQ149616.1, JX047017.1, JN899245.1, JF300333.1, HV321704.1, AB542917, EU373815, AY675554, AB542915

Table S 1: Reference sequences for HAstV, NoV GI and NoV GII used to OTUs identification.

Virus	Genotype	Number of identified acute gastroenteritis cases				Total
		Spring	Summer	Autumn	Winter	
HAstV	1	2	0	0	0	2
	2	1	0	0	3	4
	5	5	0	1	0	6
	Untypable	1	1	0	1	3
	Total	9	1	1	4	15
NoV GI	I.1	1	0	0	0	1
	I.2	1	0	0	2	3

	I.3	3	2	0	2	7
	I.4	1	0	0	1	2
	I.6	0	0	0	1	1
	I.8	1	0	0	0	1
	I.9	1	0	0	1	2
	I.b/I.4	0	0	0	1	1
	I.b/I.6	2	2	0	4	8
	I.f	1	0	0	0	1
	Untypable	6	0	1	4	11
	Total	17	4	1	16	38
	II.c/II.1	0	0	0	1	1
	II.2	2	0	2	5	9
	II.e/II.2	1	0	0	1	2
	II.3	0	0	0	1	1
	II.4 2006a	2	1	0	1	4
	II.4 2006b	2	0	0	1	3
	II.4 2009	5	2	3	4	14
	II.4 2012	36	12	15	68	131
NoV GII	II.6	12	1	11	18	42
	II.7	0	2	1	1	4
	II.10	0	1	0	0	1
	II.16	0	1	0	0	1
	II.7/II.6	0	1	1	2	4
	II.g/II.12	1	1	1	2	5
	II.14	0	1	1	0	2
	II.17	3	0	0	1	4
	II.21/II.3	4	1	2	3	10

Untypable	2	3	3	10	18
Total	70	27	40	119	256

Table S 2: Number of identified acute gastroenteritis cases whose origin is linked to AstV, NoV GI and NoV GII in France between May 2013 and May 2014.

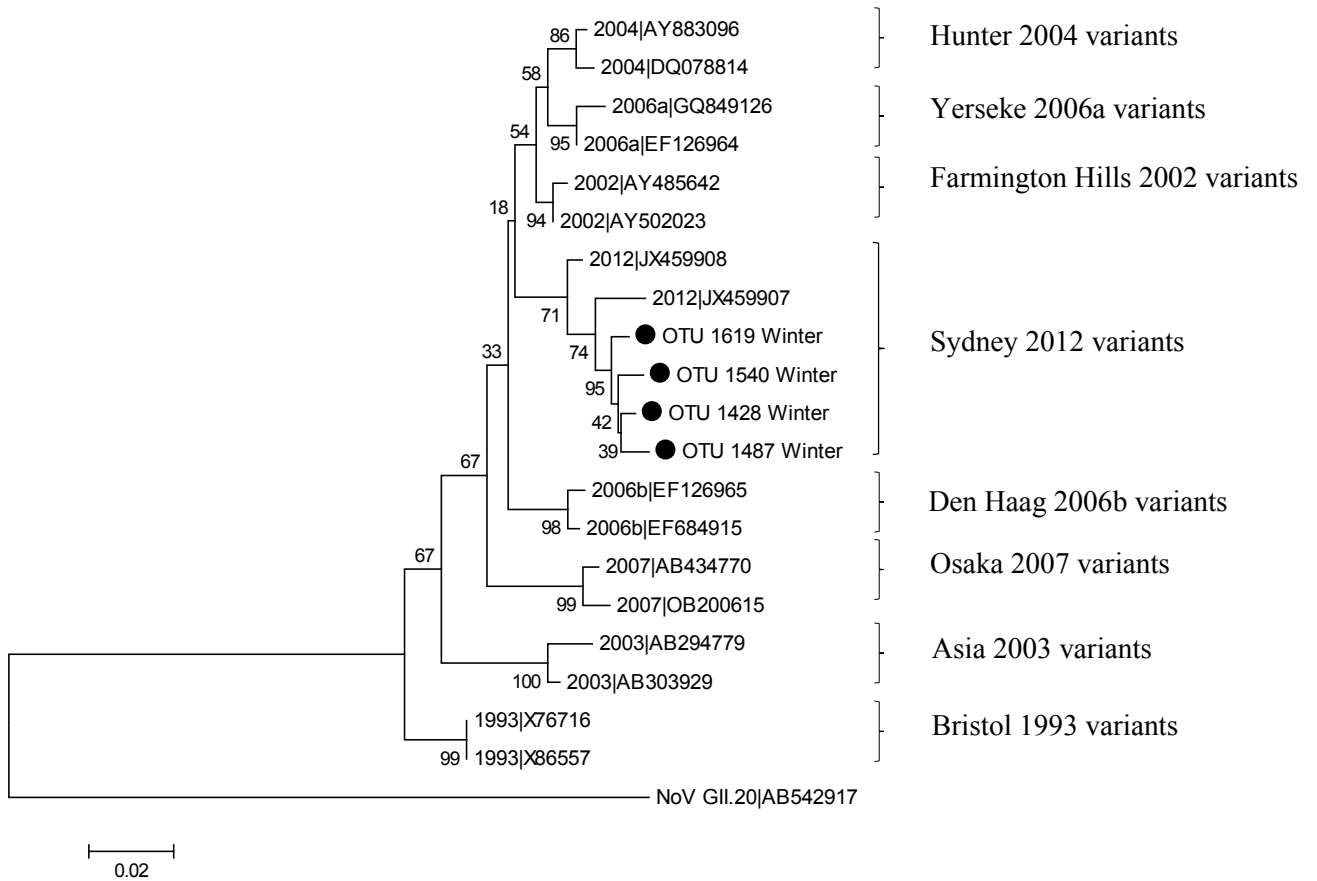


Figure S 1: Phylogenetic trees based on nucleotide sequences (302 nucleotides) of NoV GII.4 variants. The trees were constructed by the neighbor-joining method. Numbers of each branch indicate the bootstrap values obtained from 1000 replicates. Sequences. ● represents 4 major OTUs in winter.