

# Supplementary Information

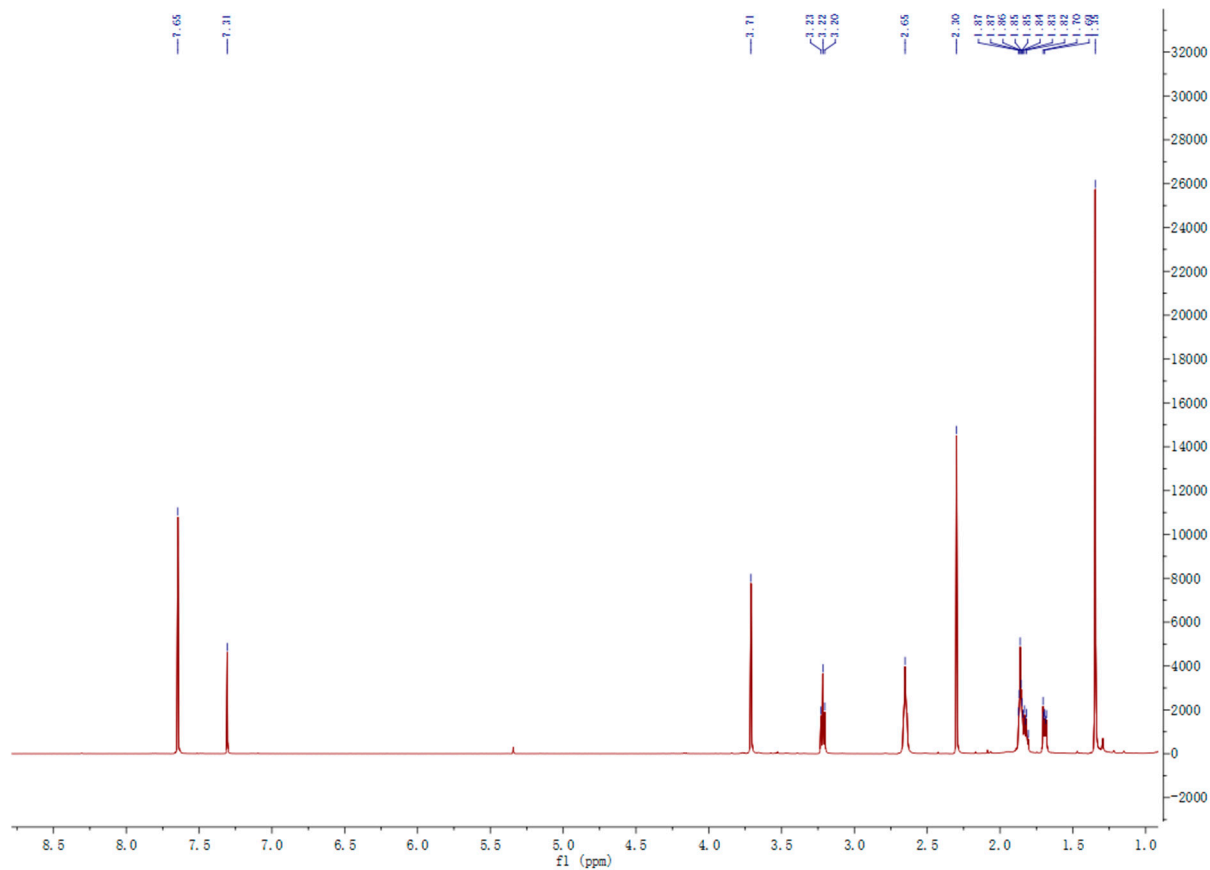


Figure S1. <sup>1</sup>H NMR of compound A.

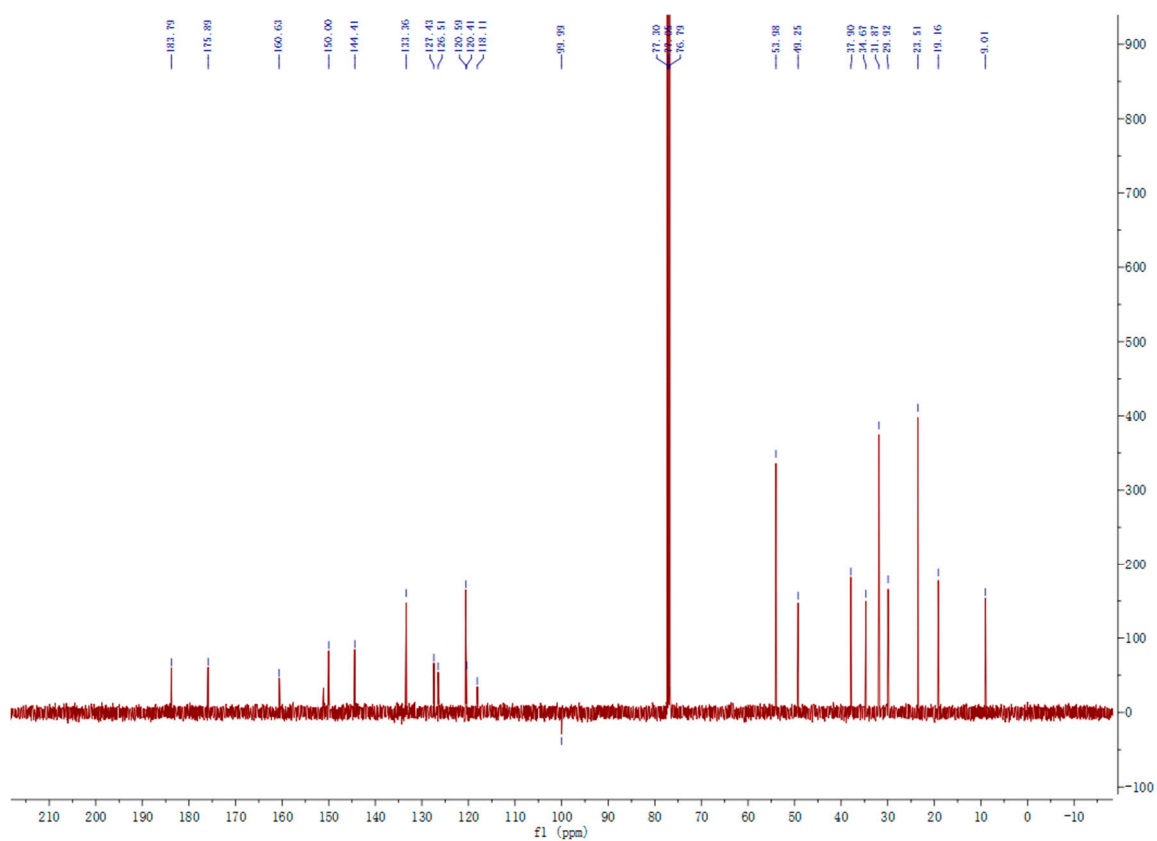


Figure S2. <sup>13</sup>C NMR of compound A.

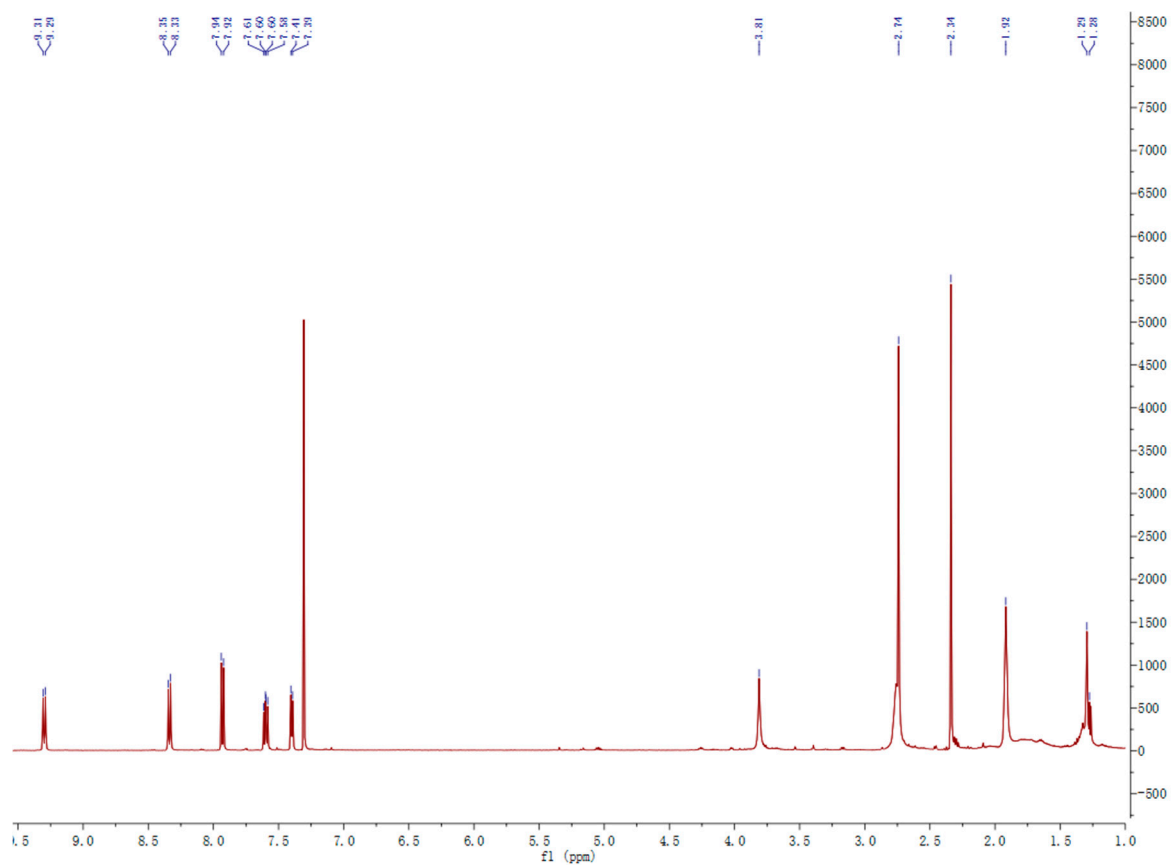


Figure S3. <sup>1</sup>H NMR of compound B.

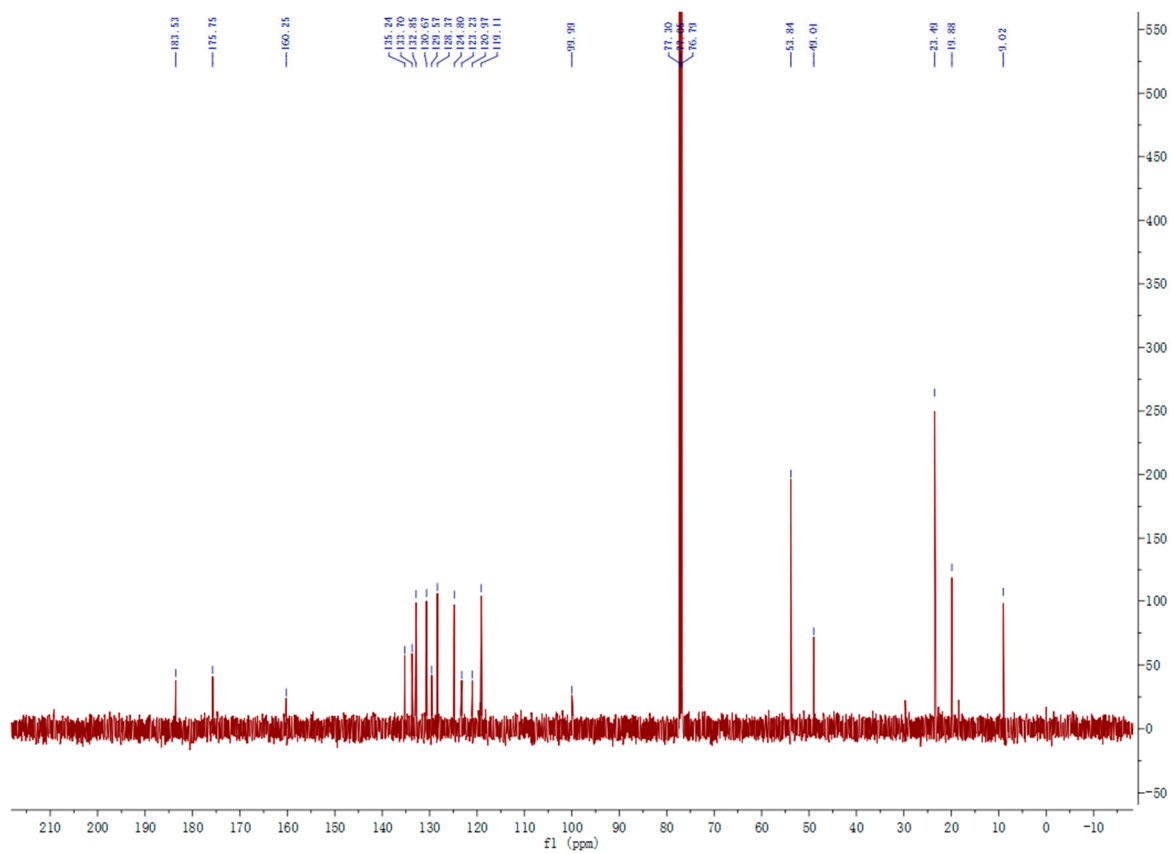


Figure S4. <sup>13</sup>C NMR of compound B.

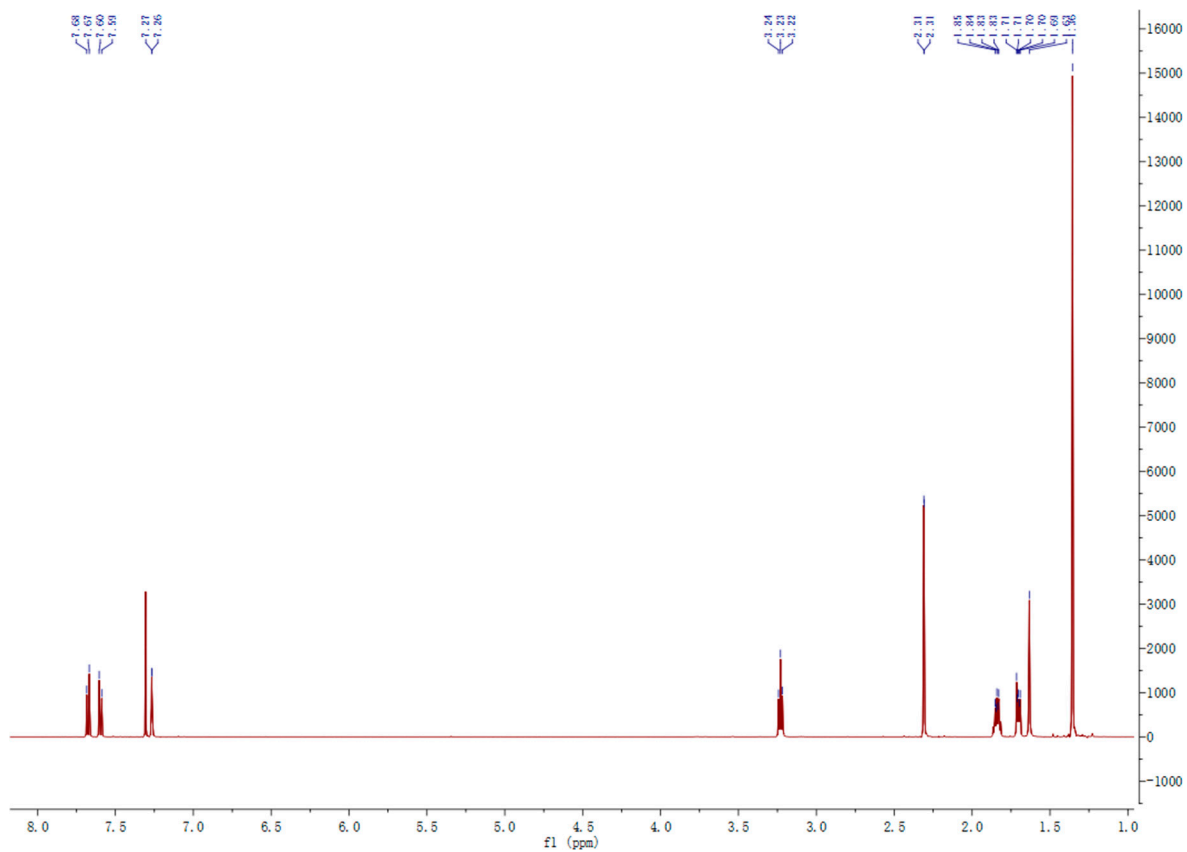


Figure S5. <sup>1</sup>H NMR of Tanshinone IIA.

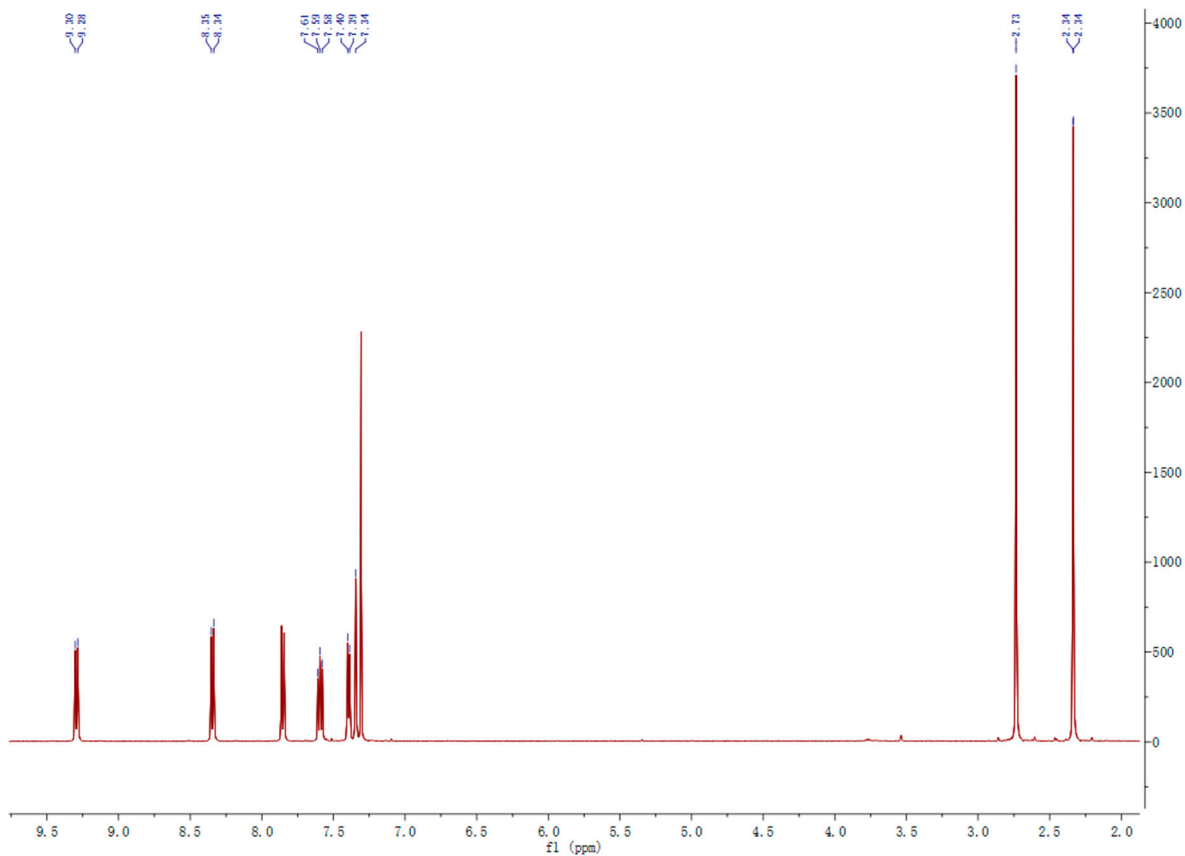
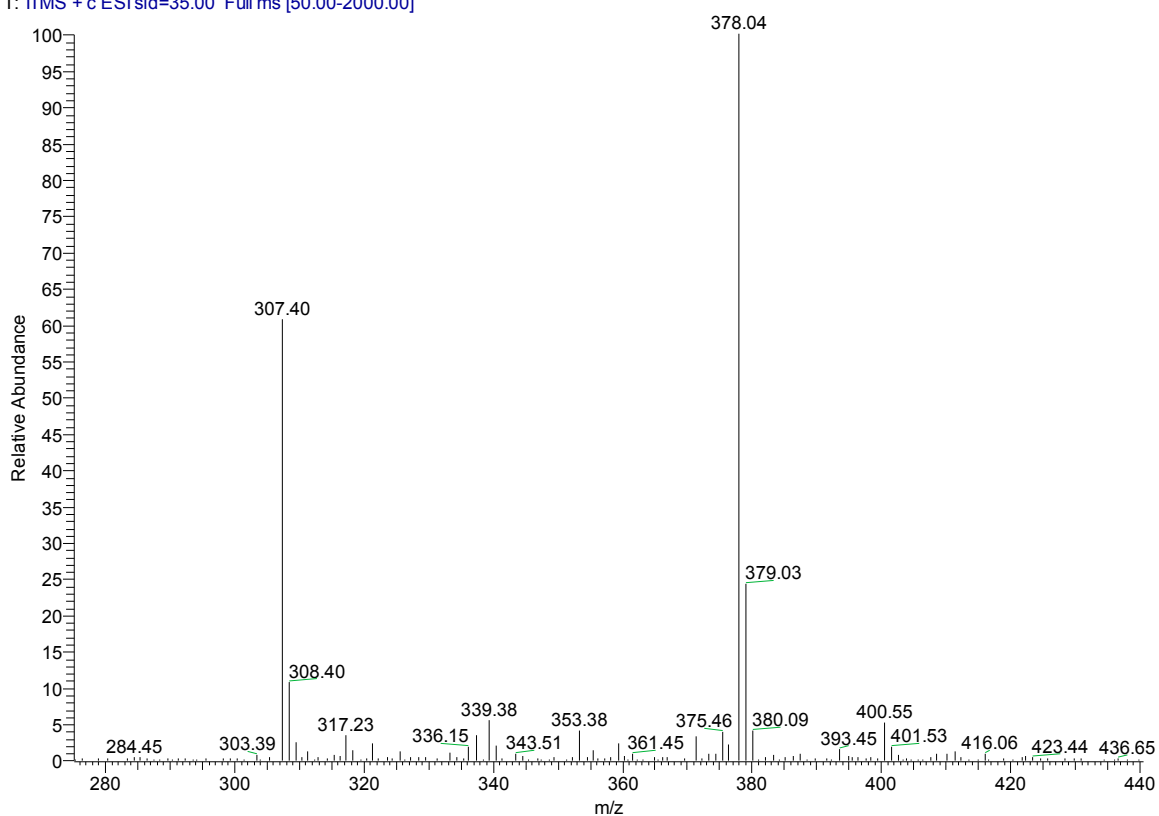


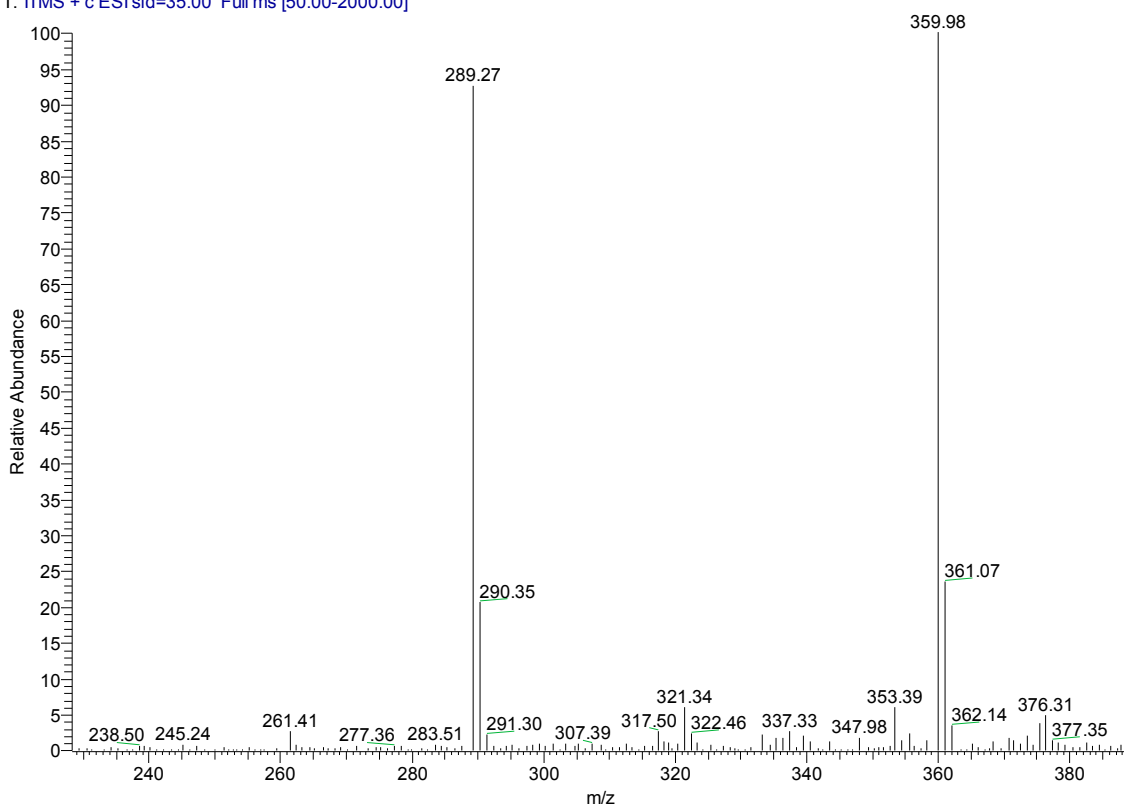
Figure S6. <sup>1</sup>H NMR of Tanshinone I.

[DJY]--T2P #1-4 RT: 0.00-0.01 AV: 4 NL: 1.50E5  
T: ITMS + c ESI sid=35.00 Full ms [50.00-2000.00]



**Figure S7.** MS of Compound A.

[DJY]--T1P #43-47 RT: 0.30-0.32 AV: 5 NL: 2.00E5  
T: ITMS + c ESI sid=35.00 Full ms [50.00-2000.00]



**Figure S8.** MS of Compound B.