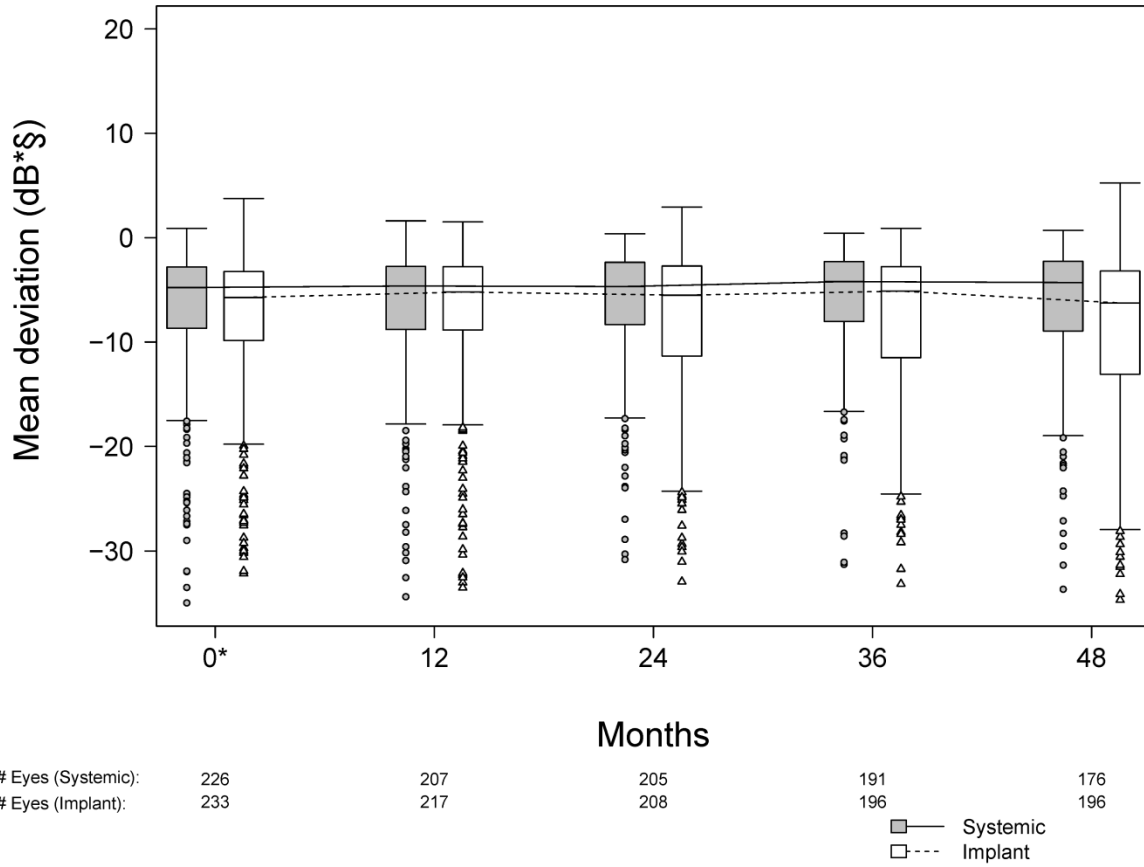


Figure 3. Distribution of mean deviation at annual visits for eyes with uveitis assigned to implant (grey) and systemic (white) therapy during the first 48 months of follow-up in the Multicenter Uveitis Steroid Treatment (MUST) Trial and Follow-up Study.



* Calculated from the subset of eyes with uveitis at enrollment.
 § Visual field automated perimetry: mean deviation