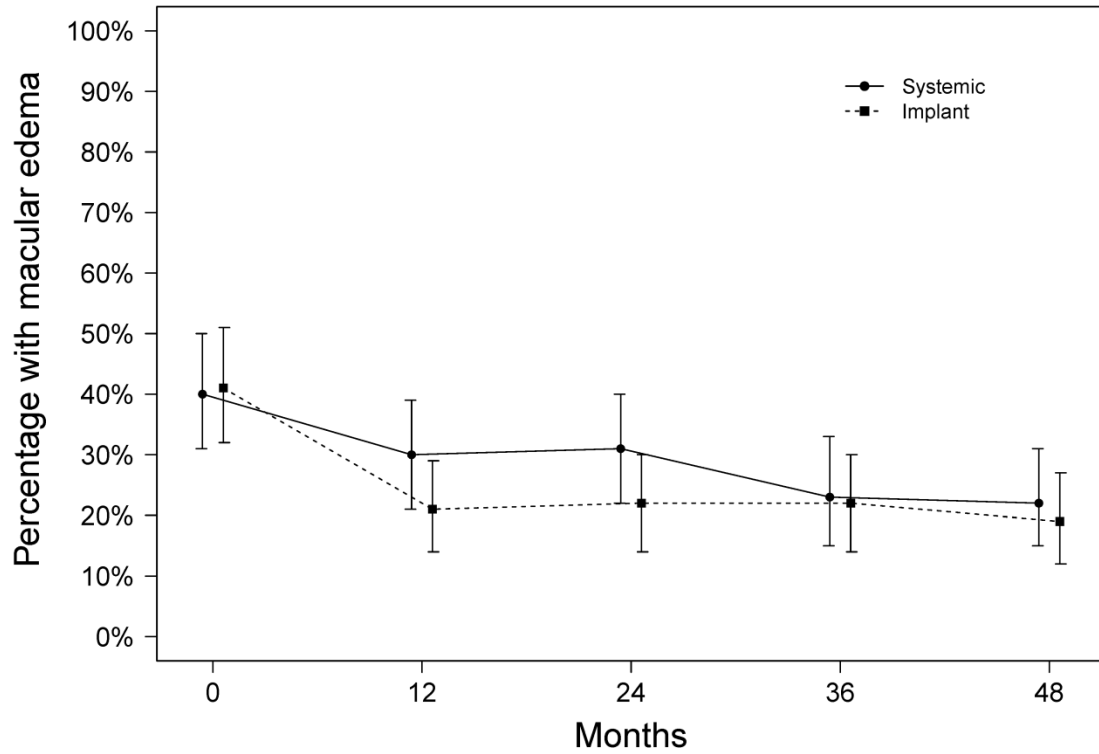


Figure 8. Proportion of uveitic eyes with macular edema for those assigned to implant (dotted line) and systemic (solid line) therapy during the first 48 months of follow-up in the Multicenter Uveitis Steroid Treatment (MUST) Trial and Follow-up Study.



# Eyes at risk (Systemic):	216	182	197	174	171
# Eyes at risk (Implant):	220	203	206	183	170