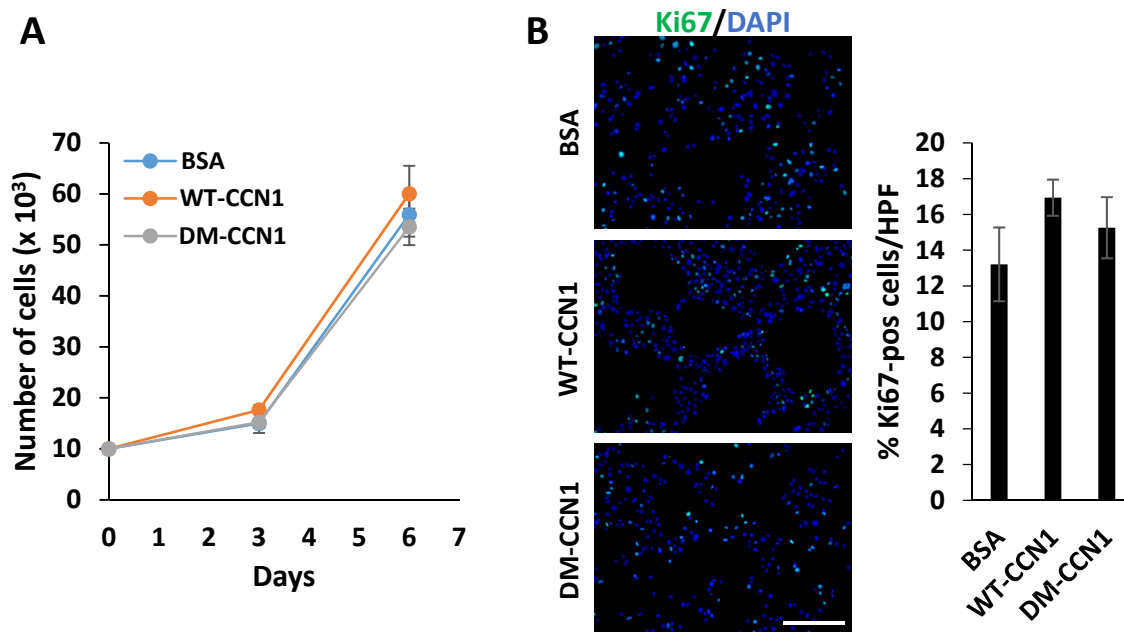


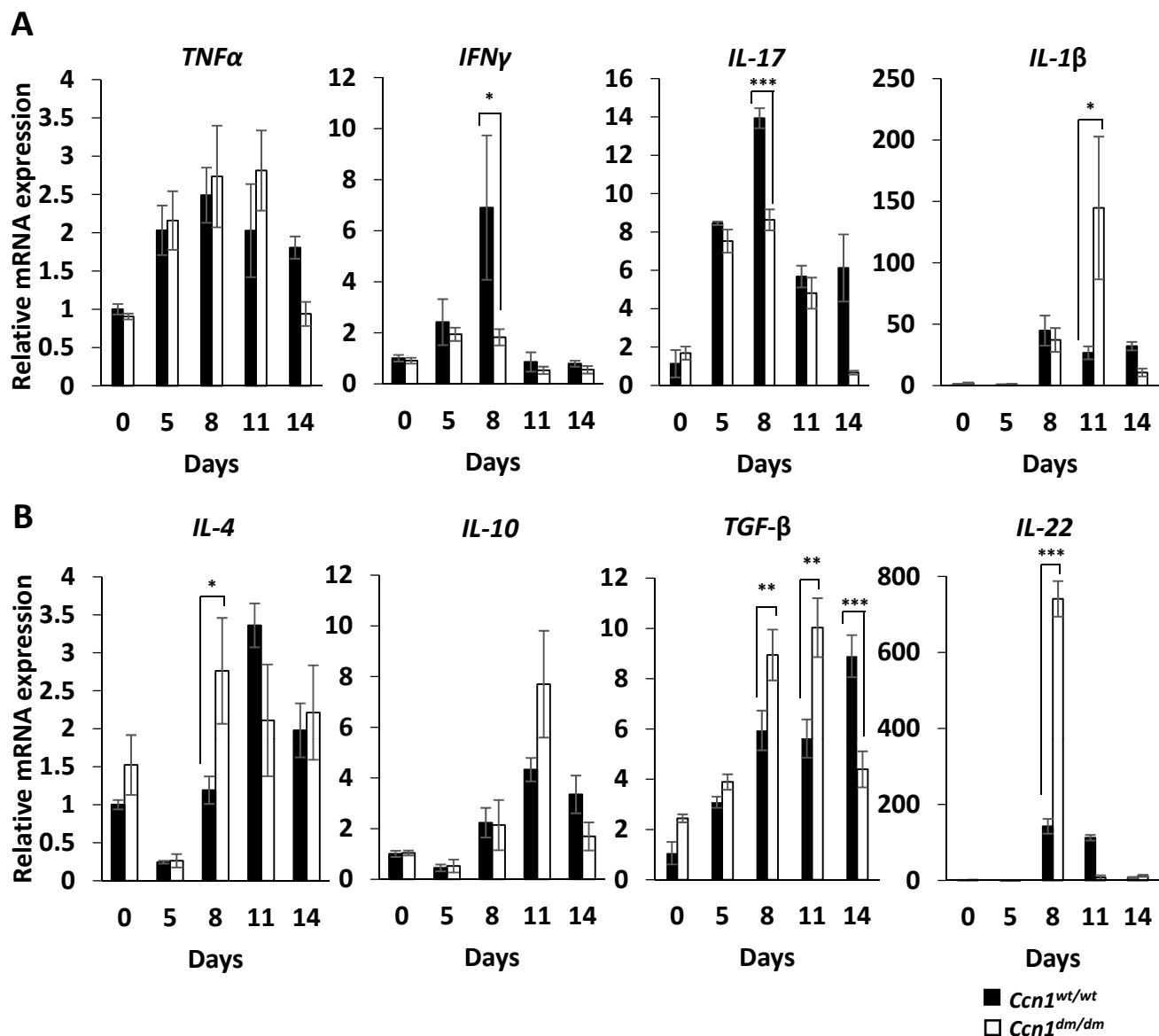
Supplementary Figure S1. CCN1 expression is increased in murine colitis.

(A) Distal colon sections of untreated and 5% DSS-challenged wild type mice were stained for CCN1 by immunohistochemistry to evaluate CCN1 expression and localization. Colonic sections were counterstained with hematoxylin. Scale bar=50 μ m. (B) GFP immunofluorescence microscopy was performed in normal and DSS-challenged CCN1-EGFP colons and counterstained with DAPI. Scale bar=100 μ m. *Ccn1* mRNA in the colon of wild type mice challenged with (C) 5% DSS or (D) 3.5% DSS for 5 days was measured by qRT-PCR at indicated times, and normalized to healthy wild type colon with *cyclophilin E* as internal reference. Sequences of primers used are shown in supplementary table 1. Data shown as mean \pm SD; $n=3$; * $P < 0.01$.



Supplementary Figure S2. CCN1 does not directly induce IEC proliferation.

YAMC cells were grown in presence of 10 $\mu\text{g/ml}$ of BSA, WT-CCN1, or DM-CCN1 for indicated days in culture. (A) Cells were trypsinized, stained with 1% trypan blue and counted using a hemocytometer. (B) Cells were treated with BSA, WT-CCN1, or DM-CCN1 for 24 hrs and immunostained for Ki67. Number of Ki67-positive cells were counted and normalized to the total number of cells (right). Data shown as mean \pm SD of triplicate experiments.



Supplementary Figure S3. Cytokine expression in DSS-challenged wild type and *Ccn1*^{dm/dm} mice. (A) Pro-inflammatory (*TNF α* , *IFN γ* , *IL-17*, *IL-1 β*) and (B) anti-inflammatory (*IL-4*, *IL-10*, *TGF- β*) cytokines, and mucosal healing (*IL-22*) gene expression was measured on day 5, 8, 11 and 14 from isolated colon RNA of 3.5% DSS-challenged wild type and *Ccn1*^{dm/dm} mice by qRT-PCR. Sequences of primers used are shown in supplementary table 1. Data are represented as mean \pm SD; $n=3-4$; * $p<0.05$, ** $p<0.01$, *** $p<0.001$.

Gene	qPCR Sense Primer (5' to 3')	qPCR Antisense Primer (5' to 3')
<i>Tnfa</i>	CATCTTCTCAAATTCGAGTGACAA	TGGGAGTAGACAAGGTACAACCC
<i>Ifny</i>	TCAAGTGGCATAGATGTGGAAGAA	TGGCTCTGCAGGATTTTCATG
<i>Il17</i>	ACCGCAATGAAGACCCTGAT	TCCCTCCGCATTGACACA
<i>Il4</i>	ACAGGAGAAGGGACGCCAT	GAAGCCCTACAGACGAGCTCA
<i>Il1β</i>	CAACCAACAAGTGATATTCTCCATG	GATCCACACTCTCCAGCTGCA
<i>Il6</i>	GAGGATACCACTCCCAACGAGCC	AAGTGCATCATCGTTGTTCATACA
<i>Il10</i>	GGTTGCCAAGCCTTATCGGA	ACCTGCTCCACTGCCTTGCT
<i>Il22</i>	AGAACGTCTTCCAGGGTGAA	TCCGAGGAGTCAGTGCTAAA
<i>Tgfβ</i>	TGACGTCACTGGAGTTGTACGG	GGTTCATGTCATGGATGGTGTC
<i>Ccn1</i>	GGAGGTGGAGTTAACGAGAAAC	GTGGTCTGAACGATGCATTTTC
<i>CypE</i>	TTCACAAACCACAATGGCACAGGG	TGCCGTCCAGCCAATCTGTCTTAT
<i>IL6</i>	AAATTCGGTACATCCTCGACGGCA	AGTGCCTCTTTGCTGCTTTCACAC
<i>CYPE</i>	GCAGACAAGGTCCCAAAGACA	CACCCTGACACATAAACCCCTG

Supplementary Table 1. List of primer sequences used for qRT-PCR.