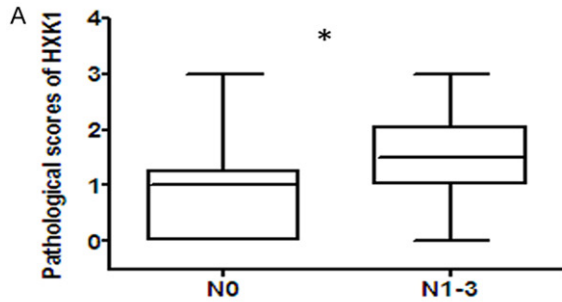
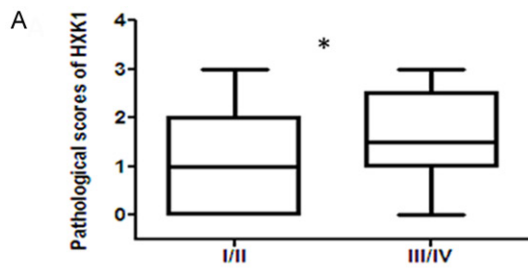
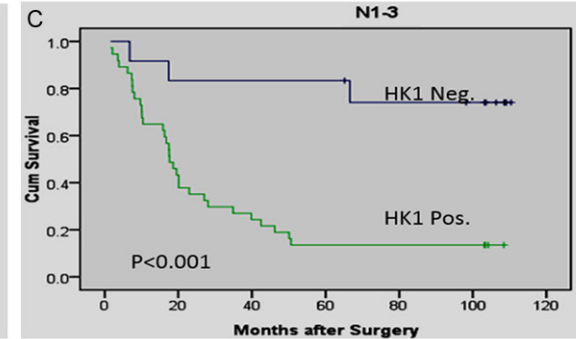
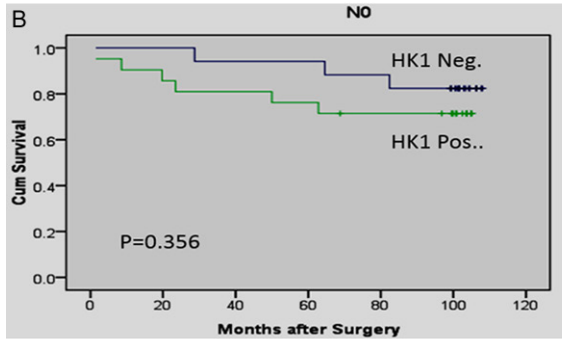


## Prognostic value of HK1 and PKM2 in gastric cancer



**Figure S1.** Subgroup analysis of HK1 according to regional lymph node metastasis. A. The intensity of HK1 staining in GC patients with or without lymph node metastasis. \* $P < 0.05$ . B. In patients without regional lymph node metastasis, no significant difference was observed between patients with high HK1 expression (OS, 82.9 mo) and those with low HK1 expression (OS, 99.3 mo;  $P = 0.356$ ). C. In groups with regional lymph node metastasis, survival durations were significantly longer in patients with low expression of HK1 (OS, 89.9 mo) than in those with high HK1 expression (OS, 31.1 mo;  $P < 0.001$ ).



**Figure S2.** Subgroup analysis of HK1 according to TNM stage. A. The intensity of HK1 staining in GC patients at stage I/II and at stage III/IV. \* $P < 0.05$ . B. In patients at stage I/II, no significant difference was observed between patients with high HK1 expression (OS, 85 mo) and those with low HK1 expression (OS, 101 mo;  $P = 0.153$ ). C. In groups at stage III/IV, survival durations were significantly longer in patients with low expression of HK1 (OS, 79 mo) than in those with high HK1 expression (OS, 23 mo;  $P < 0.001$ ).

