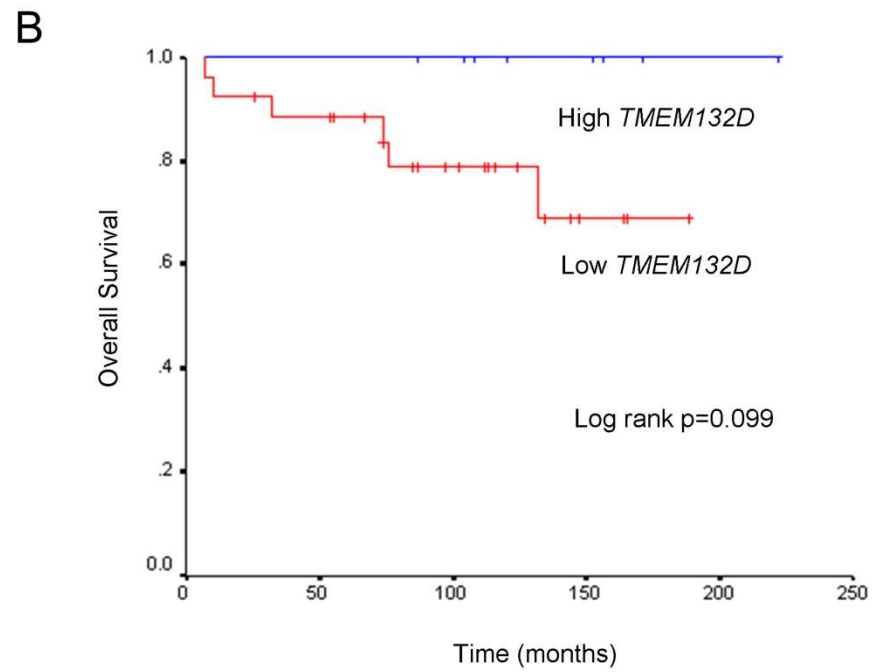
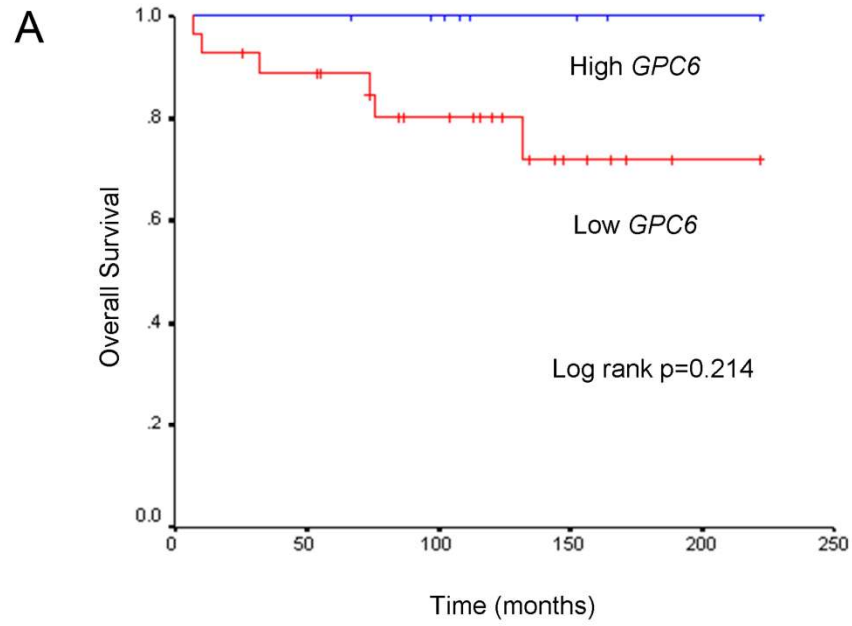


Figure S1



**Table S1: Association of *GPC6* mRNA level with the stage, grade and histotype of the 35 early stage tumors.**

	Stage		Grade			Histological subtype		
	I	II	0-1	2	3	Endometrioid	Serous	Clear cell
<b><i>GPC6</i> high (N=7)</b>	6 (21.4%)	1 (14.3%)	5 (35.7%)	1 (12.5%)	1 (7.7%)	6 (30%)	1 (9.1%)	0 (0%)
<b><i>GPC6</i> low (N=28)</b>	22 (78.6%)	6 (85.7%)	9 (64.3%)	7 (87.5%)	12 (92.3%)	14 (70%)	10 (90.0%)	4 (100%)
Total N=35								
p-value (chi-square)	0.673		0.159			0.216		

The relationship of high or low mRNA levels of *GPC6* with clinicopathologic characteristics (stage, grade, histotype) were analyzed by Chi-squared test. Statistically significant associations were not observed.

**Table S2: Association of *TMEM132D* mRNA level with the stage, grade and histotype of the 35 early stage tumors.**

	Stage		Grade			Histological subtype		
	I	II	0-1	2	3	Endometrioid	Serous	Clear cell
<b><i>TMEM132D</i> high (N=9)</b>	7 (25%)	2 (28.6%)	3 (21.4%)	4 (50%)	2 (15.4%)	6 (30%)	2 (18.2%)	1 (25%)
<b><i>TMEM132D</i> low (N=26)</b>	21 (75%)	5 (71.4%)	11 (78.6%)	4 (50%)	11 (84.6%)	14 (70%)	9 (81.8%)	3 (75%)
Total N=35								
p-value (chi-square)	0.847		0.189			0.771		

The relationship of high or low mRNA levels of *TMEM132D* with clinicopathologic characteristics (stage, grade, histotype) were analyzed by Chi-squared test. Statistically significant associations were not observed.