

Supplementary Material

Anthropogenic debris in seafood: Plastic debris and fibers from textiles in fish and bivalves sold for human consumption

Rochman, Chelsea M^{1*}; Tahir, Akbar²; Williams, Susan L.³; Baxa, Dolores V¹; Lam, Rosalyn¹; Miller, Jeffrey T⁴; Teh, Foo-Ching¹; Werorilangi, Shinta²; Teh, Swee J¹

¹Aquatic Health Program, School of Veterinary Medicine, University of California, Davis, Davis, CA 95616, USA.

²Department of Marine Science, Faculty Marine and Fisheries Sciences, University of Hasanuddin, Makassar 90245, Indonesia.

³Bodega Marine Laboratory and Department of Evolution and Ecology, University of California at Davis, Bodega Bay, CA 94923, USA

⁴Department of Environmental Toxicology, University of California, Davis, Davis, CA, 95616, USA

Table of Contents

Table S1. Data from each individual fish sampled from Indonesia

Table S2. Data from each individual fish sampled from USA

Table S3. Type and size of anthropogenic debris sampled from Indonesia

Table S4. Type and size of anthropogenic debris sampled from the USA

Figure S1. Images of individual pieces of anthropogenic debris found in samples from Indonesia.

Figure S2. Images of individual pieces of anthropogenic debris found in samples from California.

47 **Table S1. Data from each individual fish sampled from Indonesia**

Sample #	Location	common name (<i>Genus, species</i>)	No. Pieces of Anthropogenic Debris	No. Pieces of Plastic Debris	No. of Fibers
1	Makassar, Indonesia	tilapia (<i>Oreochromis niloticus</i>)	0	0	0
2	Makassar, Indonesia	tilapia (<i>Oreochromis niloticus</i>)	0	0	0
3	Makassar, Indonesia	tilapia (<i>Oreochromis niloticus</i>)	0	0	0
4	Makassar, Indonesia	tilapia (<i>Oreochromis niloticus</i>)	0	0	0
5	Makassar, Indonesia	tilapia (<i>Oreochromis niloticus</i>)	0	0	0
6	Makassar, Indonesia	skipjack tuna (<i>Katsuwonus pelamis</i>)	0	0	0
7	Makassar, Indonesia	skipjack tuna (<i>Katsuwonus pelamis</i>)	0	0	0
8	Makassar, Indonesia	skipjack tuna (<i>Katsuwonus pelamis</i>)	0	0	0
9	Makassar, Indonesia	skipjack tuna (<i>Katsuwonus pelamis</i>)	0	0	0
10	Makassar, Indonesia	skipjack tuna (<i>Katsuwonus pelamis</i>)	0	0	0
11	Makassar, Indonesia	skipjack tuna (<i>Katsuwonus pelamis</i>)	0	0	0
12	Makassar, Indonesia	skipjack tuna (<i>Katsuwonus pelamis</i>)	0	0	0
13	Makassar, Indonesia	skipjack tuna (<i>Katsuwonus pelamis</i>)	0	0	0
14	Makassar, Indonesia	skipjack tuna (<i>Katsuwonus pelamis</i>)	0	0	0
15	Makassar, Indonesia	indian Mackerel (<i>Rastrelliger kanagurta</i>)	2	2	0
16	Makassar, Indonesia	indian Mackerel (<i>Rastrelliger kanagurta</i>)	0	0	0
17	Makassar, Indonesia	indian Mackerel (<i>Rastrelliger kanagurta</i>)	1	1	0
18	Makassar, Indonesia	indian Mackerel (<i>Rastrelliger kanagurta</i>)	1	1	0
19	Makassar, Indonesia	indian Mackerel (<i>Rastrelliger kanagurta</i>)	0	0	0
20	Makassar, Indonesia	indian Mackerel (<i>Rastrelliger kanagurta</i>)	2	2	0
21	Makassar, Indonesia	indian Mackerel (<i>Rastrelliger kanagurta</i>)	3	3	0
22	Makassar, Indonesia	indian Mackerel (<i>Rastrelliger kanagurta</i>)	0	0	0
23	Makassar, Indonesia	indian Mackerel (<i>Rastrelliger kanagurta</i>)	0	0	0
24	Makassar, Indonesia	shortfin scad (<i>Decapterus macrosoma</i>)	0	0	0
25	Makassar, Indonesia	shortfin scad (<i>Decapterus macrosoma</i>)	2	2	0
26	Makassar, Indonesia	shortfin scad (<i>Decapterus macrosoma</i>)	17	17	0
27	Makassar, Indonesia	shortfin scad (<i>Decapterus macrosoma</i>)	21	21	0
28	Makassar, Indonesia	shortfin scad (<i>Decapterus macrosoma</i>)	0	0	0
29	Makassar, Indonesia	shortfin scad (<i>Decapterus macrosoma</i>)	1	1	0
30	Makassar, Indonesia	shortfin scad (<i>Decapterus macrosoma</i>)	1	1	0
31	Makassar, Indonesia	shortfin scad (<i>Decapterus macrosoma</i>)	0	0	0
32	Makassar, Indonesia	shortfin scad (<i>Decapterus macrosoma</i>)	0	0	0
33	Makassar, Indonesia	shortfin scad (<i>Decapterus macrosoma</i>)	0	0	0
34	Makassar, Indonesia	shortfin scad (<i>Decapterus macrosoma</i>)	0	0	0
35	Makassar, Indonesia	shortfin scad (<i>Decapterus macrosoma</i>)	0	0	0
36	Makassar, Indonesia	shortfin scad (<i>Decapterus macrosoma</i>)	0	0	0
37	Makassar, Indonesia	shortfin scad (<i>Decapterus macrosoma</i>)	0	0	0
38	Makassar, Indonesia	shortfin scad (<i>Decapterus macrosoma</i>)	0	0	0
39	Makassar, Indonesia	shortfin scad (<i>Decapterus macrosoma</i>)	0	0	0
40	Makassar, Indonesia	shortfin scad (<i>Decapterus macrosoma</i>)	0	0	0
41	Makassar, Indonesia	herring (<i>Spratelloides gracilis</i>)	0	0	0
42	Makassar, Indonesia	herring (<i>Spratelloides gracilis</i>)	5	5	0
43	Makassar, Indonesia	herring (<i>Spratelloides gracilis</i>)	1	1	0
44	Makassar, Indonesia	herring (<i>Spratelloides gracilis</i>)	0	0	0
45	Makassar, Indonesia	herring (<i>Spratelloides gracilis</i>)	0	0	0
46	Makassar, Indonesia	herring (<i>Spratelloides gracilis</i>)	3	3	0
47	Makassar, Indonesia	herring (<i>Spratelloides gracilis</i>)	0	0	0
48	Makassar, Indonesia	herring (<i>Spratelloides gracilis</i>)	0	0	0
49	Makassar, Indonesia	herring (<i>Spratelloides gracilis</i>)	2	2	0
50	Makassar, Indonesia	herring (<i>Spratelloides gracilis</i>)	0	0	0
51	Makassar, Indonesia	family Carangidae (??, ??)	10	10	0
52	Makassar, Indonesia	family Carangidae (??, ??)	5	5	0
53	Makassar, Indonesia	family Carangidae (??, ??)	0	0	0
54	Makassar, Indonesia	family Carangidae (??, ??)	14	14	0
55	Makassar, Indonesia	family Carangidae (??, ??)	5	5	0
56	Makassar, Indonesia	family Carangidae (??, ??)	0	0	0
57	Makassar, Indonesia	family Carangidae (??, ??)	7	7	0
58	Makassar, Indonesia	rabbitfish (<i>Siganus argenteus</i>)	1	1	0
59	Makassar, Indonesia	rabbitfish (<i>Siganus argenteus</i>)	0	0	0
60	Makassar, Indonesia	rabbitfish (<i>Siganus fuscescens</i>)	0	0	0
61	Makassar, Indonesia	rabbitfish (<i>Siganus fuscescens</i>)	0	0	0
62	Makassar, Indonesia	rabbitfish (<i>Siganus canaliculatus</i>)	0	0	0
63	Makassar, Indonesia	rabbitfish (<i>Siganus canaliculatus</i>)	1	1	0
64	Makassar, Indonesia	rabbitfish (<i>Siganus canaliculatus</i>)	0	0	0
65	Makassar, Indonesia	humpback red snapper (<i>Lutjanus gibbus</i>)	0	0	0
66	Makassar, Indonesia	humpback red snapper (<i>Lutjanus gibbus</i>)	0	0	0
67	Makassar, Indonesia	humpback red snapper (<i>Lutjanus gibbus</i>)	0	0	0
68	Makassar, Indonesia	humpback red snapper (<i>Lutjanus gibbus</i>)	0	0	0
69	Makassar, Indonesia	humpback red snapper (<i>Lutjanus gibbus</i>)	0	0	0
70	Makassar, Indonesia	oxeye scad (<i>Selar boops</i>)	0	0	0
71	Makassar, Indonesia	oxeye scad (<i>Selar boops</i>)	0	0	0
72	Makassar, Indonesia	oxeye scad (<i>Selar boops</i>)	0	0	0
73	Makassar, Indonesia	oxeye scad (<i>Selar boops</i>)	0	0	0
74	Makassar, Indonesia	oxeye scad (<i>Selar boops</i>)	0	0	0
75	Makassar, Indonesia	oxeye scad (<i>Selar boops</i>)	0	0	0
76	Makassar, Indonesia	oxeye scad (<i>Selar boops</i>)	0	0	0

49 **Table S2. Data from each individual fish and bivalve sampled from USA**

Sample #	Location	common name (<i>Genus, species</i>)	No. Pieces of Anthropogenic Debris	No. Pieces of Plastic Debris	No. of Fibers
1	California, USA	pacific oyster (<i>Crassostrea gigas</i>)	0	0	0
2	California, USA	pacific oyster (<i>Crassostrea gigas</i>)	2	0	2
3	California, USA	pacific oyster (<i>Crassostrea gigas</i>)	0	0	0
4	California, USA	pacific oyster (<i>Crassostrea gigas</i>)	0	0	0
5	California, USA	pacific oyster (<i>Crassostrea gigas</i>)	2	0	2
6	California, USA	pacific oyster (<i>Crassostrea gigas</i>)	0	0	0
7	California, USA	pacific oyster (<i>Crassostrea gigas</i>)	0	0	0
8	California, USA	pacific oyster (<i>Crassostrea gigas</i>)	0	0	0
9	California, USA	pacific oyster (<i>Crassostrea gigas</i>)	1	0	1
10	California, USA	pacific oyster (<i>Crassostrea gigas</i>)	0	0	0
11	California, USA	pacific oyster (<i>Crassostrea gigas</i>)	0	0	0
12	California, USA	pacific oyster (<i>Crassostrea gigas</i>)	2	0	2
13	California, USA	jacksmelt (<i>Atherinopsis californiensis</i>)	0	0	0
14	California, USA	jacksmelt (<i>Atherinopsis californiensis</i>)	0	0	0
15	California, USA	jacksmelt (<i>Atherinopsis californiensis</i>)	0	0	0
16	California, USA	jacksmelt (<i>Atherinopsis californiensis</i>)	1	1	0
17	California, USA	jacksmelt (<i>Atherinopsis californiensis</i>)	0	0	0
18	California, USA	jacksmelt (<i>Atherinopsis californiensis</i>)	10	0	10
19	California, USA	jacksmelt (<i>Atherinopsis californiensis</i>)	0	0	0
20	California, USA	pacific anchovy (<i>Engraulis mordax</i>)	0	0	0
21	California, USA	pacific anchovy (<i>Engraulis mordax</i>)	0	0	0
22	California, USA	pacific anchovy (<i>Engraulis mordax</i>)	0	0	0
23	California, USA	pacific anchovy (<i>Engraulis mordax</i>)	1	1	0
24	California, USA	pacific anchovy (<i>Engraulis mordax</i>)	0	0	0
25	California, USA	pacific anchovy (<i>Engraulis mordax</i>)	1	0	1
26	California, USA	pacific anchovy (<i>Engraulis mordax</i>)	0	0	0
27	California, USA	pacific anchovy (<i>Engraulis mordax</i>)	0	0	0
28	California, USA	pacific anchovy (<i>Engraulis mordax</i>)	1	1	0
29	California, USA	pacific anchovy (<i>Engraulis mordax</i>)	0	0	0
30	California, USA	pacific mackerel (<i>Scomber japonicus</i>)	0	0	0
31	California, USA	yellowtail rockfish (<i>Sebastes flavidus</i>)	0	0	0
32	California, USA	yellowtail rockfish (<i>Sebastes flavidus</i>)	1	0	1
33	California, USA	yellowtail rockfish (<i>Sebastes flavidus</i>)	0	0	0
34	California, USA	striped bass (<i>Morone saxatilis</i>)	2	1	1
35	California, USA	striped bass (<i>Morone saxatilis</i>)	3	1	2
36	California, USA	striped bass (<i>Morone saxatilis</i>)	1	0	1
37	California, USA	striped bass (<i>Morone saxatilis</i>)	0	0	0
38	California, USA	striped bass (<i>Morone saxatilis</i>)	0	0	0
39	California, USA	striped bass (<i>Morone saxatilis</i>)	0	0	0
40	California, USA	striped bass (<i>Morone saxatilis</i>)	0	0	0
41	California, USA	chinook salmon (<i>Oncorhynchus tshawytscha</i>)	0	0	0
42	California, USA	chinook salmon (<i>Oncorhynchus tshawytscha</i>)	0	0	0
43	California, USA	chinook salmon (<i>Oncorhynchus tshawytscha</i>)	1	0	1
44	California, USA	chinook salmon (<i>Oncorhynchus tshawytscha</i>)	0	0	0
45	California, USA	albacore tuna (<i>Thunnus alalunga</i>)	0	0	0
46	California, USA	albacore tuna (<i>Thunnus alalunga</i>)	0	0	0
47	California, USA	blue rockfish (<i>Sebastes mystinus</i>)	0	0	0
48	California, USA	blue rockfish (<i>Sebastes mystinus</i>)	1	0	1
49	California, USA	blue rockfish (<i>Sebastes mystinus</i>)	0	0	0
50	California, USA	blue rockfish (<i>Sebastes mystinus</i>)	0	0	0
51	California, USA	blue rockfish (<i>Sebastes mystinus</i>)	0	0	0
52	California, USA	blue rockfish (<i>Sebastes mystinus</i>)	0	0	0
53	California, USA	blue rockfish (<i>Sebastes mystinus</i>)	0	0	0
54	California, USA	blue rockfish (<i>Sebastes mystinus</i>)	0	0	0
55	California, USA	blue rockfish (<i>Sebastes mystinus</i>)	0	0	0
56	California, USA	blue rockfish (<i>Sebastes mystinus</i>)	1	1	1
57	California, USA	pacific sanddab (<i>Citharichthys sordidus</i>)	1	0	1
58	California, USA	pacific sanddab (<i>Citharichthys sordidus</i>)	1	0	1
59	California, USA	pacific sanddab (<i>Citharichthys sordidus</i>)	3	1	2
60	California, USA	pacific sanddab (<i>Citharichthys sordidus</i>)	0	0	0
61	California, USA	pacific sanddab (<i>Citharichthys sordidus</i>)	0	0	0
62	California, USA	lingcod (<i>Ophiodon elongatus</i>)	1	0	1
63	California, USA	lingcod (<i>Ophiodon elongatus</i>)	0	0	0
64	California, USA	lingcod (<i>Ophiodon elongatus</i>)	0	0	0
65	California, USA	lingcod (<i>Ophiodon elongatus</i>)	0	0	0
66	California, USA	lingcod (<i>Ophiodon elongatus</i>)	0	0	0
67	California, USA	lingcod (<i>Ophiodon elongatus</i>)	0	0	0
68	California, USA	lingcod (<i>Ophiodon elongatus</i>)	0	0	0
69	California, USA	lingcod (<i>Ophiodon elongatus</i>)	0	0	0
70	California, USA	lingcod (<i>Ophiodon elongatus</i>)	0	0	0
71	California, USA	lingcod (<i>Ophiodon elongatus</i>)	0	0	0
72	California, USA	lingcod (<i>Ophiodon elongatus</i>)	0	0	0
73	California, USA	copper rockfish (<i>Sebastes caurinus</i>)	0	0	0
74	California, USA	vermilion rockfish (<i>Sebastes miniatus</i>)	0	0	0
75	California, USA	vermilion rockfish (<i>Sebastes miniatus</i>)	0	0	0
76	California, USA	vermilion rockfish (<i>Sebastes miniatus</i>)	0	0	0

Sample #	Debris Type	length (mm)	width (mm)
52	plastic fragment	N/A	N/A
52	plastic fragment	N/A	N/A
52	plastic fragment	N/A	N/A
54	plastic fragment	N/A	N/A
54	plastic fragment	N/A	N/A
54	plastic fragment	N/A	N/A
54	plastic fragment	N/A	N/A
54	plastic fragment	N/A	N/A
54	plastic fragment	N/A	N/A
54	plastic fragment	N/A	N/A
54	plastic fragment	N/A	N/A
54	plastic fragment	N/A	N/A
54	plastic fragment	N/A	N/A
54	plastic fragment	N/A	N/A
54	plastic fragment	N/A	N/A
54	plastic fragment	N/A	N/A
54	plastic fragment	N/A	N/A
54	plastic fragment	N/A	N/A
54	plastic fragment	N/A	N/A
55	plastic fragment	N/A	N/A
55	plastic fragment	N/A	N/A
55	plastic fragment	N/A	N/A
55	plastic fragment	N/A	N/A
55	plastic fragment	N/A	N/A
57	plastic fragment	N/A	N/A
57	plastic fragment	N/A	N/A
57	plastic fragment	N/A	N/A
57	plastic fragment	N/A	N/A
57	plastic fragment	N/A	N/A
57	plastic fragment	N/A	N/A
57	plastic fragment	N/A	N/A
57	plastic fragment	N/A	N/A
58	plastic fragment	2	3.1
63	plastic monofilament	36.56	0.198

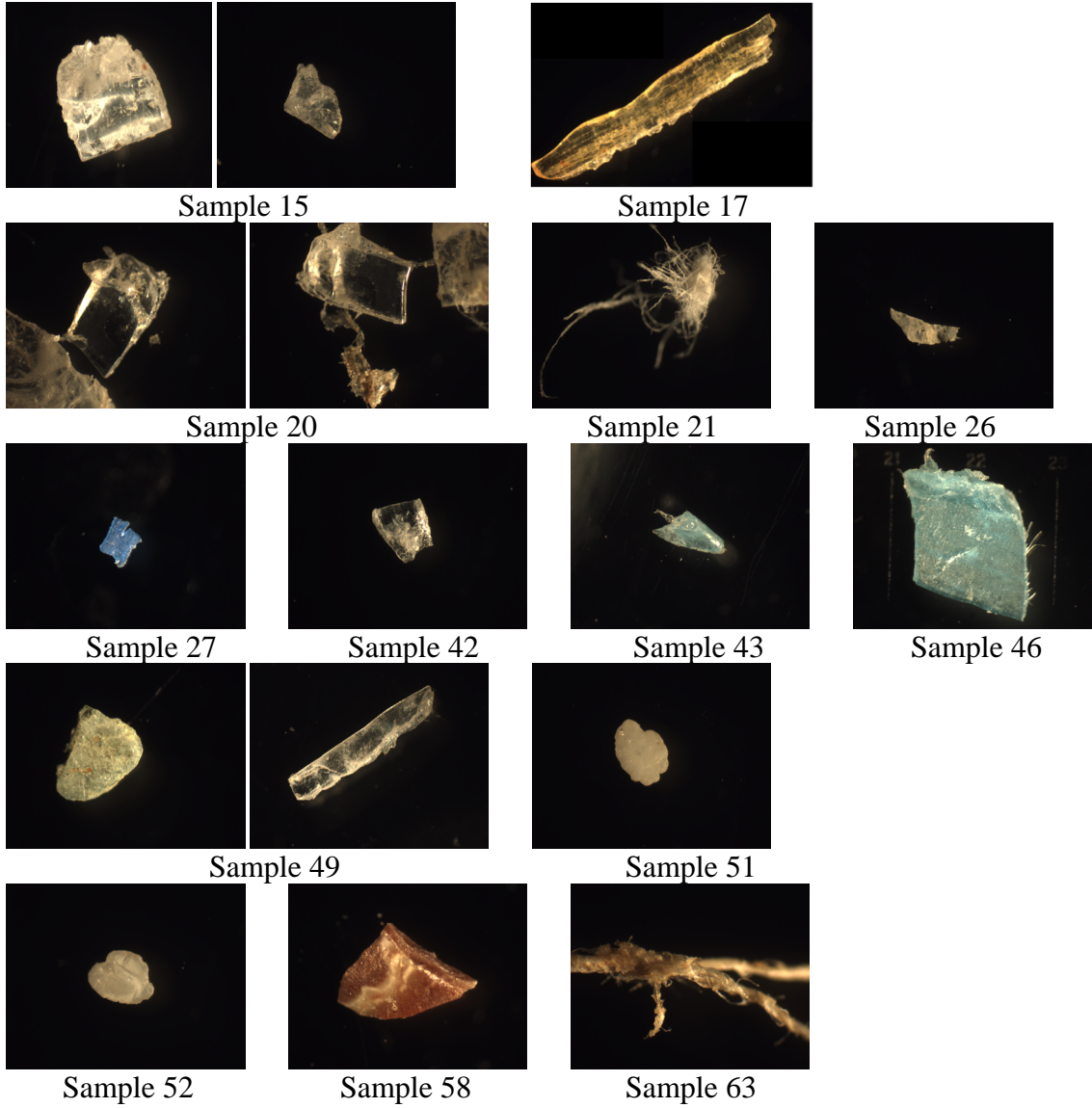
54
55
56
57
58
59
60
61
62
63
64
65
66
67
68
69
70
71
72
73
74
75
76
77
78
79
80

81 **Table S4. Type and size of each piece of anthropogenic debris sampled from the USA. N/A**
 82 **denotes where a picture was not available or acceptable to measure the size of the debris.**

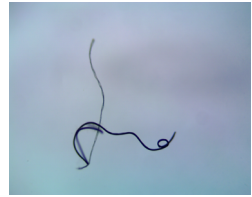
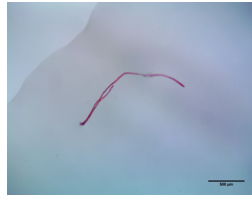
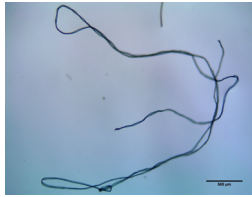
Sample #	Debris Type	length (mm)	width (mm)
2	fiber	N/A	N/A
2	fiber	N/A	N/A
5	fiber	3.281	0.049
5	fiber	15.841	0.02
9	fiber	2.273	0.04
12	fiber	3.521	0.029
12	fiber	2.451	0.036
16	plastic fragment	2.593	0.438
18	fiber	2.68	0.02
18	fiber	4.792	0.024
18	fiber	2.252	0.019
18	fiber	3.322	0.019
18	fiber	N/A	N/A
18	fiber	N/A	N/A
18	fiber	N/A	N/A
18	fiber	N/A	N/A
18	fiber	N/A	N/A
18	fiber	N/A	N/A
23	film	1.115	1.005
25	fiber	6.298	0.029
28	plastic monofilament	16.872	0.022
32	fiber	3.445	0.024
34	fiber	7.424	0.031
34	film	19.985	2.07
35	fiber	6.077	0.021
35	fiber	3.405	0.029
35	foam	0.375	0.563
36	fiber	6.448	0.026
43	fiber	28.8	0.036
48	fiber	2.4	0.016
56	fiber	N/A	N/A
57	fiber	2.688	0.008
58	fiber	4.959	0.021
59	fiber	5.269	0.014
59	fiber	6.155	0.033
59	film	3.312	1.314
62	fiber	3.445	0.024

83
 84
 85
 86
 87
 88
 89
 90
 91
 92
 93
 94
 95
 96
 97
 98
 99
 100
 101
 102
 103
 104

105 **Figure S1. Images of several of the individual pieces of anthropogenic debris found in**
106 **samples from Indonesia.**
107



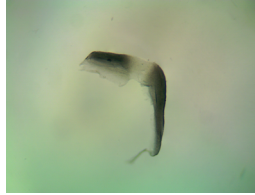
130 **Figure S2. Images of several of the individual pieces of anthropogenic debris found in**
131 **samples from California.**
132



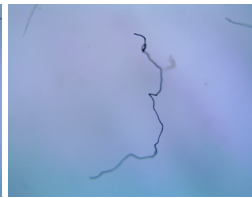
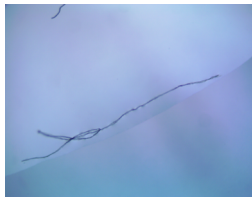
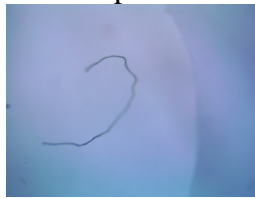
133
134 Sample 5

Sample 9

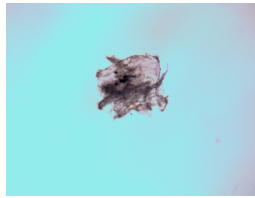
Sample 12 (2 fibers)



135
136 Sample 16



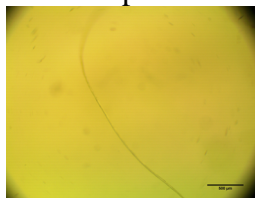
137
138 Sample 18



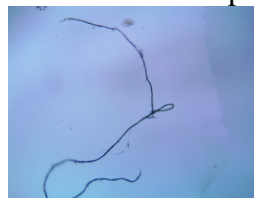
139
140 Sample 23



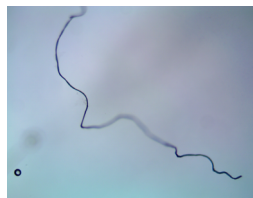
Sample 25



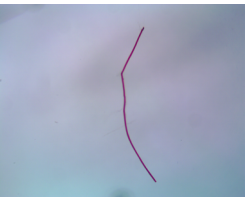
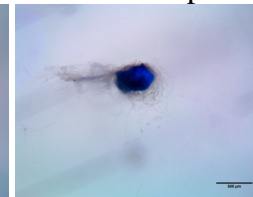
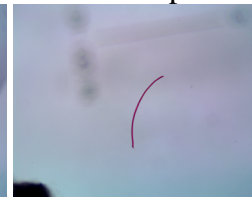
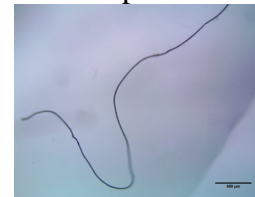
141
142 Sample 28



Sample 32



Sample 34

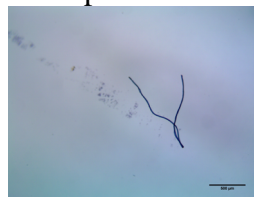


143
144 Sample 35

Sample 36



145
146 Sample 43



Sample 48

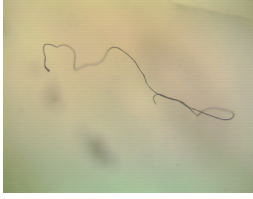
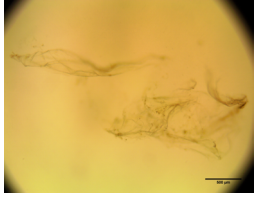


Sample 57



Sample 58

147
148
149



Sample 59



Sample 62