

Supplemental Figure S1

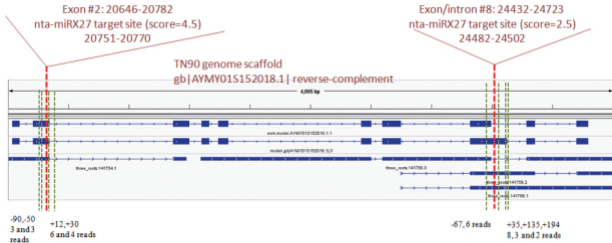


Figure S1. *QPT2* gene annotation and validation of nta-miRX27-mediated cleavage of *QPT2* by RLM-RACE. Gene annotation in NCBI (the first track) and the predicted gene structures of *QPT2* using Fgenesh (the second track), and assembled transcripts based on RNA-seq data from roots (SRX495526-7,9, Siero et al., 2014) were shown. Two nta-miRX27 targeting sites were predicted (indicated by red lines) and the first targeting site located at exon #2 of *QPT2* was confirmed to be cleaved by nta-miRX27 based on our degradome data (Fig. S2) although none of the RLM-RACE products was mapped the expected cleavage position at both predicted targeting sites. The 5' end positions of the RLM-RACE products were indicated by dark yellow lines, their distances relative to the predicted cleavage sites and the corresponding number of clones at each position were shown at the bottom of the graph.