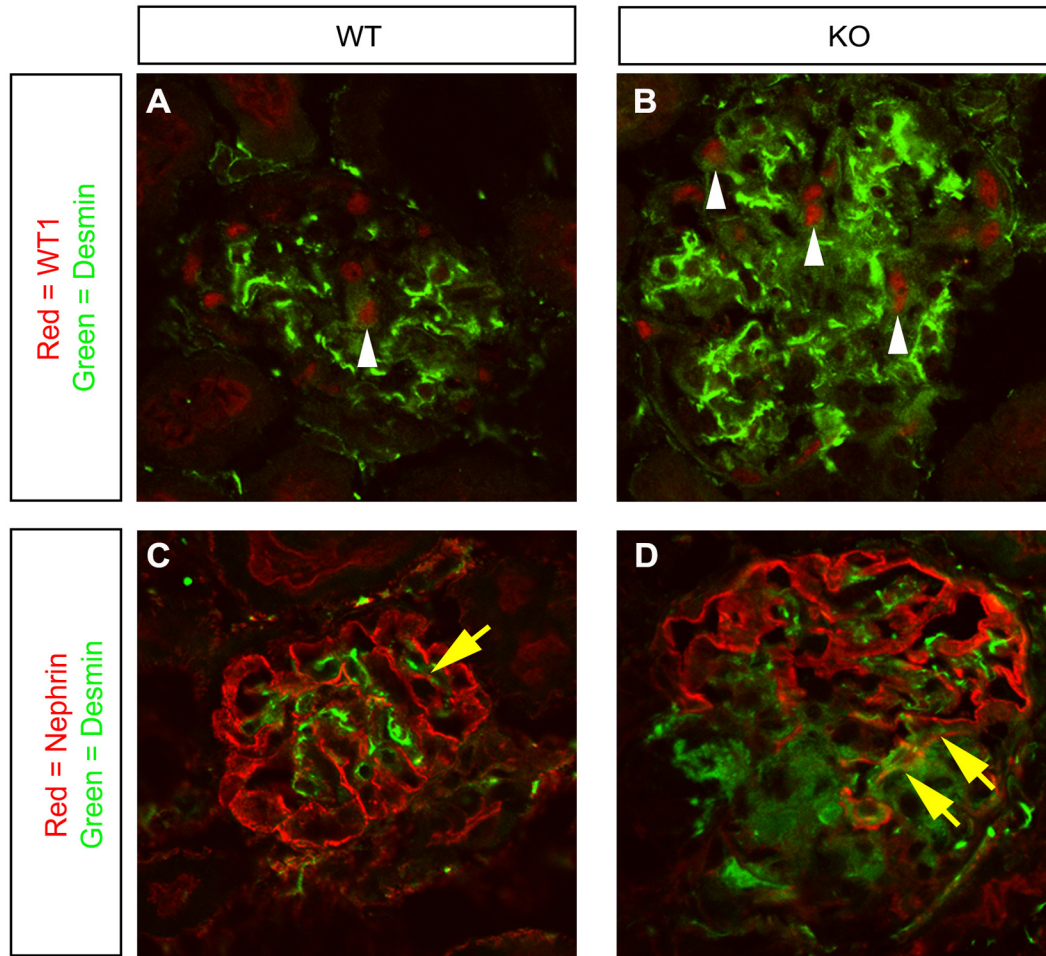


Supplementary Table 1. Individual results for EC-SOD immunohistochemical staining in human kidney biopsies

Percent of total biopsy area positive for EC-SOD. Multiple images were taken to encompass the entire area of each biopsy specimen (except for controls, for which 10 random images were taken). Using Metamorph software analysis, area with positive EC-SOD staining was divided by the total tissue area in each image. These values were then averaged and presented.

Biopsy Sample	Average	SEM
<u>Controls</u>		
Control	17.22	5.44
Control	28.55	9.03
Control	28.40	8.20
<u>Nonproteinuric</u>		
ANCA vasculitis	0.20	0.04
Interstitial nephritis	2.74	0.48
Arteriolar nephrosclerosis	0.13	0.06
Acute interstitial nephritis	8.94	2.26
Acute interstitial nephritis	2.57	0.39
<u>Proteinuric</u>		
Diabetic nephropathy	1.03	0.36
Membranous nephropathy	0.38	0.16
Membranous nephropathy	10.04	3.53
Membranous nephropathy	12.34	7.33
FSGS	25.48	7.36
Amyloidosis	6.96	1.31
Amyloidosis	0.11	0.08
Lupus nephritis	1.37	0.56
Fibrillary glomerulonephritis	0.44	0.35



Supplemental Figure 1. Desmin co-localizes with podocyte markers WT1 and nephrin.

(A-B) Immunofluorescence was performed for the nuclear protein WT1 (red) and the cytoplasmic protein desmin (green). White arrowheads show areas of colocalization of these two proteins in the same cell. (C-D) Immunofluorescence with nephrin (red) and desmin (green) showing areas of colocalization (yellow arrows).