

Additional file 5

Jennifer Shelton¹, Cassondra Coleman², Nic Herndon³, Nanyan Lu⁴, Ernest Lam⁵, Thomas Anantharaman⁶, Palak Sheth⁷, and Sue Brown⁸

¹*Kansas State University*

²*Affiliation not available*

³*Affiliation not available*

⁴*Affiliation not available*

⁵*Affiliation not available*

⁶*Affiliation not available*

⁷*Affiliation not available*

⁸*Affiliation not available*

June 11, 2015

Abstract

Additional file 5 — ChLGs before and after super scaffolding

Alignments of Tcas5.0 and Tcas5.2 *in silico* maps to consensus genome maps for all ChLGs. Consensus genome maps (blue with molecule coverage shown in dark blue) aligned to the *in silico* maps (green with contigs overlaid as translucent colored squares). Alignment to both Tcas5.2 super scaffolds (top alignment) and Tcas5.0 scaffolds (bottom alignment) are shown.

Competing interests

JMS, MCC, NH, NL, and SJB declare that they have no competing interests. ETL, PS and TA are employees at BioNano Genomics and hold stock options.

Figures

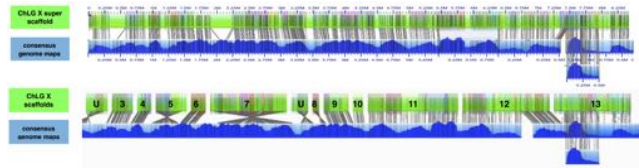


Figure 1: **Chromosome Linkage Group X.** ChLGX before and after super scaffolding viewed in IrysView.

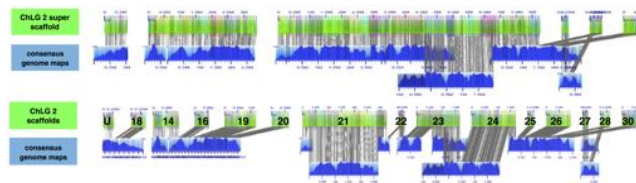


Figure 2: **Chromosome Linkage Group 2.** ChLG2 before and after super scaffolding viewed in IrysView.

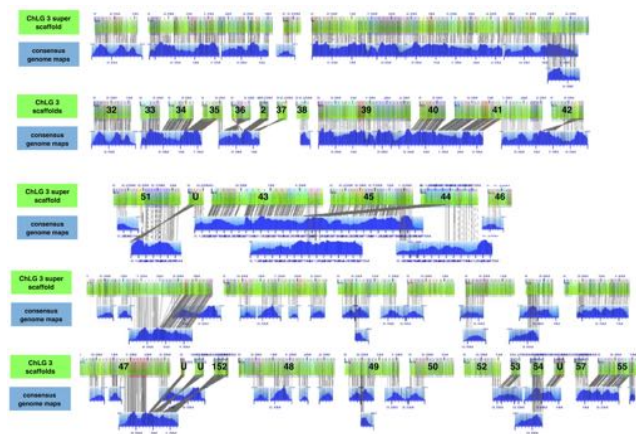


Figure 3: **Chromosome Linkage Group 3.** ChLG3 before and after super scaffolding viewed in IrysView.

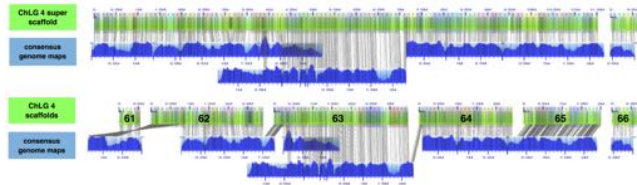


Figure 4: **Chromosome Linkage Group 4.** ChLG4 before and after super scaffolding viewed in IrysView.

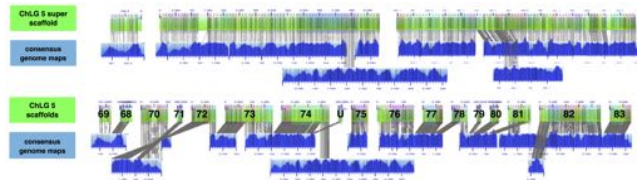


Figure 5: **Chromosome Linkage Group 5.** ChLG5 before and after super scaffolding viewed in IrysView.

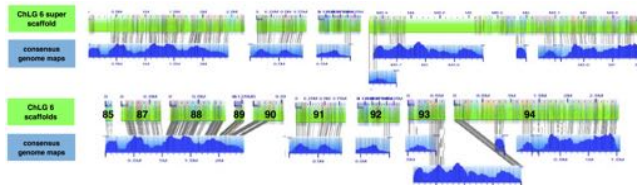


Figure 6: **Chromosome Linkage Group 6.** ChLG6 before and after super scaffolding viewed in IrysView.

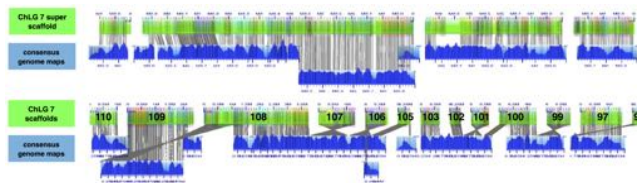


Figure 7: **Chromosome Linkage Group 7.** ChLG7 before and after super scaffolding viewed in IrysView.

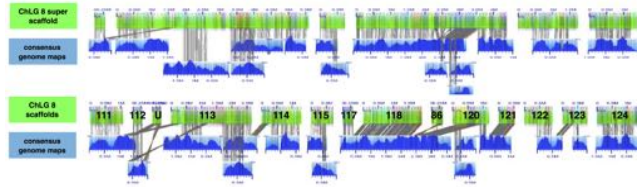


Figure 8: **Chromosome Linkage Group 8**. ChLG8 before and after super scaffolding viewed in IrysView.

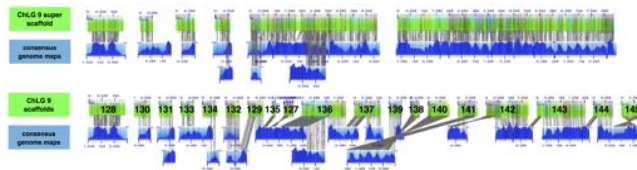


Figure 9: **Chromosome Linkage Group 9**. ChLG9 before and after super scaffolding viewed in IrysView.

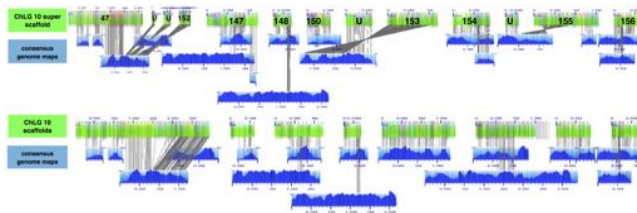


Figure 10: **Chromosome Linkage Group 10**. ChLG10 before and after super scaffolding viewed in IrysView.