

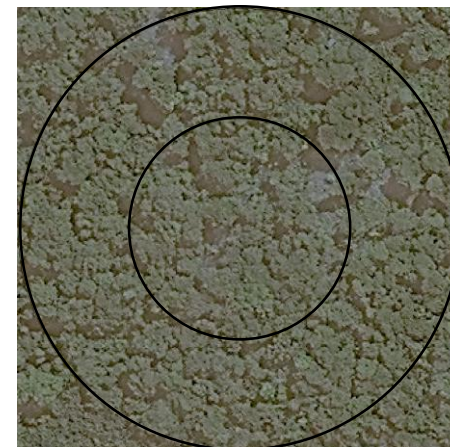
Peridomestic



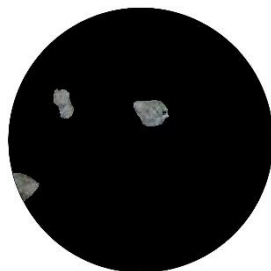
Chacra



Forest



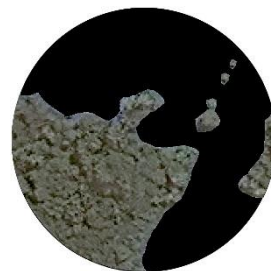
100 m



50 m



100 m



50 m



100 m



50 m

Additional file 2. Exemplar images depicting forest cover determination using satellite imagery. For each of the three forest cover levels, forest cover was calculated at both 50 m (inner circle) and 100 m (outer circle) radii from the collection site. Non-forest areas of the image were selected and colored pure black. The percentage of non-black pixels was determined using GIMP v.2.8.10 image software (www.gimp.org).