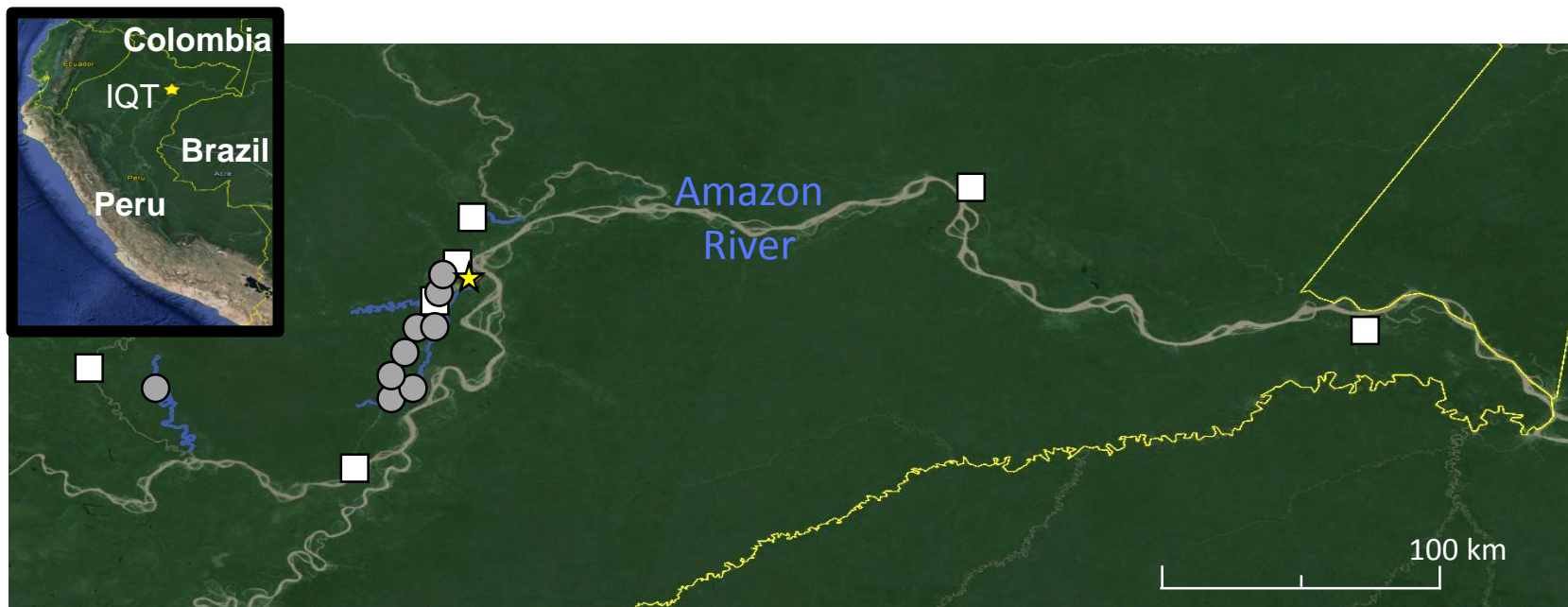
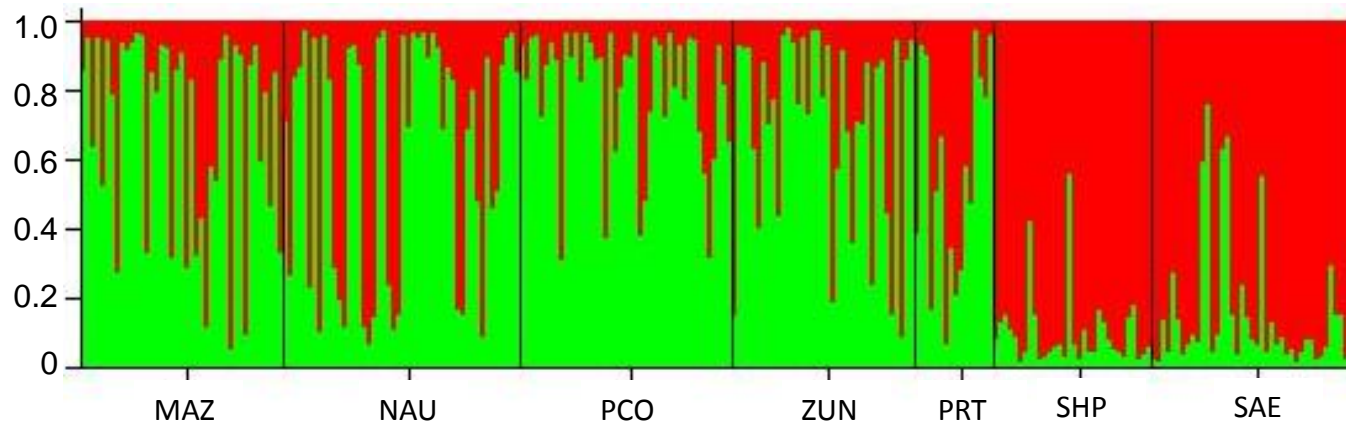


**A****B**

**Additional file 5.** Reanalysis of *Anopheles darlingi* collected in the peri-Iquitos region in 2006, using microsatellites. **(A)** *Anopheles darlingi* collection sites from 2006 (white squares) and 2012-2014 (grey circles) near Iquitos, Loreto, Peru (yellow star). **(B)** Population structure of *Anopheles darlingi* collected in the peri-Iquitos region in 2006, reanalyzed using thirteen microsatellite loci. Collection of these specimens was previously described by Mirabello *et al.* [46]. Optimal  $K = 2$ . MAZ = Mazan; NAU = Nauta; PCO = Padre Cocha; ZUN = Zungarococha; PRT = Piura, Rio Tigre; SHP = Shishita, Pevas; SAE = San Esteban.