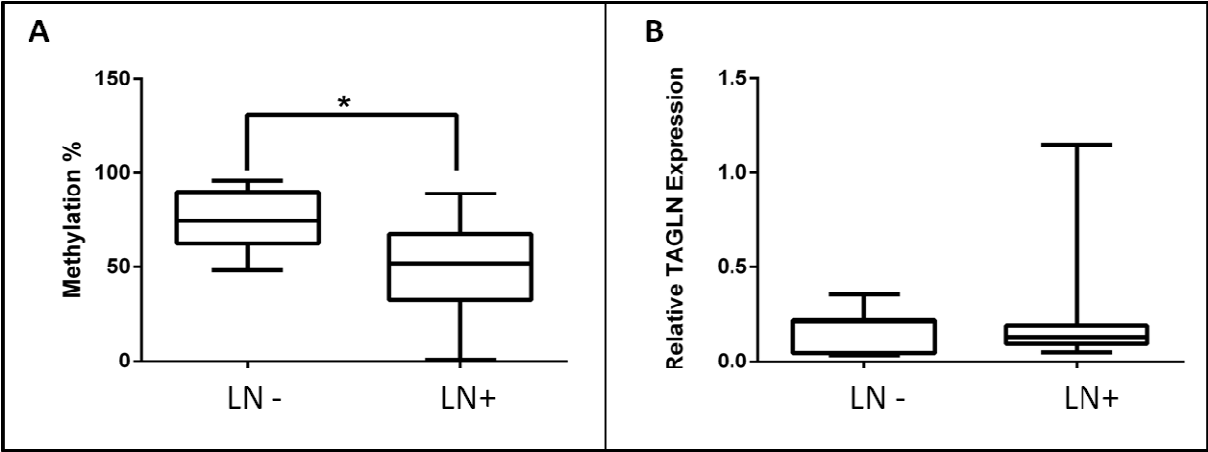
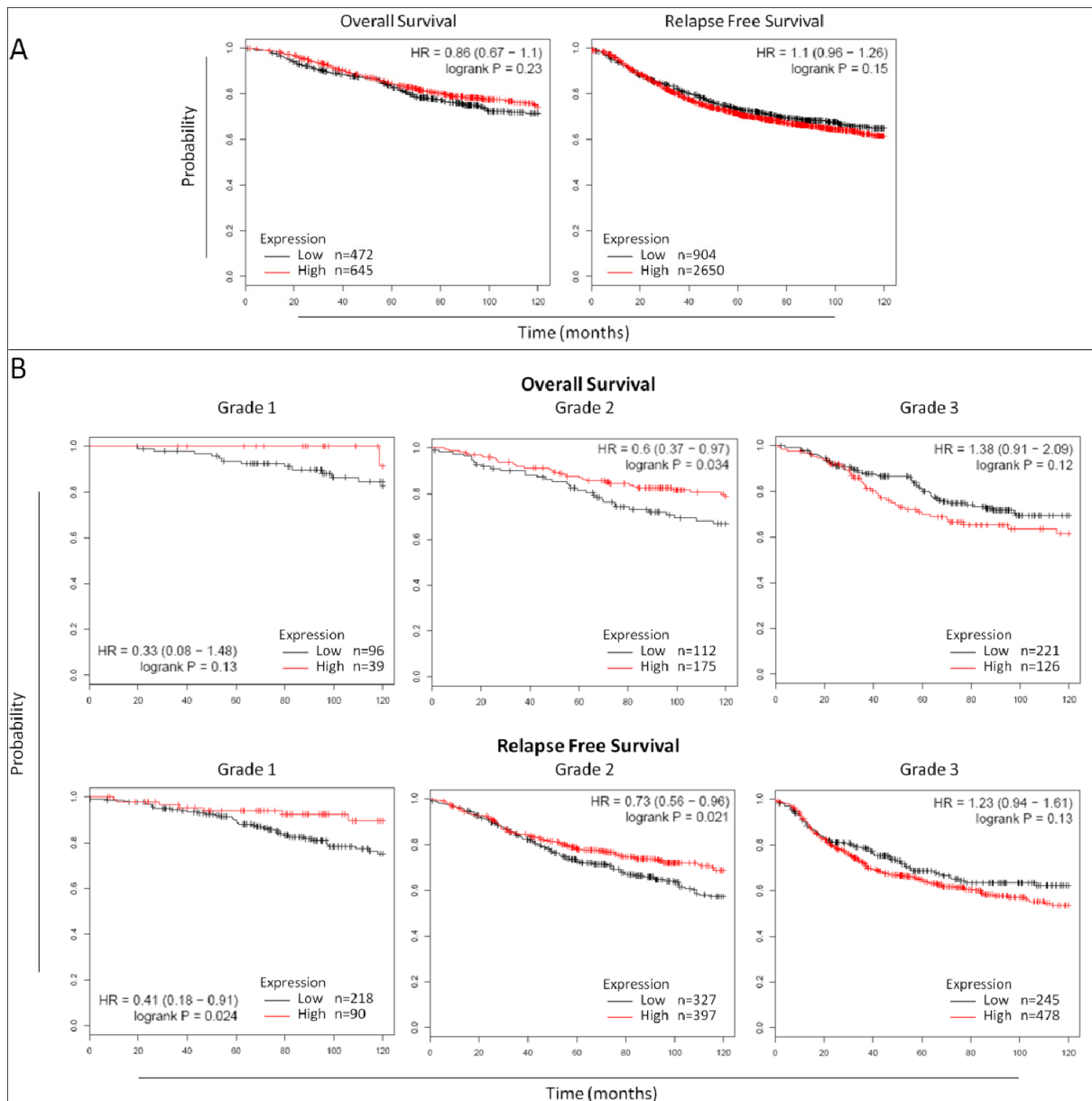


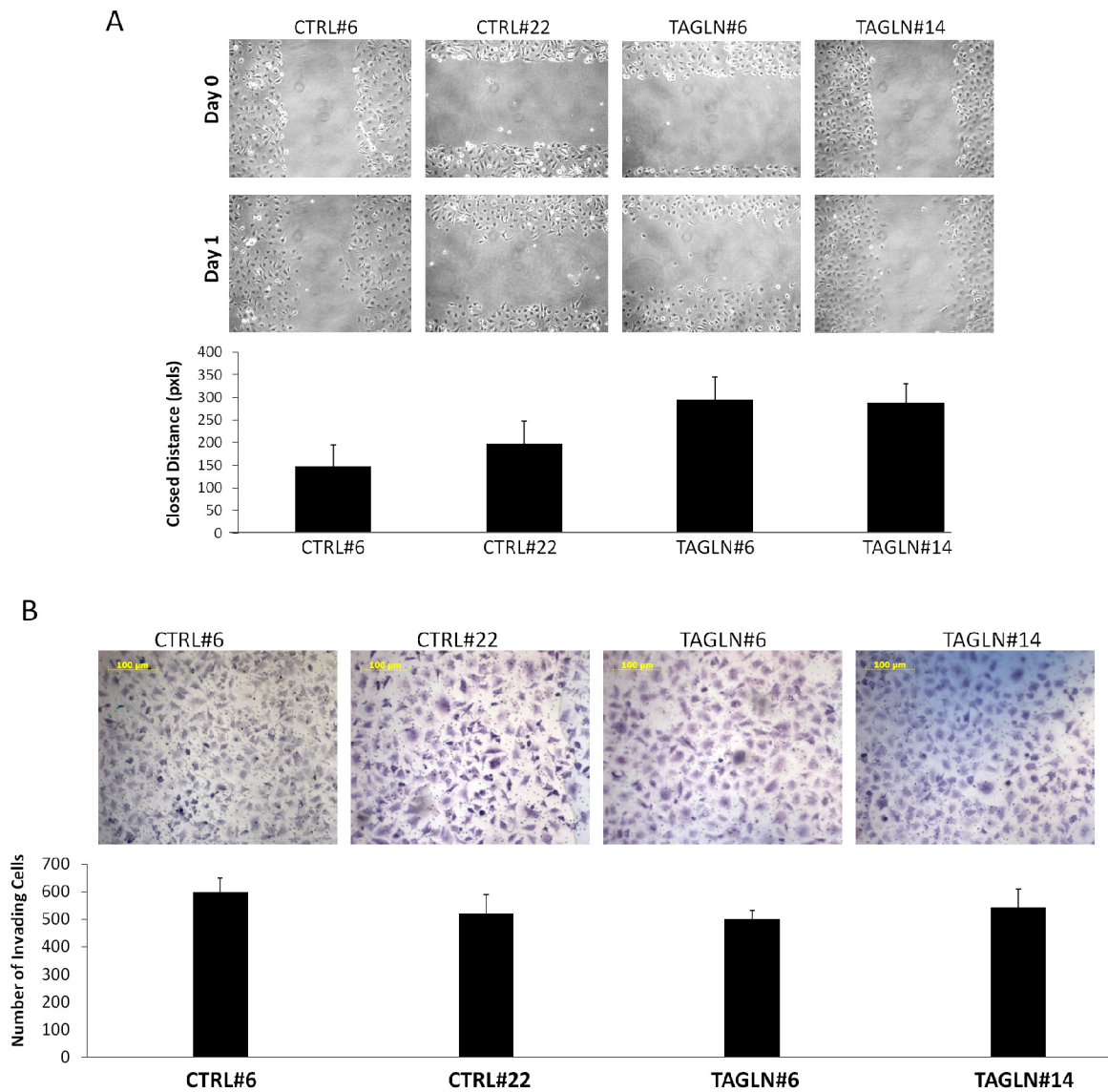
Supplementary Figures



**Figure S1. TAGLN expression and methylation status, and lymph node metastasis of breast cancer (A)** Methylation levels of TAGLN were significantly higher in lymph node negative (LN-) tumors ( $*P < 0.05$ , Mann Whitney Test), **(B)** while mRNA expressions did not differ. The geometric means of ACTB and SDHA expressions were used as reference genes in qRT- PCR analysis. Horizontal lines show maximum, median and minimum values.



**Figure S2: Univariate survival analysis of *TAGLN* microarray expression levels.** KM plots were generated for *TAGLN* (205547\_s\_at) expression using KM plotter breast cancer cohort (<http://www.kmplot.com/>). **(A)** *TAGLN* expression does not affect either OS or RFS when all patients are analyzed together. **(B)** Higher expression of *TAGLN* results in significantly better OS in grade 2 patients, and RFS in grade 1 and grade 2 patients, while there was no significant difference in grade 3 patients.



**Figure S3: Effect of *TAGLN* over-expression on migration and invasion of MDA-MB-157 cells.** *TAGLN* overexpression in MDA-MB-157 cells did not result in a significant difference in either migration (A), or invasion (B) of normally motile MDA-MB-157 cells. CTRL#6 and CTRL#22: MDA-MB-157 cells transfected with control vector. TAGLN#6 and TAGLN#14 : MDA-MB-157 clones transfected with *TAGLN* over-expression vector.