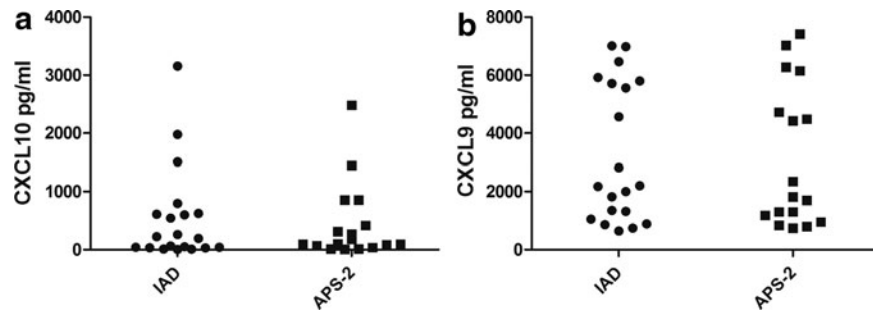


Supplementary Data



SUPPLEMENTARY FIG. S1. Variations in plasma and serum levels of CXCL10 (a) and CXCL9 (b) as seen in Fig. 1, stratified between patients with isolated Addison's disease (IAD) and patients with autoimmune polyendocrine syndrome type 2 (APS-2). Nonparametric Mann–Whitney *U*-test was used to test for statistical differences between the 2 groups, but none were found.