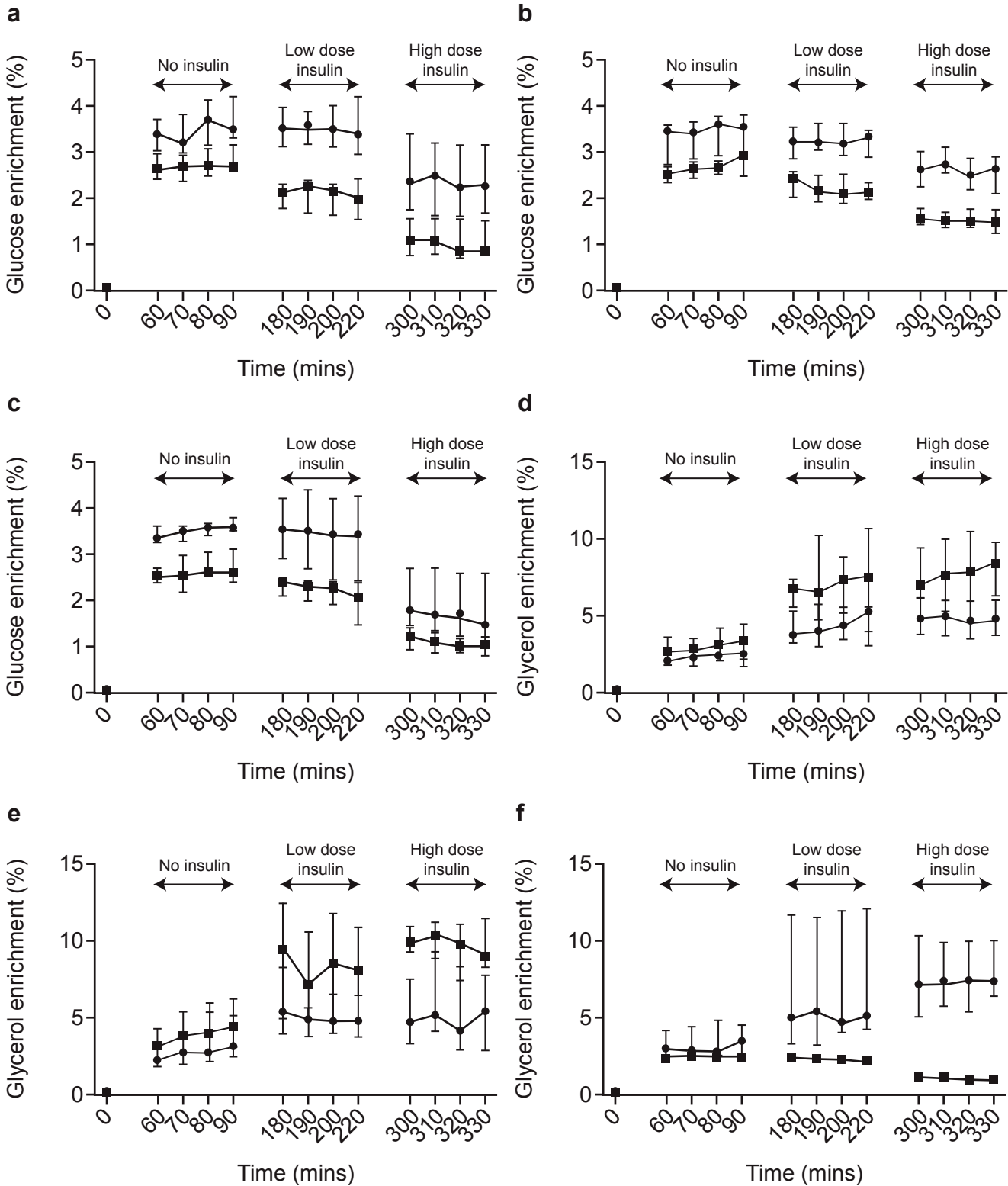


ESM Fig. 3 Glucose and glycerol enrichments during infusion studies



Glucose enrichment at baseline steady state (60-90 minutes), during low-dose insulin infusion (180-210 minutes) and high dose insulin infusion (300-330 minutes) are presented as median (IQR) at 19 weeks gestation (a), 36 weeks gestation (b) and in the non-pregnant state (c) along with the glycerol enrichment at 19 weeks gestation (d), 36 weeks gestation (e) and in the non-pregnant state (f). Obese subjects (black circles), Lean subjects (black squares). See ESM Table 2.