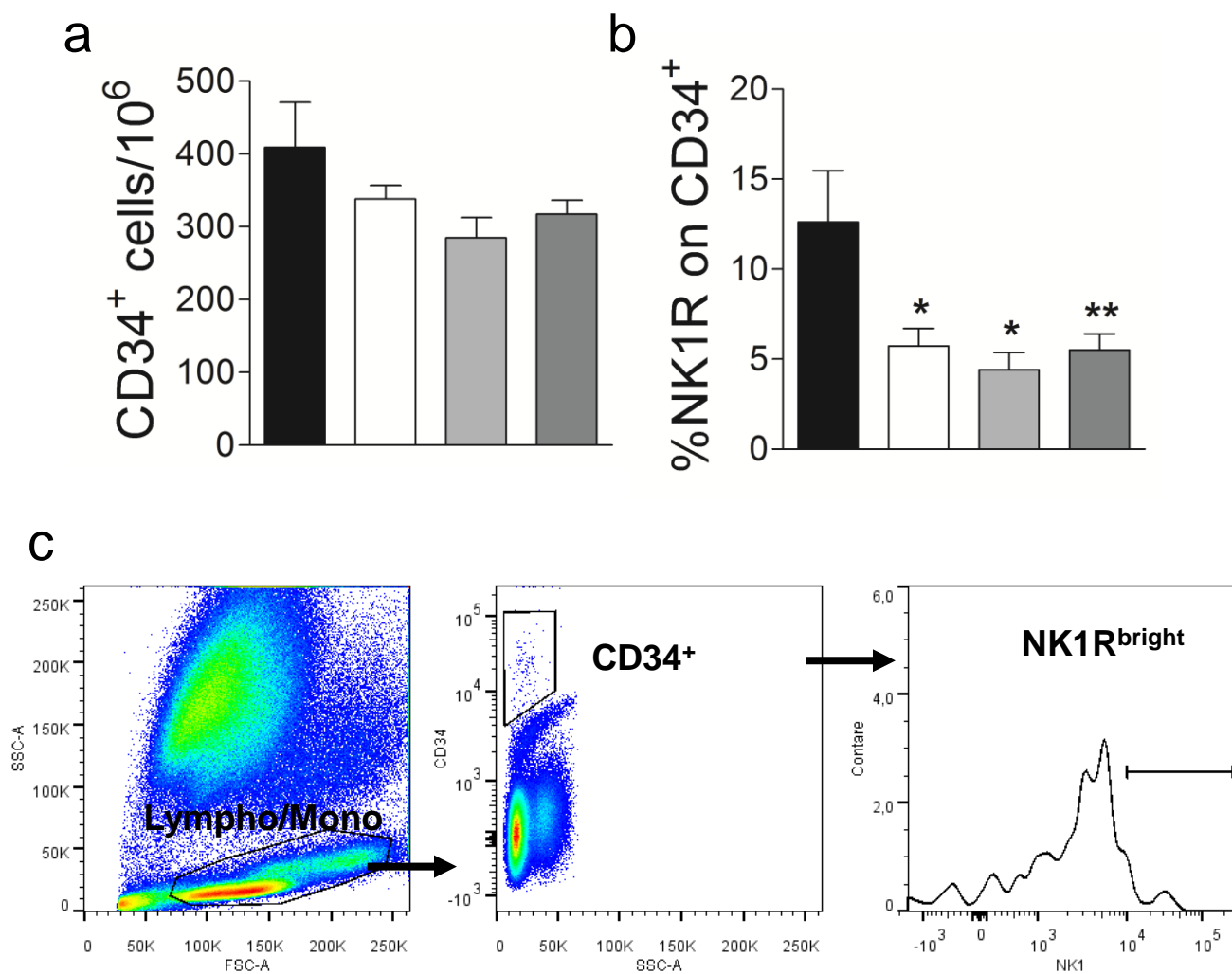


ESM Fig. 2



ESM Figure 2: Reduced NK1R expression in stem cells of diabetic patients. CD34⁺ cell count (a), and the respective expression of the SP receptor NK1R (b) were quantified in non-diabetic (black) and type 2 diabetic patients divided according to complications (none, white; neuropathic, light grey; or neuroischaemic, dark grey, **P*<0.05 vs. ND. Panel c shows a representative FACS plot to illustrate the gating strategy used to assess NK1R expression on CD34⁺ cells.